



Pricing March 1, 2020
Discount 57.7% from List prices



MAS SIN 33721

CALVIN Public Seating

LAYOUTS

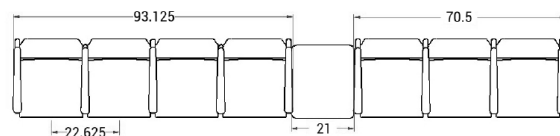
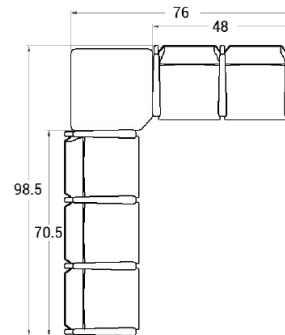
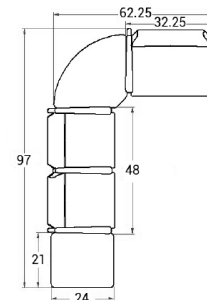


Description

- Spec's Calvin offers an oval steel frame with either wood or aluminum side rails.
- Your layout possibilities are unlimited with spacer, radius and corner tables for both standard and bariatric seating in virtually any combination.
- Bariatric seating is a 30" wide seat and is load tested to 750 lbs. Cannot be connected to other bariatric seats.
- 21" seat width is standard.
- Choice of wood, polyurethane or Corian arms, replaceable in the field.
- Two and three seat models offer a choice of no center arms or half arms between seats.
- Glides and separate seat and back are standard.
- Please send a drawing of the configuration you require with your order.
- Ships assembled as one, two and three seater units.
- For fabrics you wish railroaded or repeats larger than 5" x 5", please contact the factory with repeat information and yardage requirement will be provided.



LAYOUTS AND DIMENSIONS





Pricing March 1, 2020
Discount 57.7% from List prices



MAS SIN 33721

CALVIN Public Seating



PRODUCT CODE

8101M

Series
81 : Calvin

Center Arm
0 : No center arm
1 : Half arms

Seats
1 : Single Seat
2 : Two-Seat
3 : Three-Seat

Chair Type
M : Mid Back
H : Highback
G : Bariatric
L : Loveseat
ME : Hip Chair

OPTIONS

SIDE RAIL



Wood



Aluminium

ARMS



Wood



Polyurethane



Corian

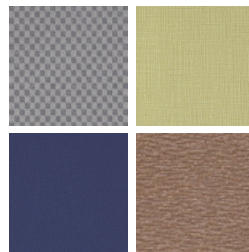
FINISHES

FRAME



Select from one of our 76 standard Spectone colors

FABRIC



Select fabrics from one of our textile partners

ARMS



Black



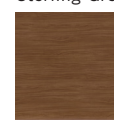
Sterling Grey



Select from one of 5 Corian finishes



Taupe



Select from one of our 9 standard wood stains or stain-to-match at no upcharge

See Spectone Card or specfurniture.com/materials/finishes for a complete list of finish options and colors.



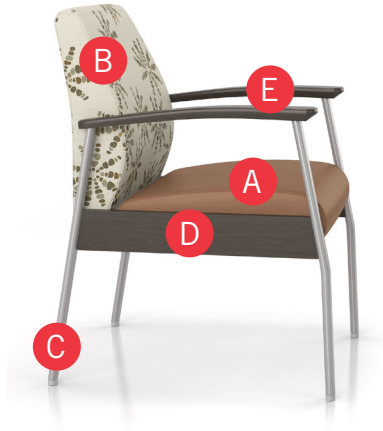
Pricing March 1, 2020
Discount 57.7% from List prices



MAS SIN 33721

CALVIN Public Seating

HOW TO ORDER



Specify Model

- A** Specify Fabric - Seat
Manufacturer, Pattern Name, Color
- B** Specify Fabric - Back
Manufacturer, Pattern Name, Color
- C** Specify Frame Finish
- D** Specify Side Rail Type and Color
- E** Specify Arm Type and Color

Optional: Wood Side Frame, CAL 133, Moisture Barrier, Connecting and Freestanding Tables, Vinyl Headrest Insert, Corian Arms

Model	Fabric - Seat	Fabric - Back	Frame Finish	Side Rail Type and Color	Arm Type and Color
8101M	Momentum, Icon, Lacquer	Momentum, Estrella, Lumen	Silver	Wood, Asian Night Stain	Wood, Asian Night Stain





Pricing March 1, 2020
Discount 57.7% from List prices



MAS SIN 33721

CALVIN Public Seating

Single Seater with arms

Standard Features

- Separate seat and back
- Polyurethane arms or wood arms
- Arms are field replaceable
- Wall-saving, 14 gauge oval tube frame
- Frame in any Spectone color
- Velcro removable back covers, replaceable seat
- Used in connected layouts at no upcharge
- Glides
- Ships assembled
- Ships 1/carton 15 cu ft

Contact Spec Customer Service to railroad fabrics (specify repeat info and yardage requirement will be provided) and for repeats greater than 5" x 5"

Options

- Choose aluminum (A) or wood (W) side frame. Aluminum side frame available in any Spectone color
- For wood (W) side frame, specify and add \$120 list Available in any of 9 standard stains or stain-to-match at no upcharge
- Polyurethane arms available in Black, Sterling Grey or Taupe (RAL 7006)
- Wood arms in Beech are available in any of 9 standard stains or stain-to-match at no upcharge
- Corian arms available in Antarctica, Bisque, Cameo White, Glacier White, or Linen. Custom colors available, contact Spec for pricing
- Connected and freestanding tables
- Antibacterial and antimicrobial fabrics available
- Different fabric on seat and back at no upcharge
- CAL 133



Single Seater with arms

COM 1.75 yds
0.75 yd COM per single seat
1.0 yd COM per single back

MODEL	COM	GR 1	GR 2	GR 3	GR 4	GR 5	GR 6
8101M	985	1091	1122	1197	1298	1380	1488

Dimensions (inches)

seat H	18.0	seat W	21.0	arm H	25.0
total H	33.75	total W	25.0	depth	26.0

Meets BIFMA Seating Durability Test to 500 lbs per chair
CAL 133, add \$120 List per chair
For Corian arms add suffix C and **\$280**



8101M
44 lbs



Pricing March 1, 2020
Discount 57.7% from List prices



MAS SIN 33721

CALVIN Public Seating

Two and Three Seaters with outside arms

Standard Features

- Separate seat and back
- Polyurethane arms or wood arms
- Arms are field replaceable
- Wall-saving, 14 gauge oval tube frame
- Frame in any Spectone color
- Velcro removable back covers, replaceable seat
- Used in connected layouts at no upcharge
- Glides
- Ships assembled as 2 or 3 seaters
- Ships 1/carton 26 cu ft (2 seater),
1/carton 39 cu ft (3 seater)

Contact Spec Customer Service to railroad fabrics (specify repeat info and yardage requirement will be provided) and for repeats greater than 5" x 5"

Options

- Choose aluminum (A) or wood (W) side frame. Aluminum side frame available in any Spectone color
- For wood (W) side frame, specify and add \$120 list Available in any of 9 standard stains or stain-to-match at no upcharge
- Polyurethane arms available in Black, Sterling Grey or Taupe (RAL 7006)
- Wood arms in Beech are available in any of 9 standard stains or stain-to-match at no upcharge
- Corian arms available in Antarctica, Bisque, Cameo White, Glacier White, or Linen. Custom colors available, contact Spec for pricing
- Connected and freestanding tables
- Antibacterial and antimicrobial fabrics available
- Different fabric on seat and back at no upcharge
- CAL 133



Two Seater with outside arms

COM 3.5 yds
0.75 yd COM per single seat
1.0 yd COM per single back

MODEL	COM	GR 1	GR 2	GR 3	GR 4	GR 5	GR 6
8102M	1576	1787	1853	2002	2205	2368	2581

Dimensions (inches)

	seat H	18.0	seat W	21.0	arm H	25.0
total H	33.75	total W	44.75	depth	26.0	

Meets BIFMA Seating Durability Test to 750 lbs per two seater
CAL 133, add \$240 List per two seater
For Corian arms add suffix C and **\$280**



8102M
73 lbs

Three Seater with outside arms

COM 5.25 yds
0.75 yd COM per single seat
1.0 yd COM per single back

MODEL	COM	GR 1	GR 2	GR 3	GR 4	GR 5	GR 6
8103M	2105	2420	2520	2741	3046	3292	3614

Dimensions (inches)

	seat H	18.0	seat W	21.0	arm H	25.0
total H	33.75	total W	67.5	depth	26.0	

Meets BIFMA Seating Durability Test to 1000 lbs per three seater
CAL 133, add \$360 List per three seater
For Corian arms add suffix C and **\$280**



8103M
102 lbs



Pricing March 1, 2020
Discount 57.7% from List prices



MAS SIN 33721

CALVIN Public Seating

Two and Three Seaters with half arms

Standard Features

- Separate seat and back
- Polyurethane arms or wood arms
- Arms are field replaceable
- Wall-saving, 14 gauge oval tube frame
- Frame in any Spectone color
- Velcro removable back covers, replaceable seat
- Used in connected layouts at no upcharge
- Glides
- Ships assembled as 2 or 3 seaters
- Ships 1/carton 26 cu ft (2 seater),
1/carton 39 cu ft (3 seater)

Contact Spec Customer Service to railroad fabrics (specify repeat info and yardage requirement will be provided) and for repeats greater than 5" x 5"

Options

- Choose aluminum (A) or wood (W) side frame. Aluminum side frame available in any Spectone color
- For wood (W) side frame, specify and add \$120 list Available in any of 9 standard stains or stain-to-match at no upcharge
- Polyurethane arms available in Black, Sterling Grey or Taupe (RAL 7006)
- Wood arms in Beech are available in any of 9 standard stains or stain-to-match at no upcharge
- Corian arms available in Antarctica, Bisque, Cameo White, Glacier White, or Linen. Custom colors available, contact Spec for pricing
- Connected and freestanding tables
- Antibacterial and antimicrobial fabrics available
- Different fabric on seat and back at no upcharge
- CAL 133



Two Seater with half arms

COM 3.5 yds
0.75 yd COM per single seat
1.0 yd COM per single back

MODEL	COM	GR 1	GR 2	GR 3	GR 4	GR 5	GR 6
8112M	1768	1978	2045	2192	2396	2560	2775

Dimensions (inches)

	seat H	18.0	seat W	21.0	arm H	25.0
total H	33.75	total W	48.0	depth	26.0	

Meets BIFMA Seating Durability Test to 750 lbs per two seater
CAL 133, add \$240 List per two seater
For Corian arms add suffix C and **\$420**



8112M
74 lbs

Three Seater with half arms

COM 5.25 yds
0.75 yd COM per single seat
1.0 yd COM per single back

MODEL	COM	GR 1	GR 2	GR 3	GR 4	GR 5	GR 6
8113M	2456	2774	2872	3095	3398	3644	3967

Dimensions (inches)

	seat H	18.0	seat W	21.0	arm H	25.0
total H	33.75	total W	70.5	depth	26.0	

Meets BIFMA Seating Durability Test to 1000 lbs per two seater
CAL 133, add \$360 List per three seater
For Corian arms add suffix C and **\$560**



8113M
103 lbs



Pricing March 1, 2020
Discount 57.7% from List prices



MAS SIN 33721

CALVIN Public Seating

Loveseat with arms

Standard Features

- Separate seat and back
- Polyurethane arms or wood arms
- Arms are field replaceable
- Wall-saving, 14 gauge oval tube frame
- Frame in any Spectone color
- Velcro removable back covers, replaceable seat
- Used in connected layouts at no upcharge
- Glides
- Ships assembled
- Ships 1/carton 20 cu ft

Contact Spec Customer Service to railroad fabrics (specify repeat info and yardage requirement will be provided) and for repeats greater than 5" x 5"

Options

- Choose aluminum (A) or wood (W) side frame. Aluminum side frame available in any Spectone color
- For wood (W) side frame, specify and add \$120 list. Available in any of 9 standard stains or stain-to-match at no upcharge
- Polyurethane arms available in Black, Sterling Grey or Taupe (RAL 7006)
- Wood arms in Beech are available in any of 9 standard stains or stain-to-match at no upcharge
- Corian arms available in Antarctica, Bisque, Cameo White, Glacier White, or Linen. Custom colors available, contact Spec for pricing
- Connected and freestanding tables
- Antibacterial and antimicrobial fabrics available
- Different fabric on seat and back at no upcharge
- CAL 133



Loveseat with arms

COM 3.5 yds
1.75 yd COM per single seat
1.75 yd COM per single back

MODEL	COM	GR 1	GR 2	GR 3	GR 4	GR 5	GR 6
8101L	1486	1695	1763	1912	2114	2279	2493

Dimensions (inches)

seat H	18.0	seat W	42.0	arm H	25.0
total H	33.75	total W	46.0	depth	26.0

Meets BIFMA Seating Durability Test to 750 lbs per chair
CAL 133, add \$184 List per chair
For Corian arms add suffix C and **\$280**



8101L
73 lbs



Pricing March 1, 2020
Discount 57.7% from List prices



MAS SIN 33721

CALVIN Public Seating

Bariatric Single Seater with arms

Standard Features

- Separate seat and back
- Polyurethane arms or wood arms
- Arms are field replaceable
- Wall-saving, 14 gauge oval tube frame
- Frame in any Spectone color
- Velcro removable back covers, replaceable seat
- Used in connected layouts at no upcharge
- Glides
- Ships assembled
- Ships 1/carton 20 cu ft

Contact Spec Customer Service to railroad fabrics (specify repeat info and yardage requirement will be provided) and for repeats greater than 5" x 5"

Options

- Choose aluminum (A) or wood (W) side frame. Aluminum side frame available in any Spectone color
- For wood (W) side frame, specify and add \$120 list Available in any of 9 standard stains or stain-to-match at no upcharge
- Polyurethane arms available in Black, Sterling Grey or Taupe (RAL 7006)
- Wood arms in Beech are available in any of 9 standard stains or stain-to-match at no upcharge
- Corian arms available in Antarctica, Bisque, Cameo White, Glacier White, or Linen. Custom colors available, contact Spec for pricing
- Connected and freestanding tables
- Antibacterial and antimicrobial fabrics available
- Different fabric on seat and back at no upcharge
- CAL 133



Bariatric Single Seater with arms

COM 3.0 yds

1.5 yd COM per single seat

1.5 yd COM per single back

MODEL	COM	GR 1	GR 2	GR 3	GR 4	GR 5	GR 6
8101G	1197	1378	1434	1562	1736	1876	2060

Dimensions (inches)

seat H	18.0	seat W	30.0	arm H	25.0
total H	33.75	total W	34.0	depth	26.0

Meets BIFMA Seating Durability Test to 750 lbs per chair

CAL 133, add \$150 List per chair

For Corian arms add suffix C and **\$280**



8101G
53 lbs



Pricing March 1, 2020
Discount 57.7% from List prices



MAS SIN 33721

CALVIN Public Seating

Highback Single Seater with arms

Standard Features

- Separate seat and back
- Polyurethane arms or wood arms
- Arms are field replaceable
- 14 gauge oval tube frame
- Frame in any Spectone color
- Velcro removable back covers, replaceable seat
- Used in connected layouts at no upcharge
- Glides
- Ships assembled
- Ships 1/carton 20 cu ft

Contact Spec Customer Service to railroad fabrics (specify repeat info and yardage requirement will be provided) and for repeats greater than 5" x 5"

Options

- Choose aluminum (A) or wood (W) side frame. Aluminum side frame available in any Spectone color
- For wood (W) side frame, specify and add \$120 list Available in any of 9 standard stains or stain-to-match at no upcharge
- Polyurethane arms available in Black, Sterling Grey or Taupe (RAL 7006)
- Wood arms in Beech are available in any of 9 standard stains or stain-to-match at no upcharge
- Corian arms available in Antarctica, Bisque, Cameo White, Glacier White, or Linen. Custom colors available, contact Spec for pricing
- Vinyl insert on top of the back, add \$44 List/seat back
- Connected and freestanding tables
- Antibacterial and antimicrobial fabrics available
- Different fabric on seat and back at no upcharge
- CAL 133



Highback Single Seater with arms

COM 2.5 yds
0.75 yd COM per single seat
1.75 yd COM per single back

MODEL	COM	GR 1	GR 2	GR 3	GR 4	GR 5	GR 6
8101H	1062	1213	1260	1367	1511	1629	1782

Dimensions (inches)
seat H 18.0 seat W 21.0 arm H 25.0
total H 47.50 total W 25.0 depth 26.0

Meets BIFMA Seating Durability Test to 500 lbs per chair
CAL 133, add \$134 List per chair
For Corian arms add suffix C and **\$280**



8101H
50 lbs



Pricing March 1, 2020
Discount 57.7% from List prices



MAS SIN 33721

CALVIN Public Seating

Easy Access Hip Single Seater with arms

Standard Features

- Separate seat and back
- Polyurethane arms or wood arms
- Arms are field replaceable
- Wall-saving, 14 gauge oval tube frame
- Frame in any Spectone color
- Velcro removable back covers, replaceable seat
- Used in connected layouts at no upcharge
- Glides
- Ships assembled
- Ships 1/carton 20 cu ft

Contact Spec Customer Service to railroad fabrics (specify repeat info and yardage requirement will be provided) and for repeats greater than 5" x 5"

Options

- Choose aluminum (A) or wood (W) side frame. Aluminum side frame available in any Spectone color
- For wood (W) side frame, specify and add \$120 list Available in any of 9 standard stains or stain-to-match at no upcharge
- Polyurethane arms available in Black, Sterling Grey or Taupe (RAL 7006)
- Wood arms in Beech are available in any of 9 standard stains or stain-to-match at no upcharge
- Corian arms available in Antarctica, Bisque, Cameo White, Glacier White, or Linen. Custom colors available, contact Spec for pricing
- Connected and freestanding tables
- Antibacterial and antimicrobial fabrics available
- Different fabric on seat and back at no upcharge
- CAL 133



Easy Access Hip Single Seater with arms

COM 1.75 yds
0.75 yd COM per single seat
1.0 yd COM per single back

MODEL	COM	GR 1	GR 2	GR 3	GR 4	GR 5	GR 6
8101ME	1091	1195	1227	1302	1404	1486	1594

Dimensions (inches)

seat H	24.0	seat W	21.0	arm H	31.5
total H	46.0	total W	25.0	depth	26.0

Meets BIFMA Seating Durability Test to 500 lbs per chair
CAL 133, add \$120 List per chair
For Corian arms add suffix C and **\$280**



8101ME
47 lbs



CALVIN Public Seating

Freestanding Lounge Tables – Corner and Spacer Connecting Tables

Standard Features

- Tops in laminate or veneer
- Select laminate tops from 15 standard laminates or choose any standard Wilsonart, Nevamar, Formica, Arborite and Pionite matte finish laminates at no upcharge.
- Freestanding lounge tables available with PVC Flat (PVF), 2mm (2MM), exposed Baltic Birch plywood (PF, PKNR) or hardwood (HB) edge
- Connecting table tops available with PVC Flat (PVF) edge, Self edge (SE) or hardwood (HB) edge
- 9 standard veneer and hardwood edge stains. Stain-to-match available at no upcharge.
- Oval steel table legs available in any Spectone color
- Tops utilize NU Green earth friendly core
- Threaded replaceable glides
- 18" height

Options

- Non-standard laminates, contact Spec for pricing
- Custom size spacer tables for restricted spaces
- Other sizes may be available

Radius Corner Tables are recommended for open areas



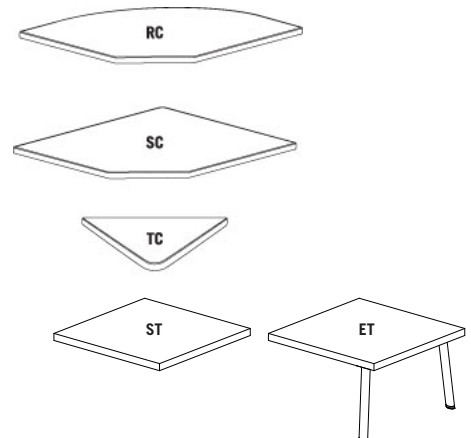
Freestanding Lounge Tables

Model	Laminate PVF/SE/2MM	Laminate PF/PKNR/HB	Veneer HB	Weight	Cu.Ft.
81 - 24 x 24 SQ	639	833	988	47	7.2
81 - 24 x 48 RE	800	1014	1232	64	18
81 - 30 x 30 SQ	746	887	1052	57	13.5
81 - 22 DIA	799	1159	1363	47	7.2



Corner and Spacer Connecting Tables

Model	Laminate PVF/SE	Laminate HB Edge	Veneer HB Edge	Weight	Cu.Ft.
81RC - 28 x 28 <i>Radius Corner Table</i>	832	1116	1308	26	2
81SC - 28 x 28 <i>Square Corner Table</i>	909	1104	1218	26	2
81TC - 45 degree <i>Corner Table</i>	832	1116	1308	19	2
81ST - 21 x 21 <i>Spacer Table</i>	565	797	913	19	2
81ET - 21 x 21 <i>End Table</i>	754	986	1103	19	2



SOLID EDGE HOME USE