



# COMPANION Lounge Seating

## LAYOUTS

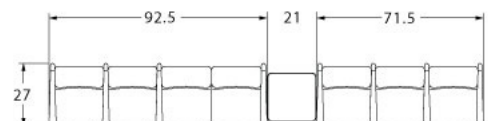
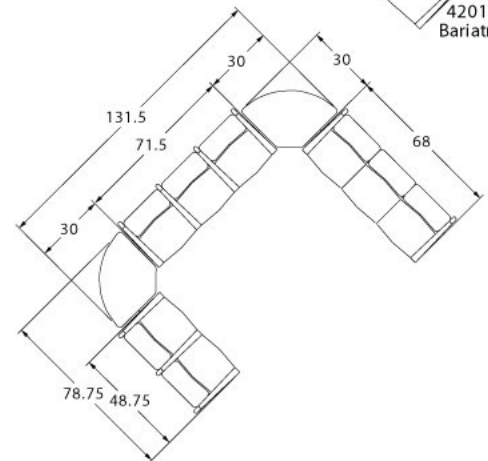
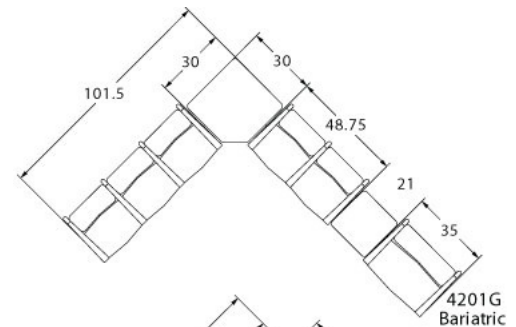


### Description

- Spec™ presents the high performance Companion Series, offering warmth, durability, value and an unbeatable array of options and features.
- Your layout possibilities are unlimited with spacer, radius and corner tables – for both standard and bariatric seating in virtually any combination.
- Bariatric seating is a 30" wide seat and is load tested to 750 lbs. Cannot be connected to other bariatric seats.
- Velcro removable seats and backs are standard.
- 21" seat width is standard.
- Choice of wood or polyurethane arms which are replaceable in the field.
- High and medium back contours fit perfectly and provide exceptional comfort.
- All models offer a choice of no center arms, half arms or full arms to the floor.
- A 5° seat pitch is standard. An optional 7° pitch can be specified at no upcharge. A 3° pitch may be specified at an upcharge of \$22 List per seat.
- 1.75" diameter wall-saving frame is standard to protect both wall and fabric.
- Rear glides and separate seat and back are standard.
- Foam formulated to meet California Bulletin 133 standards is available.
- Please send a drawing of the configuration you require with your order.
- Optional floor mounting glides available.
- For fabrics you wish railroaded or repeats larger than 5" x 5", please contact the factory with repeat information and yardage requirement will be provided.



### LAYOUTS AND DIMENSIONS





Pricing August 2017  
Discount 57.7% from List prices



## COMPANION Lounge Seating



PLACING AN ORDER IS EASY

### PRODUCT CODE

4201M

#### Series

42 : Companion

#### Arm/Other

0 : Outside Arms  
1 : Half Arms  
2 : Full Arms  
3 : Easy Access Hip Chair

#### Number of Seats

1 : Single Seater  
2 : Two Seater  
3 : Three Seater

#### Chair Type

M : Mid Back  
H : Highback  
G : Bariatric  
ME : Hip Chair



### OPTIONS

#### SEAT PITCH



3°, 5° or 7° Seat Pitch

#### ARM TYPE



Polyurethane



Wood

#### HALF ARM PANEL



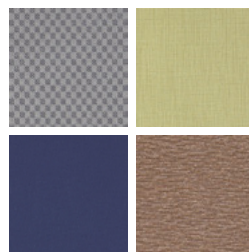
### FINISHES

#### FRAME



Select from one of our 76 standard Spectone colors

#### FABRIC



Select fabrics from one of our textile partners

#### ARMS



Black

Sterling Grey

Taupe

Wood\*

\*Wood arms are available in 9 standard stains or stain-to-match at no upcharge.



Pricing August 2017  
Discount 57.7% from List prices



SIN 711-16

# COMPANION Lounge Seating

Medium Back Single Seater with arms

## Standard Features

- Separate seat and back
- Polyurethane arms or wood arms
- Fully welded 1.75" frame
- Frame in any Spectone color
- Velcro removable seat and back covers
- 5° seat pitch
- Use in connected layouts at no upcharge
- Glides
- Arms replaceable in the field
- Ships assembled as 1, 2 or 3 seaters
- Ships 1/carton 15 cu ft

## Options

- Polyurethane arms are available in Black, Sterling Grey and Taupe (RAL 7006)
- Wood arms are available in 9 standard stains and stain-to-match at no upcharge
- 7° seat pitch at no upcharge; 3° seat pitch, add \$22 List/seat
- Connected and freestanding tables
- Antibacterial and antimicrobial fabrics available
- Different fabric on seat and back at no upcharge
- CAL 133

Contact Spec Customer Service to railroad fabrics (specify repeat info and yardage requirement will be provided) and for repeats greater than 5" x 5"



## Medium Back Single Seater with arms

COM 2.0 yds  
1.0 yd COM per single seat  
1.0 yd COM per single back

MODEL	COM	GR 1	GR 2	GR 3	GR 4	GR 5	GR 6
<b>4201M</b>	<b>1093</b>	<b>1201</b>	<b>1235</b>	<b>1309</b>	<b>1413</b>	<b>1495</b>	<b>1603</b>

Dimensions (inches)

seat H	18.0	seat W	21.0	arm H	27.0
total H	32.5	total W	26.0	depth	27.0

Exceeds BIFMA Seating Durability Test to 500 lbs per chair  
CAL 133, add \$101 List per chair



**4201M**  
44 lbs



# COMPANION Lounge Seating

Medium Back Two and Three Seaters with outside arms

## Standard Features

- Separate seat and back
- Polyurethane arms or wood arms
- Fully welded 1.75" frame
- Frame in any Spectone color
- Velcro removable seat and back covers
- 5° seat pitch
- Use in connected layouts at no upcharge
- Glides
- Arms replaceable in the field
- Ships assembled as 1, 2 or 3 seaters
- Ships 1/carton 26 cu ft (2 seater),  
1/carton 39 cu ft (3 seater)

## Options

- Polyurethane arms are available in Black, Sterling Grey and Taupe (RAL 7006)
- Wood arms are available in 9 standard stains and stain-to-match at no upcharge
- 7° seat pitch at no upcharge; 3° seat pitch, add \$22 List/seat
- Connected and freestanding tables
- Antibacterial and antimicrobial fabrics available
- Different fabric on seat and back at no upcharge
- CAL 133

Contact Spec Customer Service to railroad fabrics (specify repeat info and yardage requirement will be provided) and for repeats greater than 5" x 5"



## Medium Back Two Seater with outside arms

COM 4.0 yds  
1.0 yd COM per single seat  
1.0 yd COM per single back

MODEL	COM	GR 1	GR 2	GR 3	GR 4	GR 5	GR 6
<b>4202M</b>	<b>1673</b>	<b>1888</b>	<b>1960</b>	<b>2101</b>	<b>2317</b>	<b>2479</b>	<b>2692</b>

Dimensions (inches)

	seat H	18.0	seat W	21.0	arm H	27.0
total H	32.5	total W	47.0	depth	27.0	

Exceeds BIFMA Seating Durability Test to 500 lbs per two seater  
CAL 133, add \$202 List per two seater



**4202M**  
74 lbs

## Medium Back Three Seater with outside arms

COM 6.0 yds  
1.0 yd COM per single seat  
1.0 yd COM per single back

MODEL	COM	GR 1	GR 2	GR 3	GR 4	GR 5	GR 6
<b>4203M</b>	<b>2270</b>	<b>2590</b>	<b>2698</b>	<b>2912</b>	<b>3231</b>	<b>3477</b>	<b>3797</b>

Dimensions (inches)

	seat H	18.0	seat W	21.0	arm H	27.0
total H	32.5	total W	68.0	depth	27.0	

Exceeds BIFMA Seating Durability Test to 500 lbs per three seater  
CAL 133, add \$303 List per three seater



**4203M**  
104 lbs



# COMPANION Lounge Seating

Medium Back Two and Three Seaters with half arms

## Standard Features

- Separate seat and back
- Polyurethane arms or wood arms
- Fully welded 1.75" frame
- Frame in any Spectone color
- Velcro removable seat and back covers
- 5° seat pitch
- Use in connected layouts at no upcharge
- Glides
- Arms replaceable in the field
- Ships assembled as 1, 2 or 3 seaters
- Ships 1/carton 26 cu ft (2 seater),  
1/carton 39 cu ft (3 seater)

## Options

- Polyurethane arms are available in Black, Sterling Grey and Taupe (RAL 7006)
- Wood arms are available in 9 standard stains and stain-to-match at no upcharge
- 7° seat pitch at no upcharge; 3° seat pitch, add \$22 List/seat
- Connected and freestanding tables
- Antibacterial and antimicrobial fabrics available
- Different fabric on seat and back at no upcharge
- CAL 133

Contact Spec Customer Service to railroad fabrics (specify repeat info and yardage requirement will be provided) and for repeats greater than 5" x 5"



## Medium Back Two Seater with half arms

COM 4.0 yds

1.0 yd COM per single seat

1.0 yd COM per single back

MODEL	COM	GR 1	GR 2	GR 3	GR 4	GR 5	GR 6
<b>4212M</b>	<b>1873</b>	<b>2087</b>	<b>2159</b>	<b>2300</b>	<b>2514</b>	<b>2676</b>	<b>2893</b>

Dimensions (inches)

seat H	18.0	seat W	21.0	arm H	27.0
total H	32.5	total W	48.75	depth	27.0

Exceeds BIFMA Seating Durability Test to 500 lbs per two seater  
CAL 133, add \$202 List per two seater



**4212M**  
79 lbs

## Medium Back Three Seater with half arms

COM 6.0 yds

1.0 yd COM per single seat

1.0 yd COM per single back

MODEL	COM	GR 1	GR 2	GR 3	GR 4	GR 5	GR 6
<b>4213M</b>	<b>2590</b>	<b>2909</b>	<b>3017</b>	<b>3231</b>	<b>3552</b>	<b>3797</b>	<b>4118</b>

Dimensions (inches)

seat H	18.0	seat W	21.0	arm H	27.0
total H	32.5	total W	71.5	depth	27.0

Exceeds BIFMA Seating Durability Test to 500 lbs per three seater  
CAL 133, add \$303 List per three seater



**4213M**  
114 lbs



# COMPANION Lounge Seating

Medium Back Two and Three Seaters with full arms

## Standard Features

- Separate seat and back
- Polyurethane arms or wood arms
- Fully welded 1.75" frame
- Frame in any Spectone color
- Velcro removable seat and back covers
- 5° seat pitch
- Use in connected layouts at no upcharge
- Glides
- Arms replaceable in the field
- Ships assembled as 1, 2 or 3 seaters
- Ships 1/carton 26 cu ft (2 seater),  
1/carton 39 cu ft (3 seater)

## Options

- Polyurethane arms are available in Black, Sterling Grey and Taupe (RAL 7006)
- Wood arms are available in 9 standard stains and stain-to-match at no upcharge
- 7° seat pitch at no upcharge; 3° seat pitch, add \$22 List/seat
- Connected and freestanding tables
- Antibacterial and antimicrobial fabrics available
- Different fabric on seat and back at no upcharge
- CAL 133

Contact Spec Customer Service to railroad fabrics (specify repeat info and yardage requirement will be provided) and for repeats greater than 5" x 5"



## Medium Back Two Seater with full arms

COM 4.0 yds

1.0 yd COM per single seat

1.0 yd COM per single back

MODEL	COM	GR 1	GR 2	GR 3	GR 4	GR 5	GR 6
<b>4222M</b>	<b>1901</b>	<b>2115</b>	<b>2187</b>	<b>2329</b>	<b>2544</b>	<b>2705</b>	<b>2919</b>

Dimensions (inches)

seat H	18.0	seat W	21.0	arm H	27.0
total H	32.5	total W	48.75	depth	27.0

Exceeds BIFMA Seating Durability Test to 500 lbs per two seater  
CAL 133, add \$202 List per two seater



**4222M**  
82 lbs

## Medium Back Three Seater with full arms

COM 6.0 yds

1.0 yd COM per single seat

1.0 yd COM per single back

MODEL	COM	GR 1	GR 2	GR 3	GR 4	GR 5	GR 6
<b>4223M</b>	<b>2723</b>	<b>3045</b>	<b>3153</b>	<b>3367</b>	<b>3688</b>	<b>3933</b>	<b>4252</b>

Dimensions (inches)

seat H	18.0	seat W	21.0	arm H	27.0
total H	32.5	total W	71.5	depth	27.0

Exceeds BIFMA Seating Durability Test to 500 lbs per three seater  
CAL 133, add \$303 List per three seater



**4223M**  
120 lbs



# COMPANION Lounge Seating

Medium Back Bariatric Single Seater with arms

## Standard Features

- Separate seat and back
- Polyurethane arms or wood arms
- Fully welded 1.75" frame
- Frame in any Spectone color
- Velcro removable seat and back covers
- 5° seat pitch
- Use in connected layouts at no upcharge
- Glides
- Arms replaceable in the field
- Cannot connect bariatric seating to bariatric seating
- Ships assembled as 1, 2 or 3 seaters
- Ships 1/carton 20 cu ft

## Options

- Polyurethane arms are available in Black, Sterling Grey and Taupe (RAL 7006)
- Wood arms are available in 9 standard stains and stain-to-match at no upcharge
- Connected and freestanding tables
- Antibacterial and antimicrobial fabrics available
- Different fabric on seat and back at no upcharge
- CAL 133

Contact Spec Customer Service to railroad fabrics (specify repeat info and yardage requirement will be provided) and for repeats greater than 5" x 5"



## Medium Back Bariatric Single Seater with arms

COM 3.25 yds  
1.5 yd COM per single seat  
1.75 yd COM per single back

MODEL	COM	GR 1	GR 2	GR 3	GR 4	GR 5	GR 6
<b>4201G</b>	<b>1295</b>	<b>1478</b>	<b>1539</b>	<b>1662</b>	<b>1844</b>	<b>1984</b>	<b>2169</b>

Dimensions (inches)

seat H	18.0	seat W	30.0	arm H	27.0
total H	32.5	total W	35.0	depth	27.0

Exceeds BIFMA Seating Durability Test to 750 lbs per chair  
CAL 133, add \$152 List per chair



**4201G**  
54 lbs



# COMPANION Lounge Seating

Highback Single Seater with arms  
Ottoman and Headrest

## Standard Features

- Separate seat and back
- Polyurethane arms or wood arms
- Fully welded 1.75" frame
- Frame in any Spectone color
- Velcro removable seat and back covers
- 5° seat pitch
- Use in connected layouts at no upcharge
- Glides
- Arms replaceable in the field
- Ships assembled as 1, 2 or 3 seaters
- Ships 1/carton 19 cu ft
- Ottoman ships 1/carton 5 cu ft

## Options

- Polyurethane arms are available in Black, Sterling Grey and Taupe (RAL 7006)
- Wood arms are available in 9 standard stains and stain-to-match at no upcharge
- 7° seat pitch at no upcharge; 3° seat pitch, add \$22 List/seat
- Vinyl insert, add \$41 List/seat back
- Connected and freestanding tables
- Antibacterial and antimicrobial fabrics available
- Different fabric on seat and back at no upcharge
- CAL 133

Contact Spec Customer Service to railroad fabrics (specify repeat info and yardage requirement will be provided) and for repeats greater than 5" x 5"



## Highback Single Seater with arms

COM 2.25 yds  
1.0 yd COM per single seat  
1.25 yd COM per single back

MODEL	COM	GR 1	GR 2	GR 3	GR 4	GR 5	GR 6
<b>4201H</b>	<b>1150</b>	<b>1268</b>	<b>1309</b>	<b>1386</b>	<b>1505</b>	<b>1594</b>	<b>1712</b>

Dimensions (inches)

	seat H	18.0	seat W	21.0	arm H	27.0
total H	45.0	total W	26.0	depth	27.0	

Exceeds BIFMA Seating Durability Test to 500 lbs per chair  
CAL 133, add \$125 List per chair



**4201H**  
47 lbs

## Ottoman and Headrest

0.5 yd COM per ottoman  
0.5 yd COM per headrest

MODEL	COM	GR 1	GR 2	GR 3	GR 4	GR 5	GR 6
<b>4230F</b>	<b>394</b>	<b>425</b>	<b>437</b>	<b>459</b>	<b>492</b>	<b>518</b>	<b>562</b>
<b>42HR</b>	<b>66</b>	<b>82</b>	<b>87</b>	<b>95</b>	<b>108</b>	<b>118</b>	<b>138</b>

Ottoman Dimensions (inches)

H	11.5	W	19.25	depth	12.25
---	------	---	-------	-------	-------

CAL 133, add \$51 List per ottoman / \$51 per headrest



**4230F**  
16 lbs



**42HR**  
1 lbs





Pricing August 2017  
Discount 57.7% from List prices



SIN 711-16

# COMPANION Lounge Seating

## Half Panel Arm

To order half panel arms, add Z to model number, e.g. 4201HZ

**Pricing is for one half panel arm, e.g. for a single seater chair with half panel arms, add two half panel arms to cost of chair**

Contact Spec Customer Service to railroad fabrics (specify repeat info and yardage requirement will be provided) and for repeats greater than 5" x 5"

### Options

- Antibacterial and antimicrobial fabrics available
- CAL 133




---

### Half Panel Arm

---

COM 0.5 yds per half panel arm

MODEL	COM	GR 1	GR 2	GR 3	GR 4	GR 5	GR 6
<b>z</b>	<b>87</b>	<b>118</b>	<b>128</b>	<b>154</b>	<b>193</b>	<b>217</b>	<b>244</b>

CAL 133, add \$48 List per half panel arm



1.5 lbs per half panel arm

---



Pricing August 2017  
Discount 57.7% from List prices



SIN 711-16

# COMPANION Lounge Seating

Medium Back Easy Access Hip Single Seater with arms

## Standard Features

- Separate seat and back
- Polyurethane arms or wood arms
- Fully welded 1.75" frame
- Frame in any Spectone color
- Velcro removable seat and back covers
- 24" seat height, 3° seat pitch
- Footrest which assists entering/exiting chair
- Glides
- Arms replaceable in the field
- Ships assembled as 1, 2 or 3 seaters
- Ships 1/carton 19 cu ft

## Options

- Polyurethane arms are available in Black, Sterling Grey and Taupe (RAL 7006)
- Wood arms are available in 9 standard stains and stain-to-match at no upcharge
- Antibacterial and antimicrobial fabrics available
- Different fabric on seat and back at no upcharge
- CAL 133

Contact Spec Customer Service to railroad fabrics (specify repeat info and yardage requirement will be provided) and for repeats greater than 5" x 5"




---

## Medium Back Easy Access Hip Single Seater with arms

---

COM 2.0 yds  
1.0 yd COM per single seat  
1.0 yd COM per single back

MODEL	COM	GR 1	GR 2	GR 3	GR 4	GR 5	GR 6
<b>4231ME</b>	<b>1195</b>	<b>1302</b>	<b>1336</b>	<b>1410</b>	<b>1515</b>	<b>1596</b>	<b>1704</b>

Dimensions (inches)

seat H	24.0	seat W	21.0	arm H	33.75
total H	39.75	total W	26.0	depth	27.0

Exceeds BIFMA Seating Durability Test to 500 lbs per chair  
CAL 133, add \$101 List per chair



**4231ME**  
47 lbs



# COMPANION Lounge Seating

Freestanding Lounge Tables

Corner and Spacer Connecting Tables

## Standard Features

- Tops in laminate or veneer
- Select laminate tops from 15 standard laminates or choose any standard Wilsonart, Nevamar, Formica, Arborite and Pionite matte finish laminates at no upcharge.
- Freestanding lounge tables available with PVC Flat (PVF), 2mm (2MM) or hardwood (HB) edge
- Connecting table tops available with PVC Flat (PVF) edge, Self edge (SE) or hardwood (HB) edge
- 9 standard veneer and hardwood edge stains. Stain-to-match available at no upcharge.
- Fully welded frame with 1.75" steel legs
- Frame in any Spectone color
- Tops utilize Nu Green earth friendly core
- Glides
- 18" height

## Options

- Non-standard laminates, contact Spec for pricing
- Custom size spacer tables for restricted spaces
- Other sizes may be available



## Freestanding Lounge Tables

Model	Laminate PVF/SE/2MM	Laminate HB Edge	Veneer HB Edge	Weight	Cu.Ft.
42 - 24 DIA	<b>742</b>	<b>1078</b>	<b>1269</b>	27	7.2
42 - 24x24 SQ	<b>771</b>	<b>953</b>	<b>1097</b>	30	7.2
42 - 24x48 RE	<b>922</b>	<b>1122</b>	<b>1325</b>	44	18
42 - 30 DIA	<b>839</b>	<b>1170</b>	<b>1366</b>	37	13.5
42 - 30x30 SQ	<b>871</b>	<b>1003</b>	<b>1158</b>	40	13.5



## Corner and Spacer Connecting Tables

Model	Laminate PVF/SE	Weight	Cu.Ft.
42RC - 30x30 <i>Radius Corner Table</i>	<b>657</b>	31	2
42SC - 30x30 <i>Square Corner Table</i>	<b>657</b>	32	2
42TC45 - 19x23 <i>45 Degree Corner Table</i>	<b>657</b>	26	2
42ST - 21x24 <i>Spacer or End Table</i>	<b>506</b>	23	2

