



Pricing March 1, 2020  
Discount 57.7% from List prices

**spec**

MAS SIN 33721

## COMPANION Lounge Seating

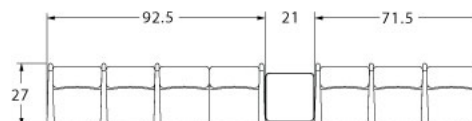
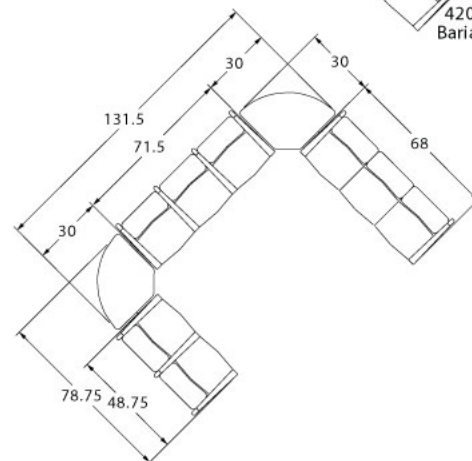
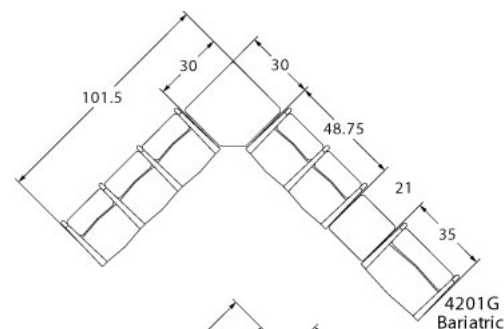
### LAYOUTS



### Description

- Spec presents the high performance Companion Series, offering warmth, durability, value and an unbeatable array of options and features.
- Your layout possibilities are unlimited with spacer, radius and corner tables – for both standard and bariatric seating in virtually any combination.
- Bariatric seating is a 30" wide seat and is load tested to 750 lbs. Cannot be connected to other bariatric seats.
- Velcro removable seats and backs are standard.
- 21" seat width is standard.
- Choice of wood or polyurethane arms which are replaceable in the field.
- High and medium back contours fit perfectly and provide exceptional comfort.
- All models offer a choice of no center arms, half arms or full arms to the floor.
- A 5° seat pitch is standard. An optional 7° pitch can be specified at no upcharge. A 3° pitch may be specified at an upcharge.
- 1.75" diameter wall-saving frame is standard to protect both wall and fabric.
- Rear glides and separate seat and back are standard.
- Please send a drawing of the configuration you require with your order.
- For fabrics you wish railroaded or repeats larger than 5" x 5", please contact the factory with repeat information and yardage requirement will be provided.

### LAYOUTS AND DIMENSIONS





Pricing March 1, 2020  
Discount 57.7% from List prices

**spec**

MAS SIN 33721

## COMPANION Lounge Seating



### PRODUCT CODE

**4201M**

#### Series

42 : Companion

#### Arm/Other

0 : Outside Arms  
1 : Half Arms  
2 : Full Arms  
3 : Easy Access Hip Chair

#### Number of Seats

1 : Single Seater  
2 : Two Seater  
3 : Three Seater

#### Chair Type

M : Mid Back  
H : Highback  
G : Bariatric  
ME : Hip Chair

### OPTIONS

#### SEAT PITCH



3°, 5° (standard) or  
7° Seat Pitch

#### ARM TYPE



Polyurethane



Wood

#### HALF PANEL ARM



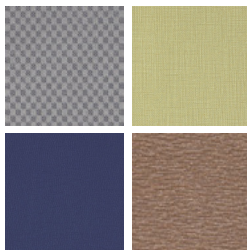
### FINISHES

#### FRAME



Select from one of our 76 standard Spectone colors

#### FABRIC



Select fabrics from one of our  
textile partners

#### ARMS



Black

Sterling Grey

Taupe

Select from one of our  
9 standard wood stains  
or stain-to-match at no  
upcharge

See Spectone Card or [specfurniture.com/materials/finishes](http://specfurniture.com/materials/finishes) for a complete list of finish options and colors.



Pricing March 1, 2020  
Discount 57.7% from List prices



## COMPANION Lounge Seating

MAS SIN 33721

### HOW TO ORDER



#### Specify Model

- A** Specify Fabric - Seat<sup>1</sup>  
*Manufacturer, Pattern Name, Color*
- B** Specify Fabric - Back<sup>1</sup>  
*Manufacturer, Pattern Name, Color*
- C** Specify Frame Finish
- D** Specify Arm Type and Color

Optional: 3°/7° Seat Pitch, CAL 133, Moisture Barrier,  
Half Panel Arm, Connecting and Freestanding Tables,  
Ottoman, Vinyl Headrest Insert

<sup>1</sup> When multiple fabrics are specified on two and three seat chairs, please provide a drawing and legend for fabric placement.

Model	Fabric - Seat	Fabric - Back	Frame Finish	Arm Type and Color	Seat Pitch
4201M	Momentum, Beeline, Canvas	Momentum, Beeline, Canvas	Silver	Polyurethane, Black	5°



Pricing March 1, 2020  
Discount 57.7% from List prices



MAS SIN 33721

## COMPANION Lounge Seating

### Medium Back Single Seater with arms

#### Standard Features

- Separate seat and back
- Polyurethane arms or wood arms
- Fully welded 1.75" frame
- Frame in any Spectone color
- Velcro removable seat and back covers
- 5° seat pitch
- Use in connected layouts at no upcharge
- Glides
- Arms replaceable in the field
- Ships assembled
- Ships 1/carton 15 cu ft

#### Options

- Polyurethane arms are available in Black, Sterling Grey and Taupe (RAL 7006)
- Wood arms are available in 9 standard stains and stain-to-match at no upcharge
- 7° seat pitch at no upcharge; 3° seat pitch, add \$24 List/seat
- Connected and freestanding tables
- Antibacterial and antimicrobial fabrics available
- Different fabric on seat and back at no upcharge
- CAL 133

Contact Spec Customer Service to railroad fabrics (specify repeat info and yardage requirement will be provided) and for repeats greater than 5" x 5"



#### Medium Back Single Seater with arms

COM 2.0 yds  
1.0 yd COM per single seat  
1.0 yd COM per single back

MODEL	COM	GR 1	GR 2	GR 3	GR 4	GR 5	GR 6
<b>4201M</b>	<b>1171</b>	<b>1286</b>	<b>1323</b>	<b>1402</b>	<b>1513</b>	<b>1602</b>	<b>1717</b>

#### Dimensions (inches)

seat H	18.0	seat W	21.0	arm H	27.0
total H	32.5	total W	26.0	depth	27.0

Exceeds BIFMA Seating Durability Test to 500 lbs per chair  
CAL 133, add \$108 List per chair



**4201M**  
45 lbs



Pricing March 1, 2020  
Discount 57.7% from List prices

**spec**

MAS SIN 33721

## COMPANION Lounge Seating

Medium Back Two and Three Seaters with outside arms

### Standard Features

- Separate seat and back
- Polyurethane arms or wood arms
- Fully welded 1.75" frame
- Frame in any Spectone color
- Velcro removable seat and back covers
- 5° seat pitch
- Use in connected layouts at no upcharge
- Glides
- Arms replaceable in the field
- Ships assembled
- Ships 1/carton 26 cu ft (2 seater),  
1/carton 39 cu ft (3 seater)

### Options

- Polyurethane arms are available in Black, Sterling Grey and Taupe (RAL 7006)
- Wood arms are available in 9 standard stains and stain-to-match at no upcharge
- 7° seat pitch at no upcharge; 3° seat pitch, add \$24 List/seat
- Connected and freestanding tables
- Antibacterial and antimicrobial fabrics available
- Different fabric on seat and back at no upcharge
- CAL 133

Contact Spec Customer Service to railroad fabrics (specify repeat info and yardage requirement will be provided) and for repeats greater than 5" x 5"



### Medium Back Two Seater with outside arms

COM 4.0 yds

1.0 yd COM per single seat

1.0 yd COM per single back

MODEL	COM	GR 1	GR 2	GR 3	GR 4	GR 5	GR 6
<b>4202M</b>	<b>1792</b>	<b>2023</b>	<b>2100</b>	<b>2251</b>	<b>2482</b>	<b>2655</b>	<b>2884</b>

Dimensions (inches)

seat H	18.0	seat W	21.0	arm H	27.0
total H	32.5	total W	47.0	depth	27.0

Exceeds BIFMA Seating Durability Test to 500 lbs per two seater  
CAL 133, add \$216 List per two seater



**4202M**  
75 lbs

### Medium Back Three Seater with outside arms

COM 6.0 yds

1.0 yd COM per single seat

1.0 yd COM per single back

MODEL	COM	GR 1	GR 2	GR 3	GR 4	GR 5	GR 6
<b>4203M</b>	<b>2432</b>	<b>2775</b>	<b>2890</b>	<b>3119</b>	<b>3461</b>	<b>3724</b>	<b>4067</b>

Dimensions (inches)

seat H	18.0	seat W	21.0	arm H	27.0
total H	32.5	total W	68.0	depth	27.0

Exceeds BIFMA Seating Durability Test to 500 lbs per three seater  
CAL 133, add \$324 List per three seater



**4203M**  
105 lbs



Pricing March 1, 2020  
Discount 57.7% from List prices

**spec**

MAS SIN 33721

## COMPANION Lounge Seating

Medium Back Two and Three Seaters with half arms

### Standard Features

- Separate seat and back
- Polyurethane arms or wood arms
- Fully welded 1.75" frame
- Frame in any Spectone color
- Velcro removable seat and back covers
- 5° seat pitch
- Use in connected layouts at no upcharge
- Glides
- Arms replaceable in the field
- Ships assembled
- Ships 1/carton 26 cu ft (2 seater),  
1/carton 39 cu ft (3 seater)

### Options

- Polyurethane arms are available in Black, Sterling Grey and Taupe (RAL 7006)
- Wood arms are available in 9 standard stains and stain-to-match at no upcharge
- 7° seat pitch at no upcharge; 3° seat pitch, add \$24 List/seat
- Connected and freestanding tables
- Antibacterial and antimicrobial fabrics available
- Different fabric on seat and back at no upcharge
- CAL 133

Contact Spec Customer Service to railroad fabrics (specify repeat info and yardage requirement will be provided) and for repeats greater than 5" x 5"



### Medium Back Two Seater with half arms

COM 4.0 yds

1.0 yd COM per single seat

1.0 yd COM per single back

MODEL	COM	GR 1	GR 2	GR 3	GR 4	GR 5	GR 6
<b>4212M</b>	<b>2006</b>	<b>2236</b>	<b>2313</b>	<b>2464</b>	<b>2693</b>	<b>2866</b>	<b>3099</b>

Dimensions (inches)

seat H	18.0	seat W	21.0	arm H	27.0
total H	32.5	total W	48.75	depth	27.0

Exceeds BIFMA Seating Durability Test to 500 lbs per two seater  
CAL 133, add \$216 List per two seater



**4212M**  
79 lbs

### Medium Back Three Seater with half arms

COM 6.0 yds

1.0 yd COM per single seat

1.0 yd COM per single back

MODEL	COM	GR 1	GR 2	GR 3	GR 4	GR 5	GR 6
<b>4213M</b>	<b>2775</b>	<b>3116</b>	<b>3232</b>	<b>3461</b>	<b>3805</b>	<b>4067</b>	<b>4412</b>

Dimensions (inches)

seat H	18.0	seat W	21.0	arm H	27.0
total H	32.5	total W	71.5	depth	27.0

Exceeds BIFMA Seating Durability Test to 500 lbs per three seater  
CAL 133, add \$324 List per three seater



**4213M**  
114 lbs



Pricing March 1, 2020  
Discount 57.7% from List prices

**spec**

MAS SIN 33721

## COMPANION Lounge Seating

Medium Back Two and Three Seaters with full arms

### Standard Features

- Separate seat and back
- Polyurethane arms or wood arms
- Fully welded 1.75" frame
- Frame in any Spectone color
- Velcro removable seat and back covers
- 5° seat pitch
- Use in connected layouts at no upcharge
- Glides
- Arms replaceable in the field
- Ships assembled
- Ships 1/carton 26 cu ft (2 seater),  
1/carton 39 cu ft (3 seater)

### Options

- Polyurethane arms are available in Black, Sterling Grey and Taupe (RAL 7006)
- Wood arms are available in 9 standard stains and stain-to-match at no upcharge
- 7° seat pitch at no upcharge; 3° seat pitch, add \$24 List/seat
- Connected and freestanding tables
- Antibacterial and antimicrobial fabrics available
- Different fabric on seat and back at no upcharge
- CAL 133

Contact Spec Customer Service to railroad fabrics (specify repeat info and yardage requirement will be provided) and for repeats greater than 5" x 5"



### Medium Back Two Seater with full arms

COM 4.0 yds

1.0 yd COM per single seat

1.0 yd COM per single back

MODEL	COM	GR 1	GR 2	GR 3	GR 4	GR 5	GR 6
<b>4222M</b>	<b>2036</b>	<b>2265</b>	<b>2343</b>	<b>2495</b>	<b>2725</b>	<b>2897</b>	<b>3127</b>

Dimensions (inches)

seat H	18.0	seat W	21.0	arm H	27.0
total H	32.5	total W	48.75	depth	27.0

Exceeds BIFMA Seating Durability Test to 500 lbs per two seater  
CAL 133, add \$216 List per two seater



**4222M**  
82 lbs

### Medium Back Three Seater with full arms

COM 6.0 yds

1.0 yd COM per single seat

1.0 yd COM per single back

MODEL	COM	GR 1	GR 2	GR 3	GR 4	GR 5	GR 6
<b>4223M</b>	<b>2917</b>	<b>3261</b>	<b>3378</b>	<b>3607</b>	<b>3951</b>	<b>4213</b>	<b>4555</b>

Dimensions (inches)

seat H	18.0	seat W	21.0	arm H	27.0
total H	32.5	total W	71.5	depth	27.0

Exceeds BIFMA Seating Durability Test to 500 lbs per three seater  
CAL 133, add \$324 List per three seater



**4223M**  
120 lbs





Pricing March 1, 2020  
Discount 57.7% from List prices

spec

MAS SIN 33721

## COMPANION Lounge Seating

Medium Back Bariatric Single Seater with arms

### Standard Features

- Separate seat and back
- Polyurethane arms or wood arms
- Fully welded 1.75" frame
- Frame in any Spectone color
- Velcro removable seat and back covers
- 5° seat pitch
- Use in connected layouts at no upcharge
- Glides
- Arms replaceable in the field
- Cannot connect bariatric seating to bariatric seating
- Ships assembled
- Ships 1/carton 20 cu ft

### Options

- Polyurethane arms are available in Black, Sterling Grey and Taupe (RAL 7006)
- Wood arms are available in 9 standard stains and stain-to-match at no upcharge
- Connected and freestanding tables
- Antibacterial and antimicrobial fabrics available
- Different fabric on seat and back at no upcharge
- CAL 133

Contact Spec Customer Service to railroad fabrics  
(specify repeat info and yardage requirement will  
be provided) and for repeats greater than 5" x 5"



### Medium Back Bariatric Single Seater with arms

COM 3.25 yds

1.5 yd COM per single seat

1.75 yd COM per single back

MODEL	COM	GR 1	GR 2	GR 3	GR 4	GR 5	GR 6
<b>4201G</b>	<b>1387</b>	<b>1583</b>	<b>1648</b>	<b>1780</b>	<b>1975</b>	<b>2126</b>	<b>2323</b>

Dimensions (inches)

seat H	18.0	seat W	30.0	arm H	27.0
total H	32.5	total W	35.0	depth	27.0

Exceeds BIFMA Seating Durability Test to 750 lbs per chair  
CAL 133, add \$163 List per chair



**4201G**  
56 lbs





Pricing March 1, 2020  
Discount 57.7% from List prices

**spec**

MAS SIN 33721

## COMPANION Lounge Seating

Highback Single Seater with arms  
Ottoman

### Standard Features

- Separate seat and back
- Polyurethane arms or wood arms
- Fully welded 1.75" frame
- Frame in any Spectone color
- Velcro removable seat and back covers
- 5° seat pitch
- Use in connected layouts at no upcharge
- Glides
- Arms replaceable in the field
- Ships assembled
- Ships 1/carton 19 cu ft
- Ottoman ships 1/carton 5 cu ft

### Options

- Polyurethane arms are available in Black, Sterling Grey and Taupe (RAL 7006)
- Wood arms are available in 9 standard stains and stain-to-match at no upcharge
- 7° seat pitch at no upcharge; 3° seat pitch, add \$24 List/seat
- Vinyl insert on top of the back, add \$44 List/seat back
- Connected and freestanding tables
- Antibacterial and antimicrobial fabrics available
- Different fabric on seat and back at no upcharge
- CAL 133

Contact Spec Customer Service to railroad fabrics (specify repeat info and yardage requirement will be provided) and for repeats greater than 5" x 5"



### Highback Single Seater with arms

COM 2.25 yds

1.0 yd COM per single seat

1.25 yd COM per single back

MODEL	COM	GR 1	GR 2	GR 3	GR 4	GR 5	GR 6
<b>4201H</b>	<b>1232</b>	<b>1358</b>	<b>1402</b>	<b>1485</b>	<b>1612</b>	<b>1708</b>	<b>1834</b>

Dimensions (inches)

seat H	18.0	seat W	21.0	arm H	27.0
total H	45.0	total W	26.0	depth	27.0

Exceeds BIFMA Seating Durability Test to 500 lbs per chair  
CAL 133, add \$134 List per chair



**4201H**  
48 lbs

### Ottoman

0.5 yd COM per ottoman

MODEL	COM	GR 1	GR 2	GR 3	GR 4	GR 5	GR 6
<b>4230F</b>	<b>422</b>	<b>456</b>	<b>468</b>	<b>492</b>	<b>527</b>	<b>555</b>	<b>602</b>

Ottoman Dimensions (inches)

H	11.5	W	19.25	depth	12.25
---	------	---	-------	-------	-------

CAL 133, add \$55 List



**4230F**  
16 lbs



Pricing March 1, 2020  
Discount 57.7% from List prices



MAS SIN 33721

## COMPANION Lounge Seating

### Half Panel Arm

To order half panel arms, add Z to model number,  
e.g. 4201HZ

***Pricing is for one half panel arm, e.g. for a single  
seater chair with half panel arms, add two half panel  
arms to cost of chair***

*Contact Spec Customer Service to railroad fabrics  
(specify repeat info and yardage requirement will  
be provided) and for repeats greater than 5" x 5"*

### Options

- Antibacterial and antimicrobial fabrics available
- CAL 133



---

### Half Panel Arm

---

COM 0.5 yds per half panel arm

MODEL	COM	GR 1	GR 2	GR 3	GR 4	GR 5	GR 6
<b>z</b>	<b>94</b>	<b>127</b>	<b>137</b>	<b>165</b>	<b>207</b>	<b>233</b>	<b>261</b>

CAL 133, add \$51 List per half panel arm



1.5 lbs per half panel arm



Pricing March 1, 2020  
Discount 57.7% from List prices



MAS SIN 33721

## COMPANION Lounge Seating

Medium Back Easy Access Hip Single Seater with arms

### Standard Features

- Separate seat and back
- Polyurethane arms or wood arms
- Fully welded 1.75" frame
- Frame in any Spectone color
- Velcro removable seat and back covers
- 24" seat height, 3° seat pitch
- Footrest which assists entering/exiting chair
- Glides
- Arms replaceable in the field
- Ships assembled
- Ships 1/carton 19 cu ft

### Options

- Polyurethane arms are available in Black, Sterling Grey and Taupe (RAL 7006)
- Wood arms are available in 9 standard stains and stain-to-match at no upcharge
- Antibacterial and antimicrobial fabrics available
- Different fabric on seat and back at no upcharge
- CAL 133

Contact Spec Customer Service to railroad fabrics  
(specify repeat info and yardage requirement will  
be provided) and for repeats greater than 5" x 5"



### Medium Back Easy Access Hip Single Seater with arms

COM 2.0 yds  
1.0 yd COM per single seat  
1.0 yd COM per single back

MODEL	COM	GR 1	GR 2	GR 3	GR 4	GR 5	GR 6
<b>4231ME</b>	<b>1280</b>	<b>1395</b>	<b>1431</b>	<b>1510</b>	<b>1622</b>	<b>1710</b>	<b>1825</b>

#### Dimensions (inches)

seat H	24.0	seat W	21.0	arm H	33.75
total H	39.75	total W	26.0	depth	27.0

Exceeds BIFMA Seating Durability Test to 500 lbs per chair  
CAL 133, add \$108 List per chair



**4231ME**  
47 lbs



Pricing March 1, 2020  
Discount 57.7% from List prices

spec™

MAS SIN 33721

## COMPANION Lounge Seating

Freestanding Lounge Tables

Corner and Spacer Connecting Tables

### Standard Features

- Tops in laminate or veneer
- Select laminate tops from 15 standard laminates or choose any standard Wilsonart, Nevamar, Formica, Arborite and Pionite matte finish laminates at no upcharge.
- Freestanding lounge tables available with PVC Flat (PVF), 2mm (2MM), exposed Baltic Birch plywood (PF, PKNR) or hardwood (HB) edge
- Connecting table tops available with PVC Flat (PVF) edge, Self edge (SE) or hardwood (HB) edge
- 9 standard veneer and hardwood edge stains. Stain-to-match available at no upcharge.
- Fully welded frame with 1.75" steel legs
- Frame in any Spectone color
- Tops utilize NU Green earth friendly core
- Glides
- 18" height

### Options

- Non-standard laminates, contact Spec for pricing
- Custom size spacer tables for restricted spaces
- Other sizes may be available



### Freestanding Lounge Tables

Model	Laminate PVF/SE/2MM	Laminate PF/PKNR/HB	Veneer HB	Weight	Cu.Ft.
42 - 24 DIA	<b>795</b>	<b>1154</b>	<b>1359</b>	27	7.2
42 - 24x24 SQ	<b>826</b>	<b>1021</b>	<b>1175</b>	30	7.2
42 - 24x48 RE	<b>988</b>	<b>1202</b>	<b>1420</b>	44	18
42 - 30 DIA	<b>899</b>	<b>1253</b>	<b>1463</b>	37	13.5
42 - 30x30 SQ	<b>933</b>	<b>1074</b>	<b>1241</b>	40	13.5



### Corner and Spacer Connecting Tables

Model	Laminate PVF/SE	Weight	Cu.Ft.
42RC - 30x30 <i>Radius Corner Table</i>	<b>704</b>	31	2
42SC - 30x30 <i>Square Corner Table</i>	<b>704</b>	32	2
42TC45 - 19x23 <i>45 Degree Corner Table</i>	<b>704</b>	26	2
42ST - 21x24 <i>Spacer or End Table</i>	<b>542</b>	23	2

