

COOPER COLLECTION - COOPER ROCKS Lounge Seating



PRODUCT CODE

6 4 01 HR

Collection
6 : Cooper

Series
4 : Huntsville
7 : Midland

Number of Seats
01 : Single Seater

Chair Type
MR : Mid Back
HR : Highback



OPTIONS

BACK OPTIONS



Highback



Mid Back

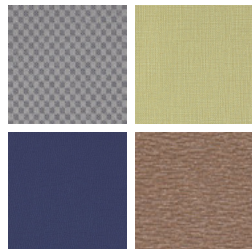
FINISHES

FRAME



Select from one of our 9 standard wood stains or stain-to-match at no upcharge

FABRIC



Select fabrics from one of our textile partners

ARM OPTIONS

Arm options will vary depending on the Series. Please refer to the price list for more information on the Series you would like to specify.

COOPER COLLECTION - COOPER ROCKS Lounge Seating

Designed for today's healthcare facilities
Huntsville Medium and Highback with arms

Standard Features

- Separate seat and back
- Built in headrest on highback
- Total range of motion is 2" down and 6" back
- Wood arms
- Wood components in Beech, in any of 9 standard stains or stain-to-match at no upcharge
- Wall-saving frame
- Velcro removable back covers
- Replaceable seats
- Threaded replaceable glides
- Ships assembled
- Ships 1/carton 15 cu ft (medium back), 1/carton 19 cu ft (highback)

Options

- Rounded polyurethane arms, field-replaceable
- Matching ottoman
- Removable headrest
- No headrest
- Antibacterial and antimicrobial fabrics available
- Different fabric on seat and back at no upcharge
- CAL 133

Contact Spec™ Customer Service to railroad fabrics (specify repeat info and yardage requirement will be provided) and for repeats greater than 5" x 5"



Huntsville Medium back with arms

COM 1.75 yds
0.75 yd COM per single seat
1.0 yd COM per single back

MODEL	COM	GR 1	GR 2	GR 3	GR 4	GR 5	GR 6
6401MR	1388	1466	1491	1542	1620	1679	1753

For polyurethane arms add suffix P and \$130

Dimensions (inches)

	seat H	18.0	seat W	21.0	arm H	25.0
total H	33.75		total W	25.25	depth	27.5

Exceeds BIFMA Seating Durability Test to 350 lbs per seat
CAL 133, add \$110 List per seat



6401MR
46 lbs

Huntsville Highback with arms

COM 2.5 yds
0.75 yd COM per single seat
1.75 yd COM per single back

MODEL	COM	GR 1	GR 2	GR 3	GR 4	GR 5	GR 6
6401HR	1635	1758	1798	1881	2003	2098	2220

For polyurethane arms add suffix P and \$130

Dimensions (inches)

	seat H	18.0	seat W	21.0	arm H	25.0
total H	47.5		total W	25.5	depth	27.5

Exceeds BIFMA Seating Durability Test to 350 lbs per seat
CAL 133, add \$121 List per seat



6401HR
50 lbs



COOPER COLLECTION - COOPER ROCKS Lounge Seating

Designed for today's healthcare facilities
Midland Medium and Highback with arms

Standard Features

- Separate seat and back
- Built in headrest on highback
- Total range of motion is 2" down and 6" back
- Wood arms
- Wood components in Beech, in any of 9 standard stains or stain-to-match at no upcharge
- Wall-saving frame
- Velcro removable back covers
- Replaceable seats
- Threaded replaceable glides
- Ships assembled
- Ships 1/carton 15 cu ft (medium back), 1/carton 19 cu ft (highback)

Options

- Replaceable polyurethane arm caps, add \$94 List
- Matching ottoman
- Removable headrest
- No headrest
- Antibacterial and antimicrobial fabrics available
- Different fabric on seat and back at no upcharge
- CAL 133

Contact Spec Customer Service to railroad fabrics (specify repeat info and yardage requirement will be provided) and for repeats greater than 5" x 5"



Midland Medium back with arms

COM 1.75 yds
0.75 yd COM per single seat
1.0 yd COM per single back

MODEL	COM	GR 1	GR 2	GR 3	GR 4	GR 5	GR 6
6701MR	1274	1353	1378	1428	1505	1564	1640

Dimensions (inches)

	seat H	18.0	seat W	21.0	arm H	25.0
total H	33.75		total W	25.5	depth	27.5

Exceeds BIFMA Seating Durability Test to 350 lbs per seat
CAL 133, add \$110 List per seat



6701MR
44 lbs

Midland Highback with arms

COM 2.5 yds
0.75 yd COM per single seat
1.75 yd COM per single back

MODEL	COM	GR 1	GR 2	GR 3	GR 4	GR 5	GR 6
6701HR	1538	1668	1710	1795	1923	2020	2149

Dimensions (inches)

	seat H	18.0	seat W	21.0	arm H	25.0
total H	47.5		total W	25.5	depth	27.5

Exceeds BIFMA Seating Durability Test to 350 lbs per seat
CAL 133, add \$121 List per seat



6701HR
48 lbs