



# COOPER COLLECTION - COOPER ROCKS Lounge Seating



## PRODUCT CODE

6 7 01 HR



## OPTIONS

### BACK OPTIONS



Highback



Mid Back

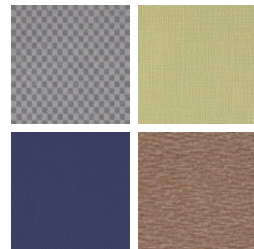
## FINISHES

### FRAME



Select from one of our 9 standard wood stains or stain-to-match at no upcharge

### FABRIC



Select fabrics from one of our textile partners

### ARM OPTIONS

Arm options will vary depending on the Series. Please refer to the price list for more information on the Series you would like to specify.



# COOPER COLLECTION - COOPER ROCKS Lounge Seating

Designed for today's healthcare facilities  
Huntsville Medium and Highback with arms

## Standard Features

- Separate seat and back
- Built in headrest on highback
- Total range of motion is 2" down and 6" back
- Wood arms
- Wood components in Beech, in any of 9 standard stains or stain-to-match at no upcharge
- Wall-saving frame
- Velcro removable back covers
- Replaceable seats
- Threaded replaceable glides
- Ships assembled
- Ships 1/carton 15 cu ft (medium back), 1/carton 19 cu ft (highback)

## Options

- Rounded polyurethane arms, field-replaceable
- Matching ottoman
- Removable headrest
- No headrest
- Antibacterial and antimicrobial fabrics available
- Different fabric on seat and back at no upcharge
- CAL 133

Contact Spec™ Customer Service to railroad fabrics (specify repeat info and yardage requirement will be provided) and for repeats greater than 5" x 5"



## Huntsville Medium back with arms

COM 1.75 yds  
0.75 yd COM per single seat  
1.0 yd COM per single back

MODEL	COM	GR 1	GR 2	GR 3	GR 4	GR 5	GR 6
<b>6401MR</b>	<b>1444</b>	<b>1525</b>	<b>1551</b>	<b>1604</b>	<b>1685</b>	<b>1746</b>	<b>1823</b>

For polyurethane arms add suffix P and \$134

Dimensions (inches)

	seat H	18.0	seat W	21.0	arm H	25.0
total H	33.75		total W	25.25	depth	27.5

Exceeds BIFMA Seating Durability Test to 350 lbs per seat  
CAL 133, add \$114 List per seat



**6401MR**  
46 lbs

## Huntsville Highback with arms

COM 2.5 yds  
0.75 yd COM per single seat  
1.75 yd COM per single back

MODEL	COM	GR 1	GR 2	GR 3	GR 4	GR 5	GR 6
<b>6401HR</b>	<b>1700</b>	<b>1828</b>	<b>1870</b>	<b>1956</b>	<b>2083</b>	<b>2182</b>	<b>2309</b>

For polyurethane arms add suffix P and \$134

Dimensions (inches)

	seat H	18.0	seat W	21.0	arm H	25.0
total H	47.5		total W	25.5	depth	27.5

Exceeds BIFMA Seating Durability Test to 350 lbs per seat  
CAL 133, add \$126 List per seat



**6401HR**  
50 lbs

# COOPER COLLECTION - COOPER ROCKS Lounge Seating

Designed for today's healthcare facilities  
Midland Medium and Highback with arms

## Standard Features

- Separate seat and back
- Built in headrest on highback
- Total range of motion is 2" down and 6" back
- Wood arms
- Wood components in Beech, in any of 9 standard stains or stain-to-match at no upcharge
- Wall-saving frame
- Velcro removable back covers
- Replaceable seats
- Threaded replaceable glides
- Ships assembled
- Ships 1/carton 15 cu ft (medium back), 1/carton 19 cu ft (highback)

## Options

- Replaceable polyurethane arm caps, add \$98 List
- Matching ottoman
- Removable headrest
- No headrest
- Antibacterial and antimicrobial fabrics available
- Different fabric on seat and back at no upcharge
- CAL 133

Contact Spec Customer Service to railroad fabrics (specify repeat info and yardage requirement will be provided) and for repeats greater than 5" x 5"



## Midland Medium back with arms

COM 1.75 yds  
0.75 yd COM per single seat  
1.0 yd COM per single back

MODEL	COM	GR 1	GR 2	GR 3	GR 4	GR 5	GR 6
<b>6701MR</b>	<b>1325</b>	<b>1407</b>	<b>1433</b>	<b>1485</b>	<b>1565</b>	<b>1627</b>	<b>1706</b>

Dimensions (inches)

	seat H	18.0	seat W	21.0	arm H	25.0
total H	33.75		total W	25.5	depth	27.5

Exceeds BIFMA Seating Durability Test to 350 lbs per seat  
CAL 133, add \$114 List per seat



**6701MR**  
44 lbs

## Midland Highback with arms

COM 2.5 yds  
0.75 yd COM per single seat  
1.75 yd COM per single back

MODEL	COM	GR 1	GR 2	GR 3	GR 4	GR 5	GR 6
<b>6701HR</b>	<b>1600</b>	<b>1735</b>	<b>1778</b>	<b>1867</b>	<b>2000</b>	<b>2101</b>	<b>2235</b>

Dimensions (inches)

	seat H	18.0	seat W	21.0	arm H	25.0
total H	47.5		total W	25.5	depth	27.5

Exceeds BIFMA Seating Durability Test to 350 lbs per seat  
CAL 133, add \$126 List per seat



**6701HR**  
48 lbs