



Pricing March 1, 2019  
Discount 57.7% from List prices



SIN 711-16

# COOPER COLLECTION - COOPER ROCKS Lounge Seating



## PRODUCT CODE

**6 4 01 HR**

|                   |                               |                        |                                |
|-------------------|-------------------------------|------------------------|--------------------------------|
| <b>Collection</b> | <b>Series</b>                 | <b>Number of Seats</b> | <b>Chair Type</b>              |
| 6 : Cooper        | 4 : Huntsville<br>7 : Midland | 01 : Single Seater     | MR : Mid Back<br>HR : Highback |



## OPTIONS

### BACK OPTIONS



Highback



Mid Back

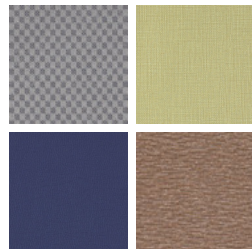
## FINISHES

### FRAME



Select from one of our 9 standard wood stains or stain-to-match at no upcharge

### FABRIC



Select fabrics from one of our textile partners

### ARM OPTIONS

*Arm options will vary depending on the Series. Please refer to the price list for more information on the Series you would like to specify.*



Pricing March 1, 2019  
Discount 57.7% from List prices



SIN 711-16

# COOPER COLLECTION - COOPER ROCKS Lounge Seating

Designed for today's healthcare facilities  
Huntsville Medium and Highback with arms

## Standard Features

- Separate seat and back
- Built in headrest on highback
- Total range of motion is 2" down and 6" back
- Wood arms
- Wood components in Beech, in any of 9 standard stains or stain-to-match at no upcharge
- Wall-saving frame
- Velcro removable back covers
- Replaceable seats
- Threaded replaceable glides
- Ships assembled
- Ships 1/carton 15 cu ft (medium back), 1/carton 19 cu ft (highback)

## Options

- Rounded polyurethane arms, field-replaceable
- Matching ottoman
- Removable headrest
- No headrest
- Antibacterial and antimicrobial fabrics available
- Different fabric on seat and back at no upcharge
- CAL 133

Contact Spec Customer Service to railroad fabrics (specify repeat info and yardage requirement will be provided) and for repeats greater than 5" x 5"



## Huntsville Medium back with arms

COM 1.75 yds  
0.75 yd COM per single seat  
1.0 yd COM per single back

| MODEL  | COM  | GR 1 | GR 2 | GR 3 | GR 4 | GR 5 | GR 6 |
|--------|------|------|------|------|------|------|------|
| 6401MR | 1531 | 1619 | 1646 | 1705 | 1793 | 1859 | 1946 |

For polyurethane arms add suffix P and \$128

Dimensions (inches)

|         | seat H | 18.0 | seat W  | 21.0  | arm H | 25.0 |
|---------|--------|------|---------|-------|-------|------|
| total H | 33.75  |      | total W | 25.25 | depth | 27.5 |

Exceeds BIFMA Seating Durability Test to 350 lbs per seat  
CAL 133, add \$115 List per seat



6401MR  
46 lbs

## Hunstville Highback with arms

COM 2.5 yds  
0.75 yd COM per single seat  
1.75 yd COM per single back

| MODEL  | COM  | GR 1 | GR 2 | GR 3 | GR 4 | GR 5 | GR 6 |
|--------|------|------|------|------|------|------|------|
| 6401HR | 1765 | 1904 | 1949 | 2040 | 2175 | 2279 | 2454 |

For polyurethane arms add suffix P and \$128

Dimensions (inches)

|         | seat H | 18.0 | seat W  | 21.0 | arm H | 25.0 |
|---------|--------|------|---------|------|-------|------|
| total H | 47.5   |      | total W | 25.5 | depth | 27.5 |

Exceeds BIFMA Seating Durability Test to 350 lbs per seat  
CAL 133, add \$129 List per seat



6401HR  
50 lbs



Pricing March 1, 2019  
Discount 57.7% from List prices



SIN 711-16

# COOPER COLLECTION - COOPER ROCKS Lounge Seating

Designed for today's healthcare facilities  
Midland Medium and Highback with arms

## Standard Features

- Separate seat and back
- Built in headrest on highback
- Total range of motion is 2" down and 6" back
- Wood arms
- Wood components in Beech, in any of 9 standard stains or stain-to-match at no upcharge
- Wall-saving frame
- Velcro removable back covers
- Replaceable seats
- Threaded replaceable glides
- Ships assembled
- Ships 1/carton 15 cu ft (medium back), 1/carton 19 cu ft (highback)

## Options

- Replaceable polyurethane arm caps, add \$94 List
- Matching ottoman
- Removable headrest
- No headrest
- Antibacterial and antimicrobial fabrics available
- Different fabric on seat and back at no upcharge
- CAL 133

Contact Spec Customer Service to railroad fabrics (specify repeat info and yardage requirement will be provided) and for repeats greater than 5" x 5"



## Midland Medium back with arms

COM 1.75 yds  
0.75 yd COM per single seat  
1.0 yd COM per single back

| MODEL  | COM  | GR 1 | GR 2 | GR 3 | GR 4 | GR 5 | GR 6 |
|--------|------|------|------|------|------|------|------|
| 6701MR | 1348 | 1435 | 1463 | 1522 | 1607 | 1675 | 1762 |

Dimensions (inches)

| seat H  | 18.0  | seat W  | 21.0 | arm H | 25.0 |
|---------|-------|---------|------|-------|------|
| total H | 33.75 | total W | 25.5 | depth | 27.5 |

Exceeds BIFMA Seating Durability Test to 350 lbs per seat  
CAL 133, add \$115 List per seat



6701MR  
44 lbs

## Midland Highback with arms

COM 2.5 yds  
0.75 yd COM per single seat  
1.75 yd COM per single back

| MODEL  | COM  | GR 1 | GR 2 | GR 3 | GR 4 | GR 5 | GR 6 |
|--------|------|------|------|------|------|------|------|
| 6701HR | 1641 | 1786 | 1833 | 1931 | 2075 | 2186 | 2332 |

Dimensions (inches)

| seat H  | 18.0 | seat W  | 21.0 | arm H | 25.0 |
|---------|------|---------|------|-------|------|
| total H | 47.5 | total W | 25.5 | depth | 27.5 |

Exceeds BIFMA Seating Durability Test to 350 lbs per seat  
CAL 133, add \$129 List per seat



6701HR  
48 lbs