



Pricing March 1, 2020
Discount 57.7% from List prices



MAS SIN 33721

COOPER COLLECTION - COOPER ROCKS Lounge Seating



PRODUCT CODE

6 7 01 HR

Collection	Series	Number of Seats	Chair Type
6 : Cooper	4 : Huntsville 7 : Midland	01 : Single Seater	MR : Mid Back HR : Highback



OPTIONS

BACK OPTIONS



Highback



Mid Back

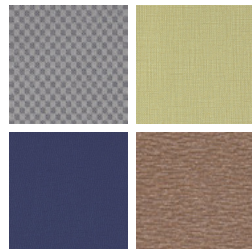
FINISHES

FRAME



Select from one of our 9 standard wood stains or stain-to-match at no upcharge

FABRIC



Select fabrics from one of our textile partners

ARM OPTIONS

Arm options will vary depending on the Series. Please refer to the price list for more information on the Series you would like to specify.



Pricing March 1, 2020
Discount 57.7% from List prices



MAS SIN 33721

COOPER COLLECTION - COOPER ROCKS Lounge Seating

Designed for today's healthcare facilities
Huntsville Medium and Highback with arms

Standard Features

- Separate seat and back
- Built in headrest on highback
- Total range of motion is 2" down and 6" back
- Wood arms
- Wood components in Beech, in any of 9 standard stains or stain-to-match at no upcharge
- Wall-saving frame
- Velcro removable back covers
- Replaceable seats
- Threaded replaceable glides
- Ships assembled
- Ships 1/carton 15 cu ft (medium back), 1/carton 19 cu ft (highback)

Options

- Rounded polyurethane arms, field-replaceable
- Matching ottoman
- Removable headrest
- No headrest
- Antibacterial and antimicrobial fabrics available
- Different fabric on seat and back at no upcharge
- CAL 133

Contact Spec Customer Service to railroad fabrics (specify repeat info and yardage requirement will be provided) and for repeats greater than 5" x 5"



Huntsville Medium back with arms

COM 1.75 yds
0.75 yd COM per single seat
1.0 yd COM per single back

MODEL	COM	GR 1	GR 2	GR 3	GR 4	GR 5	GR 6
6401MR	1592	1684	1712	1773	1865	1933	2024

For polyurethane arms add suffix P and \$134

Dimensions (inches)

seat H	18.0	seat W	21.0	arm H	25.0
total H	33.75	total W	25.25	depth	27.5

Exceeds BIFMA Seating Durability Test to 350 lbs per seat
CAL 133, add \$120 List per seat



6401MR
46 lbs

Huntsville Highback with arms

COM 2.5 yds
0.75 yd COM per single seat
1.75 yd COM per single back

MODEL	COM	GR 1	GR 2	GR 3	GR 4	GR 5	GR 6
6401HR	1836	1980	2027	2122	2262	2370	2552

For polyurethane arms add suffix P and \$134

Dimensions (inches)

seat H	18.0	seat W	21.0	arm H	25.0
total H	47.5	total W	25.5	depth	27.5

Exceeds BIFMA Seating Durability Test to 350 lbs per seat
CAL 133, add \$134 List per seat



6401HR
50 lbs



Pricing March 1, 2020
Discount 57.7% from List prices



MAS SIN 33721

COOPER COLLECTION - COOPER ROCKS Lounge Seating

Designed for today's healthcare facilities
Midland Medium and Highback with arms

Standard Features

- Separate seat and back
- Built in headrest on highback
- Total range of motion is 2" down and 6" back
- Wood arms
- Wood components in Beech, in any of 9 standard stains or stain-to-match at no upcharge
- Wall-saving frame
- Velcro removable back covers
- Replaceable seats
- Threaded replaceable glides
- Ships assembled
- Ships 1/carton 15 cu ft (medium back), 1/carton 19 cu ft (highback)

Options

- Replaceable polyurethane arm caps, add \$98 List
- Matching ottoman
- Removable headrest
- No headrest
- Antibacterial and antimicrobial fabrics available
- Different fabric on seat and back at no upcharge
- CAL 133

Contact Spec Customer Service to railroad fabrics (specify repeat info and yardage requirement will be provided) and for repeats greater than 5" x 5"



Midland Medium back with arms

COM 1.75 yds
0.75 yd COM per single seat
1.0 yd COM per single back

MODEL	COM	GR 1	GR 2	GR 3	GR 4	GR 5	GR 6
6701MR	1402	1492	1522	1583	1671	1742	1832

Dimensions (inches)

seat H	18.0	seat W	21.0	arm H	25.0
total H	33.75	total W	25.5	depth	27.5

Exceeds BIFMA Seating Durability Test to 350 lbs per seat
CAL 133, add \$120 List per seat



6701MR
44 lbs

Midland Highback with arms

COM 2.5 yds
0.75 yd COM per single seat
1.75 yd COM per single back

MODEL	COM	GR 1	GR 2	GR 3	GR 4	GR 5	GR 6
6701HR	1707	1857	1906	2008	2158	2273	2425

Dimensions (inches)

seat H	18.0	seat W	21.0	arm H	25.0
total H	47.5	total W	25.5	depth	27.5

Exceeds BIFMA Seating Durability Test to 350 lbs per seat
CAL 133, add \$134 List per seat



6701HR
48 lbs