

COOPER TABLES



DWIGHT
COOPER61

BALA
COOPER62

HUNTSVILLE
COOPER64

MIDLAND
COOPER67

PRODUCT CODE

2448 RE - COOPER 64

Top Size

Width x Length or
Diameter

Top Shape

D : Round
SQ : Square
RE : Rectangle

Collection

Cooper

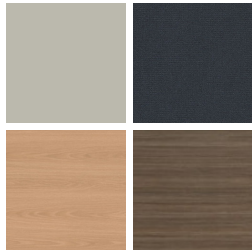
Series

61 : Dwight
62 : Bala

64 : Huntsville
67 : Midland

FINISHES

LAMINATE



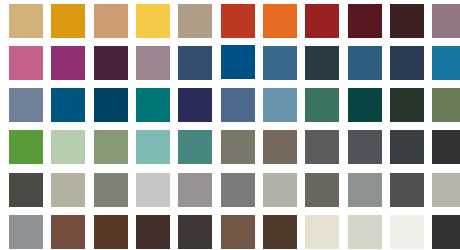
Select from 15 standard laminates or choose any standard Wilsonart, Nevamar, Formica, Arborite and Pionite matte finish laminates at no upcharge

VENEER



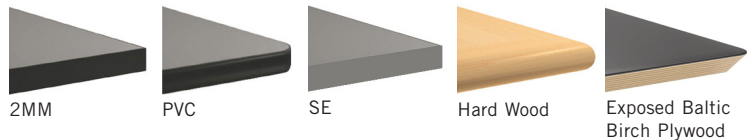
Select from one of our 9 standard wood stains or stain-to-match at no upcharge

BASE



Select from one of our 76 standard Spectone colors

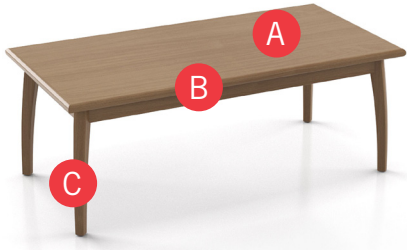
EDGE



See Spectone Card or specfurniture.com/materials/finishes for a complete list of finish options and colors.

COOPER TABLES

HOW TO ORDER



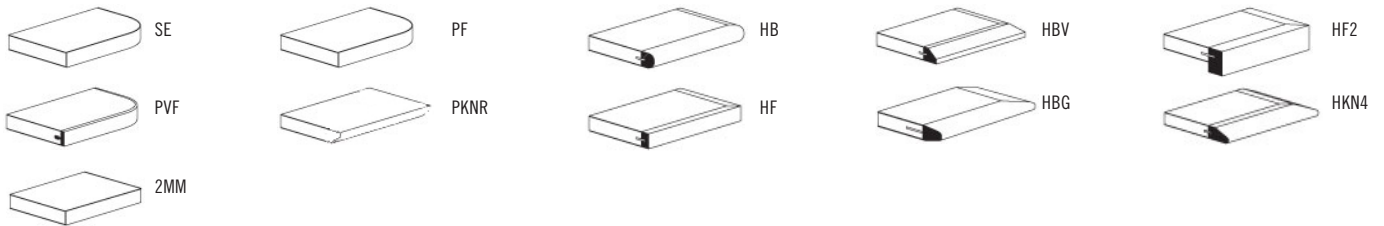
Specify Top Size (Width x Length) and Shape

- A** Specify Top Type and Finish
For Laminate Top: Manufacturer, Laminate Name, Laminate Code
For Veneer Top: Wood Stain
- B** Specify Edge Type, (for hardwood: Style), and Finish
PVC/2mm/Self Edge/Exposed Baltic Birch Plywood/Hardwood
- C** Specify Base Style, Wood/Metal Base Finish, Wood Table Skirt Finish
For Wood: Wood Stain
For Metal: RAL Finish

Top Size and Shape	Top Type and Finish	Edge Type and Finish	Base Style, Base Finish, Table Skirt Finish
24 x 48, Rectangle	Laminate, Wilsonart, Studio Teak 7960K-18	Hardwood, HB, Studio Teak Stain	COOPER64, Wood, Studio Teak Stain, Studio Teak Stain



EDGE PROFILES





COOPER TABLES

OCCASIONAL AND LOUNGE

MODEL	BASES		TOP SPECIFICATIONS						OPTIONS	LBS
	Code	Qty.	For Laminate Top			For Veneer Top				
			SE PVF 2MM	HF HB PKNR ¹ PF ¹	HBV HBG	HF2 HKN4	HF HB HBV HBG	HF2 HKN4		
<i>Round</i>										
22D	COOPER61	1	722	1037	1073	1167	1219	1318		45
	COOPER62	1	875	1190	1226	1320	1372	1471		43
	COOPER64	1	953	1268	1304	1398	1450	1549		43
	COOPER67	1	953	1268	1304	1398	1450	1549		43
<i>Square</i>										
18 x 18SQ	COOPER61	1	553	736	769	830	872	1020		40
	COOPER62	1	706	889	922	983	1025	1173		38
	COOPER64	1	785	968	1001	1062	1104	1252		38
	COOPER67	1	785	968	1001	1062	1104	1252		38
24 x 24SQ	COOPER61	1	562	736	769	830	872	1020		47
	COOPER62	1	715	889	922	983	1025	1173		45
	COOPER64	1	794	968	1001	1062	1104	1252		45
	COOPER67	1	794	968	1001	1062	1104	1252		45
30 x 30SQ	COOPER61	1	658	784	830	987	930	1133		57
	COOPER62	1	811	937	983	1140	1083	1286		55
	COOPER64	1	890	1016	1062	1219	1162	1365		55
	COOPER67	1	890	1016	1062	1219	1162	1365		55
36 x 36SQ	COOPER61	1	733	929	982	1168	1174	1351		68
	COOPER62	1	886	1082	1135	1321	1327	1504		66
	COOPER64	1	965	1161	1214	1400	1406	1583		66
	COOPER67	1	965	1161	1214	1400	1406	1583		66
<i>Rectangle</i>										
24 x 48RE	COOPER61	1	708	895	944	1033	1086	1246		64
	COOPER62	1	861	1048	1097	1186	1239	1399		62
	COOPER64	1	940	1127	1176	1265	1318	1478		62
	COOPER67	1	940	1127	1176	1265	1318	1478		62

¹ Exposed Baltic Birch plywood edge (PKNR, PF) can only be specified on square and rectangle tops up to 47-1/2" x 95-1/2". Clear finish only.



STANDARD FEATURES

- Select from 15 standard laminates or choose any standard Wilsonart, Nevamar, Formica, Arborite and Pionite matte finish laminates at no upcharge. For other laminate please contact the factory for pricing.
- 9 standard veneer, table skirts and hardwood edge stains. Stain-to-match available at no upcharge.
- Cooper Dwight table base available in any Spectone color.
- Standard table height 18".
- All bases are standard with floor leveling glides.

OPTIONS

- Custom heights available.

HOW TO ORDER

1. Select Model
2. Select Base
3. Select Edge Style
4. Select Top Finish
5. Select Edge Finish
6. Select Base Finish

Example: 22D - COOPER61 - PVF

