

# COOPER TABLES



## PRODUCT CODE

**2448 RE - COOPER 64**

**Top Size**  
Width x Length or Diameter

**Top Shape**  
D : Round  
SQ : Square  
RE : Rectangle

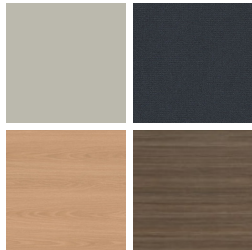
**Collection**  
Cooper

**Series**  
61 : Dwight  
62 : Bala  
64 : Huntsville  
67 : Midland

## FINISHES



### LAMINATE



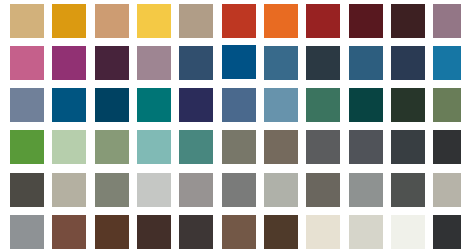
Select from 15 standard laminates or choose any standard Wilsonart, Nevamar, Formica, Arborite and Pionite matte finish laminates at no uncharge

### VENEER



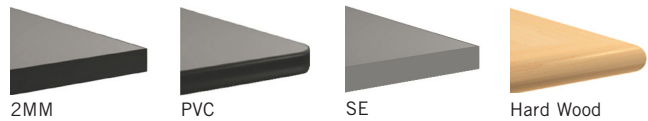
Select from one of our 9 standard wood stains or stain-to-match at no upcharge

### BASE



Select from one of our 76 standard Spectone colors

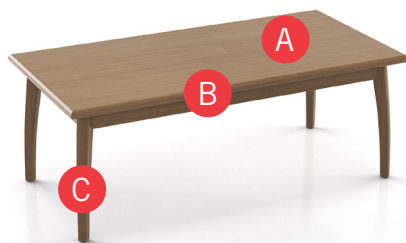
### EDGE



Check out our website for a complete list of edge profiles.

See Spectone Card or [specfurniture.com/materials/finishes](http://specfurniture.com/materials/finishes) for a complete list of finish options and colors.

## HOW TO ORDER



### Specify Top Size (Width x Length) and Shape

- A** Specify Top Type and Finish  
*For Laminate Top: Manufacturer, Laminate Name, Laminate Code*  
*For Veneer Top: Wood Stain*
  - B** Specify Edge Type, (for hardwood: Style), and Finish  
*PVC Flat/2mm Bio/2mm PVC Woodgrain/Self Edge/Hardwood*
  - C** Specify Base Style and Finish  
*For Wood Base: Wood Stain*  
*For Metal Base: RAL Finish*
- Optional: Custom Solutions

Top Size and Shape	Top Type and Finish	Edge Type and Finish	Base Style and Finish
24 x 48, Rectangle	Laminate, Wilsonart, Studio Teak 7960K-18	Hardwood, HB, Studio Teak Stain	COOPER64, Wood, Studio Teak Stain



# COOPER COLLECTION - TABLES

## OCCASIONAL AND LOUNGE

MODEL	BASES		TOP SPECIFICATIONS						OPTIONS	LBS
	Code	Qty.	SE PVF 2MM	For Laminate Top HF HB	HBV HBG	HF2 HKN4	For Veneer Top HF HB HBV HBG	HF2 HKN4		
<i>Round</i>										
<b>22D</b>	<b>COOPER61</b>	1	768	1114	1150	1255	1311	1419		45
	<b>COOPER62</b>	1	931	1277	1313	1418	1474	1582		43
	<b>COOPER64</b>	1	1015	1361	1397	1502	1558	1666		43
	<b>COOPER67</b>	1	1015	1361	1397	1502	1558	1666		43
<i>Square</i>										
<b>18 x 18SQ</b>	<b>COOPER61</b>	1	603	801	837	902	950	1111		40
	<b>COOPER62</b>	1	771	969	1005	1070	1118	1279		38
	<b>COOPER64</b>	1	855	1053	1089	1154	1202	1363		38
	<b>COOPER67</b>	1	855	1053	1089	1154	1202	1363		38
<b>24 x 24SQ</b>	<b>COOPER61</b>	1	614	801	837	902	950	1111		47
	<b>COOPER62</b>	1	782	969	1005	1070	1118	1279		45
	<b>COOPER64</b>	1	866	1053	1089	1154	1202	1363		45
	<b>COOPER67</b>	1	866	1053	1089	1154	1202	1363		45
<b>30 x 30SQ</b>	<b>COOPER61</b>	1	717	853	902	1075	1012	1235		57
	<b>COOPER62</b>	1	885	1021	1070	1243	1180	1403		55
	<b>COOPER64</b>	1	969	1105	1154	1327	1264	1487		55
	<b>COOPER67</b>	1	969	1105	1154	1327	1264	1487		55
<b>36 x 36SQ</b>	<b>COOPER61</b>	1	797	1011	1071	1273	1280	1473		68
	<b>COOPER62</b>	1	965	1179	1239	1441	1448	1641		66
	<b>COOPER64</b>	1	1049	1263	1323	1525	1532	1725		66
	<b>COOPER67</b>	1	1049	1263	1323	1525	1532	1725		66
<i>Rectangle</i>										
<b>24 x 48RE</b>	<b>COOPER61</b>	1	769	975	1029	1126	1185	1359		64
	<b>COOPER62</b>	1	937	1143	1197	1294	1353	1527		62
	<b>COOPER64</b>	1	1021	1227	1281	1378	1437	1611		62
	<b>COOPER67</b>	1	1021	1227	1281	1378	1437	1611		62



### STANDARD FEATURES

- Select from 15 standard laminates or choose any standard Wilsonart, Nevamar, Formica, Arborite and Pionite matte finish laminates at no upcharge. For other laminate please contact the factory for pricing.
- 9 standard veneer and hardwood edge stains. Stain-to-match available at no upcharge.
- Cooper Dwight table base available in any Spectone color.
- Standard table height 18".
- All bases are standard with floor leveling glides.

### OPTIONS

- Custom heights available.

### HOW TO ORDER

1. Select Model
2. Select Base
3. Select Edge Style
4. Select Top Finish
5. Select Edge Finish
6. Select Base Finish

**Example:** 22D - COOPER61 - PVF

