



# DIGNITY2 Behavioral Health Series



PLACING AN ORDER IS EASY

## PRODUCT CODE

**46 0 1 M - N - LL**



## OPTIONS

### ARM TYPE



Polyurethane      Wood      KYDEX®

Corian arms available. Call for pricing.

### WALL SAVING

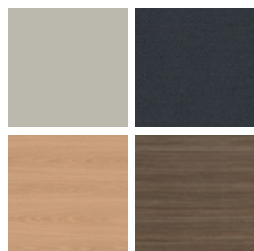


### EXTENDED SIDE PANEL



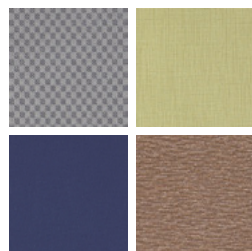
## FINISHES

### ARM PANEL LAMINATE



Select from 15 standard laminates or choose any standard Wilsonart, Nevamar, Formica, Arborite and Pionite matte finish laminates at no upcharge

### FABRIC



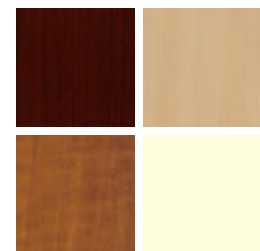
Select fabrics from one of our textile partners

### ARMS



Taupe      Wood\*  
\*Wood arms are available in 9 standard stains or stain-to-match at no upcharge.

### ARM PANEL THERMOFOIL



Select from one of our 8 standard Thermofoil finishes

### FRAME



Select from one of our 76 standard Spectone colors



# DIGNITY2 Behavioral Health Series

For warmth, strength and sustainability  
Single Seater with Arms

## Standard Features

- Separate seat and back
- Arm caps available in wood, or polyurethane
- Laminate or upholstered side panels on inside and outside of arm in various combinations
- Upholstered side panels can match or contrast seat/back
- Select from 15 standard laminates or choose any standard Wilsonart, Nevamar, Formica, Arborite and Pionite matte finish laminates at no upcharge.
- Sculpted steel leg in any Spectone finish
- No protruding legs or hardware
- Tamper proof fastenings
- Non-removable steel levelling glides
- Ships assembled as 1, 2 or 3 seaters
- Ships 1/carton 15 cu ft

## Options

- Polyurethane arm caps available in Black (B) or Taupe RAL 7006 (T) or Sterling Grey (G)
- For wood arm caps, select from 9 standard stains, or stain-to-match at no upcharge
- KYDEX® arm caps available in Black (B) or Taupe RAL 7006 (T) or Sterling Grey (G)
- Thermofoil side panels on inside and outside of arm, call Customer Service for pricing and finishes
- Add up to 20 lbs of additional weight, add \$130 List
- Non-standard laminates, contact Spec for pricing
- Antibacterial and antimicrobial fabrics available
- Floor mounting straps available, call Customer Service
- Connecting and freestanding tables
- CAL 133
- Elimination of separated seat and back available. Contact factory

Contact Spec™ Customer Service to railroad fabrics (specify repeat info and yardage requirement will be provided) and for repeats greater than 5" x 5"



## Single Seater with arms

COM 1.75 yds  
0.75 yd COM per single seat / 1.0 yd COM per single back

MODEL	COM	GR 1	GR 2	GR 3	GR 4	GR 5	GR 6
<b>4601M-LL</b>	<b>1198</b>	<b>1284</b>	<b>1313</b>	<b>1371</b>	<b>1457</b>	<b>1522</b>	<b>1609</b>

Side panel – laminated, outside and inside  
CAL 133, add \$106 List per chair



**4601M**  
95 lbs

COM 2.75 yds  
0.75 yd COM per single seat / 1.0 yd COM per single back / .5 yd COM per panel

MODEL	COM	GR 1	GR 2	GR 3	GR 4	GR 5	GR 6
<b>4601M-LU</b>	<b>1288</b>	<b>1423</b>	<b>1468</b>	<b>1559</b>	<b>1694</b>	<b>1795</b>	<b>1931</b>

Side panel – laminated, outside, upholstered inside  
CAL 133, add \$179 List per chair

COM 2.75 yds  
0.75 yd COM per single seat / 1.0 yd COM per single back / .5 yd COM per panel

MODEL	COM	GR 1	GR 2	GR 3	GR 4	GR 5	GR 6
<b>4601M-UL</b>	<b>1288</b>	<b>1423</b>	<b>1468</b>	<b>1559</b>	<b>1694</b>	<b>1795</b>	<b>1931</b>

Side panel – upholstered outside, laminated inside  
CAL 133, add \$179 List per chair

COM 3.75 yds  
0.75 yd COM per single seat / 1.0 yd COM per single back / 1.0 yd COM per panel

MODEL	COM	GR 1	GR 2	GR 3	GR 4	GR 5	GR 6
<b>4601M-UU</b>	<b>1375</b>	<b>1563</b>	<b>1622</b>	<b>1746</b>	<b>1930</b>	<b>2069</b>	<b>2255</b>

Side panel – upholstered, outside and inside  
CAL 133, add \$256 List per chair

Dimensions (inches)

seat H	18.0	seat W	23.0	arm H	26.0
total H	31.75	total W	28.5	depth	30.0

**For KYDEX® arms add suffix K and \$244**  
**Dynamic load tested to 500 lbs per chair**



# DIGNITY2 Behavioral Health Series

For warmth, strength and sustainability  
Two Seater with Outside Arms

## Standard Features

- Separate seat and back
- Arm caps available in wood, or polyurethane
- Laminate or upholstered side panels on inside and outside of arm in various combinations
- Upholstered side panels can match or contrast seat/back
- Select from 15 standard laminates or choose any standard Wilsonart, Nevamar, Formica, Arborite and Pionite matte finish laminates at no upcharge.
- Sculpted steel leg in any Spectone finish
- No protruding legs or hardware
- Tamper proof fastenings
- Non-removable steel levelling glides
- Ships assembled as 1, 2 or 3 seaters
- Ships 1/carton 15 cu ft

## Options

- Polyurethane arm caps available in Black (B) or Taupe RAL 7006 (T) or Sterling Grey (G)
- For wood arm caps, select from 9 standard stains, or stain-to-match at no upcharge
- KYDEX® arm caps available in Black (B) or Taupe RAL 7006 (T) or Sterling Grey (G)
- Thermofoil side panels on inside and outside of arm, call Customer Service for pricing and finishes
- Add up to 20 lbs of additional weight, add \$130 List
- Non-standard laminates, contact Spec for pricing
- Antibacterial and antimicrobial fabrics available
- Floor mounting straps available, call Customer Service
- Connecting and freestanding tables
- CAL 133
- Elimination of separated seat and back available. Contact factory

Contact Spec Customer Service to railroad fabrics (specify repeat info and yardage requirement will be provided) and for repeats greater than 5" x 5"



## Two Seater with outside arms

COM 3.5 yds  
0.75 yd COM per single seat / 1.0 yd COM per single back

MODEL	COM	GR 1	GR 2	GR 3	GR 4	GR 5	GR 6
<b>4602M-LL</b>	<b>1736</b>	<b>1910</b>	<b>1966</b>	<b>2082</b>	<b>2253</b>	<b>2382</b>	<b>2557</b>

Side panel – laminated, outside and inside  
CAL 133, add \$211 List per two seater

COM 4.5 yds  
0.75 yd COM per single seat / 1.0 yd COM per single back / .5 yd COM per panel

MODEL	COM	GR 1	GR 2	GR 3	GR 4	GR 5	GR 6
<b>4602M-LU</b>	<b>1824</b>	<b>2048</b>	<b>2122</b>	<b>2269</b>	<b>2490</b>	<b>2657</b>	<b>2880</b>

Side panel – laminated, outside, upholstered inside  
CAL 133, add \$285 List per two seater

COM 4.5 yds  
0.75 yd COM per single seat / 1.0 yd COM per single back / .5 yd COM per panel

MODEL	COM	GR 1	GR 2	GR 3	GR 4	GR 5	GR 6
<b>4602M-UL</b>	<b>1824</b>	<b>2048</b>	<b>2122</b>	<b>2269</b>	<b>2490</b>	<b>2657</b>	<b>2880</b>

Side panel – upholstered outside, laminated inside  
CAL 133, add \$285 List per two seater

COM 5.5 yds  
0.75 yd COM per single seat / 1.0 yd COM per single back / 1.0 yd COM per panel

MODEL	COM	GR 1	GR 2	GR 3	GR 4	GR 5	GR 6
<b>4602M-UU</b>	<b>1914</b>	<b>2188</b>	<b>2275</b>	<b>2458</b>	<b>2727</b>	<b>2931</b>	<b>3205</b>

Side panel – upholstered, outside and inside  
CAL 133, add \$363 List per two seater

Dimensions (inches)

seat H	18.0	seat W	45.5	arm H	26.0
total H	31.75	total W	51.0	depth	30.0

For KYDEX® arms add suffix K and \$244  
Dynamic load tested to 750 lbs per two seater



**4602M**  
150 lbs



# DIGNITY2 Behavioral Health Series

For warmth, strength and sustainability  
**Three Seater with Outside Arms**

## Standard Features

- Separate seat and back
- Arm caps available in wood, or polyurethane
- Laminate or upholstered side panels on inside and outside of arm in various combinations
- Upholstered side panels can match or contrast seat/back
- Select from 15 standard laminates or choose any standard Wilsonart, Nevamar, Formica, Arborite and Pionite matte finish laminates at no upcharge.
- Sculpted steel leg in any Spectone finish
- No protruding legs or hardware
- Tamper proof fastenings
- Non-removable steel levelling glides
- Ships assembled as 1, 2 or 3 seaters
- Ships 1/carton 15 cu ft

## Options

- Polyurethane arm caps available in Black (B) or Taupe RAL 7006 (T) or Sterling Grey (G)
- For wood arm caps, select from 9 standard stains, or stain-to-match at no upcharge
- KYDEX® arm caps available in Black (B) or Taupe RAL 7006 (T) or Sterling Grey (G)
- Thermofoil side panels on inside and outside of arm, call Customer Service for pricing and finishes
- Add up to 20 lbs of additional weight, add \$130 List
- Non-standard laminates, contact Spec for pricing
- Antibacterial and antimicrobial fabrics available
- Floor mounting straps available, call Customer Service
- Connecting and freestanding tables
- CAL 133
- Elimination of separated seat and back available. Contact factory

Contact Spec Customer Service to railroad fabrics (specify repeat info and yardage requirement will be provided) and for repeats greater than 5" x 5"



## Three Seater with outside arms

COM 5.25 yds

0.75 yd COM per single seat / 1.0 yd COM per single back

MODEL	COM	GR 1	GR 2	GR 3	GR 4	GR 5	GR 6
<b>4603M-LL</b>	<b>2274</b>	<b>2534</b>	<b>2620</b>	<b>2792</b>	<b>3051</b>	<b>3246</b>	<b>3505</b>

Side panel – laminated, outside and inside

CAL 133, add \$317 List per three seater

COM 6.25 yds

0.75 yd COM per single seat / 1.0 yd COM per single back / .5 yd COM per panel

MODEL	COM	GR 1	GR 2	GR 3	GR 4	GR 5	GR 6
<b>4603M-LU</b>	<b>2363</b>	<b>2674</b>	<b>2776</b>	<b>2982</b>	<b>3288</b>	<b>3518</b>	<b>3829</b>

Side panel – laminated, outside, upholstered inside

CAL 133, add \$391 List per three seater

COM 6.25 yds

0.75 yd COM per single seat / 1.0 yd COM per single back / .5 yd COM per panel

MODEL	COM	GR 1	GR 2	GR 3	GR 4	GR 5	GR 6
<b>4603M-UL</b>	<b>2363</b>	<b>2674</b>	<b>2776</b>	<b>2982</b>	<b>3288</b>	<b>3518</b>	<b>3829</b>

Side panel – upholstered outside, laminated inside

CAL 133, add \$391 List per three seater

COM 7.25 yds

0.75 yd COM per single seat / 1.0 yd COM per single back / 1.0 yd COM per panel

MODEL	COM	GR 1	GR 2	GR 3	GR 4	GR 5	GR 6
<b>4603M-UU</b>	<b>2452</b>	<b>2812</b>	<b>2930</b>	<b>3167</b>	<b>3524</b>	<b>3791</b>	<b>4153</b>

Side panel – upholstered, outside and inside

CAL 133, add \$468 List per three seater

Dimensions (inches)

seat H	18.0	seat W	68.0	arm H	26.0
total H	31.75	total W	74.0	depth	30.0

For KYDEX® arms add suffix K and \$244

Dynamic load tested to 1000 lbs per three seater



**4603M**  
205 lbs



# DIGNITY2 Behavioral Health Series

For warmth, strength and sustainability  
**Bariatric Single Seater with Arms**

## Standard Features

- Separate seat and back
- Arm caps available in wood, or polyurethane
- Laminate or upholstered side panels on inside and outside of arm in various combinations
- Upholstered side panels can match or contrast seat/back
- Select from 15 standard laminates or choose any standard Wilsonart, Nevamar, Formica, Arborite and Pionite matte finish laminates at no upcharge.
- Sculpted steel leg in any Spectone finish
- No protruding legs or hardware
- Tamper proof fastenings
- Non-removable steel levelling glides
- Ships assembled as 1, 2 or 3 seaters
- Ships 1/carton 15 cu ft

## Options

- Polyurethane arm caps available in Black (B) or Taupe RAL 7006 (T) or Sterling Grey (G)
- For wood arm caps, select from 9 standard stains, or stain-to-match at no upcharge
- KYDEX® arm caps available in Black (B) or Taupe RAL 7006 (T) or Sterling Grey (G)
- Thermofoil side panels on inside and outside of arm, call Customer Service for pricing and finishes
- Add up to 20 lbs of additional weight, add \$130 List
- Non-standard laminates, contact Spec for pricing
- Antibacterial and antimicrobial fabrics available
- Floor mounting straps available, call Customer Service
- Connecting and freestanding tables
- CAL 133
- Elimination of separated seat and back available. Contact factory

Contact Spec Customer Service to railroad fabrics (specify repeat info and yardage requirement will be provided) and for repeats greater than 5" x 5"



## Bariatric Single Seater with arms

COM 3.25 yds

1.5 yd COM per single seat / 1.75 yd COM per single back

MODEL	COM	GR 1	GR 2	GR 3	GR 4	GR 5	GR 6
<b>4601G-LL</b>	<b>1486</b>	<b>1648</b>	<b>1701</b>	<b>1808</b>	<b>1967</b>	<b>2088</b>	<b>2250</b>

Side panel – laminated, outside and inside  
 CAL 133, add \$142 List per chair

COM 4.25 yds

1.5 yd COM per single seat / 1.75 yd COM per single back / .5 yd COM per panel

MODEL	COM	GR 1	GR 2	GR 3	GR 4	GR 5	GR 6
<b>4601G-LU</b>	<b>1575</b>	<b>1787</b>	<b>1855</b>	<b>1995</b>	<b>2204</b>	<b>2361</b>	<b>2573</b>

Side panel – laminated, outside, upholstered inside  
 CAL 133, add \$216 List per chair

COM 4.25 yds

1.5 yd COM per single seat / 1.75 yd COM per single back / .5 yd COM per panel

MODEL	COM	GR 1	GR 2	GR 3	GR 4	GR 5	GR 6
<b>4601G-UL</b>	<b>1575</b>	<b>1787</b>	<b>1855</b>	<b>1995</b>	<b>2204</b>	<b>2361</b>	<b>2573</b>

Side panel – upholstered outside, laminated inside  
 CAL 133, add \$216 List per chair

COM 5.25 yds

1.5 yd COM per single seat / 1.75 yd COM per single back / 1.0 yd COM per panel

MODEL	COM	GR 1	GR 2	GR 3	GR 4	GR 5	GR 6
<b>4601G-UU</b>	<b>1666</b>	<b>1926</b>	<b>2012</b>	<b>2185</b>	<b>2443</b>	<b>2636</b>	<b>2896</b>

Side panel – upholstered, outside and inside  
 CAL 133, add \$290 List per chair

Dimensions (inches)

seat H	18.0	seat W	31.0	arm H	26.0
total H	31.75	total W	36.5	depth	30.0

**For KYDEX® arms add suffix K and \$244**  
**Dynamic load tested to 750 lbs per chair**



**4601G**  
113 lbs



# DIGNITY2 Behavioral Health Series

For warmth, strength and sustainability  
Single Seater with No Arms

## Standard Features

- Separate seat and back
- Arm caps available in wood, or polyurethane
- Laminate or upholstered side panels on inside and outside of arm in various combinations
- Upholstered side panels can match or contrast seat/back
- Select from 15 standard laminates or choose any standard Wilsonart, Nevamar, Formica, Arborite and Pionite matte finish laminates at no upcharge.
- Sculpted steel leg in any Spectone finish
- No protruding legs or hardware
- Tamper proof fastenings
- Non-removable steel levelling glides
- Ships assembled as 1, 2 or 3 seaters
- Ships 1/carton 15 cu ft

## Options

- Polyurethane arm caps available in Black (B) or Taupe RAL 7006 (T) or Sterling Grey (G)
- For wood arm caps, select from 9 standard stains, or stain-to-match at no upcharge
- KYDEX® arm caps available in Black (B) or Taupe RAL 7006 (T) or Sterling Grey (G)
- Thermofoil side panels on inside and outside of arm, call Customer Service for pricing and finishes
- Add up to 20 lbs of additional weight, add \$130 List
- Non-standard laminates, contact Spec for pricing
- Antibacterial and antimicrobial fabrics available
- Floor mounting straps available, call Customer Service
- Connecting and freestanding tables
- CAL 133
- Elimination of separated seat and back available. Contact factory

Contact Spec Customer Service to railroad fabrics (specify repeat info and yardage requirement will be provided) and for repeats greater than 5" x 5"



## Single Seater with no arms

COM 1.75 yds

0.75 yd COM per single seat / 1.0 yd COM per single back

MODEL	COM	GR 1	GR 2	GR 3	GR 4	GR 5	GR 6
<b>4601M-LL-N</b>	<b>1176</b>	<b>1264</b>	<b>1292</b>	<b>1349</b>	<b>1436</b>	<b>1502</b>	<b>1587</b>

Side panel – laminated, outside and inside  
CAL 133, add \$106 List per chair



**4601M-N**  
95 lbs

COM 2.75 yds

0.75 yd COM per single seat / 1.0 yd COM per single back / .5 yd COM per panel

MODEL	COM	GR 1	GR 2	GR 3	GR 4	GR 5	GR 6
<b>4601M-LU-N</b>	<b>1266</b>	<b>1402</b>	<b>1447</b>	<b>1538</b>	<b>1673</b>	<b>1774</b>	<b>1910</b>

Side panel – laminated, outside, upholstered inside  
CAL 133, add \$179 List per chair

COM 2.75 yds

0.75 yd COM per single seat / 1.0 yd COM per single back / .5 yd COM per panel

MODEL	COM	GR 1	GR 2	GR 3	GR 4	GR 5	GR 6
<b>4601M-UL-N</b>	<b>1266</b>	<b>1402</b>	<b>1447</b>	<b>1538</b>	<b>1673</b>	<b>1774</b>	<b>1910</b>

Side panel – upholstered outside, laminated inside  
CAL 133, add \$179 List per chair

COM 3.75 yds

0.75 yd COM per single seat / 1.0 yd COM per single back / 1.0 yd COM per panel

MODEL	COM	GR 1	GR 2	GR 3	GR 4	GR 5	GR 6
<b>4601M-UU-N</b>	<b>1353</b>	<b>1541</b>	<b>1601</b>	<b>1724</b>	<b>1909</b>	<b>2048</b>	<b>2234</b>

Side panel – upholstered, outside and inside  
CAL 133, add \$256 List per chair

Dimensions (inches)

seat H	18.0	seat W	23.0	arm H	17.5
total H	31.75	total W	28.5	depth	30.0

**For KYDEX® arms add suffix K and \$244**  
**Dynamic load tested to 500 lbs per chair**



# DIGNITY2 Behavioral Health Series

For warmth, strength and sustainability  
Two Seater with No Arms

## Standard Features

- Separate seat and back
- Arm caps available in wood, or polyurethane
- Laminate or upholstered side panels on inside and outside of arm in various combinations
- Upholstered side panels can match or contrast seat/back
- Select from 15 standard laminates or choose any standard Wilsonart, Nevamar, Formica, Arborite and Pionite matte finish laminates at no upcharge.
- Sculpted steel leg in any Spectone finish
- No protruding legs or hardware
- Tamper proof fastenings
- Non-removable steel levelling glides
- Ships assembled as 1, 2 or 3 seaters
- Ships 1/carton 15 cu ft

## Options

- Polyurethane arm caps available in Black (B) or Taupe RAL 7006 (T) or Sterling Grey (G)
- For wood arm caps, select from 9 standard stains, or stain-to-match at no upcharge
- KYDEX® arm caps available in Black (B) or Taupe RAL 7006 (T) or Sterling Grey (G)
- Thermofoil side panels on inside and outside of arm, call Customer Service for pricing and finishes
- Add up to 20 lbs of additional weight, add \$130 List
- Non-standard laminates, contact Spec for pricing
- Antibacterial and antimicrobial fabrics available
- Floor mounting straps available, call Customer Service
- Connecting and freestanding tables
- CAL 133
- Elimination of separated seat and back available. Contact factory

Contact Spec Customer Service to railroad fabrics (specify repeat info and yardage requirement will be provided) and for repeats greater than 5" x 5"



## Two Seater with no arms

COM 3.5 yds  
0.75 yd COM per single seat / 1.0 yd COM per single back

MODEL	COM	GR 1	GR 2	GR 3	GR 4	GR 5	GR 6
<b>4602M-LL-N</b>	<b>1715</b>	<b>1888</b>	<b>1945</b>	<b>2059</b>	<b>2231</b>	<b>2362</b>	<b>2535</b>

Side panel – laminated, outside and inside  
CAL 133, add \$211 List per two seater

COM 4.5 yds  
0.75 yd COM per single seat / 1.0 yd COM per single back / .5 yd COM per panel

MODEL	COM	GR 1	GR 2	GR 3	GR 4	GR 5	GR 6
<b>4602M-LU-N</b>	<b>1803</b>	<b>2027</b>	<b>2100</b>	<b>2248</b>	<b>2469</b>	<b>2635</b>	<b>2857</b>

Side panel – laminated, outside, upholstered inside  
CAL 133, add \$285 List per two seater

COM 4.5 yds  
0.75 yd COM per single seat / 1.0 yd COM per single back / .5 yd COM per panel

MODEL	COM	GR 1	GR 2	GR 3	GR 4	GR 5	GR 6
<b>4602M-UL-N</b>	<b>1803</b>	<b>2027</b>	<b>2100</b>	<b>2248</b>	<b>2469</b>	<b>2635</b>	<b>2857</b>

Side panel – upholstered outside, laminated inside  
CAL 133, add \$285 List per two seater

COM 5.5 yds  
0.75 yd COM per single seat / 1.0 yd COM per single back / 1.0 yd COM per panel

MODEL	COM	GR 1	GR 2	GR 3	GR 4	GR 5	GR 6
<b>4602M-UU-N</b>	<b>1892</b>	<b>2165</b>	<b>2255</b>	<b>2435</b>	<b>2707</b>	<b>2909</b>	<b>3184</b>

Side panel – upholstered, outside and inside  
CAL 133, add \$363 List per two seater

Dimensions (inches)

seat H	18.0	seat W	45.0	arm H	17.5
total H	31.75	total W	51.0	depth	30.0

For KYDEX® arms add suffix K and \$244  
Dynamic load tested to 750 lbs per two seater



**4602M-N**  
150 lbs





# DIGNITY2 Behavioral Health Series

For warmth, strength and sustainability  
**Three Seater with No Arms**

## Standard Features

- Separate seat and back
- Arm caps available in wood, or polyurethane
- Laminate or upholstered side panels on inside and outside of arm in various combinations
- Upholstered side panels can match or contrast seat/back
- Select from 15 standard laminates or choose any standard Wilsonart, Nevamar, Formica, Arborite and Pionite matte finish laminates at no upcharge.
- Sculpted steel leg in any Spectone finish
- No protruding legs or hardware
- Tamper proof fastenings
- Non-removable steel levelling glides
- Ships assembled as 1, 2 or 3 seaters
- Ships 1/carton 15 cu ft

## Options

- Polyurethane arm caps available in Black (B) or Taupe RAL 7006 (T) or Sterling Grey (G)
- For wood arm caps, select from 9 standard stains, or stain-to-match at no upcharge
- KYDEX® arm caps available in Black (B) or Taupe RAL 7006 (T) or Sterling Grey (G)
- Thermofoil side panels on inside and outside of arm, call Customer Service for pricing and finishes
- Add up to 20 lbs of additional weight, add \$130 List
- Non-standard laminates, contact Spec for pricing
- Antibacterial and antimicrobial fabrics available
- Floor mounting straps available, call Customer Service
- Connecting and freestanding tables
- CAL 133
- Elimination of separated seat and back available. Contact factory

Contact Spec Customer Service to railroad fabrics (specify repeat info and yardage requirement will be provided) and for repeats greater than 5" x 5"



## Three Seater with no arms

COM 5.25 yds

0.75 yd COM per single seat / 1.0 yd COM per single back

MODEL	COM	GR 1	GR 2	GR 3	GR 4	GR 5	GR 6
<b>4603M-LL-N</b>	<b>2254</b>	<b>2513</b>	<b>2599</b>	<b>2772</b>	<b>3030</b>	<b>3223</b>	<b>3483</b>

Side panel – laminated, outside and inside

CAL 133, add \$317 List per three seater

COM 6.25 yds

0.75 yd COM per single seat / 1.0 yd COM per single back / .5 yd COM per panel

MODEL	COM	GR 1	GR 2	GR 3	GR 4	GR 5	GR 6
<b>4603M-LU-N</b>	<b>2342</b>	<b>2653</b>	<b>2753</b>	<b>2959</b>	<b>3266</b>	<b>3497</b>	<b>3807</b>

Side panel – laminated, outside, upholstered inside

CAL 133, add \$391 List per three seater

COM 6.25 yds

0.75 yd COM per single seat / 1.0 yd COM per single back / .5 yd COM per panel

MODEL	COM	GR 1	GR 2	GR 3	GR 4	GR 5	GR 6
<b>4603M-UL-N</b>	<b>2342</b>	<b>2653</b>	<b>2753</b>	<b>2959</b>	<b>3266</b>	<b>3497</b>	<b>3807</b>

Side panel – upholstered outside, laminated inside

CAL 133, add \$391 List per three seater

COM 7.25 yds

0.75 yd COM per single seat / 1.0 yd COM per single back / 1.0 yd COM per panel

MODEL	COM	GR 1	GR 2	GR 3	GR 4	GR 5	GR 6
<b>4603M-UU-N</b>	<b>2430</b>	<b>2790</b>	<b>2908</b>	<b>3147</b>	<b>3502</b>	<b>3770</b>	<b>4131</b>

Side panel – upholstered, outside and inside

CAL 133, add \$468 List per three seater

Dimensions (inches)

seat H	18.0	seat W	68.0	arm H	17.5
total H	31.75	total W	74.0	depth	30.0

**For KYDEX® arms add suffix K and \$244**  
**Dynamic load tested to 1000 lbs per three seater**



**4603M-N**  
205 lbs





# DIGNITY2 Behavioral Health Series

For warmth, strength and sustainability  
**Bariatric Single Seater with No Arms**

### Standard Features

- Separate seat and back
- Arm caps available in wood, or polyurethane
- Laminate or upholstered side panels on inside and outside of arm in various combinations
- Upholstered side panels can match or contrast seat/back
- Select from 15 standard laminates or choose any standard Wilsonart, Nevamar, Formica, Arborite and Pionite matte finish laminates at no upcharge.
- Sculpted steel leg in any Spectone finish
- No protruding legs or hardware
- Tamper proof fastenings
- Non-removable steel levelling glides
- Ships assembled as 1, 2 or 3 seaters
- Ships 1/carton 15 cu ft

### Options

- Polyurethane arm caps available in Black (B) or Taupe RAL 7006 (T) or Sterling Grey (G)
- For wood arm caps, select from 9 standard stains, or stain-to-match at no upcharge
- KYDEX® arm caps available in Black (B) or Taupe RAL 7006 (T) or Sterling Grey (G)
- Thermofoil side panels on inside and outside of arm, call Customer Service for pricing and finishes
- Add up to 20 lbs of additional weight, add \$130 List
- Non-standard laminates, contact Spec for pricing
- Antibacterial and antimicrobial fabrics available
- Floor mounting straps available, call Customer Service
- Connecting and freestanding tables
- CAL 133
- Elimination of separated seat and back available. Contact factory

Contact Spec Customer Service to railroad fabrics (specify repeat info and yardage requirement will be provided) and for repeats greater than 5" x 5"



### Bariatric Single Seater with no arms

COM 3.25 yds

1.5 yd COM per single seat / 1.75 yd COM per single back

MODEL	COM	GR 1	GR 2	GR 3	GR 4	GR 5	GR 6
<b>4601G-LL-N</b>	<b>1465</b>	<b>1626</b>	<b>1679</b>	<b>1786</b>	<b>1946</b>	<b>2066</b>	<b>2228</b>

Side panel – laminated, outside and inside

CAL 133, add \$142 List per chair

COM 4.25 yds

1.5 yd COM per single seat / 1.75 yd COM per single back / .5 yd COM per panel

MODEL	COM	GR 1	GR 2	GR 3	GR 4	GR 5	GR 6
<b>4601G-LU-N</b>	<b>1554</b>	<b>1766</b>	<b>1833</b>	<b>1975</b>	<b>2184</b>	<b>2340</b>	<b>2552</b>

Side panel – laminated, outside, upholstered inside

CAL 133, add \$216 List per chair

COM 4.25 yds

1.5 yd COM per single seat / 1.75 yd COM per single back / .5 yd COM per panel

MODEL	COM	GR 1	GR 2	GR 3	GR 4	GR 5	GR 6
<b>4601G-UL-N</b>	<b>1554</b>	<b>1766</b>	<b>1833</b>	<b>1975</b>	<b>2184</b>	<b>2340</b>	<b>2552</b>

Side panel – upholstered outside, laminated inside

CAL 133, add \$216 List per chair

COM 5.25 yds

1.5 yd COM per single seat / 1.75 yd COM per single back / 1.0 yd COM per panel

MODEL	COM	GR 1	GR 2	GR 3	GR 4	GR 5	GR 6
<b>4601G-UU-N</b>	<b>1644</b>	<b>1904</b>	<b>1990</b>	<b>2162</b>	<b>2421</b>	<b>2615</b>	<b>2876</b>

Side panel – upholstered, outside and inside

CAL 133, add \$290 List per chair

Dimensions (inches)

seat H	18.0	seat W	31.0	arm H	17.5
total H	31.75	total W	36.5	depth	30.0

**For KYDEX® arms add suffix K and \$244**  
**Dynamic load tested to 750 lbs per chair**



**4601G-N**  
113 lbs



# DIGNITY2 Behavioral Health Series

For warmth, strength and sustainability  
Two Seater with Half Arms

## Standard Features

- Separate seat and back
- Arm caps available in wood, or polyurethane
- Laminate or upholstered side panels on inside and outside of arm in various combinations
- Upholstered side panels can match or contrast seat/back
- Select from 15 standard laminates or choose any standard Wilsonart, Nevamar, Formica, Arborite and Pionite matte finish laminates at no upcharge.
- Sculpted steel leg in any Spectone finish
- No protruding legs or hardware
- Tamper proof fastenings
- Non-removable steel levelling glides
- Ships assembled as 1, 2 or 3 seaters
- Ships 1/carton 15 cu ft

## Options

- Polyurethane arm caps available in Black (B) or Taupe RAL 7006 (T) or Sterling Grey (G)
- For wood arm caps, select from 9 standard stains, or stain-to-match at no upcharge
- KYDEX® arm caps available in Black (B) or Taupe RAL 7006 (T) or Sterling Grey (G)
- Thermofoil side panels on inside and outside of arm, call Customer Service for pricing and finishes
- Add up to 20 lbs of additional weight, add \$130 List
- Non-standard laminates, contact Spec for pricing
- Antibacterial and antimicrobial fabrics available
- Floor mounting straps available, call Customer Service
- Connecting and freestanding tables
- CAL 133
- Elimination of separated seat and back available. Contact factory

Contact Spec Customer Service to railroad fabrics (specify repeat info and yardage requirement will be provided) and for repeats greater than 5" x 5"



## Two Seater with half arms

COM 3.5 yds

0.75 yd COM per single seat / 1.0 yd COM per single back

MODEL	COM	GR 1	GR 2	GR 3	GR 4	GR 5	GR 6
<b>4612M-LL</b>	<b>2057</b>	<b>2230</b>	<b>2288</b>	<b>2403</b>	<b>2575</b>	<b>2708</b>	<b>2880</b>

Side panel – laminated, outside and inside

CAL 133, add \$207 List per two seater

COM 5.0 yds

0.75 yd COM per single seat / 1.0 yd COM per single back / .5 yd COM per panel

MODEL	COM	GR 1	GR 2	GR 3	GR 4	GR 5	GR 6
<b>4612M-LU</b>	<b>2145</b>	<b>2393</b>	<b>2472</b>	<b>2638</b>	<b>2885</b>	<b>3071</b>	<b>3319</b>

Side panel – laminated outside, upholstered inside, half arms will be upholstered

CAL 133, add \$317 List per two seater



**4612M**  
150 lbs

COM 4.5 yds

0.75 yd COM per single seat / 1.0 yd COM per single back / .5 yd COM per panel

MODEL	COM	GR 1	GR 2	GR 3	GR 4	GR 5	GR 6
<b>4612M-UL</b>	<b>2145</b>	<b>2393</b>	<b>2472</b>	<b>2638</b>	<b>2885</b>	<b>3071</b>	<b>3319</b>

Side panel – upholstered outside, laminated inside, half arms will be laminated

CAL 133, add \$280 List per two seater

COM 6.0 yds

0.75 yd COM per single seat / 1.0 yd COM per single back / 1.0 yd COM per panel

MODEL	COM	GR 1	GR 2	GR 3	GR 4	GR 5	GR 6
<b>4612M-UU</b>	<b>2236</b>	<b>2531</b>	<b>2628</b>	<b>2827</b>	<b>3122</b>	<b>3348</b>	<b>3643</b>

Side panel – upholstered, outside and inside

CAL 133, add \$391 List per two seater

Dimensions (inches)

seat H	18.0	seat W	48.0	arm H	26.0
total H	31.75	total W	54.0	depth	30.0

**For KYDEX® arms add suffix K and \$366**  
**Dynamic load tested to 750 lbs per two seater**



# DIGNITY2 Behavioral Health Series

For warmth, strength and sustainability  
**Three Seater with Half Arms**

### Standard Features

- Separate seat and back
- Arm caps available in wood, or polyurethane
- Laminate or upholstered side panels on inside and outside of arm in various combinations
- Upholstered side panels can match or contrast seat/back
- Select from 15 standard laminates or choose any standard Wilsonart, Nevamar, Formica, Arborite and Pionite matte finish laminates at no upcharge.
- Sculpted steel leg in any Spectone finish
- No protruding legs or hardware
- Tamper proof fastenings
- Non-removable steel levelling glides
- Ships assembled as 1, 2 or 3 seaters
- Ships 1/carton 15 cu ft

### Options

- Polyurethane arm caps available in Black (B) or Taupe RAL 7006 (T) or Sterling Grey (G)
- For wood arm caps, select from 9 standard stains, or stain-to-match at no upcharge
- KYDEX® arm caps available in Black (B) or Taupe RAL 7006 (T) or Sterling Grey (G)
- Thermofoil side panels on inside and outside of arm, call Customer Service for pricing and finishes
- Add up to 20 lbs of additional weight, add \$130 List
- Non-standard laminates, contact Spec for pricing
- Antibacterial and antimicrobial fabrics available
- Floor mounting straps available, call Customer Service
- Connecting and freestanding tables
- CAL 133
- Elimination of separated seat and back available. Contact factory

Contact Spec Customer Service to railroad fabrics (specify repeat info and yardage requirement will be provided) and for repeats greater than 5" x 5"

---

### Three Seater with half arms

COM 5.25 yds

0.75 yd COM per single seat / 1.0 yd COM per single back

MODEL	COM	GR 1	GR 2	GR 3	GR 4	GR 5	GR 6
<b>4613M-LL</b>	<b>2929</b>	<b>3177</b>	<b>3261</b>	<b>3435</b>	<b>3695</b>	<b>3891</b>	<b>4150</b>

Side panel – laminated, outside and inside  
 CAL 133, add \$311 List per three seater

COM 7.25 yds

0.75 yd COM per single seat / 1.0 yd COM per single back / .5 yd COM per panel

MODEL	COM	GR 1	GR 2	GR 3	GR 4	GR 5	GR 6
<b>4613M-LU</b>	<b>3006</b>	<b>3364</b>	<b>3479</b>	<b>3720</b>	<b>4079</b>	<b>4350</b>	<b>4708</b>

Side panel – laminated outside, upholstered inside, half arms will be upholstered  
 CAL 133, add \$458 List per three seater

COM 6.25 yds

0.75 yd COM per single seat / 1.0 yd COM per single back / .5 yd COM per panel

MODEL	COM	GR 1	GR 2	GR 3	GR 4	GR 5	GR 6
<b>4613M-UL</b>	<b>3006</b>	<b>3364</b>	<b>3479</b>	<b>3720</b>	<b>4079</b>	<b>4350</b>	<b>4708</b>

Side panel – upholstered outside, laminated inside, half arms will be laminated  
 CAL 133, add \$384 List per three seater

COM 8.25 yds

0.75 yd COM per single seat / 1.0 yd COM per single back / 1.0 yd COM per panel

MODEL	COM	GR 1	GR 2	GR 3	GR 4	GR 5	GR 6
<b>4613M-UU</b>	<b>3095</b>	<b>3502</b>	<b>3634</b>	<b>3908</b>	<b>4316</b>	<b>4624</b>	<b>5032</b>

Side panel – upholstered, outside and inside  
 CAL 133, add \$531 List per three seater

Dimensions (inches)

seat H	18.0	seat W	75.0	arm H	26.0
total H	31.75	total W	80.5	depth	30.0

**For KYDEX® arms add suffix K and \$488**  
**Dynamic load tested to 1000 lbs per three seater**



**4613M**  
205 lbs



# DIGNITY2 Behavioral Health Series

For warmth, strength and sustainability

## Side Panel Options

### Standard Features

- Tamper proof fastenings

To order full panel side panels, add ZC-LL, or ZC-U to model number, e.g. 4601M-ZC-LL

To order wall-saving side panels, add WS-LL or WS-U to the model number, e.g. 4601M-WS-U

Pricing is for entire chair (2 end side panels).

Contact Spec Customer Service to railroad fabrics (specify repeat info and yardage requirement will be provided) and for repeats greater than 5" x 5"

### Options

- Thermofoil side panels on inside and outside of arm, call Customer Service for pricing and finishes
- Floor mounting straps available, call Customer Service



## Extended Side Panels

### Laminate Panels Inside & Outside

MODEL	LIST
ZC-LL	69

### Laminate & Upholstered Combination Panels

COM 0.5 yd per panel

MODEL	COM	GR 1	GR 2	GR 3	GR 4	GR 5	GR 6
ZC-LU	69	78	81	88	97	103	112
ZC-UL	69	78	81	88	97	103	112

### Fully Upholstered Panels

COM 1.0 yd per panel

MODEL	COM	GR 1	GR 2	GR 3	GR 4	GR 5	GR 6
ZC-U	69	78	81	88	97	103	112



Side panel extended to floor

## Wall-Saving Side Panels

### Laminate Panels Inside & Outside

MODEL	LIST
WS-LL	109

### Laminate & Upholstered Combination Panels

COM 1.0 yd per panel

MODEL	COM	GR 1	GR 2	GR 3	GR 4	GR 5	GR 6
WS-LU	109	227	255	317	408	478	546
WS-UL	109	227	255	317	408	478	546

### Fully Upholstered Panels

COM 2.0 yd per panel

MODEL	COM	GR 1	GR 2	GR 3	GR 4	GR 5	GR 6
WS-U	109	227	255	317	408	478	546



Wall-saving side panels

# DIGNITY2 Behavioral Health Series

For warmth, strength and sustainability  
Connecting and Freestanding Lounge Tables

## Standard Features

- Tops in laminate or veneer
- Select from 15 standard laminates or choose any standard Wilsonart, Nevamar, Formica, Arborite and Pionite matte finish laminates at no upcharge.
- Laminate tops with PVC Flat (PVF), Self Edge (SE), or hardwood (HB) edge
- 9 standard veneer and hardwood edge stains. Stain-to-match available at no upcharge.
- Heavy duty, fully welded frame is 25% recycled steel
- Tops utilize Nu Green earth friendly core
- 18" height
- Non-removable steel levelling glides

## Options

- Additional weight can be added, contact factory
- Non-standard laminates, contact Spec for pricing
- Floor mounting straps available, call Customer Service

Radius Corner Tables are recommended for open areas



## Freestanding Lounge Tables

Model	Laminate PVF/SE Edge	Laminate HB Edge	Veneer HB Edge	Weight	Cu.Ft.
DIGN2 - 24 x 24 SQ	1030	1191	1221	62	7.2
DIGN2 - 30 x 30 SQ	1157	1273	1316	80	13.5
DIGN2 - 36 x 36 SQ	1263	1445	1494	101	18
DIGN2 - 42 x 42 SQ	1558	1821	1902	124	24.5
DIGN2 - 48 x 48 SQ	1658	1889	1976	151	32
DIGN2 - 24 DIA	1006	1298	1330	49	7.2
DIGN2 - 30 DIA	1128	1418	1457	61	13.5
DIGN2 - 36 DIA	1246	1667	1740	76	18
DIGN2 - 42 DIA	1545	2017	2117	93	24.5
DIGN2 - 48 DIA	1592	2170	2279	111	32



## Corner and Spacer Connecting Tables

Model	Laminate PVF/SE	Laminate HB Edge	Veneer HB Edge	Weight	Cu.Ft.
DIGN2RC - 28 x 28 <i>Radius Corner Table</i>	575	720	891	31	2
DIGN2SC - 28 x 28 <i>Square Corner Table</i>	575	691	826	32	2
DIGN2TC - 45 degree <i>Corner Table</i>	575	720	891	26	2
DIGN2ST - 21 x 24 <i>Spacer Table</i>	441	600	728	27	2



Dignity2 seating is available connected as 1, 2 and 3 seaters, with or without arms between, with corner or spacer tables. Above pricing includes connector bars.

## DIGNITY2 Behavioral Health Series

For warmth, strength and sustainability

### Dolly

#### Standard Features

- Black finish only
- 6" soft wheel casters
- Standard Dolly holds 1 single seat chair
- Ships 1/carton, 17 cu. ft.
- Ships fully assembled



### Dignity2 - Dolly

Description	Model	Price	Weight
Single Seat Dolly	<b>DIGN-99</b>	<b>467</b>	12lb

#### Dimensions (inches)

height	39.0
width	23.0
depth	30.0

