

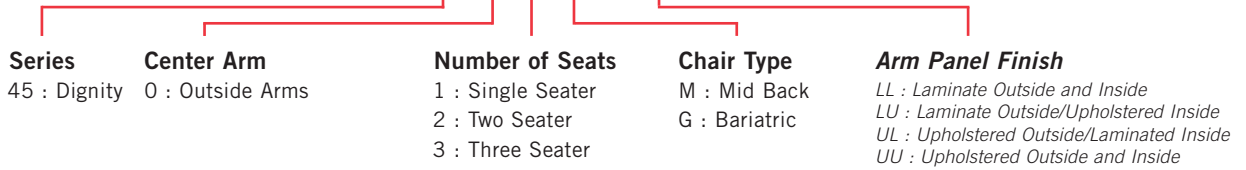


# DIGNITY Behavioral Health Series



## PRODUCT CODE

**45 0 1 M - LL**



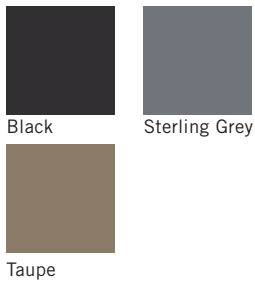
## OPTIONS

### SEAT PAN

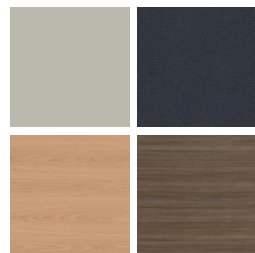


## FINISHES

### FRAME / ARMS

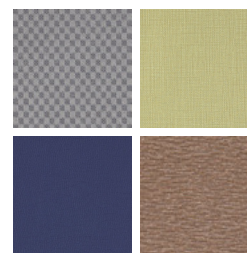


### LAMINATE



Select from 15 standard laminates or choose any standard Wilsonart, Nevamar, Formica, Arborite and Pionite matte finish laminates at no upcharge

### FABRIC

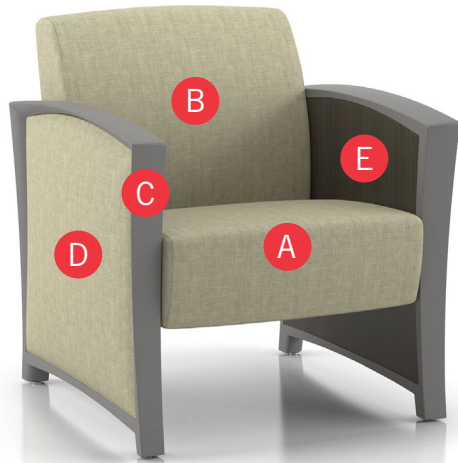


Select fabrics from one of our textile partners

See Spectone Card or [specfurniture.com/materials/finishes](http://specfurniture.com/materials/finishes) for a complete list of finish options and colors.

# DIGNITY Behavioral Health Series

## HOW TO ORDER



### Specify Model

- A** Specify Fabric - Seat<sup>1</sup>  
*Manufacturer, Pattern Name, Color*
- B** Specify Fabric - Back<sup>1</sup>  
*Manufacturer, Pattern Name, Color*
- C** Specify Frame Finish
- D** Specify Outside/Inside Panel Finish
- E** *For Laminate Panels: Manufacturer, Laminate Name, Laminate Code*  
*For Fabric Panels: Manufacturer, Pattern Name, Color*

Optional: Additional Weight, Floor Mounting Straps, Elimination of Separated Seat and Back, CAL 133, Moisture Barrier, Connecting and Freestanding Tables, Dolly

<sup>1</sup> When multiple fabrics are specified on two and three seat chairs, please provide a drawing and legend for fabric placement.

Model	Fabric - Seat	Fabric - Back	Frame Finish	Outside Panel	Inside Panel
4501M-UL	Momentum, Beeline, Eucaliptus	Momentum, Beeline, Eucaliptus	Sterling Grey	Momentum, Beeline, Eucaliptus	Wilsonart, Asian Night, 7949K-18





# DIGNITY Behavioral Health Series

## Standard Features

- Separate seat and back
- Self-skinned polyurethane perimeter arms
- Upholstered side panels can match or contrast seat/back
- Laminate or upholstered side panels on inside and outside of arm
- Select from 15 standard laminates or choose any standard Wilsonart, Nevamar, Formica, Arborite and Pionite matte finish laminates at no upcharge.
- No protruding legs or hardware
- Tamper proof fastenings
- Non-removable steel levelling glides
- Ships assembled
- Ships 1/carton 15 cu ft

Contact Spec Customer Service to railroad fabrics (specify repeat info and yardage requirement will be provided) and for repeats greater than 5" x 5"

## Options

- Specify frame finish, Black (B), Sterling Grey (G) or Taupe RAL 7006 (T)
- Add up to 20 lbs of additional weight per seat, add \$135 List per seat
- Non-standard laminates, contact Spec for pricing
- Antibacterial and antimicrobial fabrics available
- Floor mounting straps available, call Customer Service
- Connecting and freestanding tables
- CAL 133
- Elimination of separated seat and back available with either solid or perforated seat pan, call Customer Service



## Single Seater with arms

COM 1.75 yds

0.75 yd COM per single seat / 1.0 yd COM per single back

MODEL	COM	GR 1	GR 2	GR 3	GR 4	GR 5	GR 6
<b>4501M-LL</b>	<b>1246</b>	<b>1335</b>	<b>1366</b>	<b>1426</b>	<b>1515</b>	<b>1583</b>	<b>1673</b>

Arm panel – laminated, outside and inside

CAL 133, add \$110 List per chair

COM 2.75 yds

0.75 yd COM per single seat / 1.0 yd COM per single back / .5 yd COM per panel

MODEL	COM	GR 1	GR 2	GR 3	GR 4	GR 5	GR 6
<b>4501M-LU</b>	<b>1340</b>	<b>1480</b>	<b>1527</b>	<b>1621</b>	<b>1762</b>	<b>1867</b>	<b>2008</b>

Arm panel – laminated, outside, upholstered inside

CAL 133, add \$186 List per chair

COM 2.75 yds

0.75 yd COM per single seat / 1.0 yd COM per single back / .5 yd COM per panel

MODEL	COM	GR 1	GR 2	GR 3	GR 4	GR 5	GR 6
<b>4501M-UL</b>	<b>1340</b>	<b>1480</b>	<b>1527</b>	<b>1621</b>	<b>1762</b>	<b>1867</b>	<b>2008</b>

Arm panel – upholstered outside, laminated inside

CAL 133, add \$186 List per chair

COM 3.75 yds

0.75 yd COM per single seat / 1.0 yd COM per single back / 1.0 yd COM per panel

MODEL	COM	GR 1	GR 2	GR 3	GR 4	GR 5	GR 6
<b>4501M-UU</b>	<b>1430</b>	<b>1626</b>	<b>1687</b>	<b>1816</b>	<b>2007</b>	<b>2152</b>	<b>2345</b>

Arm panel – upholstered, outside and inside

CAL 133, add \$266 List per chair

Dimensions (inches)

seat H	18.0	seat W	23.0	arm H	25.25
total H	32.75	total W	29.0	depth	29.75

Exceeds BIFMA Seating Durability Test to 500 lbs per chair



**4501M**  
95 lbs



# DIGNITY Behavioral Health Series

## Standard Features

- Separate seat and back
- Self-skinned polyurethane perimeter arms
- Upholstered side panels can match or contrast seat/back
- Laminate or upholstered side panels on inside and outside of arm
- Select from 15 standard laminates or choose any standard Wilsonart, Nevamar, Formica, Arborite and Pionite matte finish laminates at no upcharge.
- No protruding legs or hardware
- Tamper proof fastenings
- Non-removable steel levelling glides
- Ships assembled
- Ships 1/carton 26 cu ft

Contact Spec Customer Service to railroad fabrics (specify repeat info and yardage requirement will be provided) and for repeats greater than 5" x 5"

## Options

- Specify frame finish, Black (B), Sterling Grey (G) or Taupe RAL 7006 (T)
- Add up to 20 lbs of additional weight per seat, add \$135 List per seat
- Non-standard laminates, contact Spec for pricing
- Antibacterial and antimicrobial fabrics available
- Floor mounting straps available, call Customer Service
- Connecting and freestanding tables
- CAL 133
- Elimination of separated seat and back available with either solid or perforated seat pan, call Customer Service



## Two Seater with outside arms

COM 3.5 yds

0.75 yd COM per single seat / 1.0 yd COM per single back

MODEL	COM	GR 1	GR 2	GR 3	GR 4	GR 5	GR 6
<b>4502M-LL</b>	<b>1805</b>	<b>1986</b>	<b>2045</b>	<b>2165</b>	<b>2343</b>	<b>2477</b>	<b>2659</b>

Arm panel – laminated, outside and inside

CAL 133, add \$220 List per two seater

COM 4.5 yds

0.75 yd COM per single seat / 1.0 yd COM per single back / .5 yd COM per panel

MODEL	COM	GR 1	GR 2	GR 3	GR 4	GR 5	GR 6
<b>4502M-LU</b>	<b>1897</b>	<b>2130</b>	<b>2207</b>	<b>2360</b>	<b>2590</b>	<b>2763</b>	<b>2995</b>

Arm panel – laminated, outside, upholstered inside

CAL 133, add \$296 List per two seater

COM 4.5 yds

0.75 yd COM per single seat / 1.0 yd COM per single back / .5 yd COM per panel

MODEL	COM	GR 1	GR 2	GR 3	GR 4	GR 5	GR 6
<b>4502M-UL</b>	<b>1897</b>	<b>2130</b>	<b>2207</b>	<b>2360</b>	<b>2590</b>	<b>2763</b>	<b>2995</b>

Arm panel – upholstered outside, laminated inside

CAL 133, add \$296 List per two seater

COM 5.5 yds

0.75 yd COM per single seat / 1.0 yd COM per single back / 1.0 yd COM per panel

MODEL	COM	GR 1	GR 2	GR 3	GR 4	GR 5	GR 6
<b>4502M-UU</b>	<b>1991</b>	<b>2276</b>	<b>2366</b>	<b>2556</b>	<b>2836</b>	<b>3048</b>	<b>3333</b>

Arm panel – upholstered, outside and inside

CAL 133, add \$372 List per two seater

Dimensions (inches)

seat H	18.0	seat W	46.0	arm H	25.25
total H	32.75	total W	52.0	depth	29.75

Exceeds BIFMA Seating Durability Test to 750 lbs per two seater



**4502M**  
150 lbs



# DIGNITY Behavioral Health Series

## Standard Features

- Separate seat and back
- Self-skinned polyurethane perimeter arms
- Upholstered side panels can match or contrast seat/back
- Laminate or upholstered side panels on inside and outside of arm
- Select from 15 standard laminates or choose any standard Wilsonart, Nevamar, Formica, Arborite and Pionite matte finish laminates at no upcharge.
- No protruding legs or hardware
- Tamper proof fastenings
- Non-removable steel levelling glides
- Ships assembled
- Ships 1/carton 39 cu ft

Contact Spec Customer Service to railroad fabrics (specify repeat info and yardage requirement will be provided) and for repeats greater than 5" x 5"

## Options

- Specify frame finish, Black (B), Sterling Grey (G) or Taupe RAL 7006 (T)
- Add up to 20 lbs of additional weight per seat, add \$135 List per seat
- Non-standard laminates, contact Spec for pricing
- Antibacterial and antimicrobial fabrics available
- Floor mounting straps available, call Customer Service
- Connecting and freestanding tables
- CAL 133
- Elimination of separated seat and back available with either solid or perforated seat pan, call Customer Service



## Three Seater with outside arms

COM 5.25 yds

0.75 yd COM per single seat / 1.0 yd COM per single back

MODEL	COM	GR 1	GR 2	GR 3	GR 4	GR 5	GR 6
<b>4503M-LL</b>	<b>2365</b>	<b>2635</b>	<b>2725</b>	<b>2904</b>	<b>3173</b>	<b>3376</b>	<b>3645</b>

Arm panel – laminated, outside and inside

CAL 133, add \$330 List per three seater

COM 6.25 yds

0.75 yd COM per single seat / 1.0 yd COM per single back / .5 yd COM per panel

MODEL	COM	GR 1	GR 2	GR 3	GR 4	GR 5	GR 6
<b>4503M-LU</b>	<b>2458</b>	<b>2781</b>	<b>2887</b>	<b>3101</b>	<b>3420</b>	<b>3659</b>	<b>3982</b>

Arm panel – laminated, outside, upholstered inside

CAL 133, add \$406 List per three seater

COM 6.25 yds

0.75 yd COM per single seat / 1.0 yd COM per single back / .5 yd COM per panel

MODEL	COM	GR 1	GR 2	GR 3	GR 4	GR 5	GR 6
<b>4503M-UL</b>	<b>2458</b>	<b>2781</b>	<b>2887</b>	<b>3101</b>	<b>3420</b>	<b>3659</b>	<b>3982</b>

Arm panel – upholstered outside, laminated inside

CAL 133, add \$406 List per three seater

COM 7.25 yds

0.75 yd COM per single seat / 1.0 yd COM per single back / 1.0 yd COM per panel

MODEL	COM	GR 1	GR 2	GR 3	GR 4	GR 5	GR 6
<b>4503M-UU</b>	<b>2550</b>	<b>2924</b>	<b>3047</b>	<b>3294</b>	<b>3665</b>	<b>3943</b>	<b>4319</b>

Arm panel – upholstered, outside and inside

CAL 133, add \$482 List per three seater

Dimensions (inches)

seat H	18.0	seat W	69.0	arm H	25.25
total H	32.75	total W	75.0	depth	29.75

Exceeds BIFMA Seating Durability Test to 1000 lbs per three seater



**4503M**  
205 lbs



# DIGNITY Behavioral Health Series

## Standard Features

- Separate seat and back
- Self-skinned polyurethane perimeter arms
- Upholstered side panels can match or contrast seat/back
- Laminate or upholstered side panels on inside and outside of arm
- Select from 15 standard laminates or choose any standard Wilsonart, Nevamar, Formica, Arborite and Pionite matte finish laminates at no upcharge.
- No protruding legs or hardware
- Tamper proof fastenings
- Non-removable steel levelling glides
- Ships assembled
- Ships 1/carton 20 cu ft

Contact Spec Customer Service to railroad fabrics (specify repeat info and yardage requirement will be provided) and for repeats greater than 5" x 5"

## Options

- Specify frame finish, Black (B), Sterling Grey (G) or Taupe RAL 7006 (T)
- Add up to 20 lbs of additional weight per seat, add \$135 List per seat
- Non-standard laminates, contact Spec for pricing
- Antibacterial and antimicrobial fabrics available
- Floor mounting straps available, call Customer Service
- Connecting and freestanding tables
- CAL 133
- Elimination of separated seat and back available with either solid or perforated seat pan, call Customer Service



## Bariatric Single Seater with arms

COM 3.25 yds

1.5 yd COM per single seat / 1.75 yd COM per single back

MODEL	COM	GR 1	GR 2	GR 3	GR 4	GR 5	GR 6
<b>4501G-LL</b>	<b>1545</b>	<b>1714</b>	<b>1769</b>	<b>1880</b>	<b>2046</b>	<b>2172</b>	<b>2340</b>

Arm panel – laminated, outside and inside

CAL 133, add \$148 List per chair

COM 4.25 yds

1.5 yd COM per single seat / 1.75 yd COM per single back / .5 yd COM per panel

MODEL	COM	GR 1	GR 2	GR 3	GR 4	GR 5	GR 6
<b>4501G-LU</b>	<b>1638</b>	<b>1858</b>	<b>1929</b>	<b>2075</b>	<b>2292</b>	<b>2455</b>	<b>2676</b>

Arm panel – laminated, outside, upholstered inside

CAL 133, add \$224 List per chair

COM 4.25 yds

1.5 yd COM per single seat / 1.75 yd COM per single back / .5 yd COM per panel

MODEL	COM	GR 1	GR 2	GR 3	GR 4	GR 5	GR 6
<b>4501G-UL</b>	<b>1638</b>	<b>1858</b>	<b>1929</b>	<b>2075</b>	<b>2292</b>	<b>2455</b>	<b>2676</b>

Arm panel – upholstered outside, laminated inside

CAL 133, add \$224 List per chair

COM 5.25 yds

1.5 yd COM per single seat / 1.75 yd COM per single back / 1.0 yd COM per panel

MODEL	COM	GR 1	GR 2	GR 3	GR 4	GR 5	GR 6
<b>4501G-UU</b>	<b>1733</b>	<b>2003</b>	<b>2092</b>	<b>2272</b>	<b>2541</b>	<b>2741</b>	<b>3012</b>

Arm panel – upholstered, outside and inside

CAL 133, add \$300 List per chair

Dimensions (inches)

seat H	18.0	seat W	30.25	arm H	25.25
total H	32.75	total W	36.25	depth	29.75

Exceeds BIFMA Seating Durability Test to 750 lbs per chair



**4501G**  
113 lbs

# DIGNITY Behavioral Health Series

## Standard Features

- Tops in laminate or veneer
- Select from 15 standard laminates or choose any standard Wilsonart, Nevamar, Formica, Arborite and Pionite matte finish laminates at no upcharge.
- Laminate tops with PVC Flat (PVF), Self Edge (SE), or hardwood (HB) edge
- 9 standard veneer and hardwood edge stains. Stain-to-match available at no upcharge.
- Tops utilize NU Green earth friendly core
- 18" height
- Non-removable steel levelling glides

## Options

- Specify frame finish, Black (B), Sterling Grey (G) or Taupe RAL 7006 (T)
- Additional weight can be added, contact factory
- Non-standard laminates, contact Spec for pricing
- Floor mounting straps available, call Customer Service

*Radius Corner Tables are recommended for open areas*



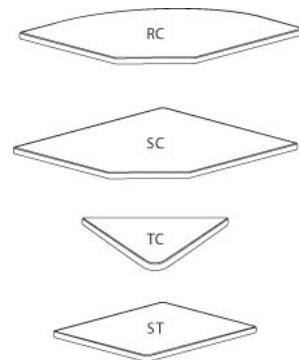
## Freestanding Lounge Tables

Model	Laminate PVF/SE Edge	Laminate HB Edge	Veneer HB Edge	Weight	Cu.Ft.
DIGN - 24 x 24 SQ	<b>1071</b>	<b>1239</b>	<b>1270</b>	57	7.2
DIGN - 30 x 30 SQ	<b>1203</b>	<b>1324</b>	<b>1369</b>	74	13.5
DIGN - 36 x 36 SQ	<b>1314</b>	<b>1503</b>	<b>1554</b>	94	18
DIGN - 42 x 42 SQ	<b>1620</b>	<b>1894</b>	<b>1978</b>	116	24.5
DIGN - 48 x 48 SQ	<b>1724</b>	<b>1965</b>	<b>2055</b>	141	32
DIGN - 24 DIA	<b>1046</b>	<b>1350</b>	<b>1383</b>	45	7.2
DIGN - 30 DIA	<b>1173</b>	<b>1475</b>	<b>1515</b>	57	13.5
DIGN - 36 DIA	<b>1296</b>	<b>1734</b>	<b>1810</b>	71	18
DIGN - 42 DIA	<b>1607</b>	<b>2098</b>	<b>2202</b>	87	24.5
DIGN - 48 DIA	<b>1602</b>	<b>2257</b>	<b>2370</b>	104	32



## Corner and Spacer Connecting Tables

Model	Laminate PVF/SE	Laminate HB Edge	Veneer HB Edge	Weight	Cu.Ft.
DIGNRC - 28 x 28 <i>Radius Corner Table</i>	<b>598</b>	<b>749</b>	<b>927</b>	<b>31</b>	<b>2</b>
DIGNSC - 28 x 28 <i>Square Corner Table</i>	<b>598</b>	<b>719</b>	<b>859</b>	<b>32</b>	<b>2</b>
DIGNTC - 45 degree <i>Corner Table</i>	<b>598</b>	<b>749</b>	<b>927</b>	<b>26</b>	<b>2</b>
DIGNST - 21 x 24 <i>Spacer Table</i>	<b>459</b>	<b>624</b>	<b>757</b>	<b>27</b>	<b>2</b>



## DIGNITY Behavioral Health Series

### Standard Features

- Black finish only
- 6" soft wheel casters
- Standard Dolly holds 1 single seat chair
- Ships 1/carton, 17 cu. ft.
- Ships assembled



### Dignity - Dolly

Description	Model	Price	Weight
Single Seat Dolly	<b>DIGN-99</b>	<b>486</b>	<b>12lb</b>

Dimensions (inches)

height	39.0
width	23.0
depth	30.0

