



Pricing March 1, 2020  
Discount 57.7% from List prices



MAS SIN 33721

# DIGNITY Behavioral Health Series



## PRODUCT CODE

**4501M - UU**

**Series**

45 : Dignity

**Center Arm**

0 : Outside Arms

**Number of Seats**

1 : Single Seater  
2 : Two Seater  
3 : Three Seater

**Chair Type**

M : Mid Back  
G : Bariatric

**Arm Panel Finish**

LL : Laminate Outside and Inside  
LU : Laminate Outside/Upholstered Inside  
UL : Upholstered Outside/Laminated Inside  
UU : Upholstered Outside and Inside

## OPTIONS

### SEAT PAN



## FINISHES

### FRAME / ARMS



Black

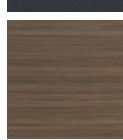
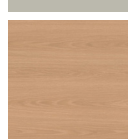
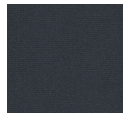


Sterling Grey



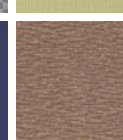
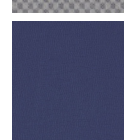
Taupe

### LAMINATE



Select from 15 standard laminates or choose any standard Wilsonart, Nevamar, Formica, Arborite and Pionite matte finish laminates at no upcharge

### FABRIC



Select fabrics from one of our textile partners

See Spectone Card or [specfurniture.com/materials/finishes](http://specfurniture.com/materials/finishes) for a complete list of finish options and colors.



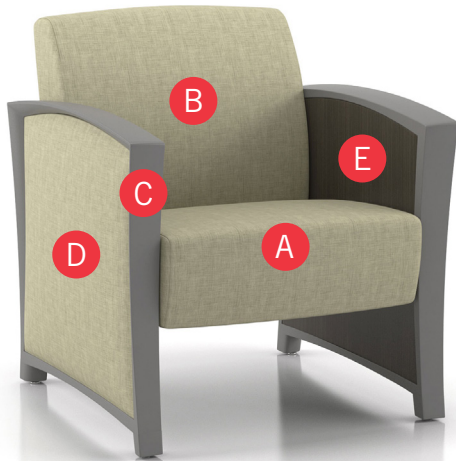
Pricing March 1, 2020  
Discount 57.7% from List prices



MAS SIN 33721

## DIGNITY Behavioral Health Series

### HOW TO ORDER



#### Specify Model

- A** Specify Fabric - Seat<sup>1</sup>  
*Manufacturer, Pattern Name, Color*
- B** Specify Fabric - Back<sup>1</sup>  
*Manufacturer, Pattern Name, Color*
- C** Specify Frame Finish
- D** Specify Outside/Inside Panel Finish
- E** *For Laminate Panels: Manufacturer, Laminate Name, Laminate Code*  
*For Fabric Panels: Manufacturer, Pattern Name, Color*

Optional: Additional Weight, Floor Mounting Straps, Elimination of Separated Seat and Back, CAL 133, Moisture Barrier, Connecting and Freestanding Tables, Dolly

<sup>1</sup> When multiple fabrics are specified on two and three seat chairs, please provide a drawing and legend for fabric placement.

Model	Fabric - Seat	Fabric - Back	Frame Finish	Outside Panel	Inside Panel
4501M-UL	Momentum, Beeline, Eucaliptus	Momentum, Beeline, Eucaliptus	Sterling Grey	Momentum, Beeline, Eucaliptus	Wilsonart, Asian Night, 7949K-18





# DIGNITY Behavioral Health Series

## Standard Features

- Separate seat and back
- Self-skinned polyurethane perimeter arms
- Upholstered side panels can match or contrast seat/back
- Laminate or upholstered side panels on inside and outside of arm
- Select from 15 standard laminates or choose any standard Wilsonart, Nevamar, Formica, Arborite and Pionite matte finish laminates at no upcharge.
- No protruding legs or hardware
- Tamper proof fastenings
- Non-removable steel levelling glides
- Ships assembled
- Ships 1/carton 15 cu ft

Contact Spec Customer Service to railroad fabrics (specify repeat info and yardage requirement will be provided) and for repeats greater than 5" x 5"

## Options

- Specify frame finish, Black (B), Sterling Grey (G) or Taupe RAL 7006 (T)
- Add up to 20 lbs of additional weight per seat, add \$162 List per seat
- Non-standard laminates, contact Spec for pricing
- Antibacterial and antimicrobial fabrics available
- Floor mounting straps available, call Customer Service
- Connecting and freestanding tables
- CAL 133
- Elimination of separated seat and back available with either solid or perforated seat pan, call Customer Service



## Single Seater with arms

COM 1.75 yds

0.75 yd COM per single seat / 1.0 yd COM per single back

MODEL	COM	GR 1	GR 2	GR 3	GR 4	GR 5	GR 6
<b>4501M-LL</b>	<b>1474</b>	<b>1567</b>	<b>1597</b>	<b>1658</b>	<b>1749</b>	<b>1819</b>	<b>1909</b>

Arm panel – laminated, outside and inside

CAL 133, add \$120 List per chair



**4501M**  
107 lbs

COM 2.75 yds

0.75 yd COM per single seat / 1.0 yd COM per single back / .5 yd COM per panel

MODEL	COM	GR 1	GR 2	GR 3	GR 4	GR 5	GR 6
<b>4501M-LU</b>	<b>1591</b>	<b>1736</b>	<b>1783</b>	<b>1879</b>	<b>2023</b>	<b>2129</b>	<b>2274</b>

Arm panel – laminated, outside, upholstered inside

CAL 133, add \$204 List per chair

COM 2.75 yds

0.75 yd COM per single seat / 1.0 yd COM per single back / .5 yd COM per panel

MODEL	COM	GR 1	GR 2	GR 3	GR 4	GR 5	GR 6
<b>4501M-UL</b>	<b>1591</b>	<b>1736</b>	<b>1783</b>	<b>1879</b>	<b>2023</b>	<b>2129</b>	<b>2274</b>

Arm panel – upholstered outside, laminated inside

CAL 133, add \$204 List per chair

COM 3.75 yds

0.75 yd COM per single seat / 1.0 yd COM per single back / 1.0 yd COM per panel

MODEL	COM	GR 1	GR 2	GR 3	GR 4	GR 5	GR 6
<b>4501M-UU</b>	<b>1707</b>	<b>1904</b>	<b>1968</b>	<b>2100</b>	<b>2293</b>	<b>2442</b>	<b>2637</b>

Arm panel – upholstered, outside and inside

CAL 133, add \$284 List per chair

Dimensions (inches)

seat H	18.0	seat W	23.0	arm H	25.25
total H	32.75	total W	29.0	depth	29.75

Exceeds BIFMA Seating Durability Test to 500 lbs per chair



## DIGNITY Behavioral Health Series

### Standard Features

- Separate seat and back
- Self-skinned polyurethane perimeter arms
- Upholstered side panels can match or contrast seat/back
- Laminate or upholstered side panels on inside and outside of arm
- Select from 15 standard laminates or choose any standard Wilsonart, Nevamar, Formica, Arborite and Pionite matte finish laminates at no upcharge.
- No protruding legs or hardware
- Tamper proof fastenings
- Non-removable steel levelling glides
- Ships assembled
- Ships 1/carton 26 cu ft

Contact Spec Customer Service to railroad fabrics (specify repeat info and yardage requirement will be provided) and for repeats greater than 5" x 5"

### Options

- Specify frame finish, Black (B), Sterling Grey (G) or Taupe RAL 7006 (T)
- Add up to 20 lbs of additional weight per seat, add \$162 List per seat
- Non-standard laminates, contact Spec for pricing
- Antibacterial and antimicrobial fabrics available
- Floor mounting straps available, call Customer Service
- Connecting and freestanding tables
- CAL 133
- Elimination of separated seat and back available with either solid or perforated seat pan, call Customer Service



### Two Seater with outside arms

COM 3.5 yds

0.75 yd COM per single seat / 1.0 yd COM per single back

MODEL	COM	GR 1	GR 2	GR 3	GR 4	GR 5	GR 6
<b>4502M-LL</b>	<b>2166</b>	<b>2349</b>	<b>2409</b>	<b>2531</b>	<b>2714</b>	<b>2851</b>	<b>3035</b>

Arm panel – laminated, outside and inside

CAL 133, add \$240 List per two seater

COM 4.5 yds

0.75 yd COM per single seat / 1.0 yd COM per single back / .5 yd COM per panel

MODEL	COM	GR 1	GR 2	GR 3	GR 4	GR 5	GR 6
<b>4502M-LU</b>	<b>2282</b>	<b>2518</b>	<b>2597</b>	<b>2751</b>	<b>2988</b>	<b>3165</b>	<b>3399</b>

Arm panel – laminated, outside, upholstered inside

CAL 133, add \$324 List per two seater

COM 4.5 yds

0.75 yd COM per single seat / 1.0 yd COM per single back / .5 yd COM per panel

MODEL	COM	GR 1	GR 2	GR 3	GR 4	GR 5	GR 6
<b>4502M-UL</b>	<b>2282</b>	<b>2518</b>	<b>2597</b>	<b>2751</b>	<b>2988</b>	<b>3165</b>	<b>3399</b>

Arm panel – upholstered outside, laminated inside

CAL 133, add \$324 List per two seater

COM 5.5 yds

0.75 yd COM per single seat / 1.0 yd COM per single back / 1.0 yd COM per panel

MODEL	COM	GR 1	GR 2	GR 3	GR 4	GR 5	GR 6
<b>4502M-UU</b>	<b>2397</b>	<b>2686</b>	<b>2781</b>	<b>2972</b>	<b>3258</b>	<b>3475</b>	<b>3766</b>

Arm panel – upholstered, outside and inside

CAL 133, add \$408 List per two seater

Dimensions (inches)

seat H	18.0	seat W	46.0	arm H	25.25
total H	32.75	total W	52.0	depth	29.75

Exceeds BIFMA Seating Durability Test to 750 lbs per two seater



**4502M**  
152 lbs



## DIGNITY Behavioral Health Series

### Standard Features

- Separate seat and back
- Self-skinned polyurethane perimeter arms
- Upholstered side panels can match or contrast seat/back
- Laminate or upholstered side panels on inside and outside of arm
- Select from 15 standard laminates or choose any standard Wilsonart, Nevamar, Formica, Arborite and Pionite matte finish laminates at no upcharge.
- No protruding legs or hardware
- Tamper proof fastenings
- Non-removable steel levelling glides
- Ships assembled
- Ships 1/carton 39 cu ft

Contact Spec Customer Service to railroad fabrics (specify repeat info and yardage requirement will be provided) and for repeats greater than 5" x 5"

### Options

- Specify frame finish, Black (B), Sterling Grey (G) or Taupe RAL 7006 (T)
- Add up to 20 lbs of additional weight per seat, add \$162 List per seat
- Non-standard laminates, contact Spec for pricing
- Antibacterial and antimicrobial fabrics available
- Floor mounting straps available, call Customer Service
- Connecting and freestanding tables
- CAL 133
- Elimination of separated seat and back available with either solid or perforated seat pan, call Customer Service



### Three Seater with outside arms

COM 5.25 yds

0.75 yd COM per single seat / 1.0 yd COM per single back

MODEL	COM	GR 1	GR 2	GR 3	GR 4	GR 5	GR 6
<b>4503M-LL</b>	<b>2856</b>	<b>3132</b>	<b>3224</b>	<b>3406</b>	<b>3680</b>	<b>3886</b>	<b>4162</b>

Arm panel – laminated, outside and inside

CAL 133, add \$360 List per three seater



**4503M**  
197 lbs

COM 6.25 yds

0.75 yd COM per single seat / 1.0 yd COM per single back / .5 yd COM per panel

MODEL	COM	GR 1	GR 2	GR 3	GR 4	GR 5	GR 6
<b>4503M-LU</b>	<b>2971</b>	<b>3300</b>	<b>3408</b>	<b>3628</b>	<b>3953</b>	<b>4197</b>	<b>4526</b>

Arm panel – laminated, outside, upholstered inside

CAL 133, add \$444 List per three seater

COM 6.25 yds

0.75 yd COM per single seat / 1.0 yd COM per single back / .5 yd COM per panel

MODEL	COM	GR 1	GR 2	GR 3	GR 4	GR 5	GR 6
<b>4503M-UL</b>	<b>2971</b>	<b>3300</b>	<b>3408</b>	<b>3628</b>	<b>3953</b>	<b>4197</b>	<b>4526</b>

Arm panel – upholstered outside, laminated inside

CAL 133, add \$444 List per three seater

COM 7.25 yds

0.75 yd COM per single seat / 1.0 yd COM per single back / 1.0 yd COM per panel

MODEL	COM	GR 1	GR 2	GR 3	GR 4	GR 5	GR 6
<b>4503M-UU</b>	<b>3088</b>	<b>3470</b>	<b>3595</b>	<b>3848</b>	<b>4223</b>	<b>4509</b>	<b>4892</b>

Arm panel – upholstered, outside and inside

CAL 133, add \$528 List per three seater

Dimensions (inches)

seat H	18.0	seat W	69.0	arm H	25.25
total H	32.75	total W	75.0	depth	29.75

Exceeds BIFMA Seating Durability Test to 1000 lbs per three seater



## DIGNITY Behavioral Health Series

### Standard Features

- Separate seat and back
- Self-skinned polyurethane perimeter arms
- Upholstered side panels can match or contrast seat/back
- Laminate or upholstered side panels on inside and outside of arm
- Select from 15 standard laminates or choose any standard Wilsonart, Nevamar, Formica, Arborite and Pionite matte finish laminates at no upcharge.
- No protruding legs or hardware
- Tamper proof fastenings
- Non-removable steel levelling glides
- Ships assembled
- Ships 1/carton 20 cu ft

Contact Spec Customer Service to railroad fabrics (specify repeat info and yardage requirement will be provided) and for repeats greater than 5" x 5"

### Options

- Specify frame finish, Black (B), Sterling Grey (G) or Taupe RAL 7006 (T)
- Add up to 20 lbs of additional weight per seat, add \$162 List per seat
- Non-standard laminates, contact Spec for pricing
- Antibacterial and antimicrobial fabrics available
- Floor mounting straps available, call Customer Service
- Connecting and freestanding tables
- CAL 133
- Elimination of separated seat and back available with either solid or perforated seat pan, call Customer Service



### Bariatric Single Seater with arms

COM 3.25 yds

1.5 yd COM per single seat / 1.75 yd COM per single back

MODEL	COM	GR 1	GR 2	GR 3	GR 4	GR 5	GR 6
<b>4501G-LL</b>	<b>1907</b>	<b>2079</b>	<b>2134</b>	<b>2247</b>	<b>2417</b>	<b>2546</b>	<b>2716</b>

Arm panel – laminated, outside and inside

CAL 133, add \$154 List per chair

COM 4.25 yds

1.5 yd COM per single seat / 1.75 yd COM per single back / .5 yd COM per panel

MODEL	COM	GR 1	GR 2	GR 3	GR 4	GR 5	GR 6
<b>4501G-LU</b>	<b>2024</b>	<b>2247</b>	<b>2320</b>	<b>2467</b>	<b>2688</b>	<b>2855</b>	<b>3078</b>

Arm panel – laminated, outside, upholstered inside

CAL 133, add \$233 List per chair

COM 4.25 yds

1.5 yd COM per single seat / 1.75 yd COM per single back / .5 yd COM per panel

MODEL	COM	GR 1	GR 2	GR 3	GR 4	GR 5	GR 6
<b>4501G-UL</b>	<b>2024</b>	<b>2247</b>	<b>2320</b>	<b>2467</b>	<b>2688</b>	<b>2855</b>	<b>3078</b>

Arm panel – upholstered outside, laminated inside

CAL 133, add \$233 List per chair

COM 5.25 yds

1.5 yd COM per single seat / 1.75 yd COM per single back / 1.0 yd COM per panel

MODEL	COM	GR 1	GR 2	GR 3	GR 4	GR 5	GR 6
<b>4501G-UU</b>	<b>2140</b>	<b>2416</b>	<b>2506</b>	<b>2688</b>	<b>2963</b>	<b>3170</b>	<b>3447</b>

Arm panel – upholstered, outside and inside

CAL 133, add \$312 List per chair

#### Dimensions (inches)

seat H	18.0	seat W	30.25	arm H	25.25
total H	32.75	total W	36.25	depth	29.75

Exceeds BIFMA Seating Durability Test to 750 lbs per chair



**4501G**  
116 lbs



## DIGNITY Behavioral Health Series

### Standard Features

- Tops in laminate or veneer
- Select from 15 standard laminates or choose any standard Wilsonart, Nevamar, Formica, Arborite and Pionite matte finish laminates at no upcharge.
- Laminate tops with PVC Flat (PVF), Self Edge (SE), or hardwood (HB) edge
- 9 standard veneer and hardwood edge stains. Stain-to-match available at no upcharge.
- Tops utilize NU Green earth friendly core
- 18" height
- Non-removable steel levelling glides

*Radius Corner Tables are recommended for open areas*

### Options

- Specify frame finish, Black (B), Sterling Grey (G) or Taupe RAL 7006 (T)
- Additional weight can be added, contact factory
- Non-standard laminates, contact Spec for pricing
- Floor mounting straps available, call Customer Service



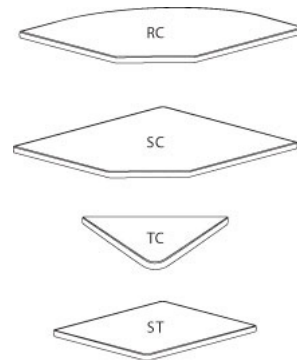
### Freestanding Lounge Tables

Model	Laminate PVF/SE Edge	Laminate HB Edge	Veneer HB Edge	Weight	Cu.Ft.
DIGN - 24 x 24 SQ	1221	1418	1455	57	7.2
DIGN - 30 x 30 SQ	1376	1518	1569	74	13.5
DIGN - 36 x 36 SQ	1503	1725	1787	94	18
DIGN - 42 x 42 SQ	1826	2149	2247	116	24.5
DIGN - 48 x 48 SQ	2023	2306	2411	141	32
DIGN - 24 DIA	1191	1550	1588	45	7.2
DIGN - 30 DIA	1343	1695	1744	57	13.5
DIGN - 36 DIA	1483	1998	2085	71	18
DIGN - 42 DIA	1815	2388	2511	87	24.5
DIGN - 48 DIA	1877	2651	2785	104	32



### Corner and Spacer Connecting Tables

Model	Laminate PVF/SE	Laminate HB Edge	Veneer HB Edge	Weight	Cu.Ft.
DIGNRC - 28 x 28 <i>Radius Corner Table</i>	704	882	1091	31	2
DIGNSC - 28 x 28 <i>Square Corner Table</i>	704	882	1091	32	2
DIGNTC - 45 degree <i>Corner Table</i>	704	882	1091	26	2
DIGNST - 21 x 24 <i>Spacer Table</i>	542	738	890	27	2





Pricing March 1, 2020  
Discount 57.7% from List prices



MAS SIN 33721

## DIGNITY Behavioral Health Series

### Standard Features

- Black finish only
- 6" soft wheel casters
- Standard Dolly holds 1 single seat chair
- Ships 1/carton, 17 cu. ft.
- Ships assembled



### Dignity - Dolly

Description	Model	Price	Weight
Single Seat Dolly	<b>DIGN-99</b>	<b>557</b>	<b>12lb</b>

#### Dimensions (inches)

height	39.0
width	23.0
depth	30.0

