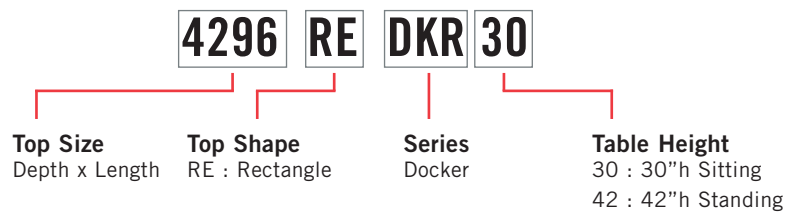


# DOCKER TABLES

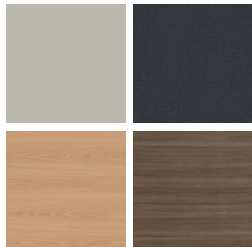


## PRODUCT CODE



## FINISHES

### LAMINATE



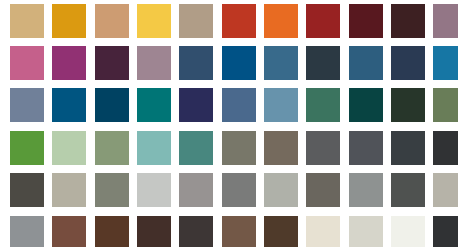
Select from 15 standard laminates or choose any standard Wilsonart, Nevamar, Formica, Arborite and Pionite matte finish laminates at no upcharge

### VENEER



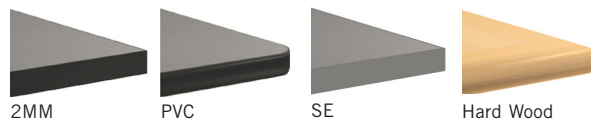
Select from one of our 9 standard wood stains or stain-to-match at no upcharge

### BASE



Select from one of our 76 standard Spectone colors

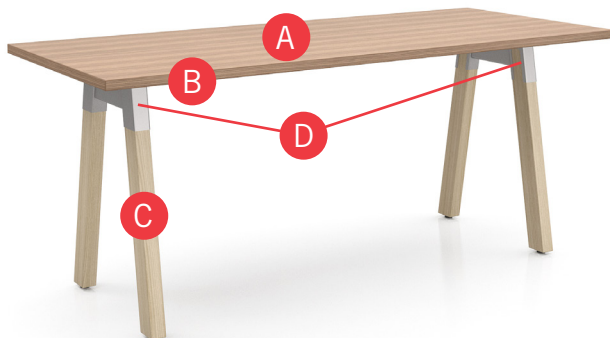
### EDGE



Check out our website for a complete list of edge profiles.

See Spectone Card or [specfurniture.com/materials/finishes](http://specfurniture.com/materials/finishes) for a complete list of finish options and colors.

## HOW TO ORDER



### Specify Top Size (Width x Length)

- A** Specify Top Type and Finish  
*For Laminate Top: Manufacturer, Laminate Name & Code*  
*For Veneer Top: Wood Stain*
- B** Specify Edge Type, (for hardwood: Style), and Finish  
*PVC Flat/2mm Bio/2mm PVC Woodgrain/Self Edge/Hardwood*
- C** Specify Base Style and Wood Finish
- D** Specify Base Metal Finish  
Optional: Casters, Power and Data Modules

Top Size	Top Type and Finish	Edge Type and Finish	Base Style, Wood Finish	Base Metal Finish
36 x 72	Laminate, Arborite, Brown Sugar	Self Edge, Laminate, Arborite, Brown Sugar	DKR30, Natural Wood	Silver



Shipping  
Sep 1, 2019

# DOCKER TABLES

## COLLABORATIVE - 30" HIGH

MODEL	BASES <i>Code</i>	TOP SPECIFICATIONS						OPTIONS		LBS
		<i>For Laminate Top</i>			<i>For Veneer Top</i>			<i>Footrail</i>	<i>Casters (includes Stretcher)</i>	
		SE PVF 2MM	HF HB	HBV HBVR HBG	HF2 HB2 HKN4 HKNR4 HBG2	HF HB HBV HBVR HBG	HF2 HB2 HKN4 HKNR4 HBG2			
<i>30" high</i>										
24 X 72RE	DKR30	2878	3240	3323	3459	3547	3808	440	830	88
24 X 84RE	DKR30	2994	3397	3497	3639	3749	4039	440	830	95
24 X 96RE	DKR30	3016	3523	3639	3815	3940	4279	440	830	103
30 X 72RE	DKR30	3009	3416	3519	3727	3835	4158	440	830	99
30 X 84RE	DKR30	3229	3589	3711	3953	4080	4451	440	830	108
30 X 96RE	DKR30	3250	3806	3953	4176	4326	4749	440	830	117
36 X 72RE	DKR30	3067	3519	3635	3904	4034	4420	440	830	113
36 X 84RE	DKR30	3395	3879	4031	4264	4416	4871	440	830	124
36 X 96RE	DKR30	3402	4091	4264	4536	4711	5215	440	830	134
42 X 72RE	DKR30	3352	3787	3939	4172	4322	4777	440	830	124
42 X 84RE	DKR30	3633	4049	4215	4617	4749	5276	440	830	136
42 X 96RE	DKR30	3684	4559	4796	5035	5389	6074	440	830	149



DKR30



DKR30

WITH OPTIONAL CASTERS



OPTIONAL INTEGRATED  
VERTICAL WIRE MANAGER

### STANDARD FEATURES

- Select from 15 standard laminates or choose any standard Wilsonart, Nevamar, Formica, Arborite and Pionite matte finish laminates at no upcharge. For other laminate please contact the factory for pricing.
- Standard in Solid Maple wood legs.
- Wood base components available in natural wood and 9 standard wood stains. Stain-to-match available at no upcharge.
- Metal base components available in any Spectone color.
- Standard with leveling glides.
- Ships Knocked Down.

### OPTIONS

- 4 locking casters standard in Grey, stretcher included
- For applicable Power & Data modules, please see Table Accessories Price List.
- Footrail can be placed centered, on the left, right, or both sides of the table. On 24" w tables one footrest is recommended, centered.
- Integrated vertical wire manager is available on inside right leg only, add \$250 List each.
- For 1-3/4" solid wood top, please contact Factory.
- Chroming is available, please contact Factory.

### HOW TO ORDER

1. Select Model
2. Select Base
3. Select Edge Style
4. Select Options
5. Select Top Finish
6. Select Edge Finish
7. Select Base Finish

**Example:** 3684RE - DKR30 - 2MM

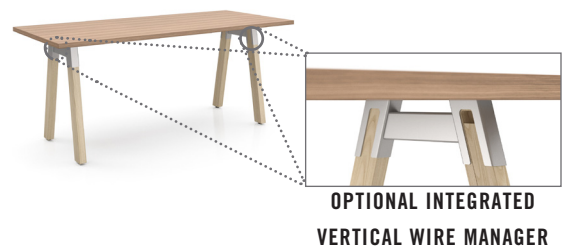
MODEL | BASE | EDGE



Shipping  
Sep 1, 2019

# DOCKER TABLES COLLABORATIVE - 36" HIGH

MODEL	BASES <i>Code</i>	TOP SPECIFICATIONS						OPTIONS		LBS
		<i>For Laminate Top</i>			<i>For Veneer Top</i>			<i>Footrail</i>	<i>Casters (includes Stretcher)</i>	
		SE PVF 2MM	HF HB	HBV HBVR HBG	HF2 HB2 HKN4 HKNR4 HBG2	HF HB HBV HBVR HBG	HF2 HB2 HKN4 HKNR4 HBG2			
<i>36" high</i>										
24 X 72RE	DKR36	3478	3840	3923	4059	4147	4408	440	830	102
24 X 84RE	DKR36	3594	3997	4097	4239	4349	4639	440	830	109
24 X 96RE	DKR36	3616	4123	4239	4415	4540	4879	440	830	117
30 X 72RE	DKR36	3609	4016	4119	4327	4435	4758	440	830	113
30 X 84RE	DKR36	3829	4189	4311	4553	4680	5051	440	830	122
30 X 96RE	DKR36	3850	4406	4553	4776	4926	5349	440	830	131
36 X 72RE	DKR36	3667	4119	4235	4504	4634	5020	440	830	128
36 X 84RE	DKR36	3995	4479	4631	4864	5016	5471	440	830	139
36 X 96RE	DKR36	4002	4691	4864	5136	5311	5815	440	830	149
42 X 72RE	DKR36	3952	4387	4539	4772	4922	5377	440	830	139
42 X 84RE	DKR36	4233	4649	4815	5217	5349	5876	440	830	151
42 X 96RE	DKR36	4284	5159	5396	5635	5989	6674	440	830	164



### STANDARD FEATURES

- Standard with a lower crossmember on each leg
- Select from 15 standard laminates or choose any standard Wilsonart, Nevamar, Formica, Arborite and Pionite matte finish laminates at no upcharge. For other laminate please contact the factory for pricing.
- Standard in Solid Maple wood legs.
- Wood base components available in natural wood and 9 standard wood stains. Stain-to-match available at no upcharge.
- Standard with leveling glides.
- Metal base components available in any Spectone color.
- Ships Knocked Down.

### OPTIONS

- 4 locking casters standard in Grey, stretcher included
- For applicable Power & Data modules, please see Table Accessories Price List.
- Footrail can be placed centered, on the left, right, or both sides of the table. On 24" w tables one footrest is recommended, centered.
- Integrated vertical wire manager is available on inside right leg only, add \$250 List each.
- For 1-3/4" solid wood top, please contact Factory.
- Chroming is available, please contact Factory.

### HOW TO ORDER

1. Select Model
2. Select Base
3. Select Edge Style
4. Select Options
5. Select Top Finish
6. Select Edge Finish
7. Select Base Finish

**Example:** 3684RE - DKR36 - 2MM

MODEL | BASE | EDGE



Shipping  
Sep 1, 2019

# DOCKER TABLES

## COLLABORATIVE - 42" HIGH

MODEL	BASES <i>Code</i>	TOP SPECIFICATIONS						OPTIONS		LBS
		<i>For Laminate Top</i>			<i>For Veneer Top</i>			<i>Footrail</i>	<i>Casters (includes Stretcher)</i>	
		SE PVF 2MM	HF HB	HBV HBVR HBG	HF2 HB2 HKN4 HKNR4 HBG2	HF HB HBV HBVR HBG	HF2 HB2 HKN4 HKNR4 HBG2			
<i>42" high</i>										
24 X 72RE	DKR42	3478	3840	3923	4059	4147	4408	440	830	102
24 X 84RE	DKR42	3594	3997	4097	4239	4349	4639	440	830	109
24 X 96RE	DKR42	3616	4123	4239	4415	4540	4879	440	830	117
30 X 72RE	DKR42	3609	4016	4119	4327	4435	4758	440	830	113
30 X 84RE	DKR42	3829	4189	4311	4553	4680	5051	440	830	122
30 X 96RE	DKR42	3850	4406	4553	4776	4926	5349	440	830	131
36 X 72RE	DKR42	3667	4119	4235	4504	4634	5020	440	830	128
36 X 84RE	DKR42	3995	4479	4631	4864	5016	5471	440	830	139
36 X 96RE	DKR42	4002	4691	4864	5136	5311	5815	440	830	149
42 X 72RE	DKR42	3952	4387	4539	4772	4922	5377	440	830	139
42 X 84RE	DKR42	4233	4649	4815	5217	5349	5876	440	830	151
42 X 96RE	DKR42	4284	5159	5396	5635	5989	6674	440	830	164



DKR42



DKR42

WITH OPTIONAL CASTERS



OPTIONAL INTEGRATED  
VERTICAL WIRE MANAGER

### STANDARD FEATURES

- Standard with a lower crossmember on each leg
- Select from 15 standard laminates or choose any standard Wilsonart, Nevamar, Formica, Arborite and Pionite matte finish laminates at no upcharge. For other laminate please contact the factory for pricing.
- Standard in Solid Maple wood legs.
- Wood base components available in natural wood and 9 standard wood stains. Stain-to-match available at no upcharge.
- Standard with leveling glides.
- Metal base components available in any Spectone color.
- Ships Knocked Down.

### OPTIONS

- 4 locking casters standard in Grey, stretcher included
- For applicable Power & Data modules, please see Table Accessories Price List.
- Footrail can be placed centered, on the left, right, or both sides of the table. On 24" w tables one footrest is recommended, centered.
- Integrated vertical wire manager is available on inside right leg only, add \$250 List each.
- For 1-3/4" solid wood top, please contact Factory.
- Chroming is available, please contact Factory.

### HOW TO ORDER

1. Select Model
2. Select Base
3. Select Edge Style
4. Select Options
5. Select Top Finish
6. Select Edge Finish
7. Select Base Finish

Example: 3684RE - DKR42 - 2MM

MODEL | BASE | EDGE