



Pricing March 1, 2020  
Discount 57.7% from List prices

**spec**

MAS SIN 33721

## COOPER COLLECTION - DWIGHT Lounge Seating

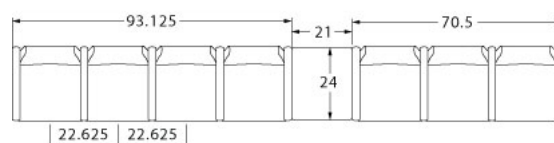
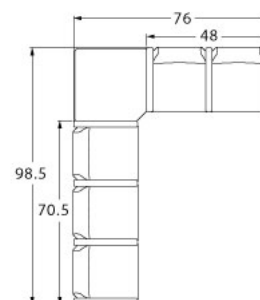
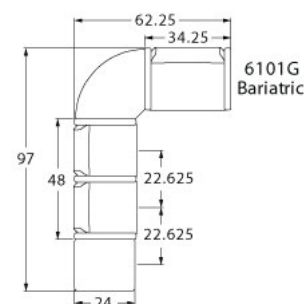
### LAYOUTS



### Description

- Spec's Dwight offers a steel leg frame with elements of wood giving it a softer look and feel of wood, without sacrificing high durability.
- Your layout possibilities are unlimited with spacer, radius and corner tables – for both standard and bariatric seating in virtually any combination.
- Bariatric seating is a 30" wide seat and is load tested to 750 lbs. Cannot be connected to other bariatric seats.
- 21" seat width is standard.
- Standard in European Beech in any of 9 standard stains or stain-to-match at no upcharge.
- Choice of wood or polyurethane arms in flat (WF or PF) or rounded (WR or PR) profile.
- Arms are replaceable in the field.
- All models offer a choice of no center arms, half arms or full arms to the floor.
- Glides and separate seat and back are standard.
- Please send a drawing of the configuration you require with your order.
- For fabrics you wish railroaded or repeats larger than 5" x 5", please contact the factory with repeat information and yardage requirement will be provided.

### LAYOUTS AND DIMENSIONS





Pricing March 1, 2020  
Discount 57.7% from List prices

**spec**

MAS SIN 33721

## COOPER COLLECTION - DWIGHT Lounge Seating



### PRODUCT CODE

**6 1 2 3 M - WR**

#### Collection

6 : Cooper

#### Series

1 : Dwight

#### Center Arm

0 : Outside Arms

1 : Half Arms

2 : Full Arms

#### Number of Seats

1 : Single Seater

2 : Two Seater

3 : Three Seater

#### Chair Type

M : Mid Back

H : Highback

L : Loveseat

G : Bariatric

ME : Hip Chair

B : Bench

#### Arm Type

WF : Wood Flat Profile

WR : Wood Round Profile

PF : Poly Flat Profile

PR : Poly Round Profile

K : KYDEX® Flat Profile

### OPTIONS

#### ARM TYPE



Polyurethane



Wood



KYDEX®

#### PANEL ARMS



Half Panel Arms

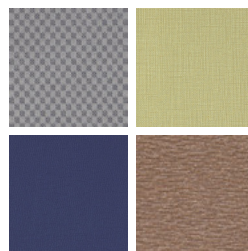
### FINISHES

#### FRAME



Select from one of our 76 standard Spectone colors

#### FABRIC



Select fabrics from one of our textile partners

#### ARMS



Black

Sterling Grey

Taupe

Select from one of our 9 standard wood stains or stain-to-match at no upcharge

See Spectone Card or [specfurniture.com/materials/finishes](http://specfurniture.com/materials/finishes) for a complete list of finish options and colors.



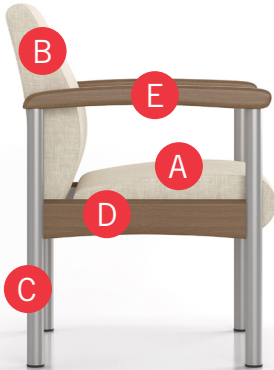
Pricing March 1, 2020  
Discount 57.7% from List prices



## COOPER COLLECTION - DWIGHT Lounge Seating

MAS SIN 33721

### HOW TO ORDER



#### Specify Model

- A** Specify Fabric - Seat<sup>1</sup>  
*Manufacturer, Pattern Name, Color*
- B** Specify Fabric - Back<sup>1</sup>  
*Manufacturer, Pattern Name, Color*
- C** Specify Frame Finish
- D** Specify Side Rail Finish
- E** Specify Arm Type, Profile and Color  
Polyurethane (Flat or Round) / Wood (Flat or Round) / KYDEX® (\$) (Flat)

Optional: KYDEX® Arm, CAL 133, Moisture Barrier, Half Panel Arms, Connecting and Freestanding Tables, Benches, Ottoman, Vinyl Headrest Insert

<sup>1</sup> When multiple fabrics are specified on two and three seat chairs, please provide a drawing and legend for fabric placement.

Model	Fabric - Seat	Fabric - Back	Frame Finish	Side Rail Finish	Arm Type, Profile and Color
6101M	Momentum, Beeline, Canvas	Momentum, Beeline, Canvas	Silver	Studio Teak Stain	Wood, Round, Studio Teak Stain



Pricing March 1, 2020  
Discount 57.7% from List prices

**spec**

MAS SIN 33721

## COOPER COLLECTION - DWIGHT Lounge Seating

Designed for today's healthcare facilities

Single Seater with arms

### Standard Features

- Separate seat and back
- Wood components in Beech, in any of 9 standard stains or stain-to-match at no upcharge
- Fully welded frame with 1.625" steel legs
- Frame in any Spectone color
- Glides
- Velcro removable back covers
- Replaceable seats
- Arms replaceable in the field
- Use in connected layouts at no upcharge
- Ships assembled
- Ships 1/carton 15 cu ft

### Options

- Wood or polyurethane arms, in flat (WF or PF) or rounded (WR or PR) profile
- Round polyurethane arms available in Black, Sterling Grey and Taupe (RAL 7006)
- Flat polyurethane arms available in Black only
- KYDEX® flat arms available in Black (B) or Taupe RAL 7006 (T) or Sterling Grey (G)
- Connected and freestanding tables
- Antibacterial and antimicrobial fabrics available
- Different fabric on seat and back at no upcharge
- CAL 133

Contact Spec Customer Service to railroad fabrics (specify repeat info and yardage requirement will be provided) and for repeats greater than 5" x 5"



### Single Seater with arms

COM 1.75 yds

0.75 yd COM per single seat

1.0 yd COM per single back

MODEL	COM	GR 1	GR 2	GR 3	GR 4	GR 5	GR 6
<b>6101M</b>	<b>1067</b>	<b>1156</b>	<b>1186</b>	<b>1247</b>	<b>1336</b>	<b>1406</b>	<b>1497</b>

Dimensions (inches)

seat H	18.0	seat W	21.0	arm H	25.0
total H	33.75	total W	25.25	depth	25.0

**For KYDEX® flat arms add suffix K and \$274**

Dynamic load tested to 500 lbs per chair

CAL 133, add \$120 List per chair



**6101M**  
40 lbs



Pricing March 1, 2020  
Discount 57.7% from List prices

spec™

MAS SIN 33721

## COOPER COLLECTION - DWIGHT Lounge Seating

Designed for today's healthcare facilities

Two and Three Seaters with outside arms

### Standard Features

- Separate seat and back
- Wood components in Beech, in any of 9 standard stains or stain-to-match at no upcharge
- Fully welded frame with 1.625" steel legs
- Frame in any Spectone color
- Glides
- Velcro removable back covers
- Replaceable seats
- Arms removable in the field
- Use in connected layouts at no upcharge
- Ships assembled
- Ships 1/carton 26 cu ft (2 seater),  
1/carton 39 cu ft (3 seater)

### Options

- Wood or polyurethane arms, in flat (WF or PF) or rounded (WR or PR) profile
- Round polyurethane arms available in Black, Sterling Grey and Taupe (RAL 7006)
- Flat polyurethane arms available in Black only
- KYDEX® flat arms available in Black (B) or Taupe RAL 7006 (T) or Sterling Grey (G)
- Connected and freestanding tables
- Antibacterial and antimicrobial fabrics available
- Different fabric on seat and back at no upcharge
- CAL 133

Contact Spec Customer Service to railroad fabrics (specify repeat info and yardage requirement will be provided) and for repeats greater than 5" x 5"



### Two Seater with outside arms

COM 3.5 yds

0.75 yd COM per single seat

1.0 yd COM per single back

MODEL	COM	GR 1	GR 2	GR 3	GR 4	GR 5	GR 6
6102M	1546	1727	1788	1908	2090	2228	2407

Dimensions (inches)

seat H	18.0	seat W	21.0	arm H	25.0
total H	33.75	total W	46.5	depth	25.0

**For KYDEX® flat arms add suffix K and \$274**

Dynamic load tested to 750 lbs per two seater

CAL 133, add \$240 List per two seater



**6102M**  
66 lbs

### Three Seater with outside arms

COM 5.25 yds

0.75 yd COM per single seat

1.0 yd COM per single back

MODEL	COM	GR 1	GR 2	GR 3	GR 4	GR 5	GR 6
6103M	2029	2302	2391	2571	2843	3050	3321

Dimensions (inches)

seat H	18.0	seat W	21.0	arm H	25.0
total H	33.75	total W	67.5	depth	25.0

**For KYDEX® flat arms add suffix K and \$274**

Dynamic load tested to 1000 lbs per three seater

CAL 133, add \$360 List per three seater



**6103M**  
92 lbs



Pricing March 1, 2020  
Discount 57.7% from List prices

spec™

MAS SIN 33721

## COOPER COLLECTION - DWIGHT Lounge Seating

Designed for today's healthcare facilities  
Two and Three Seaters with half arms

### Standard Features

- Separate seat and back
- Wood components in Beech, in any of 9 standard stains or stain-to-match at no upcharge
- Fully welded frame with 1.625" steel legs
- Frame in any Spectone color
- Glides
- Velcro removable back covers
- Replaceable seats
- Arms replaceable in the field
- Use in connected layouts at no upcharge
- Ships assembled
- Ships 1/carton 26 cu ft (2 seater),  
1/carton 39 cu ft (3 seater)

### Options

- Wood or polyurethane arms, in flat (WF or PF) or rounded (WR or PR) profile
- Round polyurethane arms available in Black, Sterling Grey and Taupe (RAL 7006)
- Flat polyurethane arms available in Black only
- KYDEX® flat arms available in Black (B) or Taupe RAL 7006 (T) or Sterling Grey (G)
- Connected and freestanding tables
- Antibacterial and antimicrobial fabrics available
- Different fabric on seat and back at no upcharge
- CAL 133

Contact Spec Customer Service to railroad fabrics (specify repeat info and yardage requirement will be provided) and for repeats greater than 5" x 5"



### Two Seater with half arms

COM 3.5 yds  
0.75 yd COM per single seat  
1.0 yd COM per single back

MODEL	COM	GR 1	GR 2	GR 3	GR 4	GR 5	GR 6
<b>6112M</b>	<b>1972</b>	<b>2152</b>	<b>2214</b>	<b>2334</b>	<b>2513</b>	<b>2653</b>	<b>2833</b>

Dimensions (inches)

seat H	18.0	seat W	21.0	arm H	25.0
total H	33.75	total W	48.0	depth	25.0

**For KYDEX® flat arms add suffix K and \$411**  
Dynamic load tested to 750 lbs per two seater  
CAL 133, add \$240 List per two seater



**6112M**  
68 lbs

### Three Seater with half arms

COM 5.25 yds  
0.75 yd COM per single seat  
1.0 yd COM per single back

MODEL	COM	GR 1	GR 2	GR 3	GR 4	GR 5	GR 6
<b>6113M</b>	<b>2880</b>	<b>3150</b>	<b>3240</b>	<b>3421</b>	<b>3693</b>	<b>3898</b>	<b>4170</b>

Dimensions (inches)

seat H	18.0	seat W	21.0	arm H	25.0
total H	33.75	total W	70.5	depth	25.0

**For KYDEX® flat arms add suffix K and \$548**  
Dynamic load tested to 1000 lbs per three seater  
CAL 133, add \$360 List per three seater



**6113M**  
96 lbs



Pricing March 1, 2020  
Discount 57.7% from List prices

spec

MAS SIN 33721

## COOPER COLLECTION - DWIGHT Lounge Seating

Designed for today's healthcare facilities

Two and Three Seaters with full arms

### Standard Features

- Separate seat and back
- Wood components in Beech, in any of 9 standard stains or stain-to-match at no upcharge
- Fully welded frame with 1.625" steel legs
- Frame in any Spectone color
- Glides
- Velcro removable back covers
- Replaceable seats
- Arms replaceable in the field
- Use in connected layouts at no upcharge
- Ships assembled
- Ships 1/carton 26 cu ft (2 seater),  
1/carton 39 cu ft (3 seater)

### Options

- Wood or polyurethane arms, in flat (WF or PF) or rounded (WR or PR) profile
- Round polyurethane arms available in Black, Sterling Grey and Taupe (RAL 7006)
- Flat polyurethane arms available in Black only
- KYDEX® flat arms available in Black (B) or Taupe RAL 7006 (T) or Sterling Grey (G)
- Connected and freestanding tables
- Antibacterial and antimicrobial fabrics available
- Different fabric on seat and back at no upcharge
- CAL 133

Contact Spec Customer Service to railroad fabrics (specify repeat info and yardage requirement will be provided) and for repeats greater than 5" x 5"



### Two Seater with full arms

COM 3.5 yds

0.75 yd COM per single seat

1.0 yd COM per single back

MODEL	COM	GR 1	GR 2	GR 3	GR 4	GR 5	GR 6
6122M	1972	2152	2214	2334	2513	2653	2833

Dimensions (inches)

seat H	18.0	seat W	21.0	arm H	25.0
total H	33.75	total W	48.5	depth	25.0

**For KYDEX® flat arms add suffix K and \$411**

Dynamic load tested to 750 lbs per two seater

CAL 133, add \$240 List per two seater



**6122M**  
73 lbs

### Three Seater with full arms

COM 5.25 yds

0.75 yd COM per single seat

1.0 yd COM per single back

MODEL	COM	GR 1	GR 2	GR 3	GR 4	GR 5	GR 6
6123M	2880	3150	3240	3421	3693	3898	4170

Dimensions (inches)

seat H	18.0	seat W	21.0	arm H	25.0
total H	33.75	total W	70.5	depth	25.0

**For KYDEX® flat arms add suffix K and \$548**

Dynamic load tested to 1000 lbs per three seater

CAL 133, add \$360 List per three seater



**6123M**  
99 lbs





Pricing March 1, 2020  
Discount 57.7% from List prices

**spec**

MAS SIN 33721

## COOPER COLLECTION - DWIGHT Lounge Seating

Designed for today's healthcare facilities

Loveseat with arms

### Standard Features

- Separate seat and back
- Wood components in Beech, in any of 9 standard stains or stain-to-match at no upcharge
- Fully welded frame with 1.625" steel legs
- Frame in any Spectone color
- Glides
- Velcro removable back covers
- Replaceable seats
- Arms replaceable in the field
- Use in connected layouts at no upcharge
- Ships assembled
- Ships 1/carton 20 cu ft

### Options

- Wood or polyurethane arms, in flat (WF or PF) or rounded (WR or PR) profile
- Round polyurethane arms available in Black, Sterling Grey and Taupe (RAL 7006)
- Flat polyurethane arms available in Black only
- KYDEX® flat arms available in Black (B) or Taupe RAL 7006 (T) or Sterling Grey (G)
- Connected and freestanding tables
- Antibacterial and antimicrobial fabrics available
- Different fabric on seat and back at no upcharge
- CAL 133

Contact Spec Customer Service to railroad fabrics (specify repeat info and yardage requirement will be provided) and for repeats greater than 5" x 5"



### Loveseat with arms

COM 4.0 yds

2.0 yd COM per single seat

2.0 yd COM per single back

MODEL	COM	GR 1	GR 2	GR 3	GR 4	GR 5	GR 6
<b>6101L</b>	<b>1672</b>	<b>1883</b>	<b>1952</b>	<b>2097</b>	<b>2304</b>	<b>2465</b>	<b>2677</b>

Dimensions (inches)

seat H	18.0	seat W	42.0	arm H	25.0
total H	33.75	total W	44.75	depth	25.0

**For KYDEX® flat arms add suffix K and \$274**

Dynamic Load Tested to 750 lbs per chair

CAL 133, add \$184 List per chair



**6101L**  
66 lbs





Pricing March 1, 2020  
Discount 57.7% from List prices

**spec**

MAS SIN 33721

## COOPER COLLECTION - DWIGHT Lounge Seating

Designed for today's healthcare facilities

Bariatric Single Seater with arms

### Standard Features

- Separate seat and back
- Wood components in Beech, in any of 9 standard stains or stain-to-match at no upcharge
- Fully welded frame with 1.625" steel legs
- Frame in any Spectone color
- Glides
- Velcro removable back covers
- Replaceable seats
- Arms replaceable in the field
- Use in connected layouts at no upcharge
- Bariatric seating cannot connect to bariatric seating
- Ships assembled
- Ships 1/carton 20 cu ft

### Options

- Wood or polyurethane arms, in flat (WF or PF) or rounded (WR or PR) profile
- Round polyurethane arms available in Black, Sterling Grey and Taupe (RAL 7006)
- Flat polyurethane arms available in Black only
- KYDEX® flat arms available in Black (B) or Taupe RAL 7006 (T) or Sterling Grey (G)
- Connected and freestanding tables
- Antibacterial and antimicrobial fabrics available
- Different fabric on seat and back at no upcharge
- CAL 133

Contact Spec Customer Service to railroad fabrics (specify repeat info and yardage requirement will be provided) and for repeats greater than 5" x 5"



### Bariatric Single Seater with arms

COM 3.0 yds

1.5 yd COM per single seat

1.5 yd COM per single back

MODEL	COM	GR 1	GR 2	GR 3	GR 4	GR 5	GR 6
<b>6101G</b>	<b>1272</b>	<b>1454</b>	<b>1514</b>	<b>1634</b>	<b>1815</b>	<b>1952</b>	<b>2134</b>

Dimensions (inches)

seat H	18.0	seat W	30.0	arm H	25.0
total H	33.75	total W	34.25	depth	25.0

**For KYDEX® flat arms add suffix K and \$274**

Dynamic Load Tested to 750 lbs per chair

CAL 133, add \$150 List per chair



**6101G**  
47 lbs



Pricing March 1, 2020  
Discount 57.7% from List prices

spec™

MAS SIN 33721

## COOPER COLLECTION - DWIGHT Lounge Seating

Designed for today's healthcare facilities  
Highback Single Seater with arms – Ottoman

### Standard Features

- Separate seat and back
- Wood components in Beech, in any of 9 standard stains or stain-to-match at no upcharge
- Fully welded frame with 1.625" steel legs
- Frame in any Spectone color
- Glides
- Velcro removable back covers
- Replaceable seats
- Arms replaceable in the field
- Use in connected layouts at no upcharge
- Ships assembled
- Ships 1/carton 19 cu ft
- Ottoman ships 1/carton 5 cu ft

### Options

- Wood or polyurethane arms, in flat (WF or PF) or rounded (WR or PR) profile
- Round polyurethane arms available in Black, Sterling Grey and Taupe (RAL 7006)
- Flat polyurethane arms available in Black only
- KYDEX® flat arms available in Black (B) or Taupe RAL 7006 (T) or Sterling Grey (G)
- Vinyl insert on top of the back, add \$44 List/seat back
- Connected and freestanding tables
- Antibacterial and antimicrobial fabrics available
- Different fabric on seat and back at no upcharge
- CAL 133

Contact Spec Customer Service to railroad fabrics (specify repeat info and yardage requirement will be provided) and for repeats greater than 5" x 5"



### Highback Single Seater with arms

COM 2.5 yds  
0.75 yd COM per single seat  
1.75 yds COM per single back

MODEL	COM	GR 1	GR 2	GR 3	GR 4	GR 5	GR 6
<b>6101H</b>	<b>1141</b>	<b>1284</b>	<b>1328</b>	<b>1426</b>	<b>1567</b>	<b>1674</b>	<b>1854</b>

#### Dimensions (inches)

seat H	18.0	seat W	21.0	arm H	25.0
total H	47.5	total W	25.25	depth	25.0

**For KYDEX® flat arms add suffix K and \$274**

Dynamic load tested to 500 lbs per chair

CAL 133, add \$134 List per chair



**6101H**  
43 lbs

### Ottoman

0.5 yd COM per ottoman

MODEL	COM	GR 1	GR 2	GR 3	GR 4	GR 5	GR 6
<b>6130F</b>	<b>465</b>	<b>499</b>	<b>512</b>	<b>536</b>	<b>572</b>	<b>600</b>	<b>646</b>

#### Ottoman Dimensions (inches)

H	11.5	W	19.25	depth	12.25
---	------	---	-------	-------	-------

CAL 133, add \$55 List



**6130F**  
16 lbs



Pricing March 1, 2020  
Discount 57.7% from List prices



MAS SIN 33721

## COOPER COLLECTION - DWIGHT Lounge Seating

Designed for today's healthcare facilities

Half Panel Arm

### Options

To order half panel arms, add Z to model number,  
e.g. 6101**Z**

- Antibacterial and antimicrobial fabrics available
- CAL 133

***Pricing is for one half panel arm, e.g. for a single  
seater chair with half panel arms, add two half panel  
arms to cost of chair***

*Contact Spec Customer Service to railroad fabrics  
(specify repeat info and yardage requirement will  
be provided) and for repeats greater than 5" x 5"*



### Half Panel Arm

COM 0.5 yds per half panel arm

MODEL	COM	GR 1	GR 2	GR 3	GR 4	GR 5	GR 6
<b>Z</b>	<b>77</b>	<b>102</b>	<b>108</b>	<b>124</b>	<b>149</b>	<b>166</b>	<b>193</b>

CAL 133, add \$42 List per half panel arm



1.5 lbs per half panel arm



Pricing March 1, 2020  
Discount 57.7% from List prices



MAS SIN 33721

## COOPER COLLECTION - DWIGHT Lounge Seating

Designed for today's healthcare facilities

Easy Access Hip Single Seater with arms

### Standard Features

- Separate seat and back
- Wood components in Beech, in any of 9 standard stains or stain-to-match at no upcharge
- Fully welded frame with 1.625" steel legs
- Frame in any Spectone color
- Glides
- Velcro removable back covers
- Replaceable seats
- Arms replaceable in the field
- 24" seat height, no seat pitch (level)
- Footrest which assists entering/exiting chair
- Ships assembled
- Ships 1/carton 19 cu ft

### Options

- Wood or polyurethane arms, in flat (WF or PF) or rounded (WR or PR) profile
- Round polyurethane arms available in Black, Sterling Grey and Taupe (RAL 7006)
- Flat polyurethane arms available in Black only
- KYDEX® flat arms available in Black (B) or Taupe RAL 7006 (T) or Sterling Grey (G)
- Antibacterial and antimicrobial fabrics available
- Different fabric on seat and back at no upcharge
- CAL 133

Contact Spec Customer Service to railroad fabrics (specify repeat info and yardage requirement will be provided) and for repeats greater than 5" x 5"



### Easy Access Hip Single Seater with arms

COM 1.75 yds

0.75 yd COM per single seat

1.0 yd COM per single back

MODEL	COM	GR 1	GR 2	GR 3	GR 4	GR 5	GR 6
<b>6101ME</b>	<b>1290</b>	<b>1381</b>	<b>1409</b>	<b>1471</b>	<b>1561</b>	<b>1630</b>	<b>1721</b>

Dimensions (inches)

seat H	24.0	seat W	21.0	arm H	32.0
total H	46.0	total W	25.25	depth	25.0

**For KYDEX® flat arms add suffix K and \$274**

Dynamic Load Tested to 500 lbs per chair

CAL 133, add \$120 List per chair



**6101ME**  
47 lbs



Pricing March 1, 2020  
Discount 57.7% from List prices

spec™

MAS SIN 33721

## COOPER COLLECTION - DWIGHT Lounge Seating

Designed for today's healthcare facilities

Single and Two Seater Benches

### Standard Features

- Wood components in Beech, in any of 9 standard stains or stain-to-match at no upcharge
- Fully welded frame with 1.625" steel legs
- Frame in any Spectone color
- Glides
- Use in connected layouts at no upcharge
- Arms replaceable in the field
- Replaceable seats
- Ships assembled
- Ships 1/carton 9 cu ft (single seater), 14 cu ft (2 seater), 21 cu ft (3 seater)

### Options

- Antibacterial and antimicrobial fabrics available
- CAL 133

Contact Spec Customer Service to railroad fabrics (specify repeat info and yardage requirement will be provided) and for repeats greater than 5" x 5"

### Single Seater Bench

COM 1.0 yds

1.0 yd COM per single seat

MODEL	COM	GR 1	GR 2	GR 3	GR 4	GR 5	GR 6
<b>6101B</b>	<b>656</b>	<b>716</b>	<b>735</b>	<b>776</b>	<b>834</b>	<b>879</b>	<b>958</b>

No arms

<b>6101B</b>	<b>894</b>	<b>955</b>	<b>971</b>	<b>1012</b>	<b>1071</b>	<b>1116</b>	<b>1201</b>
--------------	------------	------------	------------	-------------	-------------	-------------	-------------

End arms (WF/WR or PF/PR)

Dimensions (inches)

seat H	18.0	seat W	21.0	arm H	24.0	depth	26.25
total H	N/A	total W	24.25	total W	25.25		
		w/o arms		w/end arms			

Dynamic load tested to 500 lbs per bench

CAL 133, add \$55 List per bench



**6101B**  
22 lbs

### Two Seater Bench

COM 2.0 yds

1.0 yd COM per single seat

MODEL	COM	GR 1	GR 2	GR 3	GR 4	GR 5	GR 6
<b>6102B</b>	<b>915</b>	<b>1032</b>	<b>1071</b>	<b>1150</b>	<b>1269</b>	<b>1359</b>	<b>1509</b>

No arms

<b>6102B</b>	<b>1151</b>	<b>1271</b>	<b>1311</b>	<b>1387</b>	<b>1508</b>	<b>1597</b>	<b>1750</b>
--------------	-------------	-------------	-------------	-------------	-------------	-------------	-------------

End arms (WF/WR or PF/PR)

<b>6112B</b>	<b>1374</b>	<b>1492</b>	<b>1533</b>	<b>1610</b>	<b>1728</b>	<b>1820</b>	<b>1979</b>
--------------	-------------	-------------	-------------	-------------	-------------	-------------	-------------

Arms between and at ends (WF/WR or PF/PR)

Dimensions (inches)

seat H	18.0	seat W	21.0	arm H	24.0	depth	26.25
total H	N/A	total W	45.25	total W	46.25		
		w/o arms		w/end arms			

Dynamic load tested to 750 lbs per two seat bench

CAL 133, add \$110 List per two seat bench



**6102B**  
41 lbs

Toll Free: 1-888-761-7732



Pricing March 1, 2020  
Discount 57.7% from List prices

spec™

MAS SIN 33721

## COOPER COLLECTION - DWIGHT Lounge Seating

Designed for today's healthcare facilities

Three Seater Bench

### Standard Features

- Wood components in Beech, in any of 9 standard stains or stain-to-match at no upcharge
- Fully welded frame with 1.625" steel legs
- Frame in any Spectone color
- Glides
- Use in connected layouts at no upcharge
- Arms replaceable in the field
- Replaceable seats
- Ships assembled
- Ships 1/carton 9 cu ft (single seater), 14 cu ft (2 seater), 21 cu ft (3 seater)

### Options

- Antibacterial and antimicrobial fabrics available
- CAL 133

Contact Spec Customer Service to railroad fabrics (specify repeat info and yardage requirement will be provided) and for repeats greater than 5" x 5"



### Three Seater Bench

COM 3.0 yds

1.0 yd COM per single seat

MODEL	COM	GR 1	GR 2	GR 3	GR 4	GR 5	GR 6
<b>6103B</b>	<b>1232</b>	<b>1408</b>	<b>1467</b>	<b>1585</b>	<b>1763</b>	<b>1899</b>	<b>2117</b>

No arms

<b>6103B</b>	<b>1471</b>	<b>1648</b>	<b>1708</b>	<b>1825</b>	<b>2004</b>	<b>2137</b>	<b>2364</b>
--------------	-------------	-------------	-------------	-------------	-------------	-------------	-------------

End arms (WF/WR or PF/PR)

<b>6113B</b>	<b>1979</b>	<b>2156</b>	<b>2215</b>	<b>2334</b>	<b>2511</b>	<b>2647</b>	<b>2884</b>
--------------	-------------	-------------	-------------	-------------	-------------	-------------	-------------

Arms between and at ends (WF/WR or PF/PR)



**6103B**  
60 lbs

### Dimensions (inches)

seat H	18.0	seat W	21.0	arm H	24.0	depth	26.25
total H	N/A	total W	66.25	total W	67.25		
		w/o arms		w/end arms			

Dynamic load tested to 1000 lbs per three seat bench  
CAL 133, add \$165 List per three seat bench





Pricing March 1, 2020  
Discount 57.7% from List prices

spec™

MAS SIN 33721

## COOPER COLLECTION - DWIGHT Lounge Seating

Designed for today's healthcare facilities

Freestanding Lounge Tables – Corner and Spacer Connecting Tables

### Standard Features

- Tops in laminate or veneer
- Select laminate tops from 15 standard laminates or choose any standard Wilsonart, Nevamar, Formica, Arborite and Pionite matte finish laminates at no upcharge.
- Freestanding lounge tables available with PVC Flat (PVF), 2mm (2MM), exposed Baltic Birch plywood (PF, PKNR) or hardwood (HB) edge
- Connecting table tops available with PVC Flat (PVF) edge, Self edge (SE) or hardwood (HB) edge
- 9 standard veneer and hardwood edge stains. Stain-to-match available at no upcharge.
- Steel legs and Beech table skirts
- Frame in any Spectone color
- Tops utilize NU Green earth friendly core
- Threaded replaceable glides
- 18" height

### Options

- Non-standard laminates, contact Spec for pricing
- Custom size spacer tables for restricted spaces
- Self edge available at same cost as PVC Flat (PVF) edge
- Other sizes may be available

*Radius Corner Tables are recommended for open areas*

### Freestanding Lounge Tables

Model	Laminate PVF/SE/2MM	Laminate PF/PKNR/HB	Veneer HB	Weight	Cu.Ft.
61 - 24 x 24 SQ	<b>639</b>	<b>833</b>	<b>988</b>	47	7.2
61 - 24 x 48 RE	<b>800</b>	<b>1014</b>	<b>1232</b>	64	18
61 - 30 x 30 SQ	<b>746</b>	<b>887</b>	<b>1052</b>	57	13.5
61 - 22 DIA	<b>799</b>	<b>1159</b>	<b>1363</b>	47	7.2



### Corner and Spacer Connecting Tables

Model	Laminate PVF/SE	Laminate HB Edge	Veneer HB Edge	Weight	Cu.Ft.
61RC - 28 x 28 <i>Radius Corner Table</i>	<b>832</b>	<b>1116</b>	<b>1308</b>	42	2
61SC - 28 x 28 <i>Square Corner Table</i>	<b>909</b>	<b>1104</b>	<b>1218</b>	46	2
61TC - 45 degree <i>Corner Table</i>	<b>832</b>	<b>1116</b>	<b>1308</b>	40	2
61ST - 21 x 24 <i>Spacer Table</i>	<b>565</b>	<b>797</b>	<b>913</b>	27	2
61ET - 21 x 24 <i>End Table</i>	<b>754</b>	<b>986</b>	<b>1103</b>	37	2

