



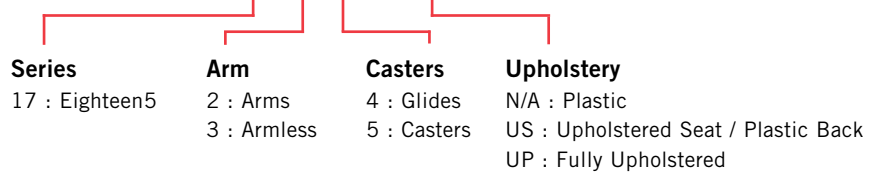
EIGHTEEN5 Nesting Series



PLACING AN ORDER IS EASY

PRODUCT CODE

17 2 5 - US



OPTIONS

UPHOLSTERY



Plastic



Upholstered Seat



Fully Upholstered

FOOT



Glide



Casters

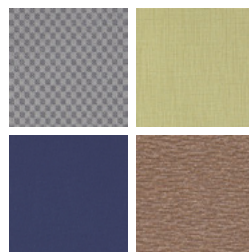
FINISHES

FRAME



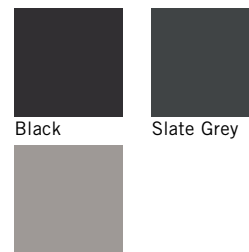
Select from one of our 76 standard Spectone colors

FABRIC



Select fabrics from one of our textile partners

PLASTIC



Black

Slate Grey

Light Grey



EIGHTEEN5 Nesting Series

Plastic Seat and Back

Standard Features

- Plastic seat and back
- 0.875" diameter, 11 gauge frame
- Black nylon arms
- Frame in any Spectone color
- Black glass-filled nylon arms with inner steel support
- Ships 4/carton

Options

- For Soft Wheel casters, specify suffix SC and add \$20 List
- Specify shell finish. Choose from Black RAL 9005, Light Grey RAL 7037 or Slate Grey RAL 7043
- CAL 133



EIGHTEEN5 – With Glides

MODEL	PRICE
1724	408
1734	373

Dimensions (inches)					
seat H	18	seat W	18.5	seat D	18
total H	32	total W	25.25	total D	21.5
				arm H	25.5

Exceeds BIFMA Seating Durability Test to 500 lbs
CAL 133, add \$96 List



1724
With arms
19 lbs



1734
Without arms
16 lbs

EIGHTEEN5 – With Casters

MODEL	PRICE
1725	408
1735	373

Dimensions (inches)					
seat H	18	seat W	18.5	seat D	18
total H	32	total W	25.25	total D	21.5
				arm H	25.5

Exceeds BIFMA Seating Durability Test to 500 lbs
CAL 133, add \$96 List



1725
With arms
19 lbs



1735
Without arms
16 lbs



EIGHTEEN5 Nesting Series

Upholstered Seat and Plastic Back

Standard Features

- Upholstered seat and plastic back
- 0.875" diameter, 11 gauge frame
- Black nylon arms
- Frame in any Spectone color
- Black glass-filled nylon arms with inner steel support
- Ships 4/carton

Options

- For Soft Wheel casters, specify suffix SC and add \$20 List
- Specify back finish. Choose from Black RAL 9005, Light Grey RAL 7037 or Slate Grey RAL 7043
- Antibacterial and antimicrobial fabrics available
- CAL 133



EIGHTEEN5 – With Glides

COM 0.35 yd
0.35 yd COM per single seat

MODEL	COM	GR1	GR2	GR3	GR4	GR5	GR6
1724-US	469	485	490	503	519	533	549
1734-US	434	451	456	468	484	497	515

Dimensions (inches)

seat H	18	seat W	18.5	seat D	18	arm H	25.5
total H	32	total W	25.25	total D	21.5		

Exceeds BIFMA Seating Durability Test to 500 lbs
CAL 133, add \$106 List
1/2" extra seat foam, specify and add \$14 List



1724-US
With arms
19 lbs



1734-US
Without arms
16 lbs

EIGHTEEN5 – With Casters

COM 0.35 yd
0.35 yd COM per single seat

MODEL	COM	GR1	GR2	GR3	GR4	GR5	GR6
1725-US	469	485	490	503	519	533	549
1735-US	434	451	456	468	484	497	515

Dimensions (inches)

seat H	18	seat W	18.5	seat D	18	arm H	25.5
total H	32	total W	25.25	total D	21.5		

Exceeds BIFMA Seating Durability Test to 500 lbs
CAL 133, add \$106 List
1/2" extra seat foam, specify and add \$14 List



1725-US
With arms
19 lbs



1735-US
Without arms
16 lbs



EIGHTEEN5 Nesting Series

Upholstered Seat and Back

Standard Features

- Upholstered seat and back
- 0.875" diameter, 11 gauge frame
- Black nylon arms
- Frame in any Spectone color
- Black glass-filled nylon arms with inner steel support
- Ships 4/carton

Options

- For Soft Wheel casters, specify suffix SC and add \$20 List
- Antibacterial and antimicrobial fabrics available
- Different fabric on seat and back at no upcharge
- CAL 133



Eighteen5 – With Glides

COM 0.7 yd
 0.35 yd COM per single seat
 0.35 yd COM per single back

MODEL	COM	GR1	GR2	GR3	GR4	GR5	GR6
1724-UP	479	515	527	553	589	617	654
1734-UP	444	480	492	518	555	582	620

Dimensions (inches)

seat H	18	seat W	18.5	seat D	18	arm H	25.5
total H	32	total W	25.25	total D	21.5		

Exceeds BIFMA Seating Durability Test to 500 lbs
 CAL 133, add \$115 List
 1/2" extra seat foam, specify and add \$14 List



1724-UP
 With arms
 19 lbs



1734-UP
 Without arms
 16 lbs

Eighteen5 – With Casters

COM 0.7 yd
 0.35 yd COM per single seat
 0.35 yd COM per single back

MODEL	COM	GR1	GR2	GR3	GR4	GR5	GR6
1725-UP	479	515	527	553	589	617	654
1735-UP	444	480	492	518	555	582	620

Dimensions (inches)

seat H	18	seat W	18.5	seat D	18	arm H	25.5
total H	32	total W	25.25	total D	21.5		

Exceeds BIFMA Seating Durability Test to 500 lbs
 CAL 133, add \$115 List
 1/2" extra seat foam, specify and add \$14 List



1725-UP
 With arms
 19 lbs



1735-UP
 Without arms
 16 lbs