



Pricing March 1, 2019  
Discount 57.7% from List prices



SIN 711-18

# EIGHTEEN5 Nesting Series



## PRODUCT CODE

**17 2 5 - US**

### Series

17 : Eighteen5

### Arm

2 : Arms  
3 : Armless

### Casters

4 : Glides  
5 : Casters

### Upholstery

N/A : Plastic  
US : Upholstered Seat / Plastic Back  
UP : Fully Upholstered



## OPTIONS

### UPHOLSTERY



Plastic



Upholstered Seat



Fully Upholstered

### FOOT



Glide



Casters

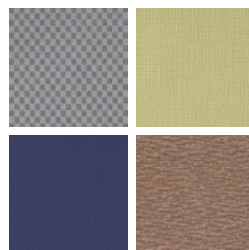
## FINISHES

### FRAME



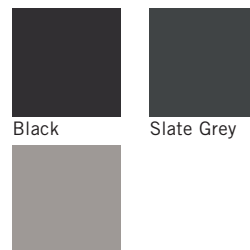
Select from one of our 76 standard Spectone colors

### FABRIC



Select fabrics from one of our textile partners

### PLASTIC



Black

Slate Grey

Light Grey

See Spectone Card or [specfurniture.com/materials/finishes](http://specfurniture.com/materials/finishes) for a complete list of finish options and colors.



Pricing March 1, 2019  
Discount 57.7% from List prices



SIN 711-18

# EIGHTEEN5 Nesting Series

## HOW TO ORDER



### Specify Model

- A** Specify Seat Type and Finish  
*For Upholstered Seat: Manufacturer, Pattern Name, Color*  
*For Plastic Seat: Color*  
*Plastic Underside: Color*
- B** Specify Back Type and Finish  
*For Upholstered Back: Manufacturer, Pattern Name, Color*  
*For Plastic Back: Color*
- C** Specify Frame Finish

Optional: CAL 133, 1/2" Extra Foam, Soft Wheel Casters



Model	Seat Type and Finish	Back Type and Finish	Frame Finish
1725	Plastic, Slate Grey, Slate Grey	Plastic, Slate Grey	Silver



Pricing March 1, 2019  
Discount 57.7% from List prices



SIN 711-18

# EIGHTEEN5 Nesting Series

## Plastic Seat and Back

### Standard Features

- Plastic seat and back
- 0.875" diameter, 11 gauge frame
- Black nylon arms
- Frame in any Spectone color
- Black arms with inner steel support
- Ships 4/carton

### Options

- For Soft Wheel casters, specify suffix SC and add \$20 List to the chair with casters
- Specify shell finish. Choose from Black RAL 9005, Light Grey RAL 7037 or Slate Grey RAL 7043
- CAL 133



### EIGHTEEN5 – With Glides

MODEL	PRICE
<b>1724</b>	<b>514</b>
<b>1734</b>	<b>471</b>

#### Dimensions (inches)

seat H	18	seat W	18.5	seat D	18	arm H	25.5
total H	32	total W	23.5	total W (no arms)	22	total D	21.5

Exceeds BIFMA Seating Durability Test to 500 lbs  
CAL 133, add \$99 List



**1724**  
With arms  
18 lbs



**1734**  
Without arms  
16 lbs

### EIGHTEEN5 – With Casters

MODEL	PRICE
<b>1725</b>	<b>514</b>
<b>1735</b>	<b>471</b>

#### Dimensions (inches)

seat H	18	seat W	18.5	seat D	18	arm H	25.5
total H	32	total W	23.5	total W (no arms)	22	total D	21.5

Exceeds BIFMA Seating Durability Test to 500 lbs  
CAL 133, add \$99 List



**1725**  
With arms  
18 lbs



**1735**  
Without arms  
16 lbs



Pricing March 1, 2019  
Discount 57.7% from List prices



SIN 711-18

# EIGHTEEN5 Nesting Series

Upholstered Seat and Plastic Back

## Standard Features

- Upholstered seat and plastic back
- 0.875" diameter, 11 gauge frame
- Black nylon arms
- Frame in any Spectone color
- Black arms with inner steel support
- Ships 4/carton

## Options

- For Soft Wheel casters, specify suffix SC and add \$20 List to the chair with casters
- Specify back finish. Choose from Black RAL 9005, Light Grey RAL 7037 or Slate Grey RAL 7043
- Antibacterial and antimicrobial fabrics available
- CAL 133



## Eighteen5 – With Glides

COM 0.35 yd  
0.35 yd COM per single seat

MODEL	COM	GR1	GR2	GR3	GR4	GR5	GR6
1724-US	589	607	612	624	641	654	673
1734-US	546	564	570	581	597	612	629

Dimensions (inches)

seat H	18	seat W	18.5	seat D	18	arm H	25.5
total H	32	total W	23.5	total W (no arms)	22	total D	21.5

Exceeds BIFMA Seating Durability Test to 500 lbs  
CAL 133, add \$109 List  
1/2" extra seat foam, specify and add \$14 List



**1724-US**  
With arms  
22 lbs



**1734-US**  
Without arms  
19 lbs

## Eighteen5 – With Casters

COM 0.35 yd  
0.35 yd COM per single seat

MODEL	COM	GR1	GR2	GR3	GR4	GR5	GR6
1725-US	589	607	612	624	641	654	673
1735-US	546	564	570	581	597	612	629

Dimensions (inches)

seat H	18	seat W	18.5	seat D	18	arm H	25.5
total H	32	total W	23.5	total W (no arms)	22	total D	21.5

Exceeds BIFMA Seating Durability Test to 500 lbs  
CAL 133, add \$109 List  
1/2" extra seat foam, specify and add \$14 List



**1725-US**  
With arms  
22 lbs



**1735-US**  
Without arms  
19 lbs



# EIGHTEEN5 Nesting Series

## Upholstered Seat and Back

### Standard Features

- Upholstered seat and back
- 0.875" diameter, 11 gauge frame
- Black nylon arms
- Frame in any Spectone color
- Black arms with inner steel support
- Ships 4/carton

### Options

- For Soft Wheel casters, specify suffix SC and add \$20 List to the chair with casters
- Antibacterial and antimicrobial fabrics available
- Different fabric on seat and back at no upcharge
- CAL 133



### Eighteen5 – With Glides

COM 0.7 yd  
0.35 yd COM per single seat  
0.35 yd COM per single back

MODEL	COM	GR1	GR2	GR3	GR4	GR5	GR6
1724-UP	599	637	649	676	713	741	780
1734-UP	557	593	607	632	671	697	736

#### Dimensions (inches)

seat H	18	seat W	18.5	seat D	18	arm H	25.5
total H	32	total W	23.5	total W (no arms)	22	total D	21.5

Exceeds BIFMA Seating Durability Test to 500 lbs  
CAL 133, add \$119 List  
1/2" extra seat foam, specify and add \$14 List



**1724-UP**  
With arms  
22 lbs



**1734-UP**  
Without arms  
19 lbs

### Eighteen5 – With Casters

COM 0.7 yd  
0.35 yd COM per single seat  
0.35 yd COM per single back

MODEL	COM	GR1	GR2	GR3	GR4	GR5	GR6
1725-UP	599	637	649	676	713	741	780
1735-UP	557	593	607	632	671	697	736

#### Dimensions (inches)

seat H	18	seat W	18.5	seat D	18	arm H	25.5
total H	32	total W	23.5	total W (no arms)	22	total D	21.5

Exceeds BIFMA Seating Durability Test to 500 lbs  
CAL 133, add \$119 List  
1/2" extra seat foam, specify and add \$14 List



**1725-UP**  
With arms  
22 lbs



**1735-UP**  
Without arms  
19 lbs