



EIGHTEEN5 Nesting Series



PRODUCT CODE

17 2 5 - US

Series

17 : Eighteen5

Arm

2 : Arms
3 : Armless

Casters

4 : Glides
5 : Casters

Upholstery

N/A : Plastic
US : Upholstered Seat / Plastic Back
UP : Fully Upholstered



OPTIONS

UPHOLSTERY



Plastic



Upholstered Seat



Fully Upholstered

FOOT



Glide



Casters

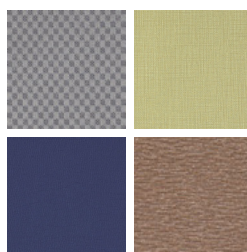
FINISHES

FRAME



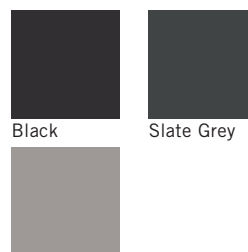
Select from one of our 76 standard Spectone colors

FABRIC



Select fabrics from one of our textile partners

PLASTIC



Black

Slate Grey

Light Grey

See Spectone Card or specfurniture.com/materials/finishes for a complete list of finish options and colors.



EIGHTEEN5 Nesting Series

HOW TO ORDER



Specify Model

- A** Specify Seat Type and Finish
For Upholstered Seat: Manufacturer, Pattern Name, Color
For Plastic Seat: Color
Plastic Underside: Color
- B** Specify Back Type and Finish
For Upholstered Back: Manufacturer, Pattern Name, Color
For Plastic Back: Color
- C** Specify Frame Finish

Optional: CAL 133, 1/2" Extra Foam, Soft Wheel Casters



Model	Seat Type and Finish	Back Type and Finish	Frame Finish
1725	Plastic, Slate Grey, Slate Grey	Plastic, Slate Grey	Silver



EIGHTEEN5 Nesting Series

Plastic Seat and Back

Standard Features

- Plastic seat and back
- 0.875" diameter, 11 gauge frame
- Black nylon arms
- Frame in any Spectone color
- Black arms with inner steel support
- Ships 4/carton

Options

- For Soft Wheel casters, specify suffix SC and add \$20 List to the chair with casters
- Specify shell finish. Choose from Black RAL 9005, Light Grey RAL 7037 or Slate Grey RAL 7043
- CAL 133



EIGHTEEN5 – With Glides

MODEL	PRICE
1724	514
1734	471

Dimensions (inches)

seat H	18	seat W	18.5	seat D	18	arm H	25.5		
total H	32	total W	23.5	total W (no arms)	22	total D	21.5		

Exceeds BIFMA Seating Durability Test to 500 lbs
 CAL 133, add \$99 List



1724
With arms
 18 lbs



1734
Without arms
 16 lbs

EIGHTEEN5 – With Casters

MODEL	PRICE
1725	514
1735	471

Dimensions (inches)

seat H	18	seat W	18.5	seat D	18	arm H	25.5		
total H	32	total W	23.5	total W (no arms)	22	total D	21.5		

Exceeds BIFMA Seating Durability Test to 500 lbs
 CAL 133, add \$99 List



1725
With arms
 18 lbs



1735
Without arms
 16 lbs



EIGHTEEN5 Nesting Series

Upholstered Seat and Plastic Back

Standard Features

- Upholstered seat and plastic back
- 0.875" diameter, 11 gauge frame
- Black nylon arms
- Frame in any Spectone color
- Black arms with inner steel support
- Ships 4/carton

Options

- For Soft Wheel casters, specify suffix SC and add \$20 List to the chair with casters
- Specify back finish. Choose from Black RAL 9005, Light Grey RAL 7037 or Slate Grey RAL 7043
- Antibacterial and antimicrobial fabrics available
- CAL 133



EIGHTEEN5 – With Glides

COM 0.35 yd
0.35 yd COM per single seat

MODEL	COM	GR1	GR2	GR3	GR4	GR5	GR6
1724-US	589	607	612	624	641	654	673
1734-US	546	564	570	581	597	612	629

Dimensions (inches)

seat H	18	seat W	18.5	seat D	18	arm H	25.5
total H	32	total W	23.5	total W (no arms)	22	total D	21.5

Exceeds BIFMA Seating Durability Test to 500 lbs
CAL 133, add \$109 List
1/2" extra seat foam, specify and add \$14 List



1724-US
With arms
22 lbs



1734-US
Without arms
19 lbs

EIGHTEEN5 – With Casters

COM 0.35 yd
0.35 yd COM per single seat

MODEL	COM	GR1	GR2	GR3	GR4	GR5	GR6
1725-US	589	607	612	624	641	654	673
1735-US	546	564	570	581	597	612	629

Dimensions (inches)

seat H	18	seat W	18.5	seat D	18	arm H	25.5
total H	32	total W	23.5	total W (no arms)	22	total D	21.5

Exceeds BIFMA Seating Durability Test to 500 lbs
CAL 133, add \$109 List
1/2" extra seat foam, specify and add \$14 List



1725-US
With arms
22 lbs



1735-US
Without arms
19 lbs



EIGHTEEN5 Nesting Series

Upholstered Seat and Back

Standard Features

- Upholstered seat and back
- 0.875" diameter, 11 gauge frame
- Black nylon arms
- Frame in any Spectone color
- Black arms with inner steel support
- Ships 4/carton

Options

- For Soft Wheel casters, specify suffix SC and add \$20 List to the chair with casters
- Antibacterial and antimicrobial fabrics available
- Different fabric on seat and back at no upcharge
- CAL 133



Eighteen5 – With Glides

COM 0.7 yd
 0.35 yd COM per single seat
 0.35 yd COM per single back

MODEL	COM	GR1	GR2	GR3	GR4	GR5	GR6
1724-UP	599	637	649	676	713	741	780
1734-UP	557	593	607	632	671	697	736

Dimensions (inches)

seat H	18	seat W	18.5	seat D	18	arm H	25.5
total H	32	total W	23.5	total W (no arms)	22	total D	21.5

Exceeds BIFMA Seating Durability Test to 500 lbs
 CAL 133, add \$119 List
 1/2" extra seat foam, specify and add \$14 List



1724-UP
 With arms
 22 lbs



1734-UP
 Without arms
 19 lbs

Eighteen5 – With Casters

COM 0.7 yd
 0.35 yd COM per single seat
 0.35 yd COM per single back

MODEL	COM	GR1	GR2	GR3	GR4	GR5	GR6
1725-UP	599	637	649	676	713	741	780
1735-UP	557	593	607	632	671	697	736

Dimensions (inches)

seat H	18	seat W	18.5	seat D	18	arm H	25.5
total H	32	total W	23.5	total W (no arms)	22	total D	21.5

Exceeds BIFMA Seating Durability Test to 500 lbs
 CAL 133, add \$119 List
 1/2" extra seat foam, specify and add \$14 List



1725-UP
 With arms
 22 lbs



1735-UP
 Without arms
 19 lbs