

HARDI Behavioral Health Series



PRODUCT CODE

8701

Series

- 8701 : Hardi Dining, Armless
- 8708 : Hardi Dining, with Arms
- 8801 : Hardi Lounge, Armless
- 8808 : Hardi Lounge, with Arms
- 8840 : Hardi Rocker
- 8901 : Hardi Stool

OPTIONS

GLIDES



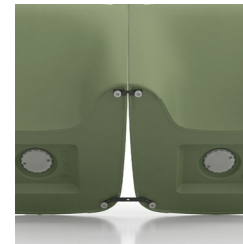
ADDITIONAL WEIGHT



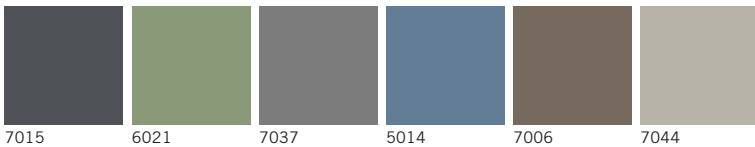
FLOOR MOUNT



GANGING



FINISHES



Select from 6 standard colors. Custom colors may be available based on quantity. Contact Customer Service.

HOW TO ORDER



Specify Model

A Specify Shell Color

Optional: Non-removable Glides, Ganging, Floor Mounting Straps

Model	Shell Color
8701	RAL 5014



HARDI Behavioral Health Series

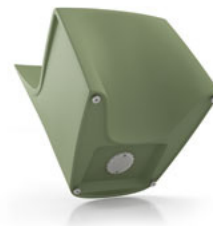
For warmth, strength and sustainability

Standard Features

- Single roto-molded design
- CAL 133 compliant
- Select from 6 standard colors, which have been selected from our palette of standard Spectone finishes
- No protruding legs or hardware
- Standard without glides
- Dining ships 1/carton 14 cu ft, Lounge ships 1/carton 16 cu ft
- Removable threaded cap is fastened with tamperproof fasteners. Sand (not included) can be added on site for additional weight and ballast utilizing the plastic bag from packaging. Contact Customer Service for more information

Options

- Nickel-plated non-removable nylon glides secured with LOCTITE®, add \$16 List
- Ganging kit available, call Customer Service
- Floor mounting straps available, call Customer Service



Dining

MODEL	Price
8701	483
8708	587

Dimensions (inches)

seat H	18.0	seat W	20.0	arm H	26.0	total H	33.0
depth	24.0	total W (no arms)	22.0	total W (arms)	24.0		

Exceeds BIFMA Seating Durability Test to 500 lbs



8701
Without arms
23 lbs



8708
With arms
28 lbs

Lounge

MODEL	Price
8801	551
8808	655

Dimensions (inches)

seat H	17.25	seat W	23.0	arm H	25.0	total H	29.50
depth	27.0	total W (no arms)	26.0	total W (arms)	27.0		

Exceeds BIFMA Seating Durability Test to 500 lbs



8801
Without arms
25 lbs



8808
With arms
31 lbs



HARDI Behavioral Health Series

For warmth, strength and sustainability

Standard Features

- Single roto-molded design
- CAL 133 compliant
- Select from 6 standard colors, which have been selected from our palette of standard Spectone finishes
- No protruding legs or hardware
- Rocker ships 1/carton 26 cu ft
- Removable threaded cap is fastened with tamperproof fasteners. Sand (not included) can be added on site for additional weight and ballast utilizing the plastic bag from packaging. Contact Customer Service for more information



Rocker

MODEL	Price
8840	1136

Dimensions (inches)

seat H	18.25	seat W	20.0	arm H	25.0	total H	37.5
depth	33.75	total W	28.0				

Exceeds BIFMA Seating Durability Test to 500 lbs



8840
36 lbs

HARDI Behavioral Health Series

For warmth, strength and sustainability

Standard Features

- Single roto-molded design
- CAL 133 compliant
- Select from 6 standard colors, which have been selected from our palette of standard Spectone finishes
- No protruding legs or hardware
- Standard without glides
- Stool ships 1/carton 4 cu ft
- Removable threaded cap is fastened with tamperproof fasteners. Sand (not included) can be added on site for additional weight and ballast utilizing the plastic bag from packaging. Contact Customer Service for more information

Options

- Nickel-plated non-removable nylon glides secured with LOCTITE®, add \$16 List
- Floor mounting straps available, call Customer Service



Stool

MODEL	Price
8901	364

Dimensions (inches)

seat H	18.0	seat W	16.0
total H	18.0	total W	17.5

Exceeds BIFMA Seating Durability Test to 500 lbs



8901
10 lbs