



# HARDI Behavioral Health Series



## PRODUCT CODE

**8701**

### Series

- 8701 : Hardi Dining, Armless
- 8702 : Hardi Children's, Dining, Armless
- 8708 : Hardi Dining, with Arms
- 8801 : Hardi Lounge, Armless
- 8808 : Hardi Lounge, with Arms
- 8809 : Hardi Club **NEW**
- 8840 : Hardi Rocker
- 8901 : Hardi Stool



## OPTIONS

### GLIDES



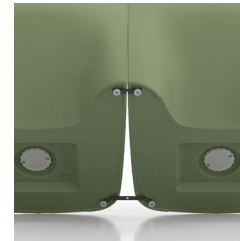
### ADDITIONAL WEIGHT



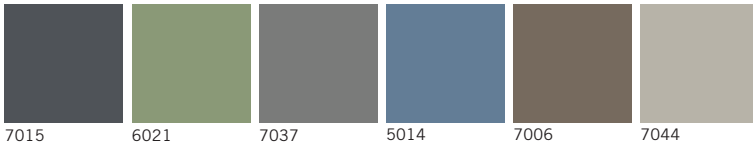
### FLOOR MOUNT



### GANGING



## FINISHES



Select from 6 standard colors. Custom colors may be available based on quantity. Contact Customer Service.

## HOW TO ORDER



### Specify Model

**A** Specify Shell Color

Optional: Non-removable Glides, Ganging, Floor Mounting Straps

Model	Shell Color
8701	RAL 5014

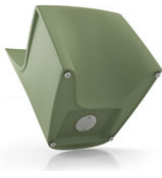


# HARDI Behavioral Health Series

For warmth, strength and sustainability

## Standard Features

- Single roto-molded design
- CAL 133 compliant
- Select from 6 standard colors, which have been selected from our palette of standard Spectone finishes
- No protruding legs or hardware
- Standard without glides
- Dining ships 1/carton 14 cu ft, Lounge ships 1/carton 16 cu ft
- Removable threaded cap is fastened with tamperproof fasteners. Sand (not included) can be added on site for additional weight and ballast utilizing the plastic bag from packaging. Contact Customer Service for more information



## Options

- Four nickel-plated non-removable nylon glides secured with LOCTITE®, add \$20 List
- Ganging is available. Please specify a set of nickel-plated non-removable nylon glides secured with LOCTITE for each chair that you want to gang together (\$20 List per chair), and add Q-1 ganging kits (\$36 List). In other words, to gang 9 chairs together, please order 9 sets of glides and 8 ganging kits.
- Floor mounting is available. Please specify a set of nickel-plated non-removable nylon glides secured with LOCTITE for each chair that you want to mount to the floor (\$20 List per chair), and add the same amount of floor mounting kits (\$36 List). In other words, to floor mount 9 chairs, please order 9 sets of glides and 9 floor mounting kits.



## Dining

MODEL	Price
<b>8701</b>	<b>531</b>
<b>8708</b>	<b>610</b>

### Dimensions (inches)

seat H	18.0	seat W	20.0	arm H	26.0	total H	33.0
depth	24.0	total W (no arms)	22.0	total W (arms)	24.0		

Meets BIFMA Seating Durability Test to 500 lbs



**8701**  
Without arms  
23 lbs



**8708**  
With arms  
28 lbs

## Lounge

MODEL	Price
<b>8801</b>	<b>573</b>
<b>8808</b>	<b>681</b>

### Dimensions (inches)

seat H	17.25	seat W	23.0	arm H	25.0	total H	29.50
depth	27.0	total W (no arms)	26.0	total W (arms)	27.0		

Meets BIFMA Seating Durability Test to 500 lbs



**8801**  
Without arms  
25 lbs



**8808**  
With arms  
31 lbs



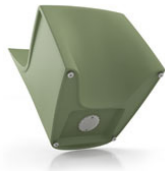
Shipping Jan 1, 2021

# HARDI Behavioral Health Series **NEW**

For warmth, strength and sustainability

## Standard Features

- Single roto-molded design
- Select from 6 standard colors, which have been selected from our palette of standard Spectone finishes
- No protruding legs or hardware
- Standard without glides
- Dining ships 1/carton 14 cu ft, Lounge ships 1/carton 16 cu ft
- Removable threaded cap is fastened with tamperproof fasteners. Sand (not included) can be added on site for additional weight and ballast utilizing the plastic bag from packaging. Contact Customer Service for more information



## Options

- Four nickel-plated non-removable nylon glides secured with LOCTITE®, add \$20 List
- Ganging is available. Please specify a set of nickel-plated non-removable nylon glides secured with LOCTITE for each chair that you want to gang together (\$20 List per chair), and add Q-1 ganging kits (\$36 List). In other words, to gang 9 chairs together, please order 9 sets of glides and 8 ganging kits.
- Floor mounting is available. Please specify a set of nickel-plated non-removable nylon glides secured with LOCTITE for each chair that you want to mount to the floor (\$20 List per chair), and add the same amount of floor mounting kits (\$36 List). In other words, to floor mount 9 chairs, please order 9 sets of glides and 9 floor mounting kits.



## Club

MODEL **8809** Price **Coming Soon**

Dimensions (inches)

seat H	17.25	seat W	23.0	arm H	25.0	total H	29.50
depth	27.0	total W	27.0				

Meets BIFMA Seating Durability Test to 500 lbs



**NEW**

**8809**  
**Club**  
32 lbs



# HARDI Behavioral Health Series

For warmth, strength and sustainability

## Standard Features

- Single roto-molded design
- CAL 133 compliant
- Select from 6 standard colors, which have been selected from our palette of standard Spectone finishes
- No protruding legs or hardware
- Rocker ships 1/carton 26 cu ft
- Removable threaded cap is fastened with tamperproof fasteners. Sand (not included) can be added on site for additional weight and ballast utilizing the plastic bag from packaging. Contact Customer Service for more information



---

## Rocker

---

MODEL	Price
<b>8840</b>	<b>1181</b>

### Dimensions (inches)

seat H	18.25	seat W	20.0	arm H	25.0	total H	37.5
depth	33.75	total W	28.0				

Meets BIFMA Seating Durability Test to 500 lbs



**8840**  
36 lbs



# HARDI Behavioral Health Series

For warmth, strength and sustainability

## Standard Features

- Single roto-molded design
- CAL 133 compliant
- Select from 6 standard colors, which have been selected from our palette of standard Spectone finishes
- No protruding legs or hardware
- Standard without glides
- Stool ships 1/carton 4 cu ft
- Removable threaded cap is fastened with tamperproof fasteners. Sand (not included) can be added on site for additional weight and ballast utilizing the plastic bag from packaging. Contact Customer Service for more information

## Options

- Nickel-plated non-removable nylon glides secured with LOCTITE®, add \$20 List
- Floor mounting is available. Please specify a set of nickel-plated non-removable nylon glides secured with LOCTITE for each stool that you want to mount to the floor (\$20 List per stool), and add the same amount of floor mounting kits (\$36 List). In other words, to floor mount 9 stool, please order 9 sets of glides and 9 floor mounting kits.



---

## Stool

---

MODEL	Price
<b>8901</b>	<b>379</b>

### Dimensions (inches)

seat H	18.0	seat W	16.0
total H	18.0	total W	17.5

Meets BIFMA Seating Durability Test to 500 lbs



**8901**  
10 lbs



# HARDI CHILDREN'S Behavioral Health Series

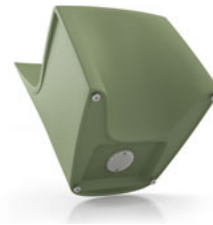
For warmth, strength and sustainability

## Standard Features

- Single roto-molded design
- Select from 6 standard colors, which have been selected from our palette of standard Spectone finishes
- No protruding legs or hardware
- Standard without glides
- Ships 1/carton 6 cu ft
- Removable threaded cap is fastened with tamperproof fasteners. Sand (not included) can be added on site for additional weight and ballast utilizing the plastic bag from packaging. Contact Customer Service for more information

## Options

- Nickel-plated non-removable nylon glides secured with LOCTITE®, add \$20 List
- Floor mounting is available. Please specify a set of nickel-plated non-removable nylon glides secured with LOCTITE for each chair that you want to mount to the floor (\$20 List per chair), and add the same amount of floor mounting kits (\$36 List). In other words, to floor mount 9 chairs, please order 9 sets of glides and 9 floor mounting kits.



## Children's Dining

MODEL	Price
<b>8702</b>	<b>495</b>

### Dimensions (inches)

seat H	15.0	seat W	18.0	total H	27.0
depth	20.5	total W (no arms)	18.0		

Meets BIFMA Seating Durability Test to 500 lbs



**8702**  
Without arms  
15.5 lbs