



Pricing January 1, 2020
Discount 57.7% from List prices



HARDI Behavioral Health Series



PRODUCT CODE

8701

Series

- 8701 : Hardi Dining, Armless
- 8708 : Hardi Dining, with Arms
- 8801 : Hardi Lounge, Armless
- 8808 : Hardi Lounge, with Arms
- 8840 : Hardi Rocker
- 8901 : Hardi Stool



OPTIONS

GLIDES



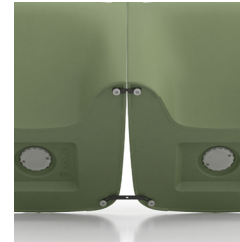
ADDITIONAL WEIGHT



FLOOR MOUNT



GANGING



FINISHES



7015

6021

7037

5014

7006

7044

Select from 6 standard colors. Custom colors may be available based on quantity. Contact Customer Service.

HOW TO ORDER



Specify Model

A Specify Shell Color

Optional: Non-removable Glides, Ganging, Floor Mounting Straps

Model	Shell Color
8701	RAL 5014

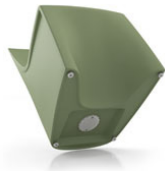


HARDI Behavioral Health Series

For warmth, strength and sustainability

Standard Features

- Single roto-molded design
- CAL 133 compliant
- Select from 6 standard colors, which have been selected from our palette of standard Spectone finishes
- No protruding legs or hardware
- Standard without glides
- Dining ships 1/carton 14 cu ft, Lounge ships 1/carton 16 cu ft
- Removable threaded cap is fastened with tamperproof fasteners. Sand (not included) can be added on site for additional weight and ballast utilizing the plastic bag from packaging. Contact Customer Service for more information



Options

- Four nickel-plated non-removable nylon glides secured with LOCTITE®, add \$20 List
- Ganging is available. Please specify a set of nickel-plated non-removable nylon glides secured with LOCTITE for each chair that you want to gang together (\$20 List per chair), and add Q-1 ganging kits (\$36 List). In other words, to gang 9 chairs together, please order 9 sets of glides and 8 ganging kits.
- Floor mounting is available. Please specify a set of nickel-plated non-removable nylon glides secured with LOCTITE for each chair that you want to mount to the floor (\$20 List per chair), and add the same amount of floor mounting kits (\$36 List). In other words, to floor mount 9 chairs, please order 9 sets of glides and 9 floor mounting kits.



Dining

MODEL	Price
8701	584
8708	659

Dimensions (inches)

seat H	18.0	seat W	20.0	arm H	26.0	total H	33.0
depth	24.0	total W (no arms)	22.0	total W (arms)	24.0		

Exceeds BIFMA Seating Durability Test to 500 lbs



8701
Without arms
23 lbs



8708
With arms
28 lbs

Lounge

MODEL	Price
8801	631
8808	738

Dimensions (inches)

seat H	17.25	seat W	23.0	arm H	25.0	total H	29.50
depth	27.0	total W (no arms)	26.0	total W (arms)	27.0		

Exceeds BIFMA Seating Durability Test to 500 lbs



8801
Without arms
25 lbs



8808
With arms
31 lbs



Pricing January 1, 2020
Discount 57.7% from List prices



SIN 71-315

HARDI Behavioral Health Series

For warmth, strength and sustainability

Standard Features

- Single roto-molded design
- CAL 133 compliant
- Select from 6 standard colors, which have been selected from our palette of standard Spectone finishes
- No protruding legs or hardware
- Rocker ships 1/carton 26 cu ft
- Removable threaded cap is fastened with tamperproof fasteners. Sand (not included) can be added on site for additional weight and ballast utilizing the plastic bag from packaging. Contact Customer Service for more information



Rocker

MODEL	Price
8840	1258

Dimensions (inches)

seat H	18.25	seat W	20.0	arm H	25.0	total H	37.5
depth	33.75	total W	28.0				

Exceeds BIFMA Seating Durability Test to 500 lbs



8840
36 lbs



Pricing January 1, 2020
Discount 57.7% from List prices



OPEN MARKET

HARDI Behavioral Health Series

For warmth, strength and sustainability

Standard Features

- Single roto-molded design
- CAL 133 compliant
- Select from 6 standard colors, which have been selected from our palette of standard Spectone finishes
- No protruding legs or hardware
- Standard without glides
- Stool ships 1/carton 4 cu ft
- Removable threaded cap is fastened with tamperproof fasteners. Sand (not included) can be added on site for additional weight and ballast utilizing the plastic bag from packaging. Contact Customer Service for more information

Options

- Four nickel-plated non-removable nylon glides secured with LOCTITE®, add \$20 List
- Floor mounting is available. Please specify a set of nickel-plated non-removable nylon glides secured with LOCTITE for each stool that you want to mount to the floor (\$20 List per stool), and add the same amount of floor mounting kits (\$36 List).

In other words, to floor mount 9 stools, please order 9 sets of glides and 9 floor mounting kits.



Stool

MODEL	Price
8901	417

Dimensions (inches)

seat H	18.0	seat W	16.0
total H	18.0	total W	17.5

Exceeds BIFMA Seating Durability Test to 500 lbs



8901
10 lbs



Pricing January 1, 2020
Discount 57.7% from List prices



Shipping
Jan 1, 2020

OPEN MARKET

HARDI CHILDREN'S Behavioral Health Series

For warmth, strength and sustainability

Standard Features

- Single roto-molded design
- Select from 6 standard colors, which have been selected from our palette of standard Spectone finishes
- No protruding legs or hardware
- Standard without glides
- Ships 1/carton 6 cu ft
- Removable threaded cap is fastened with tamperproof fasteners. Sand (not included) can be added on site for additional weight and ballast utilizing the plastic bag from packaging. Contact Customer Service for more information

Options

- Nickel-plated non-removable nylon glides secured with LOCTITE®, add \$20 List
- Floor mounting is available. Please specify a set of nickel-plated non-removable nylon glides secured with LOCTITE for each chair that you want to mount to the floor (\$20 List per chair), and add the same amount of floor mounting kits (\$36 List). In other words, to floor mount 9 chairs, please order 9 sets of glides and 9 floor mounting kits.



Children's Dining

MODEL	Price
8702	550

Dimensions (inches)

seat H	15.0	seat W	18.0	total H	27.0
depth	20.5	total W (no arms)	18.0		

Exceeds BIFMA Seating Durability Test to 500 lbs



8702
Without arms
19 lbs