

# HEAVY DUTY Specialty Seating



## PRODUCT CODE

**4201M HD**

Product Code

Specification  
HD: Heavy Duty\*



\*The code for our heavy duty seating options featured in the pages below is the same as a regular model of the chair you are specifying. By adding the letters "HD" at the end of the product code, it lets us know the product is intended for a behavioral health environment and the features below will automatically be specified.

## FEATURES

**Tamper-Proof**



**Weighted**



**LOCTITE®-secured Glides**



**Secured Zippers**



**Springless Seat Cushion**



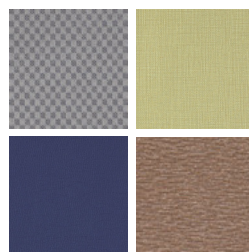
## FINISHES

**FRAME**



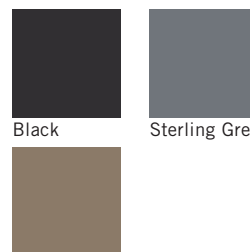
Select from one of our 76 standard Spectone colors

**FABRIC**



Select fabrics from one of our textile partners

**ARMS**



Taupe



# HEAVY DUTY Specialty Seating

## CALVIN HD

### Standard Features

- Separate seat and back
- Polyurethane arms
- Fully welded
- Added weight, Sled base
- Frame in any Spectone color
- Injection molded plastic glides secured with LOCTITE®
- Tamperproof hardware
- Ships assembled
- Ships 1/carton 15 cu ft, bariatric ships 1/carton 20 cu ft

### Options

- Polyurethane arms are available in Black, Sterling Grey and Taupe (RAL 7006)
- CAL 133

Contact Spec Customer Service to railroad fabrics (specify repeat info and yardage requirement will be provided) and for repeats greater than 5" x 5"



### Calvin Heavy Duty Single Seater with arms

COM 1.75 yds  
0.75 yd COM per single seat  
1.0 yd COM per single back

MODEL	COM	GR 1	GR 2	GR 3	GR 4	GR 5	GR 6
<b>8101MHD</b>	<b>1378</b>	<b>1478</b>	<b>1509</b>	<b>1578</b>	<b>1679</b>	<b>1756</b>	<b>1859</b>

#### Dimensions (inches)

seat H	18.0	seat W	21.0	arm H	25.0
total H	33.75	total W	25.0	depth	26.0

Exceeds BIFMA Seating Durability Test to 500 lbs per chair  
CAL 133, add \$115 List per chair



**8101MHD**  
64 lbs

### Calvin Heavy Duty Bariatric with arms

COM 3.0 yds  
1.5 yd COM per single seat  
1.5 yd COM per single back

MODEL	COM	GR 1	GR 2	GR 3	GR 4	GR 5	GR 6
<b>8101GHD</b>	<b>1689</b>	<b>1860</b>	<b>1914</b>	<b>2031</b>	<b>2205</b>	<b>2337</b>	<b>2514</b>

#### Dimensions (inches)

seat H	18.0	seat W	30.0	arm H	25.0
total H	33.75	total W	34.0	depth	26.0

Exceeds BIFMA Seating Durability Test to 750 lbs per seat  
CAL 133, add \$144 List per chair



**8101GHD**  
74 lbs



Pricing March 1, 2019  
Discount 57.7% from List prices



SIN 711-16

# HEAVY DUTY Specialty Seating COMPANION HD

## Standard Features

- Separate seat and back
- Polyurethane arms
- Fully welded 1.75" frame
- Added weight, Sled base
- Frame in any Spectone color
- Steel glides secured with LOCTITE®
- Tamperproof hardware
- Zippered covers glued shut, pulls removed
- Ships assembled
- Medium Back ships 1/carton 15 cu ft
- Highback ships 1/carton 19 cu ft

## Options

- Polyurethane arms are available in Black, Sterling Grey and Taupe (RAL 7006)
- Floor mounting glides, add \$46 List/chair
- CAL 133

Contact Spec™ Customer Service to railroad fabrics (specify repeat info and yardage requirement will be provided) and for repeats greater than 5" x 5"



## Companion Medium Back armless – Sled Base

COM 2.0 yds  
1.0 yd COM per single seat  
1.0 yd COM per single back

MODEL	COM	GR 1	GR 2	GR 3	GR 4	GR 5	GR 6
<b>4101MHD</b>	<b>1235</b>	<b>1345</b>	<b>1380</b>	<b>1456</b>	<b>1564</b>	<b>1648</b>	<b>1760</b>

Dimensions (inches)

seat H	18.0	seat W	21.0				
total H	32.5	total W	25.0	depth	27.0		

Exceeds BIFMA Seating Durability Test to 500 lbs per chair  
CAL 133, add \$104 List per chair



**4101MHD**  
65 lbs

## Companion Medium Back with arms – Sled Base

COM 2.0 yds  
1.0 yd COM per single seat  
1.0 yd COM per single back

MODEL	COM	GR 1	GR 2	GR 3	GR 4	GR 5	GR 6
<b>4201MHD</b>	<b>1449</b>	<b>1559</b>	<b>1594</b>	<b>1670</b>	<b>1778</b>	<b>1861</b>	<b>1973</b>

For steel arms add suffix S and \$67

Dimensions (inches)

seat H	18.0	seat W	21.0	arm H	27.0		
total H	32.5	total W	26.0	depth	27.0		

Exceeds BIFMA Seating Durability Test to 500 lbs per seat  
CAL 133, add \$104 List per chair



**4201MHD**  
65 lbs



# HEAVY DUTY Specialty Seating COMPANION HD

## Standard Features

- Separate seat and back
- Polyurethane arms
- Fully welded 1.75" frame
- Added weight, Sled base
- Frame in any Spectone color
- Steel glides secured with LOCTITE®
- Tamperproof hardware
- Zippered covers glued shut, pulls removed
- Ships assembled
- Medium Back ships 1/carton 15 cu ft
- Highback ships 1/carton 19 cu ft

## Options

- Polyurethane arms are available in Black, Sterling Grey and Taupe (RAL 7006)
- Floor mounting glides, add \$46 List/chair
- CAL 133

Contact Spec Customer Service to railroad fabrics (specify repeat info and yardage requirement will be provided) and for repeats greater than 5" x 5"



## Companion Highback with arms – Sled Base

COM 2.25 yds  
1.0 yd COM per single seat  
1.25 yd COM per single back

MODEL	COM	GR 1	GR 2	GR 3	GR 4	GR 5	GR 6
<b>4201HHD</b>	<b>1507</b>	<b>1627</b>	<b>1670</b>	<b>1750</b>	<b>1873</b>	<b>1964</b>	<b>2086</b>

For steel arms add suffix S and \$67

Dimensions (inches)

seat H	18.0	seat W	21.0	arm H	27.0
total H	45.0	total W	26.0	depth	27.0

Exceeds BIFMA Seating Durability Test to 500 lbs per seat  
CAL 133, add \$129 List per chair



**4201HHD**  
71 lbs

## Companion Bariatric with arms – Sled Base

COM 3.25 yds  
1.5 yd COM per single seat  
1.75 yd COM per single back

MODEL	COM	GR 1	GR 2	GR 3	GR 4	GR 5	GR 6
<b>4201GHD</b>	<b>1771</b>	<b>1936</b>	<b>1989</b>	<b>2103</b>	<b>2264</b>	<b>2392</b>	<b>2559</b>

For steel arms add suffix S and \$67

Dimensions (inches)

seat H	18.0	seat W	30.0	arm H	27.0
total H	32.5	total W	35.0	depth	27.0

Exceeds BIFMA Seating Durability Test to 750 lbs per seat  
CAL 133, add \$157 List per chair



**4201GHD**  
78 lbs



# HEAVY DUTY Specialty Seating COOPER DWIGHT HD

## Standard Features

- Separate seat and back
- Laminate or upholstered side panels on inside and outside of arm in various combinations
- Upholstered side panels can match or contrast seat/back
- Select from 15 standard laminates or choose any standard Wilsonart, Nevamar, Formica, Arborite and Pionite matte finish laminates at no upcharge.
- Fully welded frame with 1.625" steel legs and 1.25" steel tubular sleds
- Frame in any Spectone color
- Steel glides secured with LOCTITE®
- Replaceable seats
- No protruding legs or hardware
- Tamper proof fastenings
- Ships assembled, 1/carton 15 cu ft

## Options

- Wood or polyurethane arm caps, in flat (WF or PF) or rounded (WR or PR) profile
- Wood arm caps in Beech, in any of 9 standard stains or stain-to-match at no upcharge
- Round polyurethane arm caps available in Black, Sterling Grey and Taupe (RAL 7006)
- Flat polyurethane arm caps available in Black only
- KYDEX® flat arms available in Black (B) or Taupe RAL 7006 (T) or Sterling Grey (G)
- Floor mounting straps available, call Customer Service
- Additional weight may be available, call Customer Service
- Antibacterial and antimicrobial fabrics available
- Different fabric on seat and back at no upcharge
- CAL 133

Contact Spec™ Customer Service to railroad fabrics (specify repeat info and yardage requirement will be provided) and for repeats greater than 5" x 5"



## Single Seater with arms

COM 1.75 yds

0.75 yd COM per single seat / 1.0 yd COM per single back

MODEL	COM	GR 1	GR 2	GR 3	GR 4	GR 5	GR 6
<b>6101MHD-LL</b>	<b>1323</b>	<b>1421</b>	<b>1454</b>	<b>1522</b>	<b>1623</b>	<b>1702</b>	<b>1804</b>

Side panel – laminated, outside and inside

CAL 133, add \$115 List per chair

COM 2.5 yds

0.75 yd COM per single seat / 1.0 yd COM per single back / 0.375 yd COM per panel

MODEL	COM	GR 1	GR 2	GR 3	GR 4	GR 5	GR 6
<b>6101MHD-LU</b>	<b>1392</b>	<b>1531</b>	<b>1576</b>	<b>1672</b>	<b>1813</b>	<b>1922</b>	<b>2065</b>

Side panel – laminated, outside, upholstered inside

CAL 133, add \$196 List per chair

COM 2.5 yds

0.75 yd COM per single seat / 1.0 yd COM per single back / 0.375 yd COM per panel

MODEL	COM	GR 1	GR 2	GR 3	GR 4	GR 5	GR 6
<b>6101MHD-UL</b>	<b>1392</b>	<b>1531</b>	<b>1576</b>	<b>1672</b>	<b>1813</b>	<b>1922</b>	<b>2065</b>

Side panel – upholstered outside, laminated inside

CAL 133, add \$196 List per chair

COM 3.25 yds

0.75 yd COM per single seat / 1.0 yd COM per single back / 0.75 yd COM per panel

MODEL	COM	GR 1	GR 2	GR 3	GR 4	GR 5	GR 6
<b>6101MHD-UU</b>	<b>1429</b>	<b>1607</b>	<b>1666</b>	<b>1789</b>	<b>1970</b>	<b>2110</b>	<b>2295</b>

Side panel – upholstered, outside and inside

CAL 133, add \$273 List per chair

Dimensions (inches)

seat H	18.0	seat W	21.0	arm H	25.0
total H	33.75	total W	25.25	depth	25.0

**For KYDEX® flat arms add suffix K and \$264**

Dynamic load tested to 500 lbs per chair



**6101MHD-LL**  
75 lbs



# HEAVY DUTY Specialty Seating COOPER DWIGHT HD

## Standard Features

- Separate seat and back
- Laminate or upholstered side panels on inside and outside of arm in various combinations
- Upholstered side panels can match or contrast seat/back
- Select from 15 standard laminates or choose any standard Wilsonart, Nevamar, Formica, Arborite and Pionite matte finish laminates at no upcharge.
- Fully welded frame with 1.625" steel legs and 1.25" steel tubular sleds
- Frame in any Spectone color
- Steel glides secured with LOCTITE®
- Replaceable seats
- No protruding legs or hardware
- Tamper proof fastenings
- Ships assembled, 1/carton 15 cu ft

## Options

- Wood or polyurethane arm caps, in flat (WF or PF) or rounded (WR or PR) profile
- Wood arm caps in Beech, in any of 9 standard stains or stain-to-match at no upcharge
- Round polyurethane arm caps available in Black, Sterling Grey and Taupe (RAL 7006)
- Flat polyurethane arm caps available in Black only
- KYDEX® flat arms available in Black (B) or Taupe RAL 7006 (T) or Sterling Grey (G)
- Floor mounting straps available, call Customer Service
- Additional weight may be available, call Customer Service
- Antibacterial and antimicrobial fabrics available
- Different fabric on seat and back at no upcharge
- CAL 133

Contact Spec Customer Service to railroad fabrics (specify repeat info and yardage requirement will be provided) and for repeats greater than 5" x 5"



## Single Seater with no arms

COM 1.75 yds

0.75 yd COM per single seat / 1.0 yd COM per single back

MODEL	COM	GR 1	GR 2	GR 3	GR 4	GR 5	GR 6
<b>6101MHD-LL-N</b>	<b>1281</b>	<b>1380</b>	<b>1413</b>	<b>1481</b>	<b>1582</b>	<b>1660</b>	<b>1762</b>

Side panel – laminated, outside and inside

CAL 133, add \$115 List per chair

COM 2.5 yds

0.75 yd COM per single seat / 1.0 yd COM per single back / 0.375 yd COM per panel

MODEL	COM	GR 1	GR 2	GR 3	GR 4	GR 5	GR 6
<b>6101MHD-LU-N</b>	<b>1340</b>	<b>1468</b>	<b>1509</b>	<b>1598</b>	<b>1727</b>	<b>1827</b>	<b>1959</b>

Side panel – laminated, outside, upholstered inside

CAL 133, add \$196 List per chair

COM 2.5 yds

0.75 yd COM per single seat / 1.0 yd COM per single back / 0.375 yd COM per panel

MODEL	COM	GR 1	GR 2	GR 3	GR 4	GR 5	GR 6
<b>6101MHD-UL-N</b>	<b>1340</b>	<b>1468</b>	<b>1509</b>	<b>1598</b>	<b>1727</b>	<b>1827</b>	<b>1959</b>

Side panel – upholstered outside, laminated inside

CAL 133, add \$196 List per chair

COM 3.25 yds

0.75 yd COM per single seat / 1.0 yd COM per single back / 0.75 yd COM per panel

MODEL	COM	GR 1	GR 2	GR 3	GR 4	GR 5	GR 6
<b>6101MHD-UU-N</b>	<b>1377</b>	<b>1533</b>	<b>1584</b>	<b>1691</b>	<b>1850</b>	<b>1972</b>	<b>2133</b>

Side panel – upholstered, outside and inside

CAL 133, add \$273 List per chair

Dimensions (inches)

seat H	18.0	seat W	21.0	arm H	20.0
total H	33.75	total W	25.25	depth	25.0

**For KYDEX® flat arms add suffix K and \$264**

Dynamic load tested to 500 lbs per chair



**6101MHD-LL-N**  
70 lbs



# HEAVY DUTY Specialty Seating DIGNITY

## Standard Features

- Separate seat and back
- Self-skinned polyurethane perimeter arms
- Upholstered side panels can match or contrast seat/back
- Laminate or upholstered side panels on inside and outside of arm
- Select from 15 standard laminates or choose any standard Wilsonart, Nevamar, Formica, Arborite and Pionite matte finish laminates at no upcharge.
- No protruding legs or hardware
- Tamper proof fastenings
- Non-removable steel levelling glides
- Ships assembled
- Ships 1/carton 15 cu ft

Contact Spec Customer Service to railroad fabrics (specify repeat info and yardage requirement will be provided) and for repeats greater than 5" x 5"

## Options

- Specify frame finish, Black (B), Sterling Grey (G) or Taupe RAL 7006 (T)
- Add up to 20 lbs of additional weight per seat, add \$156 List per seat
- Non-standard laminates, contact Spec for pricing
- Antibacterial and antimicrobial fabrics available
- Floor mounting straps available, call Customer Service
- Connecting and freestanding tables
- CAL 133
- Elimination of separated seat and back available with either solid or perforated seat pan, call Customer Service



## Single Seater with arms

COM 1.75 yds

0.75 yd COM per single seat / 1.0 yd COM per single back

MODEL	COM	GR 1	GR 2	GR 3	GR 4	GR 5	GR 6
<b>4501M-LL</b>	<b>1417</b>	<b>1507</b>	<b>1536</b>	<b>1594</b>	<b>1682</b>	<b>1749</b>	<b>1836</b>

Arm panel – laminated, outside and inside

CAL 133, add \$115 List per chair



**4501M**  
95 lbs

COM 2.75 yds

0.75 yd COM per single seat / 1.0 yd COM per single back / .5 yd COM per panel

MODEL	COM	GR 1	GR 2	GR 3	GR 4	GR 5	GR 6
<b>4501M-LU</b>	<b>1530</b>	<b>1669</b>	<b>1714</b>	<b>1807</b>	<b>1945</b>	<b>2047</b>	<b>2187</b>

Arm panel – laminated, outside, upholstered inside

CAL 133, add \$196 List per chair

COM 2.75 yds

0.75 yd COM per single seat / 1.0 yd COM per single back / .5 yd COM per panel

MODEL	COM	GR 1	GR 2	GR 3	GR 4	GR 5	GR 6
<b>4501M-UL</b>	<b>1530</b>	<b>1669</b>	<b>1714</b>	<b>1807</b>	<b>1945</b>	<b>2047</b>	<b>2187</b>

Arm panel – upholstered outside, laminated inside

CAL 133, add \$196 List per chair

COM 3.75 yds

0.75 yd COM per single seat / 1.0 yd COM per single back / 1.0 yd COM per panel

MODEL	COM	GR 1	GR 2	GR 3	GR 4	GR 5	GR 6
<b>4501M-UU</b>	<b>1641</b>	<b>1831</b>	<b>1892</b>	<b>2019</b>	<b>2205</b>	<b>2348</b>	<b>2536</b>

Arm panel – upholstered, outside and inside

CAL 133, add \$273 List per chair

Dimensions (inches)

seat H	18.0	seat W	23.0	arm H	25.25
total H	32.75	total W	29.0	depth	29.75

Exceeds BIFMA Seating Durability Test to 500 lbs per chair



# HEAVY DUTY Specialty Seating DIGNITY

## Standard Features

- Separate seat and back
- Self-skinned polyurethane perimeter arms
- Upholstered side panels can match or contrast seat/back
- Laminate or upholstered side panels on inside and outside of arm
- Select from 15 standard laminates or choose any standard Wilsonart, Nevamar, Formica, Arborite and Pionite matte finish laminates at no upcharge.
- No protruding legs or hardware
- Tamper proof fastenings
- Non-removable steel levelling glides
- Ships assembled
- Ships 1/carton 26 cu ft

Contact Spec Customer Service to railroad fabrics (specify repeat info and yardage requirement will be provided) and for repeats greater than 5" x 5"

## Options

- Specify frame finish, Black (B), Sterling Grey (G) or Taupe RAL 7006 (T)
- Add up to 20 lbs of additional weight per seat, add \$156 List per seat
- Non-standard laminates, contact Spec for pricing
- Antibacterial and antimicrobial fabrics available
- Floor mounting straps available, call Customer Service
- Connecting and freestanding tables
- CAL 133
- Elimination of separated seat and back available with either solid or perforated seat pan, call Customer Service



## Two Seater with outside arms

COM 3.5 yds

0.75 yd COM per single seat / 1.0 yd COM per single back

MODEL	COM	GR 1	GR 2	GR 3	GR 4	GR 5	GR 6
<b>4502M-LL</b>	<b>2083</b>	<b>2259</b>	<b>2316</b>	<b>2434</b>	<b>2610</b>	<b>2741</b>	<b>2918</b>

Arm panel – laminated, outside and inside

CAL 133, add \$230 List per two seater

COM 4.5 yds

0.75 yd COM per single seat / 1.0 yd COM per single back / .5 yd COM per panel

MODEL	COM	GR 1	GR 2	GR 3	GR 4	GR 5	GR 6
<b>4502M-LU</b>	<b>2194</b>	<b>2421</b>	<b>2497</b>	<b>2645</b>	<b>2873</b>	<b>3043</b>	<b>3268</b>

Arm panel – laminated, outside, upholstered inside

CAL 133, add \$311 List per two seater

COM 4.5 yds

0.75 yd COM per single seat / 1.0 yd COM per single back / .5 yd COM per panel

MODEL	COM	GR 1	GR 2	GR 3	GR 4	GR 5	GR 6
<b>4502M-UL</b>	<b>2194</b>	<b>2421</b>	<b>2497</b>	<b>2645</b>	<b>2873</b>	<b>3043</b>	<b>3268</b>

Arm panel – upholstered outside, laminated inside

CAL 133, add \$311 List per two seater

COM 5.5 yds

0.75 yd COM per single seat / 1.0 yd COM per single back / 1.0 yd COM per panel

MODEL	COM	GR 1	GR 2	GR 3	GR 4	GR 5	GR 6
<b>4502M-UU</b>	<b>2305</b>	<b>2583</b>	<b>2674</b>	<b>2858</b>	<b>3133</b>	<b>3341</b>	<b>3621</b>

Arm panel – upholstered, outside and inside

CAL 133, add \$392 List per two seater

Dimensions (inches)

seat H	18.0	seat W	46.0	arm H	25.25
total H	32.75	total W	52.0	depth	29.75

Exceeds BIFMA Seating Durability Test to 750 lbs per two seater



**4502M**  
150 lbs





Pricing March 1, 2019  
Discount 57.7% from List prices



SIN 711-17

# HEAVY DUTY Specialty Seating DIGNITY

## Standard Features

- Separate seat and back
- Self-skinned polyurethane perimeter arms
- Upholstered side panels can match or contrast seat/back
- Laminate or upholstered side panels on inside and outside of arm
- Select from 15 standard laminates or choose any standard Wilsonart, Nevamar, Formica, Arborite and Pionite matte finish laminates at no upcharge.
- No protruding legs or hardware
- Tamper proof fastenings
- Non-removable steel levelling glides
- Ships assembled
- Ships 1/carton 39 cu ft

Contact Spec Customer Service to railroad fabrics (specify repeat info and yardage requirement will be provided) and for repeats greater than 5" x 5"

## Options

- Specify frame finish, Black (B), Sterling Grey (G) or Taupe RAL 7006 (T)
- Add up to 20 lbs of additional weight per seat, add \$156 List per seat
- Non-standard laminates, contact Spec for pricing
- Antibacterial and antimicrobial fabrics available
- Floor mounting straps available, call Customer Service
- Connecting and freestanding tables
- CAL 133
- Elimination of separated seat and back available with either solid or perforated seat pan, call Customer Service



## Three Seater with outside arms

COM 5.25 yds

0.75 yd COM per single seat / 1.0 yd COM per single back

MODEL	COM	GR 1	GR 2	GR 3	GR 4	GR 5	GR 6
<b>4503M-LL</b>	<b>2746</b>	<b>3012</b>	<b>3100</b>	<b>3275</b>	<b>3538</b>	<b>3737</b>	<b>4002</b>

Arm panel – laminated, outside and inside

CAL 133, add \$345 List per three seater



**4503M**  
205 lbs

COM 6.25 yds

0.75 yd COM per single seat / 1.0 yd COM per single back / .5 yd COM per panel

MODEL	COM	GR 1	GR 2	GR 3	GR 4	GR 5	GR 6
<b>4503M-LU</b>	<b>2857</b>	<b>3173</b>	<b>3277</b>	<b>3488</b>	<b>3801</b>	<b>4036</b>	<b>4352</b>

Arm panel – laminated, outside, upholstered inside

CAL 133, add \$426 List per three seater

COM 6.25 yds

0.75 yd COM per single seat / 1.0 yd COM per single back / .5 yd COM per panel

MODEL	COM	GR 1	GR 2	GR 3	GR 4	GR 5	GR 6
<b>4503M-UL</b>	<b>2857</b>	<b>3173</b>	<b>3277</b>	<b>3488</b>	<b>3801</b>	<b>4036</b>	<b>4352</b>

Arm panel – upholstered outside, laminated inside

CAL 133, add \$426 List per three seater

COM 7.25 yds

0.75 yd COM per single seat / 1.0 yd COM per single back / 1.0 yd COM per panel

MODEL	COM	GR 1	GR 2	GR 3	GR 4	GR 5	GR 6
<b>4503M-UU</b>	<b>2969</b>	<b>3337</b>	<b>3457</b>	<b>3700</b>	<b>4061</b>	<b>4336</b>	<b>4704</b>

Arm panel – upholstered, outside and inside

CAL 133, add \$507 List per three seater

Dimensions (inches)

seat H	18.0	seat W	69.0	arm H	25.25
total H	32.75	total W	75.0	depth	29.75

Exceeds BIFMA Seating Durability Test to 1000 lbs per three seater



# HEAVY DUTY Specialty Seating DIGNITY

## Standard Features

- Separate seat and back
- Self-skinned polyurethane perimeter arms
- Upholstered side panels can match or contrast seat/back
- Laminate or upholstered side panels on inside and outside of arm
- Select from 15 standard laminates or choose any standard Wilsonart, Nevamar, Formica, Arborite and Pionite matte finish laminates at no upcharge.
- No protruding legs or hardware
- Tamper proof fastenings
- Non-removable steel levelling glides
- Ships assembled
- Ships 1/carton 20 cu ft

Contact Spec Customer Service to railroad fabrics (specify repeat info and yardage requirement will be provided) and for repeats greater than 5" x 5"

## Options

- Specify frame finish, Black (B), Sterling Grey (G) or Taupe RAL 7006 (T)
- Add up to 20 lbs of additional weight per seat, add \$156 List per seat
- Non-standard laminates, contact Spec for pricing
- Antibacterial and antimicrobial fabrics available
- Floor mounting straps available, call Customer Service
- Connecting and freestanding tables
- CAL 133
- Elimination of separated seat and back available with either solid or perforated seat pan, call Customer Service



## Bariatric Single Seater with arms

COM 3.25 yds

1.5 yd COM per single seat / 1.75 yd COM per single back

MODEL	COM	GR 1	GR 2	GR 3	GR 4	GR 5	GR 6
<b>4501G-LL</b>	<b>1834</b>	<b>1999</b>	<b>2052</b>	<b>2161</b>	<b>2324</b>	<b>2448</b>	<b>2612</b>

Arm panel – laminated, outside and inside

CAL 133, add \$148 List per chair



**4501G**  
113 lbs

COM 4.25 yds

1.5 yd COM per single seat / 1.75 yd COM per single back / .5 yd COM per panel

MODEL	COM	GR 1	GR 2	GR 3	GR 4	GR 5	GR 6
<b>4501G-LU</b>	<b>1946</b>	<b>2161</b>	<b>2231</b>	<b>2372</b>	<b>2585</b>	<b>2745</b>	<b>2960</b>

Arm panel – laminated, outside, upholstered inside

CAL 133, add \$224 List per chair

COM 4.25 yds

1.5 yd COM per single seat / 1.75 yd COM per single back / .5 yd COM per panel

MODEL	COM	GR 1	GR 2	GR 3	GR 4	GR 5	GR 6
<b>4501G-UL</b>	<b>1946</b>	<b>2161</b>	<b>2231</b>	<b>2372</b>	<b>2585</b>	<b>2745</b>	<b>2960</b>

Arm panel – upholstered outside, laminated inside

CAL 133, add \$224 List per chair

COM 5.25 yds

1.5 yd COM per single seat / 1.75 yd COM per single back / 1.0 yd COM per panel

MODEL	COM	GR 1	GR 2	GR 3	GR 4	GR 5	GR 6
<b>4501G-UU</b>	<b>2058</b>	<b>2323</b>	<b>2410</b>	<b>2585</b>	<b>2849</b>	<b>3048</b>	<b>3314</b>

Arm panel – upholstered, outside and inside

CAL 133, add \$300 List per chair

Dimensions (inches)

seat H	18.0	seat W	30.25	arm H	25.25
total H	32.75	total W	36.25	depth	29.75

Exceeds BIFMA Seating Durability Test to 750 lbs per chair



Pricing March 1, 2019  
Discount 57.7% from List prices



SIN 711-19

# HEAVY DUTY Specialty Seating DIGNITY

## Standard Features

- Black finish only
- 6" soft wheel casters
- Standard Dolly holds 1 single seat chair
- Ships 1/carton, 17 cu. ft.
- Ships assembled



## Dignity - Dolly

Description	Model	Price	Weight
Single Seat Dolly	<b>DIGN-99</b>	<b>536</b>	<b>12lb</b>

### Dimensions (inches)

height	39.0
width	23.0
depth	30.0





# HEAVY DUTY Specialty Seating DIGNITY2

## Standard Features

- Separate seat and back
- Arm caps available in wood, or polyurethane
- Laminate or upholstered side panels on inside and outside of arm in various combinations
- Upholstered side panels can match or contrast seat/back
- Select from 15 standard laminates or choose any standard Wilsonart, Nevamar, Formica, Arborite and Pionite matte finish laminates at no upcharge.
- Sculpted steel leg in any Spectone finish
- No protruding legs or hardware
- Tamper proof fastenings
- Non-removable steel levelling glides
- Ships assembled
- Ships 1/carton 15 cu ft

Contact Spec Customer Service to railroad fabrics (specify repeat info and yardage requirement will be provided) and for repeats greater than 5" x 5"

## Options

- Polyurethane arm caps available in Black (B) or Taupe RAL 7006 (T) or Sterling Grey (G)
- For wood arm caps, select from 9 standard stains, or stain-to-match at no upcharge
- KYDEX® arm caps available in Black (B) or Taupe RAL 7006 (T) or Sterling Grey (G)
- Thermofoil side panels on inside and outside of arm, call Customer Service for pricing and finishes
- Add up to 20 lbs of additional weight per seat, add \$156 List per seat
- Non-standard laminates, contact Spec for pricing
- Antibacterial and antimicrobial fabrics available
- Floor mounting straps available, call Customer Service
- Connecting and freestanding tables
- CAL 133
- Elimination of separated seat and back available with either solid or perforated seat pan, call Customer Service



## Single Seater with arms

COM 1.75 yds

0.75 yd COM per single seat / 1.0 yd COM per single back

MODEL	COM	GR 1	GR 2	GR 3	GR 4	GR 5	GR 6
<b>4601M-LL</b>	<b>1417</b>	<b>1507</b>	<b>1536</b>	<b>1594</b>	<b>1682</b>	<b>1749</b>	<b>1836</b>

Side panel – laminated, outside and inside

CAL 133, add \$115 List per chair

COM 2.75 yds

0.75 yd COM per single seat / 1.0 yd COM per single back / .5 yd COM per panel

MODEL	COM	GR 1	GR 2	GR 3	GR 4	GR 5	GR 6
<b>4601M-LU</b>	<b>1530</b>	<b>1669</b>	<b>1714</b>	<b>1807</b>	<b>1945</b>	<b>2047</b>	<b>2187</b>

Side panel – laminated, outside, upholstered inside

CAL 133, add \$196 List per chair

COM 2.75 yds

0.75 yd COM per single seat / 1.0 yd COM per single back / .5 yd COM per panel

MODEL	COM	GR 1	GR 2	GR 3	GR 4	GR 5	GR 6
<b>4601M-UL</b>	<b>1530</b>	<b>1669</b>	<b>1714</b>	<b>1807</b>	<b>1945</b>	<b>2047</b>	<b>2187</b>

Side panel – upholstered outside, laminated inside

CAL 133, add \$196 List per chair

COM 3.75 yds

0.75 yd COM per single seat / 1.0 yd COM per single back / 1.0 yd COM per panel

MODEL	COM	GR 1	GR 2	GR 3	GR 4	GR 5	GR 6
<b>4601M-UU</b>	<b>1641</b>	<b>1831</b>	<b>1892</b>	<b>2019</b>	<b>2205</b>	<b>2348</b>	<b>2536</b>

Side panel – upholstered, outside and inside

CAL 133, add \$273 List per chair

Dimensions (inches)

seat H	18.0	seat W	23.0	arm H	26.0
total H	31.75	total W	28.5	depth	30.0

**For KYDEX® arms add suffix K and \$252**  
**Dynamic load tested to 500 lbs per chair**



**4601M**  
95 lbs



# HEAVY DUTY Specialty Seating DIGNITY2

## Standard Features

- Separate seat and back
- Arm caps available in wood, or polyurethane
- Laminate or upholstered side panels on inside and outside of arm in various combinations
- Upholstered side panels can match or contrast seat/back
- Select from 15 standard laminates or choose any standard Wilsonart, Nevamar, Formica, Arborite and Pionite matte finish laminates at no upcharge.
- Sculpted steel leg in any Spectone finish
- No protruding legs or hardware
- Tamper proof fastenings
- Non-removable steel levelling glides
- Ships assembled
- Ships 1/carton 15 cu ft

## Options

- Polyurethane arm caps available in Black (B) or Taupe RAL 7006 (T) or Sterling Grey (G)
- For wood arm caps, select from 9 standard stains, or stain-to-match at no upcharge
- KYDEX® arm caps available in Black (B) or Taupe RAL 7006 (T) or Sterling Grey (G)
- Thermofoil side panels on inside and outside of arm, call Customer Service for pricing and finishes
- Add up to 20 lbs of additional weight per seat, add \$156 List per seat
- Non-standard laminates, contact Spec for pricing
- Antibacterial and antimicrobial fabrics available
- Floor mounting straps available, call Customer Service
- Connecting and freestanding tables
- CAL 133
- Elimination of separated seat and back available with either solid or perforated seat pan, call Customer Service

Contact Spec Customer Service to railroad fabrics (specify repeat info and yardage requirement will be provided) and for repeats greater than 5" x 5"

## Two Seater with outside arms

COM 3.5 yds  
0.75 yd COM per single seat / 1.0 yd COM per single back

MODEL	COM	GR 1	GR 2	GR 3	GR 4	GR 5	GR 6
<b>4602M-LL</b>	<b>2083</b>	<b>2259</b>	<b>2316</b>	<b>2434</b>	<b>2610</b>	<b>2741</b>	<b>2918</b>

Side panel – laminated, outside and inside  
CAL 133, add \$230 List per two seater

COM 4.5 yds  
0.75 yd COM per single seat / 1.0 yd COM per single back / .5 yd COM per panel

MODEL	COM	GR 1	GR 2	GR 3	GR 4	GR 5	GR 6
<b>4602M-UL</b>	<b>2194</b>	<b>2421</b>	<b>2497</b>	<b>2645</b>	<b>2873</b>	<b>3043</b>	<b>3268</b>

Side panel – laminated, outside, upholstered inside  
CAL 133, add \$311 List per two seater

COM 4.5 yds  
0.75 yd COM per single seat / 1.0 yd COM per single back / .5 yd COM per panel

MODEL	COM	GR 1	GR 2	GR 3	GR 4	GR 5	GR 6
<b>4602M-UL</b>	<b>2194</b>	<b>2421</b>	<b>2497</b>	<b>2645</b>	<b>2873</b>	<b>3043</b>	<b>3268</b>

Side panel – upholstered outside, laminated inside  
CAL 133, add \$311 List per two seater

COM 5.5 yds  
0.75 yd COM per single seat / 1.0 yd COM per single back / 1.0 yd COM per panel

MODEL	COM	GR 1	GR 2	GR 3	GR 4	GR 5	GR 6
<b>4602M-UU</b>	<b>2305</b>	<b>2583</b>	<b>2674</b>	<b>2858</b>	<b>3133</b>	<b>3341</b>	<b>3621</b>

Side panel – upholstered, outside and inside  
CAL 133, add \$392 List per two seater

### Dimensions (inches)

seat H	18.0	seat W	45.5	arm H	26.0
total H	31.75	total W	51.0	depth	30.0

For KYDEX® arms add suffix K and \$252  
Dynamic load tested to 750 lbs per two seater



**4602M**  
150 lbs



# HEAVY DUTY Specialty Seating DIGNITY2

## Standard Features

- Separate seat and back
- Arm caps available in wood, or polyurethane
- Laminate or upholstered side panels on inside and outside of arm in various combinations
- Upholstered side panels can match or contrast seat/back
- Select from 15 standard laminates or choose any standard Wilsonart, Nevamar, Formica, Arborite and Pionite matte finish laminates at no upcharge.
- Sculpted steel leg in any Spectone finish
- No protruding legs or hardware
- Tamper proof fastenings
- Non-removable steel levelling glides
- Ships assembled
- Ships 1/carton 15 cu ft

## Options

- Polyurethane arm caps available in Black (B) or Taupe RAL 7006 (T) or Sterling Grey (G)
- For wood arm caps, select from 9 standard stains, or stain-to-match at no upcharge
- KYDEX® arm caps available in Black (B) or Taupe RAL 7006 (T) or Sterling Grey (G)
- Thermofoil side panels on inside and outside of arm, call Customer Service for pricing and finishes
- Add up to 20 lbs of additional weight per seat, add \$156 List per seat
- Non-standard laminates, contact Spec for pricing
- Antibacterial and antimicrobial fabrics available
- Floor mounting straps available, call Customer Service
- Connecting and freestanding tables
- CAL 133
- Elimination of separated seat and back available with either solid or perforated seat pan, call Customer Service

Contact Spec Customer Service to railroad fabrics (specify repeat info and yardage requirement will be provided) and for repeats greater than 5" x 5"

### Three Seater with outside arms

COM 5.25 yds

0.75 yd COM per single seat / 1.0 yd COM per single back

MODEL	COM	GR 1	GR 2	GR 3	GR 4	GR 5	GR 6
<b>4603M-LL</b>	<b>2746</b>	<b>3012</b>	<b>3100</b>	<b>3275</b>	<b>3538</b>	<b>3737</b>	<b>4002</b>

Side panel – laminated, outside and inside

CAL 133, add \$345 List per three seater

COM 6.25 yds

0.75 yd COM per single seat / 1.0 yd COM per single back / .5 yd COM per panel

MODEL	COM	GR 1	GR 2	GR 3	GR 4	GR 5	GR 6
<b>4603M-LU</b>	<b>2857</b>	<b>3173</b>	<b>3277</b>	<b>3488</b>	<b>3801</b>	<b>4036</b>	<b>4352</b>

Side panel – laminated, outside, upholstered inside

CAL 133, add \$426 List per three seater

COM 6.25 yds

0.75 yd COM per single seat / 1.0 yd COM per single back / .5 yd COM per panel

MODEL	COM	GR 1	GR 2	GR 3	GR 4	GR 5	GR 6
<b>4603M-UL</b>	<b>2857</b>	<b>3173</b>	<b>3277</b>	<b>3488</b>	<b>3801</b>	<b>4036</b>	<b>4352</b>

Side panel – upholstered outside, laminated inside

CAL 133, add \$426 List per three seater

COM 7.25 yds

0.75 yd COM per single seat / 1.0 yd COM per single back / 1.0 yd COM per panel

MODEL	COM	GR 1	GR 2	GR 3	GR 4	GR 5	GR 6
<b>4603M-UU</b>	<b>2969</b>	<b>3337</b>	<b>3457</b>	<b>3700</b>	<b>4061</b>	<b>4336</b>	<b>4704</b>

Side panel – upholstered, outside and inside

CAL 133, add \$507 List per three seater

Dimensions (inches)

seat H	18.0	seat W	68.0	arm H	26.0
total H	31.75	total W	74.0	depth	30.0

**For KYDEX® arms add suffix K and \$252**  
**Dynamic load tested to 1000 lbs per three seater**



**4603M**  
205 lbs



# HEAVY DUTY Specialty Seating DIGNITY2

## Standard Features

- Separate seat and back
- Arm caps available in wood, or polyurethane
- Laminate or upholstered side panels on inside and outside of arm in various combinations
- Upholstered side panels can match or contrast seat/back
- Select from 15 standard laminates or choose any standard Wilsonart, Nevamar, Formica, Arborite and Pionite matte finish laminates at no upcharge.
- Sculpted steel leg in any Spectone finish
- No protruding legs or hardware
- Tamper proof fastenings
- Non-removable steel levelling glides
- Ships assembled
- Ships 1/carton 15 cu ft

## Options

- Polyurethane arm caps available in Black (B) or Taupe RAL 7006 (T) or Sterling Grey (G)
- For wood arm caps, select from 9 standard stains, or stain-to-match at no upcharge
- KYDEX® arm caps available in Black (B) or Taupe RAL 7006 (T) or Sterling Grey (G)
- Thermofoil side panels on inside and outside of arm, call Customer Service for pricing and finishes
- Add up to 20 lbs of additional weight per seat, add \$156 List per seat
- Non-standard laminates, contact Spec for pricing
- Antibacterial and antimicrobial fabrics available
- Floor mounting straps available, call Customer Service
- Connecting and freestanding tables
- CAL 133
- Elimination of separated seat and back available with either solid or perforated seat pan, call Customer Service

Contact Spec Customer Service to railroad fabrics (specify repeat info and yardage requirement will be provided) and for repeats greater than 5" x 5"

## Bariatric Single Seater with arms

COM 3.25 yds

1.5 yd COM per single seat / 1.75 yd COM per single back

MODEL	COM	GR 1	GR 2	GR 3	GR 4	GR 5	GR 6
<b>4601G-LL</b>	<b>1834</b>	<b>1999</b>	<b>2052</b>	<b>2161</b>	<b>2324</b>	<b>2448</b>	<b>2612</b>

Side panel – laminated, outside and inside

CAL 133, add \$148 List per chair

COM 4.25 yds

1.5 yd COM per single seat / 1.75 yd COM per single back / .5 yd COM per panel

MODEL	COM	GR 1	GR 2	GR 3	GR 4	GR 5	GR 6
<b>4601G-LU</b>	<b>1946</b>	<b>2161</b>	<b>2231</b>	<b>2372</b>	<b>2585</b>	<b>2745</b>	<b>2960</b>

Side panel – laminated, outside, upholstered inside

CAL 133, add \$224 List per chair

COM 4.25 yds

1.5 yd COM per single seat / 1.75 yd COM per single back / .5 yd COM per panel

MODEL	COM	GR 1	GR 2	GR 3	GR 4	GR 5	GR 6
<b>4601G-UL</b>	<b>1946</b>	<b>2161</b>	<b>2231</b>	<b>2372</b>	<b>2585</b>	<b>2745</b>	<b>2960</b>

Side panel – upholstered outside, laminated inside

CAL 133, add \$224 List per chair

COM 5.25 yds

1.5 yd COM per single seat / 1.75 yd COM per single back / 1.0 yd COM per panel

MODEL	COM	GR 1	GR 2	GR 3	GR 4	GR 5	GR 6
<b>4601G-UU</b>	<b>2058</b>	<b>2323</b>	<b>2410</b>	<b>2585</b>	<b>2849</b>	<b>3048</b>	<b>3314</b>

Side panel – upholstered, outside and inside

CAL 133, add \$300 List per chair

Dimensions (inches)

seat H	18.0	seat W	31.0	arm H	26.0
total H	31.75	total W	36.5	depth	30.0

**For KYDEX® arms add suffix K and \$252**  
**Dynamic load tested to 750 lbs per chair**



**4601G**  
113 lbs



# HEAVY DUTY Specialty Seating DIGNITY2

## Standard Features

- Separate seat and back
- Arm caps available in wood, or polyurethane
- Laminate or upholstered side panels on inside and outside of arm in various combinations
- Upholstered side panels can match or contrast seat/back
- Select from 15 standard laminates or choose any standard Wilsonart, Nevamar, Formica, Arborite and Pionite matte finish laminates at no upcharge.
- Sculpted steel leg in any Spectone finish
- No protruding legs or hardware
- Tamper proof fastenings
- Non-removable steel levelling glides
- Ships assembled
- Ships 1/carton 15 cu ft

## Options

- Polyurethane arm caps available in Black (B) or Taupe RAL 7006 (T) or Sterling Grey (G)
- For wood arm caps, select from 9 standard stains, or stain-to-match at no upcharge
- KYDEX® arm caps available in Black (B) or Taupe RAL 7006 (T) or Sterling Grey (G)
- Thermofoil side panels on inside and outside of arm, call Customer Service for pricing and finishes
- Add up to 20 lbs of additional weight per seat, add \$156 List per seat
- Non-standard laminates, contact Spec for pricing
- Antibacterial and antimicrobial fabrics available
- Floor mounting straps available, call Customer Service
- Connecting and freestanding tables
- CAL 133
- Elimination of separated seat and back available with either solid or perforated seat pan, call Customer Service

Contact Spec Customer Service to railroad fabrics (specify repeat info and yardage requirement will be provided) and for repeats greater than 5" x 5"



## Single Seater with no arms

COM 1.75 yds  
0.75 yd COM per single seat / 1.0 yd COM per single back

MODEL	COM	GR 1	GR 2	GR 3	GR 4	GR 5	GR 6
<b>4601M-LL-N</b>	<b>1397</b>	<b>1485</b>	<b>1514</b>	<b>1573</b>	<b>1661</b>	<b>1727</b>	<b>1816</b>

Side panel – laminated, outside and inside  
CAL 133, add \$115 List per chair

COM 2.75 yds  
0.75 yd COM per single seat / 1.0 yd COM per single back / .5 yd COM per panel

MODEL	COM	GR 1	GR 2	GR 3	GR 4	GR 5	GR 6
<b>4601M-LU-N</b>	<b>1508</b>	<b>1647</b>	<b>1692</b>	<b>1785</b>	<b>1924</b>	<b>2026</b>	<b>2164</b>

Side panel – laminated, outside, upholstered inside  
CAL 133, add \$196 List per chair

COM 2.75 yds  
0.75 yd COM per single seat / 1.0 yd COM per single back / .5 yd COM per panel

MODEL	COM	GR 1	GR 2	GR 3	GR 4	GR 5	GR 6
<b>4601M-UL-N</b>	<b>1508</b>	<b>1647</b>	<b>1692</b>	<b>1785</b>	<b>1924</b>	<b>2026</b>	<b>2164</b>

Side panel – upholstered outside, laminated inside  
CAL 133, add \$196 List per chair

COM 3.75 yds  
0.75 yd COM per single seat / 1.0 yd COM per single back / 1.0 yd COM per panel

MODEL	COM	GR 1	GR 2	GR 3	GR 4	GR 5	GR 6
<b>4601M-UU-N</b>	<b>1619</b>	<b>1810</b>	<b>1872</b>	<b>1997</b>	<b>2185</b>	<b>2326</b>	<b>2515</b>

Side panel – upholstered, outside and inside  
CAL 133, add \$273 List per chair

Dimensions (inches)

seat H	18.0	seat W	23.0	arm H	17.5
total H	31.75	total W	28.5	depth	30.0

**For KYDEX® arms add suffix K and \$252**  
**Dynamic load tested to 500 lbs per chair**



**4601M-N**  
95 lbs





# HEAVY DUTY Specialty Seating DIGNITY2

## Standard Features

- Separate seat and back
- Arm caps available in wood, or polyurethane
- Laminate or upholstered side panels on inside and outside of arm in various combinations
- Upholstered side panels can match or contrast seat/back
- Select from 15 standard laminates or choose any standard Wilsonart, Nevamar, Formica, Arborite and Pionite matte finish laminates at no upcharge.
- Sculpted steel leg in any Spectone finish
- No protruding legs or hardware
- Tamper proof fastenings
- Non-removable steel levelling glides
- Ships assembled
- Ships 1/carton 15 cu ft

## Options

- Polyurethane arm caps available in Black (B) or Taupe RAL 7006 (T) or Sterling Grey (G)
- For wood arm caps, select from 9 standard stains, or stain-to-match at no upcharge
- KYDEX® arm caps available in Black (B) or Taupe RAL 7006 (T) or Sterling Grey (G)
- Thermofoil side panels on inside and outside of arm, call Customer Service for pricing and finishes
- Add up to 20 lbs of additional weight per seat, add \$156 List per seat
- Non-standard laminates, contact Spec for pricing
- Antibacterial and antimicrobial fabrics available
- Floor mounting straps available, call Customer Service
- Connecting and freestanding tables
- CAL 133
- Elimination of separated seat and back available with either solid or perforated seat pan, call Customer Service

Contact Spec Customer Service to railroad fabrics (specify repeat info and yardage requirement will be provided) and for repeats greater than 5" x 5"

## Two Seater with no arms

COM 3.5 yds  
0.75 yd COM per single seat / 1.0 yd COM per single back

MODEL	COM	GR 1	GR 2	GR 3	GR 4	GR 5	GR 6
<b>4602M-LL-N</b>	<b>2060</b>	<b>2238</b>	<b>2296</b>	<b>2413</b>	<b>2587</b>	<b>2720</b>	<b>2896</b>

Side panel – laminated, outside and inside  
CAL 133, add \$230 List per two seater

COM 4.5 yds  
0.75 yd COM per single seat / 1.0 yd COM per single back / .5 yd COM per panel

MODEL	COM	GR 1	GR 2	GR 3	GR 4	GR 5	GR 6
<b>4602M-LU-N</b>	<b>2172</b>	<b>2400</b>	<b>2474</b>	<b>2624</b>	<b>2850</b>	<b>3021</b>	<b>3248</b>

Side panel – laminated, outside, upholstered inside  
CAL 133, add \$311 List per two seater

COM 4.5 yds  
0.75 yd COM per single seat / 1.0 yd COM per single back / .5 yd COM per panel

MODEL	COM	GR 1	GR 2	GR 3	GR 4	GR 5	GR 6
<b>4602M-UL-N</b>	<b>2172</b>	<b>2400</b>	<b>2474</b>	<b>2624</b>	<b>2850</b>	<b>3021</b>	<b>3248</b>

Side panel – upholstered outside, laminated inside  
CAL 133, add \$311 List per two seater

COM 5.5 yds  
0.75 yd COM per single seat / 1.0 yd COM per single back / 1.0 yd COM per panel

MODEL	COM	GR 1	GR 2	GR 3	GR 4	GR 5	GR 6
<b>4602M-UU-N</b>	<b>2284</b>	<b>2563</b>	<b>2653</b>	<b>2838</b>	<b>3112</b>	<b>3320</b>	<b>3600</b>

Side panel – upholstered, outside and inside  
CAL 133, add \$392 List per two seater

### Dimensions (inches)

seat H	18.0	seat W	45.0	arm H	17.5
total H	31.75	total W	51.0	depth	30.0

For KYDEX® arms add suffix K and \$252  
Dynamic load tested to 750 lbs per two seater



4602M-N  
150 lbs



# HEAVY DUTY Specialty Seating DIGNITY2

## Standard Features

- Separate seat and back
- Arm caps available in wood, or polyurethane
- Laminate or upholstered side panels on inside and outside of arm in various combinations
- Upholstered side panels can match or contrast seat/back
- Select from 15 standard laminates or choose any standard Wilsonart, Nevamar, Formica, Arborite and Pionite matte finish laminates at no upcharge.
- Sculpted steel leg in any Spectone finish
- No protruding legs or hardware
- Tamper proof fastenings
- Non-removable steel levelling glides
- Ships assembled
- Ships 1/carton 15 cu ft

## Options

- Polyurethane arm caps available in Black (B) or Taupe RAL 7006 (T) or Sterling Grey (G)
- For wood arm caps, select from 9 standard stains, or stain-to-match at no upcharge
- KYDEX® arm caps available in Black (B) or Taupe RAL 7006 (T) or Sterling Grey (G)
- Thermofoil side panels on inside and outside of arm, call Customer Service for pricing and finishes
- Add up to 20 lbs of additional weight per seat, add \$156 List per seat
- Non-standard laminates, contact Spec for pricing
- Antibacterial and antimicrobial fabrics available
- Floor mounting straps available, call Customer Service
- Connecting and freestanding tables
- CAL 133
- Elimination of separated seat and back available with either solid or perforated seat pan, call Customer Service

Contact Spec Customer Service to railroad fabrics (specify repeat info and yardage requirement will be provided) and for repeats greater than 5" x 5"

### Three Seater with no arms

COM 5.25 yds

0.75 yd COM per single seat / 1.0 yd COM per single back

MODEL	COM	GR 1	GR 2	GR 3	GR 4	GR 5	GR 6
<b>4603M-LL-N</b>	<b>2725</b>	<b>2991</b>	<b>3079</b>	<b>3255</b>	<b>3517</b>	<b>3715</b>	<b>3980</b>

Side panel – laminated, outside and inside

CAL 133, add \$345 List per three seater

COM 6.25 yds

0.75 yd COM per single seat / 1.0 yd COM per single back / .5 yd COM per panel

MODEL	COM	GR 1	GR 2	GR 3	GR 4	GR 5	GR 6
<b>4603M-LU-N</b>	<b>2837</b>	<b>3153</b>	<b>3257</b>	<b>3467</b>	<b>3780</b>	<b>4014</b>	<b>4330</b>

Side panel – laminated, outside, upholstered inside

CAL 133, add \$426 List per three seater

COM 6.25 yds

0.75 yd COM per single seat / 1.0 yd COM per single back / .5 yd COM per panel

MODEL	COM	GR 1	GR 2	GR 3	GR 4	GR 5	GR 6
<b>4603M-UL-N</b>	<b>2837</b>	<b>3153</b>	<b>3257</b>	<b>3467</b>	<b>3780</b>	<b>4014</b>	<b>4330</b>

Side panel – upholstered outside, laminated inside

CAL 133, add \$426 List per three seater

COM 7.25 yds

0.75 yd COM per single seat / 1.0 yd COM per single back / 1.0 yd COM per panel

MODEL	COM	GR 1	GR 2	GR 3	GR 4	GR 5	GR 6
<b>4603M-UU-N</b>	<b>2948</b>	<b>3316</b>	<b>3434</b>	<b>3679</b>	<b>4040</b>	<b>4315</b>	<b>4681</b>

Side panel – upholstered, outside and inside

CAL 133, add \$507 List per three seater

Dimensions (inches)

seat H	18.0	seat W	68.0	arm H	17.5
total H	31.75	total W	74.0	depth	30.0

**For KYDEX® arms add suffix K and \$252**  
**Dynamic load tested to 1000 lbs per three seater**



**4603M-N**  
205 lbs



# HEAVY DUTY Specialty Seating DIGNITY2

## Standard Features

- Separate seat and back
- Arm caps available in wood, or polyurethane
- Laminate or upholstered side panels on inside and outside of arm in various combinations
- Upholstered side panels can match or contrast seat/back
- Select from 15 standard laminates or choose any standard Wilsonart, Nevamar, Formica, Arborite and Pionite matte finish laminates at no upcharge.
- Sculpted steel leg in any Spectone finish
- No protruding legs or hardware
- Tamper proof fastenings
- Non-removable steel levelling glides
- Ships assembled
- Ships 1/carton 15 cu ft

## Options

- Polyurethane arm caps available in Black (B) or Taupe RAL 7006 (T) or Sterling Grey (G)
- For wood arm caps, select from 9 standard stains, or stain-to-match at no upcharge
- KYDEX® arm caps available in Black (B) or Taupe RAL 7006 (T) or Sterling Grey (G)
- Thermofoil side panels on inside and outside of arm, call Customer Service for pricing and finishes
- Add up to 20 lbs of additional weight per seat, add \$156 List per seat
- Non-standard laminates, contact Spec for pricing
- Antibacterial and antimicrobial fabrics available
- Floor mounting straps available, call Customer Service
- Connecting and freestanding tables
- CAL 133
- Elimination of separated seat and back available with either solid or perforated seat pan, call Customer Service

Contact Spec Customer Service to railroad fabrics (specify repeat info and yardage requirement will be provided) and for repeats greater than 5" x 5"



## Bariatric Single Seater with no arms

COM 3.25 yds

1.5 yd COM per single seat / 1.75 yd COM per single back

MODEL	COM	GR 1	GR 2	GR 3	GR 4	GR 5	GR 6
<b>4601G-LL-N</b>	<b>1814</b>	<b>1979</b>	<b>2031</b>	<b>2140</b>	<b>2303</b>	<b>2426</b>	<b>2589</b>

Side panel – laminated, outside and inside

CAL 133, add \$148 List per chair



**4601G-N**  
113 lbs

COM 4.25 yds

1.5 yd COM per single seat / 1.75 yd COM per single back / .5 yd COM per panel

MODEL	COM	GR 1	GR 2	GR 3	GR 4	GR 5	GR 6
<b>4601G-LU-N</b>	<b>1925</b>	<b>2140</b>	<b>2209</b>	<b>2351</b>	<b>2565</b>	<b>2724</b>	<b>2940</b>

Side panel – laminated, outside, upholstered inside

CAL 133, add \$224 List per chair

COM 4.25 yds

1.5 yd COM per single seat / 1.75 yd COM per single back / .5 yd COM per panel

MODEL	COM	GR 1	GR 2	GR 3	GR 4	GR 5	GR 6
<b>4601G-UL-N</b>	<b>1925</b>	<b>2140</b>	<b>2209</b>	<b>2351</b>	<b>2565</b>	<b>2724</b>	<b>2940</b>

Side panel – upholstered outside, laminated inside

CAL 133, add \$224 List per chair

COM 5.25 yds

1.5 yd COM per single seat / 1.75 yd COM per single back / 1.0 yd COM per panel

MODEL	COM	GR 1	GR 2	GR 3	GR 4	GR 5	GR 6
<b>4601G-UU-N</b>	<b>2037</b>	<b>2302</b>	<b>2389</b>	<b>2565</b>	<b>2828</b>	<b>3026</b>	<b>3292</b>

Side panel – upholstered, outside and inside

CAL 133, add \$300 List per chair

Dimensions (inches)

seat H	18.0	seat W	31.0	arm H	17.5
total H	31.75	total W	36.5	depth	30.0

**For KYDEX® arms add suffix K and \$252**  
**Dynamic load tested to 750 lbs per chair**



# HEAVY DUTY Specialty Seating DIGNITY2

## Standard Features

- Separate seat and back
- Arm caps available in wood, or polyurethane
- Laminate or upholstered side panels on inside and outside of arm in various combinations
- Upholstered side panels can match or contrast seat/back
- Select from 15 standard laminates or choose any standard Wilsonart, Nevamar, Formica, Arborite and Pionite matte finish laminates at no upcharge.
- Sculpted steel leg in any Spectone finish
- No protruding legs or hardware
- Tamper proof fastenings
- Non-removable steel levelling glides
- Ships assembled
- Ships 1/carton 15 cu ft

## Options

- Polyurethane arm caps available in Black (B) or Taupe RAL 7006 (T) or Sterling Grey (G)
- For wood arm caps, select from 9 standard stains, or stain-to-match at no upcharge
- KYDEX® end and polyurethane middle arm caps available in Black (B), Taupe RAL 7006 (T), or Sterling Grey (G).
- Thermofoil side panels on inside and outside of arm, call Customer Service for pricing and finishes
- Add up to 20 lbs of additional weight per seat, add \$156 List per seat
- Non-standard laminates, contact Spec for pricing
- Antibacterial and antimicrobial fabrics available
- Floor mounting straps available, call Customer Service
- Connecting and freestanding tables
- CAL 133
- Elimination of separated seat and back available with either solid or perforated seat pan, call Customer Service

Contact Spec Customer Service to railroad fabrics (specify repeat info and yardage requirement will be provided) and for repeats greater than 5" x 5"

## Two Seater with half arms

COM 3.5 yds  
0.75 yd COM per single seat / 1.0 yd COM per single back

MODEL	COM	GR 1	GR 2	GR 3	GR 4	GR 5	GR 6
<b>4612M-LL</b>	<b>2483</b>	<b>2662</b>	<b>2721</b>	<b>2837</b>	<b>3013</b>	<b>3145</b>	<b>3321</b>

Side panel – laminated, outside and inside  
CAL 133, add \$230 List per two seater

COM 5.0 yds  
0.75 yd COM per single seat / 1.0 yd COM per single back / .5 yd COM per panel

MODEL	COM	GR 1	GR 2	GR 3	GR 4	GR 5	GR 6
<b>4612M-LU</b>	<b>2595</b>	<b>2847</b>	<b>2933</b>	<b>3099</b>	<b>3352</b>	<b>3538</b>	<b>3790</b>

Side panel – laminated outside, upholstered inside, half arms will be upholstered  
CAL 133, add \$554 List per two seater

COM 4.5 yds  
0.75 yd COM per single seat / 1.0 yd COM per single back / .5 yd COM per panel

MODEL	COM	GR 1	GR 2	GR 3	GR 4	GR 5	GR 6
<b>4612M-UL</b>	<b>2595</b>	<b>2847</b>	<b>2933</b>	<b>3099</b>	<b>3352</b>	<b>3538</b>	<b>3790</b>

Side panel – upholstered outside, laminated inside, half arms will be laminated  
CAL 133, add \$554 List per two seater

COM 6.0 yds  
0.75 yd COM per single seat / 1.0 yd COM per single back / 1.0 yd COM per panel

MODEL	COM	GR 1	GR 2	GR 3	GR 4	GR 5	GR 6
<b>4612M-UU</b>	<b>2708</b>	<b>3009</b>	<b>3112</b>	<b>3311</b>	<b>3613</b>	<b>3839</b>	<b>4141</b>

Side panel – upholstered, outside and inside  
CAL 133, add \$797 List per two seater

### Dimensions (inches)

seat H	18.0	seat W	48.0	arm H	26.0
total H	31.75	total W	54.0	depth	30.0

**For KYDEX® arms add suffix K and \$378**  
**Dynamic load tested to 750 lbs per two seater**



**4612M**  
150 lbs



# HEAVY DUTY Specialty Seating DIGNITY2

## Standard Features

- Separate seat and back
- Arm caps available in wood, or polyurethane
- Laminate or upholstered side panels on inside and outside of arm in various combinations
- Upholstered side panels can match or contrast seat/back
- Select from 15 standard laminates or choose any standard Wilsonart, Nevamar, Formica, Arborite and Pionite matte finish laminates at no upcharge.
- Sculpted steel leg in any Spectone finish
- No protruding legs or hardware
- Tamper proof fastenings
- Non-removable steel levelling glides
- Ships assembled
- Ships 1/carton 15 cu ft

## Options

- Polyurethane arm caps available in Black (B) or Taupe RAL 7006 (T) or Sterling Grey (G)
- For wood arm caps, select from 9 standard stains, or stain-to-match at no upcharge
- KYDEX® end and polyurethane middle arm caps available in Black (B), Taupe RAL 7006 (T), or Sterling Grey (G).
- Thermofoil side panels on inside and outside of arm, call Customer Service for pricing and finishes
- Add up to 20 lbs of additional weight per seat, add \$156 List per seat
- Non-standard laminates, contact Spec for pricing
- Antibacterial and antimicrobial fabrics available
- Floor mounting straps available, call Customer Service
- Connecting and freestanding tables
- CAL 133
- Elimination of separated seat and back available with either solid or perforated seat pan, call Customer Service

Contact Spec Customer Service to railroad fabrics (specify repeat info and yardage requirement will be provided) and for repeats greater than 5" x 5"

### Three Seater with half arms

COM 5.25 yds

0.75 yd COM per single seat / 1.0 yd COM per single back

MODEL	COM	GR 1	GR 2	GR 3	GR 4	GR 5	GR 6
<b>4613M-LL</b>	<b>3550</b>	<b>3815</b>	<b>3905</b>	<b>4080</b>	<b>4344</b>	<b>4540</b>	<b>4805</b>

Side panel – laminated, outside and inside

CAL 133, add \$345 List per three seater

COM 7.25 yds

0.75 yd COM per single seat / 1.0 yd COM per single back / .5 yd COM per panel

MODEL	COM	GR 1	GR 2	GR 3	GR 4	GR 5	GR 6
<b>4613M-LU</b>	<b>3662</b>	<b>4027</b>	<b>4151</b>	<b>4393</b>	<b>4758</b>	<b>5029</b>	<b>5395</b>

Side panel – laminated outside, upholstered inside, half arms will be upholstered

CAL 133, add \$750 List per three seater

COM 6.25 yds

0.75 yd COM per single seat / 1.0 yd COM per single back / .5 yd COM per panel

MODEL	COM	GR 1	GR 2	GR 3	GR 4	GR 5	GR 6
<b>4613M-UL</b>	<b>3662</b>	<b>4027</b>	<b>4151</b>	<b>4393</b>	<b>4758</b>	<b>5029</b>	<b>5395</b>

Side panel – upholstered outside, laminated inside, half arms will be laminated

CAL 133, add \$750 List per three seater

COM 8.25 yds

0.75 yd COM per single seat / 1.0 yd COM per single back / 1.0 yd COM per panel

MODEL	COM	GR 1	GR 2	GR 3	GR 4	GR 5	GR 6
<b>4613M-UU</b>	<b>3773</b>	<b>4189</b>	<b>4330</b>	<b>4605</b>	<b>5020</b>	<b>5328</b>	<b>5744</b>

Side panel – upholstered, outside and inside

CAL 133, add \$993 List per three seater

Dimensions (inches)

seat H	18.0	seat W	75.0	arm H	26.0
total H	31.75	total W	80.5	depth	30.0

For KYDEX® arms add suffix K and \$504

Dynamic load tested to 1000 lbs per three seater



**4613M**  
205 lbs



Pricing March 1, 2019  
Discount 57.7% from List prices



SIN 711-16

# HEAVY DUTY Specialty Seating DIGNITY2

## Standard Features

- Tamper proof fastenings

To order full panel side panels, add ZC-LL, or ZC-U to model number, e.g. 4601M-ZC-LL

To order wall-saving side panels, add WS-LL or WS-U to the model number, e.g. 4601M-WS-U

Pricing is for entire chair (2 end side panels).

Contact Spec Customer Service to railroad fabrics (specify repeat info and yardage requirement will be provided) and for repeats greater than 5" x 5"

## Options

- Thermofoil side panels on inside and outside of arm, call Customer Service for pricing and finishes
- Floor mounting straps available, call Customer Service



## Extended Side Panels

### Laminate Panels Inside & Outside

MODEL	LIST
ZC-LL	82

### Laminate & Upholstered Combination Panels

COM 0.5 yd per panel

MODEL	COM	GR 1	GR 2	GR 3	GR 4	GR 5	GR 6
ZC-LU	82	92	95	101	110	117	127
ZC-UL	82	92	95	101	110	117	127

### Fully Upholstered Panels

COM 1.5 yd per panel

MODEL	COM	GR 1	GR 2	GR 3	GR 4	GR 5	GR 6
ZC-U	82	92	95	101	110	117	127



Side panel extended to floor

## Wall-Saving Side Panels

### Laminate Panels Inside & Outside

MODEL	LIST
WS-LL	133

### Laminate & Upholstered Combination Panels

COM 1.0 yd per panel

MODEL	COM	GR 1	GR 2	GR 3	GR 4	GR 5	GR 6
WS-LU	133	259	293	353	458	534	610
WS-UL	133	259	293	353	458	534	610

### Fully Upholstered Panels

COM 2.0 yd per panel

MODEL	COM	GR 1	GR 2	GR 3	GR 4	GR 5	GR 6
WS-U	133	259	293	353	458	534	610



Wall-saving side panels



Pricing March 1, 2019  
Discount 57.7% from List prices



SIN 711-19

# HEAVY DUTY Specialty Seating DIGNITY2

## Standard Features

- Black finish only
- 6" soft wheel casters
- Standard Dolly holds 1 single seat chair
- Ships 1/carton, 17 cu. ft.
- Ships assembled



## Dignity2 - Dolly

Description	Model	Price	Weight
Single Seat Dolly	<b>DIGN-99</b>	<b>536</b>	12lb

### Dimensions (inches)

height	39.0
width	23.0
depth	30.0





Pricing March 1, 2019  
Discount 57.7% from List prices



OPEN MARKET

# HEAVY DUTY Specialty Seating HARDI

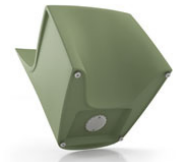
## Standard Features

- Single roto-molded design
- CAL 133 compliant
- Select from 6 standard colors, which have been selected from our palette of standard Spectone finishes
- No protruding legs or hardware
- Standard without glides
- Dining ships 1/carton 14 cu ft, Lounge ships 1/carton 16 cu ft
- Removable threaded cap is fastened with tamperproof fasteners. Sand (not included) can be added on site for additional weight and ballast utilizing the plastic bag from packaging. Contact Customer Service for more information

## Options

- Four nickel-plated non-removable nylon glides secured with LOCTITE®, add \$20 List
- Ganging is available. Please specify a set of nickel-plated non-removable nylon glides secured with LOCTITE for each chair that you want to gang together (\$20 List per chair), and add Q-1 ganging kits (\$35 List).  
In other words, to gang 9 chairs together, please order 9 sets of glides and 8 ganging kits.
- Floor mounting is available. Please specify a set of nickel-plated non-removable nylon glides secured with LOCTITE for each chair that you want to mount to the floor (\$20 List per chair), and add the same amount of floor mounting kits (\$35 List).

In other words, to floor mount 9 chairs, please order 9 sets of glides and 9 floor mounting kits.



## Dining

MODEL	Price
<b>8701</b>	<b>531</b>
<b>8708</b>	<b>634</b>

### Dimensions (inches)

seat H	18.0	seat W	20.0	arm H	26.0	total H	33.0
depth	24.0	total W (no arms)	22.0	total W (arms)	24.0		

Exceeds BIFMA Seating Durability Test to 500 lbs



**8701**  
Without arms  
23 lbs



**8708**  
With arms  
28 lbs

## Lounge

MODEL	Price
<b>8801</b>	<b>607</b>
<b>8808</b>	<b>710</b>

### Dimensions (inches)

seat H	17.25	seat W	23.0	arm H	25.0	total H	29.50
depth	27.0	total W (no arms)	26.0	total W (arms)	27.0		

Exceeds BIFMA Seating Durability Test to 500 lbs



**8801**  
Without arms  
25 lbs



**8808**  
With arms  
31 lbs





Pricing March 1, 2019  
Discount 57.7% from List prices



OPEN MARKET

# HEAVY DUTY Specialty Seating HARDI

## Standard Features

- Single roto-molded design
- CAL 133 compliant
- Select from 6 standard colors, which have been selected from our palette of standard Spectone finishes
- No protruding legs or hardware
- Rocker ships 1/carton 26 cu ft
- Removable threaded cap is fastened with tamperproof fasteners. Sand (not included) can be added on site for additional weight and ballast utilizing the plastic bag from packaging. Contact Customer Service for more information




---

## Rocker

---

MODEL	Price
<b>8840</b>	<b>1210</b>

### Dimensions (inches)

seat H	18.25	seat W	20.0	arm H	25.0	total H	37.5
depth	33.75	total W	28.0				

Exceeds BIFMA Seating Durability Test to 500 lbs



**8840**  
36 lbs

---



Pricing March 1, 2019  
Discount 57.7% from List prices



OPEN MARKET

# HEAVY DUTY Specialty Seating HARDI

## Standard Features

- Single roto-molded design
- CAL 133 compliant
- Select from 6 standard colors, which have been selected from our palette of standard Spectone finishes
- No protruding legs or hardware
- Standard without glides
- Stool ships 1/carton 4 cu ft
- Removable threaded cap is fastened with tamperproof fasteners. Sand (not included) can be added on site for additional weight and ballast utilizing the plastic bag from packaging. Contact Customer Service for more information

## Options

- Four nickel-plated non-removable nylon glides secured with LOCTITE®, add \$20 List
- Floor mounting is available. Please specify a set of nickel-plated non-removable nylon glides secured with LOCTITE for each chair that you want to mount to the floor (\$20 List per chair), and add the same amount of floor mounting kits (\$35 List).

In other words, to floor mount 9 chairs, please order 9 sets of glides and 9 floor mounting kits.




---

## Stool

---

MODEL	Price
<b>8901</b>	<b>401</b>

### Dimensions (inches)

seat H	18.0	seat W	16.0
total H	18.0	total W	17.5

Exceeds BIFMA Seating Durability Test to 500 lbs



**8901**  
10 lbs

---



Pricing March 1, 2019  
Discount 57.7% from List prices



SIN 711-16

# HEAVY DUTY Specialty Seating MIDWAY HD

## Standard Features

- Separate seat and back
- Polyurethane arms or wood arms
- Fully welded 1.25" frame with glides
- Added weight, Sled base
- Frame in any Spectone color
- Steel glides secured with LOCTITE®
- Tamperproof hardware
- Zippered covers glued shut, pulls removed
- Ships assembled
- Ships 1/carton 17 cu ft

## Options

- Polyurethane arms available in Black, Sterling Grey or Taupe (RAL 7006)
- Wood arms in Natural Maple are available in any of 9 standard stains or stain-to-match at no up charge
- Floor mounting glides, add \$46 List/chair
- Antibacterial and antimicrobial fabrics available
- Different fabric on seat and back at no upcharge
- CAL 133

Contact Spec™ Customer Service to railroad fabrics (specify repeat info and yardage requirement will be provided) and for repeats greater than 5" x 5"



## Midway Single Seater with arms – Sled Base

COM 1.5 yds  
0.5 yd COM per single seat  
1.0 yd COM per single back

MODEL	COM	GR 1	GR 2	GR 3	GR 4	GR 5	GR 6
<b>3201UHD</b>	<b>1323</b>	<b>1430</b>	<b>1467</b>	<b>1537</b>	<b>1643</b>	<b>1725</b>	<b>1834</b>

Dimensions (inches)

seat H	18.0	seat W	20.5	arm H	26.0
total H	36.0	total W	23.75	depth	26.0

Exceeds BIFMA Seating Durability Test to 500 lbs per seat  
CAL 133, add \$115 List per seat



**3201UHD**  
48 lbs

## Midway Highback with arms – Sled Base

COM 1.6 yds  
0.5 yd COM per single seat  
1.1 yds COM per single back

MODEL	COM	GR 1	GR 2	GR 3	GR 4	GR 5	GR 6
<b>3201HHD</b>	<b>1437</b>	<b>1547</b>	<b>1586</b>	<b>1657</b>	<b>1767</b>	<b>1852</b>	<b>1963</b>

Dimensions (inches)

seat H	18.0	seat W	20.5	arm H	26.0
total H	46.0	total W	23.75	depth	26.0

Exceeds BIFMA Seating Durability Test to 500 lbs per seat  
CAL 133, add \$144 List per chair



**3201HHD**  
50 lbs



Pricing March 1, 2019  
Discount 57.7% from List prices



SIN 711-16

# HEAVY DUTY Specialty Seating MIDWAY HD

## Standard Features

- Separate seat and back
- Polyurethane arms or wood arms
- Fully welded 1.25" frame with glides
- Added weight, Sled base
- Frame in any Spectone color
- Steel glides secured with LOCTITE®
- Tamperproof hardware
- Zippered covers glued shut, pulls removed
- Ships assembled
- Ships 1/carton 17 cu ft

## Options

- Polyurethane arms available in Black, Sterling Grey or Taupe (RAL 7006)
- Wood arms in Natural Maple are available in any of 9 standard stains or stain-to-match at no up charge
- Floor mounting glides, add \$46 List/chair
- Antibacterial and antimicrobial fabrics available
- Different fabric on seat and back at no upcharge
- CAL 133

Contact Spec Customer Service to railroad fabrics (specify repeat info and yardage requirement will be provided) and for repeats greater than 5" x 5"




---

## Midway Bariatric with arms – Sled Base

---

COM 2.55 yds  
0.8 yd COM per single seat  
1.75 yd COM per single back

MODEL	COM	GR 1	GR 2	GR 3	GR 4	GR 5	GR 6
<b>3201GHD</b>	<b>1723</b>	<b>1879</b>	<b>1933</b>	<b>2035</b>	<b>2191</b>	<b>2310</b>	<b>2469</b>

Dimensions (inches)

seat H	18.0	seat W	30.0	arm H	26.0
total H	36.0	total W	32.75	depth	26.0

Exceeds BIFMA Seating Durability Test to 750 lbs per seat  
CAL 133, add \$197 List per seat



**3201GHD**  
56 lbs



Pricing March 1, 2019  
Discount 57.7% from List prices



SIN 711-16

# HEAVY DUTY Specialty Seating SNOWBALL 2 HD

## Standard Features

- 0.875" frame
- Added weight, Sled base
- Frame in any Spectone color
- Steel glides secured with LOCTITE®
- Tamperproof hardware
- Does not stack
- Ships 1/carton 11 cu ft
- Staples on the bottom of the seat are covered by a 100% recycled plastic seat pan

## Options

- Floor mounting glides, add \$46 List/chair
- CAL 133

Contact Spec Customer Service to railroad fabrics (specify repeat info and yardage requirement will be provided) and for repeats greater than 5" x 5"



## Snowball 2 Armless – Sled Base

COM 1.0 yd  
0.5 yd COM per single seat  
0.5 yd COM per single back

MODEL	COM	GR 1	GR 2	GR 3	GR 4	GR 5	GR 6
<b>1891HD</b>	<b>634</b>	<b>687</b>	<b>706</b>	<b>742</b>	<b>794</b>	<b>835</b>	<b>889</b>

Dimensions (inches)

	seat H	18.0	seat W	18.5	depth	21.5
total H	33.0		total W	20.25		

Exceeds BIFMA Seating Durability Test to 500 lbs per chair  
CAL 133, add \$60 List per chair  
1" extra seat foam, specify and add \$14 List



**1891HD**  
44 lbs

## Snowball 2 with Steel Arms – Sled Base

COM 1.0 yd  
0.5 yd COM per single seat  
0.5 yd COM per single back

MODEL	COM	GR 1	GR 2	GR 3	GR 4	GR 5	GR 6
<b>1881HD</b>	<b>678</b>	<b>730</b>	<b>749</b>	<b>785</b>	<b>837</b>	<b>879</b>	<b>932</b>

Dimensions (inches)

	seat H	18.0	seat W	18.5	depth	21.5
total H	33.0		total W	23.5		

Exceeds BIFMA Seating Durability Test to 500 lbs per chair  
CAL 133, add \$60 List per chair  
1" extra seat foam, specify and add \$14 List



**1881HD**  
45 lbs



Pricing March 1, 2019  
Discount 57.7% from List prices



SIN 711-16

# HEAVY DUTY Specialty Seating TAILOR HD

## Standard Features

- Separate seat and back
- A single-piece metal pan is welded to the frame, covering the underside of both seat and back, and therefore eliminating pass-through. Perforations in the metal pan allow for drainage
- Wall-saving frame
- Roto-molded foot in RAL 7037
- Exposed frame detail is standard in RAL 7037
- Tamper proof fastenings
- Ships assembled
- Ships 1 single seat per carton, 24 cu ft
- Ships 1 bariatric seat per carton, 32 cu ft

## Options

- Polyurethane arm caps available in Black (B), Taupe RAL 7006 (T) or Sterling Grey (G), add \$113 List per arm
- Nickel-plated non-removable nylon glides secured with LOCTITE®, add \$20 List
- Floor mounting straps available, call Customer Service
- Up to 40 lbs of additional weight per seat is available, call Customer Service
- Upholstered arms/seat/back can match or contrast
- Antibacterial and antimicrobial fabrics available
- CAL 133

Contact Spec Customer Service to railroad fabrics (specify repeat info and yardage requirement will be provided) and for repeats greater than 5" x 5"



## Single Seat With Arms

COM 4.75 yds  
1.25 yds COM per single seat  
1.5 yds COM per single back  
2.0 yds COM per arm

MODEL	COM	GR 1	GR 2	GR 3	GR 4	GR 5	GR 6
<b>9101MHD</b>	<b>1758</b>	<b>2019</b>	<b>2105</b>	<b>2285</b>	<b>2551</b>	<b>2754</b>	<b>3024</b>

Dimensions (inches)

seat H	18.0	seat W	23.0	arm H	24.5
total H	33.0	total W	23.0	total D	30.0

CAL 133, add \$348 List per unit  
Exceeds BIFMA Seating Durability Test to 750 lbs per single seater



**9101MHD**  
119 lbs

## Bariatric With Arms

COM 5.5 yds  
1.5 yds COM per single seat  
2.0 yds COM per single back  
2.0 yds COM per arm

MODEL	COM	GR 1	GR 2	GR 3	GR 4	GR 5	GR 6
<b>9101GHD</b>	<b>1954</b>	<b>2259</b>	<b>2359</b>	<b>2570</b>	<b>2881</b>	<b>3118</b>	<b>3434</b>

Dimensions (inches)

seat H	18.0	seat W	30.0	arm H	24.5
total H	33.0	total W	36.5	total D	30.0

CAL 133, add \$403 List per unit  
Exceeds BIFMA Seating Durability Test to 750 lbs per bariatric chair



**9101GHD**  
133 lbs



Pricing March 1, 2019  
Discount 57.7% from List prices



SIN 711-17

# HEAVY DUTY Specialty Seating TAILOR HD

## Standard Features

- Separate seat and back
- A single-piece metal pan is welded to the frame, covering the underside of both seat and back, and therefore eliminating pass-through. Perforations in the metal pan allow for drainage
- Wall-saving frame
- Roto-molded foot in RAL 7037
- Exposed frame detail is standard in RAL 7037
- Tamper proof fastenings
- Ships assembled
- Ships 1 two seat per carton, 43 cu ft
- Ships 1 three seat per carton, 62 cu ft

## Options

- Polyurethane arm caps available in Black (B), Taupe RAL 7006 (T) or Sterling Grey (G), add \$113 List per arm
- Nickel-plated non-removable nylon glides secured with LOCTITE®, add \$20 List
- Floor mounting straps available, call Customer Service
- Up to 40 lbs of additional weight per seat is available, call Customer Service
- Upholstered arms/seat/back can match or contrast
- Antibacterial and antimicrobial fabrics available
- CAL 133

Contact Spec Customer Service to railroad fabrics (specify repeat info and yardage requirement will be provided) and for repeats greater than 5" x 5"



## Two Seat With Arms

COM 7.5 yds  
2.5 yds COM per two seater one-piece seat  
3.0 yds COM per two seater two-piece back (1.5 yds COM per single back)  
1.0 yds COM per arm

MODEL	COM	GR 1	GR 2	GR 3	GR 4	GR 5	GR 6
9102MHD	2583	2989	3122	3402	3815	4130	4550

Dimensions (inches)

	seat H	18.0	seat W	23.0	arm H	24.5
total H	33.0	total W	46.0	total D	30.0	

CAL 133, add \$549 List per unit  
Exceeds BIFMA Seating Durability Test to 450 lbs per two seater



9102MHD  
175 lbs

## Three Seat With Arms

COM 10.25 yds  
3.75 yds COM per three seater one-piece seat  
4.5 yds COM per three seater three-piece back (1.5 yds COM per single back)  
1.0 yds COM per arm

MODEL	COM	GR 1	GR 2	GR 3	GR 4	GR 5	GR 6
9103MHD	3448	3999	4180	4560	5121	5549	6119

Dimensions (inches)

	seat H	18.0	seat W	23.0	arm H	24.5
total H	33.0	total W	69.0	total D	30.0	

CAL 133, add \$750 List per unit  
Exceeds BIFMA Seating Durability Test to 675 lbs per three seater



9103MHD  
231 lbs



# HEAVY DUTY Specialty Seating TRAFFIC DINING

## Standard Features

- Tabletop standard in Laminate with PVC Flat (PVF), 2MM or Self Edge (SE)
- Select from 15 standard laminates or choose any standard Wilsonart, Nevamar, Formica, Arborite and Pionite matte finish laminates at no upcharge. For other laminate please contact the factory for pricing.
- PVC Flat edge and 2mm Bio edge available in 38 solid colors. 2mm PVC edge available in wood grain to match 9 standard stains.
- Floor Mounting plates
- Tamperproof fasteners
- Welded steel end caps

## Options

- 30" Bariatric seats are available. Contact factory for pricing
- Coated steel tabletop available. Contact factory for pricing
- CAL 133

Contact Spec Customer Service to railroad fabrics (specify repeat info and yardage requirement will be provided) and for repeats greater than 5" x 5"




---

## Perforated Beam without arms, without upholstered cushions

---

N/A COM per single seat

MODEL	PRICE
7100NHD	4731

Dimensions (inches)

seat H	18.0	seat W	22.0	table top	30x48	table H	29.0
total H	33.75	total W	48.0	seat depth	17.0	total depth	74

Exceeds BIFMA Seating Durability Test to 500 lbs per chair

---

## Perforated Beam without arms, with upholstered cushions

---

0.75 yd COM per single seat and back

MODEL	COM	GR 1	GR 2	GR 3	GR 4	GR 5	GR 6
7100UHD	4807	4968	5022	5159	5322	5447	5608

Dimensions (inches)

seat H	18.0	seat W	22.0	table top	30x48	table H	29.0
total H	33.75	total W	48.0	seat depth	17.0	total depth	74

Exceeds BIFMA Seating Durability Test to 500 lbs per chair

CAL 133, add \$231 List per unit

---







Pricing March 1, 2019  
Discount 57.7% from List prices



SIN 711-16

# HEAVY DUTY Specialty Seating 1000 SERIES HD

## Standard Features

- One piece seat and back
- Fully welded 1.25" frame
- Added weight, Sled base
- Frame in any Spectone color
- Steel glides secured with LOCTITE®
- Tamperproof hardware
- Zippered covers glued shut, pulls removed
- Ships assembled
- Ships 1/carton 15 cu ft

## Options

- Floor mounting glides, add \$46 List/chair
- CAL 133

Contact Spec Customer Service to railroad fabrics (specify repeat info and yardage requirement will be provided) and for repeats greater than 5" x 5"




---

## 1000 Series Armless Medium Back – Sled Base

---

1.25 yds COM per single seat and back

MODEL	COM	GR 1	GR 2	GR 3	GR 4	GR 5	GR 6
<b>1014HD</b>	<b>1061</b>	<b>1135</b>	<b>1153</b>	<b>1198</b>	<b>1265</b>	<b>1317</b>	<b>1385</b>

Dimensions (inches)

seat H	18.0	seat W	18.5	depth	22.0
total H	33.0	total W	18.5		

Exceeds BIFMA Seating Durability Test to 500 lbs per chair  
CAL 133, add \$77 List per chair



**1014HD**  
46 lbs



Pricing March 1, 2019  
Discount 57.7% from List prices



SIN 711-16

# HEAVY DUTY Specialty Seating 2000 SERIES HD

## Standard Features

- Fully welded 1.5" frame
- Added weight, Sled base
- Frame in any Spectone color
- Steel glides secured with LOCTITE®
- Tamperproof hardware
- Zippered covers glued shut, pulls removed
- Ships assembled
- Ships 1/carton 17 cu ft

## Options

- Floor mounting glides, add \$46 List/chair
- CAL 133

Contact Spec Customer Service to railroad fabrics (specify repeat info and yardage requirement will be provided) and for repeats greater than 5" x 5"



## 2000 Series One Piece Single Seater with arms – Sled Base

COM 1.75 yds  
1.75 yd COM per single seat and back

MODEL	COM	GR 1	GR 2	GR 3	GR 4	GR 5	GR 6
<b>2201CHD</b>	<b>1118</b>	<b>1203</b>	<b>1233</b>	<b>1292</b>	<b>1377</b>	<b>1443</b>	<b>1532</b>

Dimensions (inches)

seat H	18.0	seat W	22.0	arm H	26.0
total H	35.0	total W	25.0	depth	26.5

Exceeds BIFMA Seating Durability Test to 500 lbs per seat  
CAL 133, add \$104 List per seat



**2201CHD**  
67 lbs

## 2000 Series Separate Seat and Back with arms – Sled Base

COM 1.75 yds  
1.0 yd COM per single seat  
0.75 yd COM per single back

MODEL	COM	GR 1	GR 2	GR 3	GR 4	GR 5	GR 6
<b>2201CHDS</b>	<b>1313</b>	<b>1399</b>	<b>1428</b>	<b>1485</b>	<b>1572</b>	<b>1639</b>	<b>1726</b>

Dimensions (inches)

seat H	18.0	seat W	22.0	arm H	26.0
total H	35.0	total W	25.0	depth	26.5

Exceeds BIFMA Seating Durability Test to 500 lbs per seat  
CAL 133, add \$104 List per chair



**2201CHDS**  
67 lbs



Pricing March 1, 2019  
Discount 57.7% from List prices



## HEAVY DUTY Specialty Tables



### PRODUCT CODE

**2424SQ-TR HD**

Product Code

Specification

HD: Heavy Duty\*

\*The code for our heavy duty tables featured in the pages below is the same as a regular model of the table you are specifying. By adding the letters "HD" at the end of the product code, it lets us know the product is intended for a behavioral health environment and the features below will automatically be specified.



### FEATURES

Tamper-Proof



Weighted

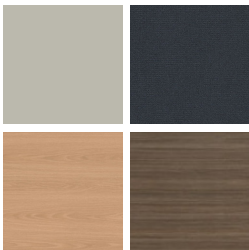


LOCTITE®-secured Glides



### FINISHES

LAMINATE



Select from 15 standard laminates or choose any standard Wilsonart, Nevamar, Formica, Arborite and Pionite matte finish laminates at no upcharge

VENEER



Select from one of our 9 standard wood stains or stain-to-match at no upcharge

BASE



Select from one of our 76 standard Spectone colors

EDGE



Check out our website for a complete list of edge profiles.



# HEAVY DUTY Specialty Tables DIGNITY

## Standard Features

- Tops in laminate or veneer
- Select from 15 standard laminates or choose any standard Wilsonart, Nevamar, Formica, Arborite and Pionite matte finish laminates at no upcharge.
- Laminate tops with PVC Flat (PVF), Self Edge (SE), or hardwood (HB) edge
- 9 standard veneer and hardwood edge stains. Stain-to-match available at no upcharge.
- Tops utilize NU Green earth friendly core
- 18" height
- Non-removable steel levelling glides

*Radius Corner Tables are recommended for open areas*

## Options

- Specify frame finish, Black (B), Sterling Grey (G) or Taupe RAL 7006 (T)
- Additional weight can be added, contact factory
- Non-standard laminates, contact Spec for pricing
- Floor mounting straps available, call Customer Service



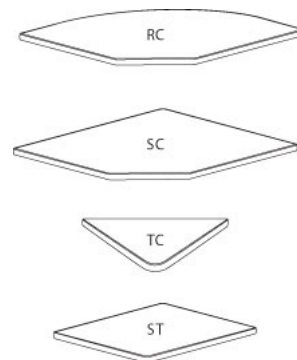
## Freestanding Lounge Tables

Model	Laminate PVF/SE Edge	Laminate HB Edge	Veneer HB Edge	Weight	Cu.Ft.
DIGN - 24 x 24 SQ	1174	1363	1399	57	7.2
DIGN - 30 x 30 SQ	1323	1460	1509	74	13.5
DIGN - 36 x 36 SQ	1445	1659	1718	94	18
DIGN - 42 x 42 SQ	1756	2066	2161	116	24.5
DIGN - 48 x 48 SQ	1945	2217	2318	141	32
DIGN - 24 DIA	1145	1490	1527	45	7.2
DIGN - 30 DIA	1291	1630	1677	57	13.5
DIGN - 36 DIA	1426	1921	2005	71	18
DIGN - 42 DIA	1745	2296	2414	87	24.5
DIGN - 48 DIA	1805	2549	2678	104	32



## Corner and Spacer Connecting Tables

Model	Laminate PVF/SE	Laminate HB Edge	Veneer HB Edge	Weight	Cu.Ft.
DIGNRC - 28 x 28 <i>Radius Corner Table</i>	677	848	1049	31	2
DIGNSC - 28 x 28 <i>Square Corner Table</i>	677	848	1049	32	2
DIGNTC - 45 degree <i>Corner Table</i>	677	848	1049	26	2
DIGNST - 21 x 24 <i>Spacer Table</i>	521	710	856	27	2





# HEAVY DUTY Specialty Tables DIGNITY2

## Standard Features

- Tops in laminate or veneer
- Select from 15 standard laminates or choose any standard Wilsonart, Nevamar, Formica, Arborite and Pionite matte finish laminates at no upcharge.
- Laminate tops with PVC Flat (PVF), Self Edge (SE), or hardwood (HB) edge
- 9 standard veneer and hardwood edge stains. Stain-to-match available at no upcharge.
- Tops utilize NU Green earth friendly core
- 18" height
- Non-removable steel levelling glides

*Radius Corner Tables are recommended for open areas*

## Options

- Additional weight can be added, contact factory
- Non-standard laminates, contact Spec for pricing
- Floor mounting straps available, call Customer Service



## Freestanding Lounge Tables

Model	Laminate PVF/SE Edge	Laminate HB Edge	Veneer HB Edge	Weight	Cu.Ft.
DIGN2 - 24 x 24 SQ	1174	1363	1399	62	7.2
DIGN2 - 30 x 30 SQ	1323	1460	1509	80	13.5
DIGN2 - 36 x 36 SQ	1445	1659	1718	101	18
DIGN2 - 42 x 42 SQ	1756	2066	2161	124	24.5
DIGN2 - 48 x 48 SQ	1945	2217	2318	151	32
DIGN2 - 24 DIA	1145	1490	1527	49	7.2
DIGN2 - 30 DIA	1291	1630	1677	61	13.5
DIGN2 - 36 DIA	1426	1921	2005	76	18
DIGN2 - 42 DIA	1745	2296	2414	93	24.5
DIGN2 - 48 DIA	1805	2549	2678	111	32



## Corner and Spacer Connecting Tables

Model	Laminate PVF/SE	Laminate HB Edge	Veneer HB Edge	Weight	Cu.Ft.
DIGN2RC - 28 x 28 <i>Radius Corner Table</i>	677	848	1049	31	2
DIGN2SC - 28 x 28 <i>Square Corner Table</i>	677	848	1049	32	2
DIGN2TC - 45 degree <i>Corner Table</i>	677	848	1049	26	2
DIGN2ST - 21 x 24 <i>Spacer Table</i>	521	710	856	27	2



**Dignity2 seating is available connected as 1, 2 and 3 seaters, with or without arms between, with corner or spacer tables. Above pricing includes connector bars.**



Pricing March 1, 2019  
Discount 57.7% from List prices



SIN 711-11

# HEAVY DUTY Specialty Tables

## DRUM HD, CUBE HD, OVAL HD

### NOTES AND OPTIONS

- Select from 15 standard laminates or choose any standard Wilsonart, Nevamar, Formica, Arborite and Pionite matte finish laminates at no upcharge. For other laminate please contact the factory for pricing.
- 9 standard veneer and hardwood edge stains. Stain-to-match available at no upcharge.
- Other sizes are available. Contact the factory for pricing.
- Standard heights: 16", 18", 20", 22".



MODEL	BASES		TOP SPECIFICATIONS		OPTIONS	LBS
	<i>Code</i>	<i>Qty.</i>	<i>Laminate</i>	<i>Veneer</i>	<i>Kickplate</i>	
			<b>SE</b>	<b>SE</b>	<b>KP</b>	
<i>Round</i>						
<b>18D</b>	<b>DRMHD</b>	1	788	828	49	78
<b>24D</b>	<b>DRMHD</b>	1	831	874	49	92
<b>30D</b>	<b>DRMHD</b>	1	1036	1082	49	106
<b>36D</b>	<b>DRMHD</b>	1	1170	1217	49	121
<b>42D</b>	<b>DRMHD</b>	1	1294	1377	49	138
<i>Square</i>						
<b>18 x 18SQ</b>	<b>CUBEHD</b>	1	606	828	49	81
<b>24 x 24SQ</b>	<b>CUBEHD</b>	1	638	873	49	100
<b>30 x 30SQ</b>	<b>CUBEHD</b>	1	793	961	49	113
<b>36 x 36SQ</b>	<b>CUBEHD</b>	1	917	1480	49	150
<i>Oval</i>						
<b>30 x 36</b>	<b>OVALHD</b>	1	1707	1776	72	122
<b>30 x 42</b>	<b>OVALHD</b>	1	1887	2011	72	135
<b>30 x 48</b>	<b>OVALHD</b>	1	2386	2511	72	148



**DRMHD**



**CUBEHD**



**OVALHD**



Pricing March 1, 2019  
Discount 57.7% from List prices





SIN 711-11

# HEAVY DUTY Specialty Tables

## TRUMPET HD, DISC HD

### NOTES AND OPTIONS

- Select from 15 standard laminates or choose any standard Wilsonart, Nevamar, Formica, Arborite and Pionite matte finish laminates at no upcharge. For other laminate please contact the factory for pricing.
- 9 standard veneer and hardwood edge stains. Stain-to-match available at no upcharge.
- Standard table height: 29". Customs available.
- All bases are standard with floor leveling glides.
- Chrome bases may be available as an upcharge. Please contact the factory.

MODEL <i>Size / Shape</i>	BASES		TOP SPECIFICATIONS						OPTIONS	MOBILITY	LBS	
	Code	#of	For Laminate Top			For Veneer Top						
			SE PVF 2MM	HF HB	HBV HBVR HBG	HF2 HB2 HKN4 HKNR4 HBG2	HF HB HBV HBVR HBG	HF2 HB2 HKN4 HKNR4 HBG2				
 24 DIA	TRHD	1	853	1199	1235	1340	1396	1504			99	
	DISCHD	1	1095	1441	1477	1582	1638	1746			116	
30 DIA	TRHD	1	953	1294	1340	1549	1496	1654			109	
	DISCHD	1	1195	1536	1582	1791	1738	1896			126	
36 DIA	TRHD	1	1048	1542	1629	1800	1852	2072			120	
	DISCHD	1	1290	1784	1871	2042	2094	2314			137	
42 DIA	TRHD	1	1322	1876	1995	2250	2275	2576			134	
	DISCHD	1	1564	2118	2237	2492	2517	2818			161	
48 DIA	TRHD	1	1344	2088	2218	2344	2800	3187			150	
	DISCHD	1	1586	2330	2460	2586	3042	3429			177	
 24X24 SQ	TRHD	1	883	1070	1106	1171	1219	1380			99	
	30X30 SQ	TRHD	1	986	1122	1171	1344	1281	1504			106
		DISCHD	1	1228	1364	1413	1586	1523	1746			136
	36X36 SQ	TRHD	1	1066	1280	1340	1542	1549	1742			120
		DISCHD	1	1308	1522	1582	1784	1791	1984			147



Weighted Trumpet Base



Weighted Disc Base



Weighted Trumpet Base  
Lounge Height



# HEAVY DUTY Specialty Tables TRAFFIC DINING

## Standard Features

- Tabletop standard in Laminate with PVC Flat (PVF), 2MM or Self Edge (SE)
- Select from 15 standard laminates or choose any standard Wilsonart, Nevamar, Formica, Arborite and Pionite matte finish laminates at no upcharge. For other laminate please contact the factory for pricing.
- PVC Flat edge and 2mm Bio edge available in 38 solid colors. 2mm PVC edge available in wood grain to match 9 standard stains.
- Floor Mounting plates
- Tamperproof fasteners
- Welded steel end caps

## Options

- 30" Bariatric seats are available. Contact factory for pricing
- Coated steel tabletop available. Contact factory for pricing
- CAL 133

Contact Spec Customer Service to railroad fabrics (specify repeat info and yardage requirement will be provided) and for repeats greater than 5" x 5"




---

## Perforated Beam without arms, without upholstered cushions

---

N/A COM per single seat

MODEL	PRICE
<b>7100NHD</b>	<b>4731</b>

Dimensions (inches)

seat H	18.0	seat W	22.0	table top	30x48	table H	29.0
total H	33.75	total W	48.0	seat depth	17.0	total depth	74

Exceeds BIFMA Seating Durability Test to 500 lbs per chair

---

## Perforated Beam without arms, with upholstered cushions

---

0.75 yd COM per single seat and back

MODEL	COM	GR 1	GR 2	GR 3	GR 4	GR 5	GR 6
<b>7100UHD</b>	<b>4807</b>	<b>4968</b>	<b>5022</b>	<b>5159</b>	<b>5322</b>	<b>5447</b>	<b>5608</b>

Dimensions (inches)

seat H	18.0	seat W	22.0	table top	30x48	table H	29.0
total H	33.75	total W	48.0	seat depth	17.0	total depth	74

Exceeds BIFMA Seating Durability Test to 500 lbs per chair

CAL 133, add \$231 List per unit

---

