

SNOWBALL 1 Public Seating



PRODUCT CODE

18 01

Series

18 : Snowball 1

Chair Type

- | | | | |
|-------------------------|--------------------------|-----------------------|------------------------|
| 01 : Four Point/Arms | 04 : 22"/4-point/Arms | 43 : 26"/Sled/No Arms | 24 : 22"/Stool/Arms |
| 11 : Four Point/No Arms | 14 : 22"/4-Point/No Arms | 02 : Casters/Arms | 26 : 22"/Stool/No Arms |
| 31 : Sled Base/Arms | 03 : 26"/4-Point/Arms | 21 : Stool/Arms | 21E : Hip Chair |
| 41 : Sled Base/No Arms | 44 : 22"/Sled/No Arms | 25 : Stool/No Arms | 24E : 22" Hip Chair |

OPTIONS

WALL-SAVING



DURASPEC SEAT



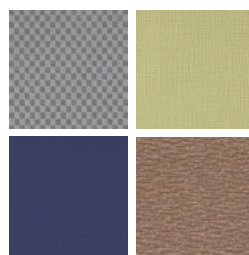
FINISHES

FRAME



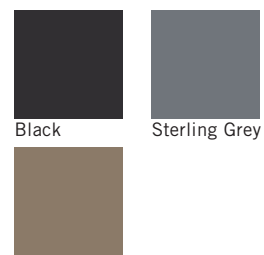
Select from one of our 76 standard Spectone colors

FABRIC



Select fabrics from one of our textile partners

ARMS



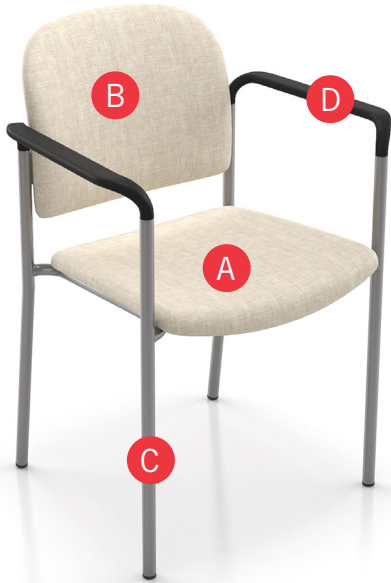
Taupe

See Spectone Card or specfurniture.com/materials/finishes for a complete list of finish options and colors.



SNOWBALL 1 Public Seating

HOW TO ORDER



Specify Model

- A** Specify Fabric - Seat
Manufacturer, Pattern Name, Color
- B** Specify Fabric - Back
Manufacturer, Pattern Name, Color
- C** Specify Frame Finish
- D** Specify Polyurethane Arm Color

Optional: CAL 133, Moisture Barrier, Wall-saving Frame, Connecting Bars, Tablet Arm, Wire Basket, DuraSpec Seat, Connecting Tables, Dolly

Restrictions may apply. See price list tables below for more information.



Model	Fabric - Seat	Fabric - Back	Frame Finish	Polyurethane Arm Color
1801	Momentum, Beeline, Canvas	Momentum, Beeline, Canvas	Silver	Black

SNOWBALL 1 Public Seating

Four-point and Sled Base

Standard Features

- 0.875" frame
- Seat and back upholstered
- Polyurethane arms available in Black (B), Sterling Grey (G) or Taupe RAL 7006 (T)
- Frame in any Spectone color
- Four-point stacks 10 high with dolly, 6 without dolly
- Sled Base does not stack and ships 1 per carton
- Ships 1/carton 11 cu ft, 2-4/carton 22 cu ft

Contact Spec Customer Service to railroad fabrics (specify repeat info and yardage requirement will be provided) and for repeats greater than 5" x 5"

Options

- Wall-saving frame on Four-point only, add \$22 List
- Connecting bars for a structured reconfigurable layout, add \$83 List
- Antibacterial and antimicrobial fabrics available
- Different fabric on seat and back at no upcharge
- Tablet Arm available on Snowballs without arms
- CAL 133
- Other glides may be available for an upcharge - call Customer Service to inquire
- DuraSpec seat is available on 18"w and 22"w chairs only - call Customer Service for pricing



Optional wall-saving frame



Optional DuraSpec seat

Snowball 1 – Four-point

COM 1.0 yd
0.5 yd COM per single seat
0.5 yd COM per single back

MODEL	COM	GR 1	GR 2	GR 3	GR 4	GR 5	GR 6
1801	308	355	370	401	448	484	530
1811	308	355	370	401	448	484	530

Dimensions (inches)

	seat H	18.0	seat W	18.0	arm H	26.0	total H	33.0
depth	21.5	total W	23.5	total W (no arms)	20.1			

Exceeds BIFMA Seating Durability Test to 500 lbs
CAL 133, add \$62 List
1" extra seat foam, specify and add \$16 List



1801
With arms
20 lbs



1811
Without arms
19 lbs

Snowball 1 – Sled Base

COM 1.0 yd
0.5 yd COM per single seat
0.5 yd COM per single back

MODEL	COM	GR 1	GR 2	GR 3	GR 4	GR 5	GR 6
1831	323	369	384	415	460	497	543
1841	323	369	384	415	460	497	543

Dimensions (inches)

	seat H	18.0	seat W	18.0	arm H	26.0	total H	33.0
depth	21.5	total W	23.5	total W (no arms)	20.1			

Exceeds BIFMA Seating Durability Test to 500 lbs
CAL 133, add \$62 List
1" extra seat foam, specify and add \$16 List



1831
With arms
23 lbs



1841
Without arms
22 lbs

SNOWBALL 1 Public Seating

Midsize and Bariatric – Four-point

Standard Features

- 0.875" frame
- Seat and back upholstered
- Polyurethane arms available in Black (B), Sterling Grey (G) or Taupe RAL 7006 (T)
- Frame in any Spectone color
- Four-point stacks 4 high on floor or with dolly
- Ships 1-3/carton 21.24 cu ft for Midsize and 1-3/ carton 24.17 cu ft for Bariatric

Contact Spec Customer Service to railroad fabrics (specify repeat info and yardage requirement will be provided) and for repeats greater than 5" x 5"

Options

- Wall-saving frame, add \$22 List
- Connecting bars for a structured reconfigurable layout, add \$83 List
- Antibacterial and antimicrobial fabrics available
- Different fabric on seat and back at no upcharge
- CAL 133
- Other glides may be available for an upcharge - call Customer Service to inquire
- DuraSpec seat is available on 18"w and 22"w chairs only - call Customer Service for pricing



Optional wall-saving frame



Optional DuraSpec seat

Snowball 1 – Midsize – Four-point

COM 1.5 yd
0.75 yd COM per single seat
0.75 yd COM per single back

MODEL	COM	GR 1	GR 2	GR 3	GR 4	GR 5	GR 6
1804	356	450	482	543	634	706	800
1814	356	450	482	543	634	706	800

Dimensions (inches)
seat H 18.0 seat W 22.0 arm H 26.0 total H 33.0
depth 22.0 total W 26.9 total W (no arms) 24.0

Exceeds BIFMA Seating Durability Test to 500 lbs
CAL 133, add \$87 List
1" extra seat foam, specify and add \$23 List



1804
With arms
22 lbs

1814
Without arms
21 lbs

Snowball 1 – Bariatric – Four-point

COM 2.0 yd
1.0 yd COM per single seat
1.0 yd COM per single back

MODEL	COM	GR 1	GR 2	GR 3	GR 4	GR 5	GR 6
1803	495	588	619	680	774	843	937

Dimensions (inches)
seat H 18.0 seat W 26.0 arm H 26.0
total H 33.0 total W 31.0 depth 22.0

Exceeds BIFMA Seating Durability Test to 500 lbs
CAL 133, add \$87 List
1" extra seat foam, specify and add \$30 List



1803
With arms
26 lbs



SNOWBALL 1 Public Seating

Midsize and Bariatric – Sled Base

Standard Features

- 0.875" frame
- Seat and back upholstered
- Frame in any Spectone color
- Does not stack
- Ships 1/carton 21 cu ft

Contact Spec Customer Service to railroad fabrics (specify repeat info and yardage requirement will be provided) and for repeats greater than 5" x 5"

Options

- Connecting bars for a structured reconfigurable layout, add \$83 List
- Antibacterial and antimicrobial fabrics available
- Different fabric on seat and back at no upcharge
- Tablet Arm available on Snowballs without arms
- CAL 133
- Other glides may be available for an upcharge - call Customer Service to inquire
- DuraSpec seat is available on 18"w and 22"w chairs only - call Customer Service for pricing.



Optional DuraSpec seat

Snowball 1 – Midsize – Sled Base

COM 1.5 yd
0.75 yd COM per single seat
0.75 yd COM per single back

MODEL	COM	GR 1	GR 2	GR 3	GR 4	GR 5	GR 6
1844	391	487	516	578	672	742	835

Dimensions (inches)

	seat H	18.0	seat W	22.0	arm H	N/A
total H	33.0	total W	24.0	depth	22.0	

Exceeds BIFMA Seating Durability Test to 500 lbs
CAL 133, add \$87 List
1" extra seat foam, specify and add \$23 List



1844
Without arms
22 lbs

Snowball 1 – Bariatric – Sled Base

COM 2.0 yd
1.0 yd COM per single seat
1.0 yd COM per single back

MODEL	COM	GR 1	GR 2	GR 3	GR 4	GR 5	GR 6
1843	530	623	654	716	809	880	973

Dimensions (inches)

	seat H	18.0	seat W	26.0	arm H	N/A
total H	33.0	total W	28.0	depth	22.0	

Exceeds BIFMA Seating Durability Test to 500 lbs
CAL 133, add \$87 List
1" extra seat foam, specify and add \$30 List



1843
Without arms
27 lbs



SNOWBALL 1 Public Seating

Casters

Standard Features

- 0.875" frame
- Seat and back upholstered
- Polyurethane arms available in Black (B), Sterling Grey (G) or Taupe RAL 7006 (T)
- Frame in any Spectone color
- Black non-locking casters
- Four-point stacks 10 high with dolly, 6 without dolly
- Ships 1/carton 11 cu ft, 2-3/carton 22 cu ft

Contact Spec Customer Service to railroad fabrics (specify repeat info and yardage requirement will be provided) and for repeats greater than 5" x 5"

Options

- Antibacterial and antimicrobial fabrics available
- Different fabric on seat and back at no upcharge
- Armless and sled base versions not available
- CAL 133
- DuraSpec seat is available on 18"w and 22"w chairs only - call Customer Service for pricing.



Optional DuraSpec seat

Snowball 1 – Casters

COM 1.0 yd
 0.5 yd COM per single seat
 0.5 yd COM per single back

MODEL	COM	GR 1	GR 2	GR 3	GR 4	GR 5	GR 6
1802	426	474	489	519	566	601	649

Dimensions (inches)

seat H	18.0	seat W	18.5	arm H	26.0
total H	33.0	total W	23.5	depth	21.5

Exceeds BIFMA Seating Durability Test to 500 lbs
 CAL 133, add \$62 List
 1" extra seat foam, specify and add \$16 List



1802
With arms
 19 lbs



SNOWBALL 1 Public Seating

Stools

Standard Features

- 0.875" frame
- Seat and back upholstered
- Polyurethane arms available in Black (B), Sterling Grey (G) or Taupe RAL 7006 (T)
- Frame in any Spectone color
- Does not stack
- Ships 1/carton 17 cu ft

Options

- Antibacterial and antimicrobial fabrics available
- Different fabric on seat and back at no upcharge
- Casters, sled base not available
- CAL 133
- Other glides may be available for an upcharge - call Customer Service to inquire
- DuraSpec seat is available on 18"w and 22"w chairs only - call Customer Service for pricing.

Contact Spec Customer Service to railroad fabrics (specify repeat info and yardage requirement will be provided) and for repeats greater than 5" x 5"



Optional DuraSpec seat

Snowball 1 – Stools

COM 1.0 yd
0.5 yd COM per single seat
0.5 yd COM per single back

MODEL	COM	GR 1	GR 2	GR 3	GR 4	GR 5	GR 6
1821	414	460	476	508	555	589	636
1825	414	460	476	508	555	589	636

Dimensions (inches)

	seat H	28.0	seat W	18.0	arm H	36.0	total H	43.5
depth	21.5	total W	23.5	total W (no arms)	20.1			

Exceeds BIFMA Seating Durability Test to 500 lbs
CAL 133, add \$62 List
1" extra seat foam, specify and add \$16 List



1821
With arms
23 lbs



1825
Without arms
22 lbs

Snowball 1 – Midsize Stools

COM 1.5 yd
0.75 yd COM per single seat
0.75 yd COM per single back

MODEL	COM	GR 1	GR 2	GR 3	GR 4	GR 5	GR 6
1824	493	589	619	681	773	843	937
1826	493	589	619	681	773	843	937

Dimensions (inches)

	seat H	28.0	seat W	22.0	arm H	36.0	total H	43.5
depth	22.0	total W	26.9	total W (no arms)	24.0			

Exceeds BIFMA Seating Durability Test to 500 lbs
CAL 133, add \$87 List
1" extra seat foam, specify and add \$23 List



1824
With arms
25 lbs



1826
Without arms
24 lbs



SNOWBALL 1 Public Seating

Easy Access Hip Single Seater

Standard Features

- 0.875" frame
- Seat and back upholstered
- Polyurethane arms available in Black (B), Sterling Grey (G) or Taupe RAL 7006 (T)
- Frame in any Spectone color
- Does not stack
- Ships 1/carton 19 cu ft

Contact Spec Customer Service to railroad fabrics (specify repeat info and yardage requirement will be provided) and for repeats greater than 5" x 5"

Options

- Antibacterial and antimicrobial fabrics available
- Different fabric on seat and back at no upcharge
- Casters, sled base not available
- CAL 133
- Other glides may be available for an upcharge - call Customer Service to inquire
- DuraSpec seat is available on 18"w and 22"w chairs only - call Customer Service for pricing.



Optional DuraSpec seat

Snowball 1 – Easy Access Hip Single Seater

COM 1.0 yd
0.5 yd COM per single seat
0.5 yd COM per single back

MODEL	COM	GR 1	GR 2	GR 3	GR 4	GR 5	GR 6
1821E	451	497	513	544	592	625	673

Dimensions (inches)

seat H	24.0	seat W	18.0	arm H	32.0
total H	38.5	total W	23.5	depth	31.0

Exceeds BIFMA Seating Durability Test to 500 lbs
CAL 133, add \$62 List
1" extra seat foam, specify and add \$16 List



1821E
With arms
32 lbs

Snowball 1 – Midsize Easy Access Hip Single Seater

COM 1.5 yd
0.75 yd COM per single seat
0.75 yd COM per single back

MODEL	COM	GR 1	GR 2	GR 3	GR 4	GR 5	GR 6
1824E	538	632	664	725	816	888	981

Dimensions (inches)

seat H	24.0	seat W	22.0	arm H	32.0
total H	38.5	total W	26.9	depth	31.0

Exceeds BIFMA Seating Durability Test to 500 lbs
CAL 133, add \$87 List
1" extra seat foam, specify and add \$23 List



1824E
With arms
34 lbs



SNOWBALL 1 Public Seating

Dolly

Standard Features

- Black finish only
- 2" black swivel casters
- Standard Dolly stacks 10 chairs
- Midsize Dolly stacks 4 chairs
- Bariatric Dolly stacks 4 chairs
- Ships 1/carton 17 cu ft

Options

- Please specify if Dolly is for chairs with wall-saving frame



Standard and Midsize available on Spec 10 Day Program



Snowball 1 – Dolly

DESCRIPTION	MODEL	PRICE
Standard	1899	335
22" Midsize	1899M	485
26" Bariatric	1899G	485

Dimensions (inches)

Standard		Midsize / Bariatric	
height	36.5	height	36.5
width	21.0	width	23.0
depth	31.0	depth	42.0



1899
Standard
18 lbs



1899G/1899M
Midsize/Bariatric
24 lbs

SNOWBALL 1 Public Seating

Connected and Tables

To order connected Snowballs

- Select and price the Snowballs required for your configuration
- Select and price the corner, spacer and end tables required
- Add Snowball connecting bars (between chairs only). Do not add connecting bars for tables (they are part of the table)
- Send a drawing with your order or call Spec for assistance

Snowball Tables

- Table top is 3/4" thick
- Self Edge, PVC Flat and 2mm edge available. PVC Flat edge and 2 mm Bio edge available in 38 solid colors. 2mm PVC edge available in wood grain to match 9 standard stains.
- Select laminate tops from 15 standard laminates or choose any standard Wilsonart, Nevamar, Formica, Arborite and Pionite matte finish laminates at no upcharge.

Connecting bars and tables can be retrofitted, allowing you to change configurations later or create new configurations from your present Snowballs






Connecting bars can be added to any Snowball chair, including Bariatric and Midsize

Connecting bars and table frame bars are finished in the same color as the color of the chair frames

Connecting bars are fastened to the underside of the Snowball chair frame at the front and back



Snowball 1 – Connected and Tables

					
DESCRIPTION	Corner Table	Spacer Table	Mini Spacer Table	End Table*	Connecting Bars
MODEL	18RC	18ST	18MT	18ET	18CON
DIMENSIONS (inches)	25 x 25	17 x 17	4.5 x 14.5	17 x 17	N/A
PRICE	347	238	130	244	83

*End table is handed, provide layout

SNOWBALL 1 Public Seating

Tablet Arms and Wire Basket

Tablet Arm

- Fits any Snowball, freestanding or within a configuration
- Standard or laptop size available
- Right and left handed versions (defined when sitting in chair), add TR for right handed or TL for left handed to model number
- Laminated on both sides, standard in Wilsonart Dove Grey D-92-60 with flat black PVC edge. For other laminate please contact the factory for pricing
- Tablet constructed of 3/4" NU Green earth friendly core
- Snowball with Tablet Arm is standard with no arm on opposite side
- Add price of Tablet Arm to your Snowball selection

Wire Basket

- Add to any 18" wide Snowball
- Black
- Removable



Note: We do not recommend stacking Snowballs that have tablet arms



Snowball 1 – Tablet Arms and Wire Basket



DESCRIPTION
MODEL
PRICE

Standard Tablet Arm
TR (right) or TL (left)
241

Laptop Tablet Arm
LTR (right) or LTL (left)
275

Wire Basket
WB
Call For Pricing

Dimensions (inches)

height 27.5
width 12.75
total W 24.5
length 24.0
tablet extends 6" from seat

height 27.5
width 16.0
total W 24.5
length 24.75
tablet extends 7" from seat



SNOWBALL 1 Public Seating

10 Day Program

Standard Features

- Black polyurethane arms
- Black or silver frame finish
- See 10 Day Quickship price list or Spec website for the selection of quick ship textiles
- 10 Day Program quantity limit of 20 chairs per order

Options

- Snowball Dolly stacks 18”w Four-point Snowballs up to 10 high

For information on the 10 Day Program guarantee and terms and conditions, visit our website and go to 10 Day Quickship, Terms & Conditions tab.

Snowball 1

COM 1.0 yd
 0.5 yd COM per single seat
 0.5 yd COM per single back

MODEL	COM	GR 1	GR 2
1801	308	355	370
1811	308	355	370
1804	356	450	482



1801
With arms
20 lbs



1811
Without arms
19 lbs



1804
With arms
22 lbs

Snowball 1 – Dolly

DESCRIPTION	MODEL	PRICE
Standard	1899	335
22” Midsize	1899M	485

Dimensions (inches)

	Standard	Midsize
height	36.5	36.5
width	21.0	23.0
depth	31.0	42.0



1899
Standard
18 lbs



1899M
Midsize
24 lbs

