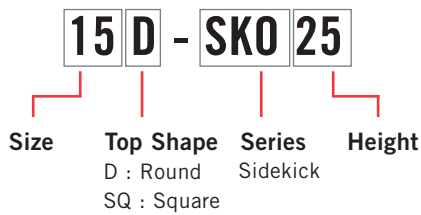


SIDEKICK TABLES



PRODUCT CODE

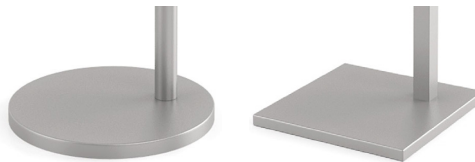


OPTIONS

UPHOLSTERY CAP



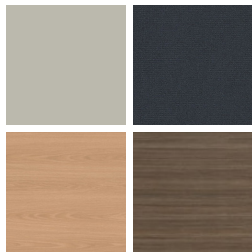
BASE SHAPE*



*Table top shape determines base shape.

FINISHES

LAMINATE



Select from 15 standard laminates or choose any standard Wilsonart, Nevamar, Formica, Arborite and Pionite matte finish laminates for no extra charge

VENEER



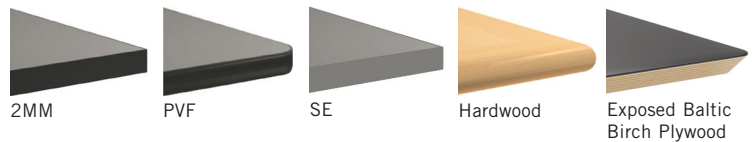
Select from one of our 9 standard wood stains or stain-to-match for no extra charge

BASE



Select from one of our 76 standard Spectone colors

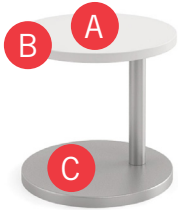
EDGE



See Spectone Card or specfurniture.com/materials/finishes for a complete list of finish options and colors.

SIDEKICK TABLES

HOW TO ORDER



Specify Top Size and Shape

- A** Specify Top Type and Finish
For Laminate Top: Manufacturer, Laminate Name, Laminate Code
For Veneer Top: Wood Species & Stain
- B** Specify Edge Type, (for hardwood: Style), and Finish
PVF/2mm/Self Edge/Exposed Baltic Birch Plywood/Hardwood
- C** Specify Base Style and Finish

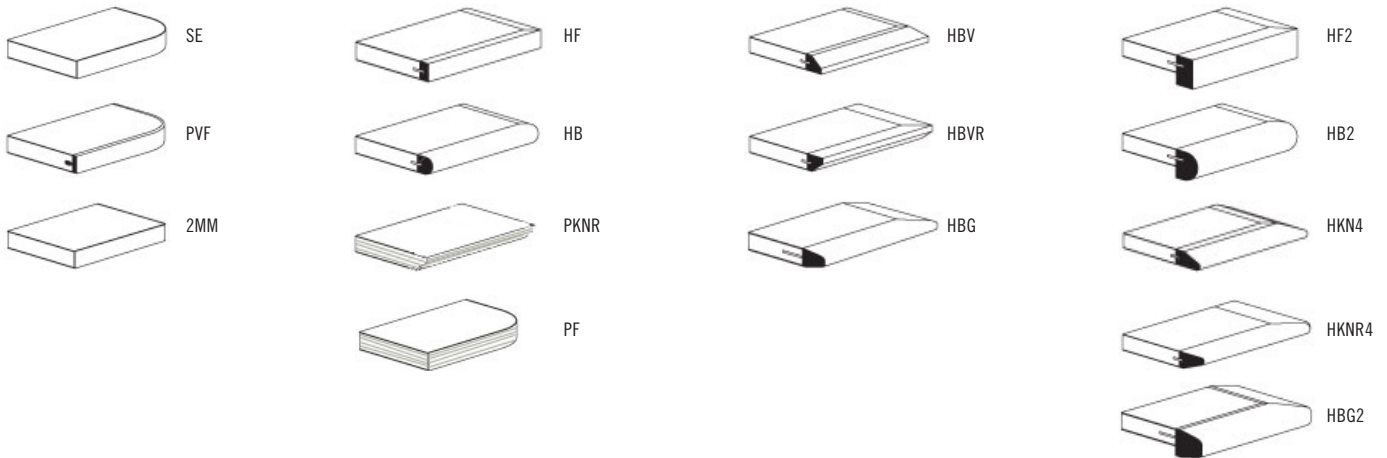
Optional: Upholstery Cap

Restrictions may apply. See price list tables below for more information.

Top Size and Shape	Top Type and Finish	Edge Type and Finish	Base Style and Finish
18D, Round	Laminate, Wilsonart, Designer White, D354-60	2mm Bio, RAL 9016	SKO22, Silver



EDGE PROFILES





SIDEKICK TABLES OCCASIONAL



SIZE	MODEL <i>Code</i>	DESCRIPTION	BASE <i>Qty.</i>	TOP SPECIFICATIONS						OPTION UPHOLSTERY CAP <i>Add</i>	LBS
				<i>For Laminate Top</i>			<i>For Veneer Top</i>				
				SE PVF 2MM	HF HB PKNR ¹ PF ¹	HBV HBVR HBG	HF2 HB2 HKN4 HBG2	HF HB HBV HBG	HF2 HB2 HKN4 HBG2		
<i>Round</i>											
15	15D-SK018	15" Round Top with 18" High Offset Base	1	557	875	911	1001	1053	1152	56	26
	15D-SK022	15" Round Top with 22" High Offset Base	1	557	875	911	1001	1053	1152	56	26
	15D-SK025	15" Round Top with 25" High Offset Base	1	557	875	911	1001	1053	1152	-	26
18	18D-SK018	18" Round Top with 18" High Offset Base	1	613	945	982	1079	1133	1235	56	33
	18D-SK022	18" Round Top with 22" High Offset Base	1	613	945	982	1079	1133	1235	56	33
	18D-SK025	18" Round Top with 25" High Offset Base	1	613	945	982	1079	1133	1235	-	33
22	22D-SK018	22" Round Top with 18" High Offset Base	1	708	1032	1069	1166	1220	1322	-	44
	22D-SK022	22" Round Top with 22" High Offset Base	1	708	1032	1069	1166	1220	1322	-	44
	22D-SK025	22" Round Top with 25" High Offset Base	1	708	1032	1069	1166	1220	1322	-	44
<i>Square</i>											
15	15SQ-SK018	15" Square Top with 18" High Offset Base	1	525	705	738	799	838	983	-	26
	15SQ-SK022	15" Square Top with 22" High Offset Base	1	525	705	738	799	838	983	-	27
	15SQ-SK025	15" Square Top with 25" High Offset Base	1	525	705	738	799	838	983	-	27
18	18SQ-SK018	18" Square Top with 18" High Offset Base	1	585	774	808	871	914	1066	-	34
	18SQ-SK022	18" Square Top with 22" High Offset Base	1	585	774	808	871	914	1066	-	35
	18SQ-SK025	18" Square Top with 25" High Offset Base	1	585	774	808	871	914	1066	-	35
22	22SQ-SK018	22" Square Top with 18" High Offset Base	1	679	860	894	957	1000	1152	-	47
	22SQ-SK022	22" Square Top with 22" High Offset Base	1	679	860	894	957	1000	1152	-	47
	22SQ-SK025	22" Square Top with 25" High Offset Base	1	679	860	894	957	1000	1152	-	48

¹ Exposed Baltic Birch plywood edge (PKNR, PF) can only be specified on square tops up to 47-1/2" x 95-1/2". Clear finish only.



STANDARD FEATURES

- Available in 15", 18" and 22" round or square tops at 18", 22" and 25" heights.
- Round Base and offset column is used with round tops.
- Square Base and offset column is used with square tops.
- Select from 15 standard laminates or choose any standard Wilsonart, Nevamar, Formica, Arborite and Pionite matte finish laminates for no extra charge. For other laminate please contact the factory for pricing.
- 9 standard veneer and hardwood edge stains. Stain-to-match available for no extra charge.
- Base and column available in any of 76 Spectone colors.
- Levelling glides
- Meets BIFMA Seating Durability Test to 300 lbs.

OPTION

- Upholstery cap is available on some models.

HOW TO ORDER

1. Select Model
2. Select Edge Style
3. Select Option
4. Select Top Finish
5. Select Edge Finish
6. Select Base Finish

Example: 15D-SK018-PVF-

