



Pricing March 1, 2019
Discount 57.7% from List prices

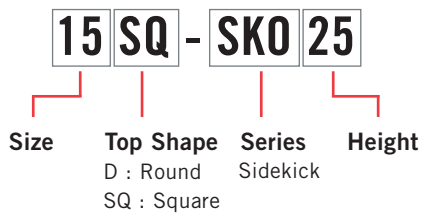


SIN 711-11

SIDEKICK TABLES



PRODUCT CODE

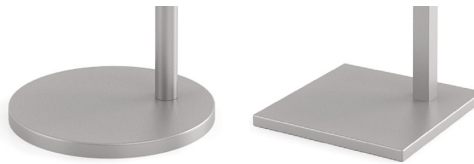


OPTIONS

UPHOLSTERY CAP



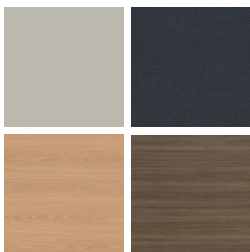
BASE SHAPE*



*Table top shape determines base shape.

FINISHES

LAMINATE



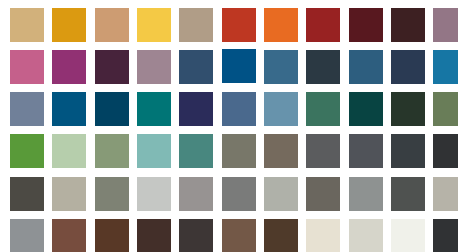
Select from 15 standard laminates or choose any standard Wilsonart, Nevamar, Formica, Arborite and Pionite matte finish laminates at no upcharge

VENEER



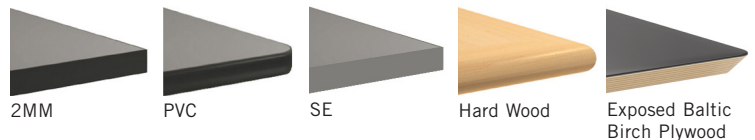
Select from one of our 9 standard wood stains or stain-to-match at no upcharge

BASE



Select from one of our 76 standard Spectone colors

EDGE



See Spectone Card or specfurniture.com/materials/finishes for a complete list of finish options and colors.



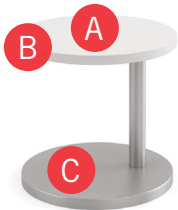
Pricing March 1, 2019
Discount 57.7% from List prices



SIN 711-11

SIDEKICK TABLES

HOW TO ORDER



Specify Top Size and Shape

- A** Specify Top Type and Finish
For Laminate Top: Manufacturer, Laminate Name, Laminate Code
For Veneer Top: Wood Stain
- B** Specify Edge Type, (for hardwood: Style), and Finish
PVC/2mm/Self Edge/Exposed Baltic Birch Plywood/Hardwood
- C** Specify Base Style and Finish

Optional: Upholstery Cap

Restrictions may apply. See price list tables below for more information.

Top Size and Shape	Top Type and Finish	Edge Type and Finish	Base Style and Finish
18D, Round	Laminate, Wilsonart, Designer White, D354-60	2mm Bio, RAL 9016	SKO22, Silver



EDGE PROFILES



SE



PF



HB



HBV



HF2



PVF



PKNR



HF



HBVR



HB2



2MM



HBG



HKN4



HKNR4



HBG2



Pricing March 1, 2019
Discount 57.7% from List prices



SIN 711-11

SIDEKICK TABLES OCCASIONAL



SIZE	MODEL	DESCRIPTION	BASE	TOP SPECIFICATIONS						OPTION	LBS
				For Laminate Top			For Veneer Top				
	Code		Qty.	SE PVF 2MM	HF HB PKNR ¹ PF ¹	HBV HBVR HBG	HF2 HB2 HKN4 HKNR4 HBG2	HF HB HBV HBG	HF2 HB2 HKN4 HKNR4 HBG2	UPHOLSTERY CAP Add	
<i>Round</i>											
15	15D-SK018	15" Round Top with 18" High Offset Base	1	617	955	990	1090	1144	1247	49	26
	15D-SK022	15" Round Top with 22" High Offset Base	1	617	955	990	1090	1144	1247	49	26
	15D-SK025	15" Round Top with 25" High Offset Base	1	617	955	990	1090	1144	1247		26
18	18D-SK018	18" Round Top with 18" High Offset Base	1	681	1038	1074	1179	1235	1343	49	33
	18D-SK022	18" Round Top with 22" High Offset Base	1	681	1038	1074	1179	1235	1343	49	33
	18D-SK025	18" Round Top with 25" High Offset Base	1	681	1038	1074	1179	1235	1343		33
22	22D-SK018	22" Round Top with 18" High Offset Base	1	789	1135	1171	1276	1332	1440		44
	22D-SK022	22" Round Top with 22" High Offset Base	1	789	1135	1171	1276	1332	1440		44
	22D-SK025	22" Round Top with 25" High Offset Base	1	789	1135	1171	1276	1332	1440		44
<i>Square</i>											
15	15SQ-SK018	15" Square Top with 18" High Offset Base	1	585	777	811	873	918	1070		26
	15SQ-SK022	15" Square Top with 22" High Offset Base	1	585	777	811	873	918	1070		27
	15SQ-SK025	15" Square Top with 25" High Offset Base	1	585	777	811	873	918	1070		27
18	18SQ-SK018	18" Square Top with 18" High Offset Base	1	647	845	881	946	994	1155		34
	18SQ-SK022	18" Square Top with 22" High Offset Base	1	647	845	881	946	994	1155		35
	18SQ-SK025	18" Square Top with 25" High Offset Base	1	647	845	881	946	994	1155		35
22	22SQ-SK018	22" Square Top with 18" High Offset Base	1	756	944	980	1045	1093	1254		47
	22SQ-SK022	22" Square Top with 22" High Offset Base	1	756	944	980	1045	1093	1254		47
	22SQ-SK025	22" Square Top with 25" High Offset Base	1	756	944	980	1045	1093	1254		48



¹ Exposed Baltic Birch plywood edge (PKNR, PF) can only be specified on square tops up to 47-1/2" x 95-1/2". Clear finish only.



STANDARD FEATURES

- Available in 15", 18" and 22" round or square tops at 18", 22" and 25" heights.
- Round Base and offset column is used with round tops.
- Square Base and offset column is used with square tops.
- Select from 15 standard laminates or choose any standard Wilsonart, Nevamar, Formica, Arborite and Pionite matte finish laminates at no upcharge. For other laminate please contact the factory for pricing.
- 9 standard veneer and hardwood edge stains. Stain-to-match available at no upcharge.
- Base and column available in any of 76 Spectone colors.
- Levelling glides
- Exceeds BIFMA Seating Durability Test to 300 lbs.

OPTION

- Upholstery cap is available on some models.

HOW TO ORDER

1. Select Model
2. Select Edge Style
3. Select Option
4. Select Top Finish
5. Select Edge Finish
6. Select Base Finish

Example: 15D-SK018-PVF-

