



Pricing March 1, 2020  
Discount 57.7% from List prices

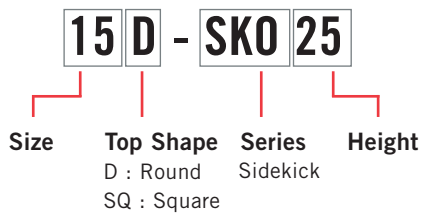


MAS SIN 33721

# SIDEKICK TABLES



## PRODUCT CODE

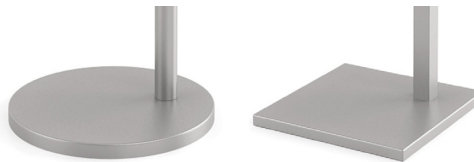


## OPTIONS

### UPHOLSTERY CAP



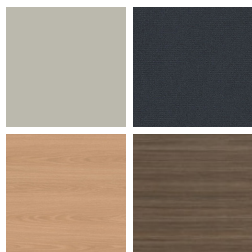
### BASE SHAPE\*



\*Table top shape determines base shape.

## FINISHES

### LAMINATE



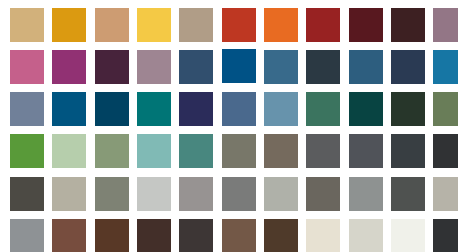
Select from 15 standard laminates or choose any standard Wilsonart, Nevamar, Formica, Arborite and Pionite matte finish laminates at no upcharge

### VENEER



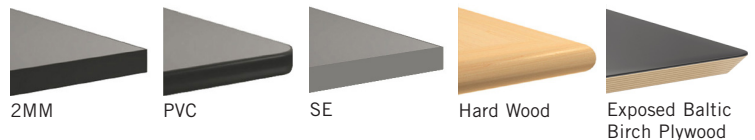
Select from one of our 9 standard wood stains or stain-to-match at no upcharge

### BASE



Select from one of our 76 standard Spectone colors

### EDGE



See Spectone Card or [specfurniture.com/materials/finishes](http://specfurniture.com/materials/finishes) for a complete list of finish options and colors.



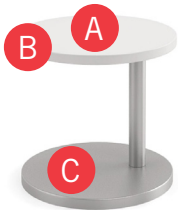
Pricing March 1, 2020  
Discount 57.7% from List prices



MAS SIN 33721

# SIDEKICK TABLES

## HOW TO ORDER



### Specify Top Size and Shape

- A** Specify Top Type and Finish  
*For Laminate Top: Manufacturer, Laminate Name, Laminate Code*  
*For Veneer Top: Wood Stain*
- B** Specify Edge Type, (for hardwood: Style), and Finish  
*PVC/2mm/Self Edge/Exposed Baltic Birch Plywood/Hardwood*
- C** Specify Base Style and Finish

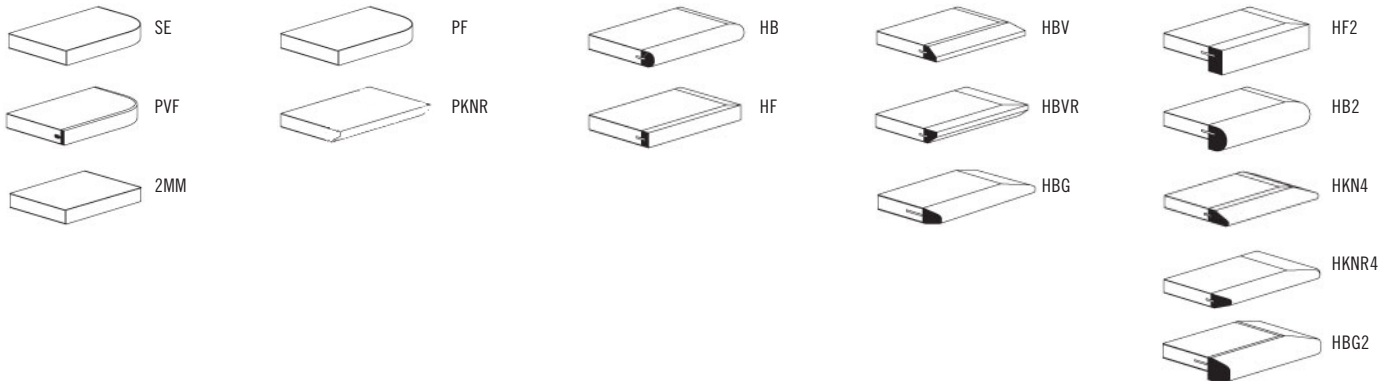
Optional: Upholstery Cap

Restrictions may apply. See price list tables below for more information.

Top Size and Shape	Top Type and Finish	Edge Type and Finish	Base Style and Finish
18D, Round	Laminate, Wilsonart, Designer White, D354-60	2mm Bio, RAL 9016	SKO22, Silver



## EDGE PROFILES





Pricing March 1, 2020  
Discount 57.7% from List prices



MAS SIN 33721

# SIDEKICK TABLES OCCASIONAL



SIZE	MODEL	DESCRIPTION	BASE	TOP SPECIFICATIONS						OPTION	LBS
				For Laminate Top			For Veneer Top				
	Code		Qty.	SE PVF 2MM	HF HB PKNR <sup>1</sup> PF <sup>1</sup>	HBV HBVR HBG	HF2 HB2 HKN4 HKNR4 HBG2	HF HB HBV HBG	HF2 HB2 HKN4 HKNR4 HBG2	UPHOLSTERY CAP  Add	
<i>Round</i>											
15	15D-SK018	15" Round Top with 18" High Offset Base	1	642	994	1030	1134	1190	1297	51	26
	15D-SK022	15" Round Top with 22" High Offset Base	1	642	994	1030	1134	1190	1297	51	26
	15D-SK025	15" Round Top with 25" High Offset Base	1	642	994	1030	1134	1190	1297		26
18	18D-SK018	18" Round Top with 18" High Offset Base	1	708	1080	1117	1226	1285	1397	51	33
	18D-SK022	18" Round Top with 22" High Offset Base	1	708	1080	1117	1226	1285	1397	51	33
	18D-SK025	18" Round Top with 25" High Offset Base	1	708	1080	1117	1226	1285	1397		33
22	22D-SK018	22" Round Top with 18" High Offset Base	1	821	1181	1218	1327	1386	1498		44
	22D-SK022	22" Round Top with 22" High Offset Base	1	821	1181	1218	1327	1386	1498		44
	22D-SK025	22" Round Top with 25" High Offset Base	1	821	1181	1218	1327	1386	1498		44
<i>Square</i>											
15	15SQ-SK018	15" Square Top with 18" High Offset Base	1	608	808	843	908	954	1113		26
	15SQ-SK022	15" Square Top with 22" High Offset Base	1	608	808	843	908	954	1113		27
	15SQ-SK025	15" Square Top with 25" High Offset Base	1	608	808	843	908	954	1113		27
18	18SQ-SK018	18" Square Top with 18" High Offset Base	1	673	879	916	984	1034	1201		34
	18SQ-SK022	18" Square Top with 22" High Offset Base	1	673	879	916	984	1034	1201		35
	18SQ-SK025	18" Square Top with 25" High Offset Base	1	673	879	916	984	1034	1201		35
22	22SQ-SK018	22" Square Top with 18" High Offset Base	1	786	982	1019	1087	1137	1304		47
	22SQ-SK022	22" Square Top with 22" High Offset Base	1	786	982	1019	1087	1137	1304		47
	22SQ-SK025	22" Square Top with 25" High Offset Base	1	786	982	1019	1087	1137	1304		48



<sup>1</sup> Exposed Baltic Birch plywood edge (PKNR, PF) can only be specified on square tops up to 47-1/2" x 95-1/2". Clear finish only.



## STANDARD FEATURES

- Available in 15", 18" and 22" round or square tops at 18", 22" and 25" heights.
- Round Base and offset column is used with round tops.
- Square Base and offset column is used with square tops.
- Select from 15 standard laminates or choose any standard Wilsonart, Nevamar, Formica, Arborite and Pionite matte finish laminates at no upcharge. For other laminate please contact the factory for pricing.
- 9 standard veneer and hardwood edge stains. Stain-to-match available at no upcharge.
- Base and column available in any of 76 Spectone colors.
- Levelling glides
- Exceeds BIFMA Seating Durability Test to 300 lbs.

## OPTION

- Upholstery cap is available on some models.

## HOW TO ORDER

1. Select Model
2. Select Edge Style
3. Select Option
4. Select Top Finish
5. Select Edge Finish
6. Select Base Finish

Example: 15D-SK018-PVF-

