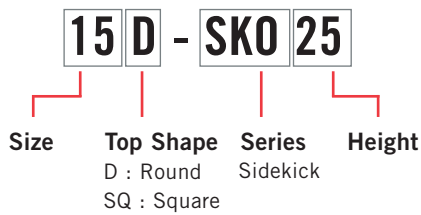


# SIDEKICK TABLES



## PRODUCT CODE

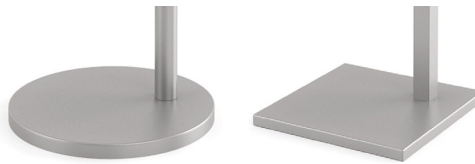


## OPTIONS

### UPHOLSTERY CAP



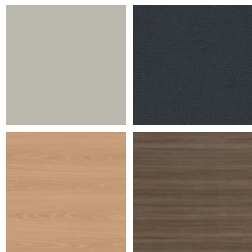
### BASE SHAPE\*



\*Table top shape determines base shape.

## FINISHES

### LAMINATE



Select from 15 standard laminates or choose any standard Wilsonart, Nevamar, Formica, Arborite and Pionite matte finish laminates for no extra charge

### VENEER



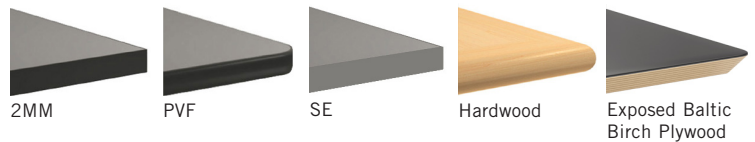
Select from one of our 9 standard wood stains or stain-to-match for no extra charge

### BASE



Select from one of our 76 standard Spectone colors

### EDGE

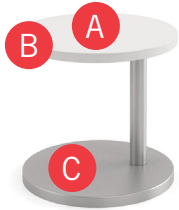


See Spectone Card or [specfurniture.com/materials/finishes](http://specfurniture.com/materials/finishes) for a complete list of finish options and colors.



# SIDEKICK TABLES

## HOW TO ORDER



### Specify Top Size and Shape

- A** Specify Top Type and Finish  
*For Laminate Top: Manufacturer, Laminate Name, Laminate Code*  
*For Veneer Top: Wood Species & Stain*
- B** Specify Edge Type, (for hardwood: Style), and Finish  
*PVF/2mm/Self Edge/Exposed Baltic Birch Plywood/Hardwood*
- C** Specify Base Style and Finish

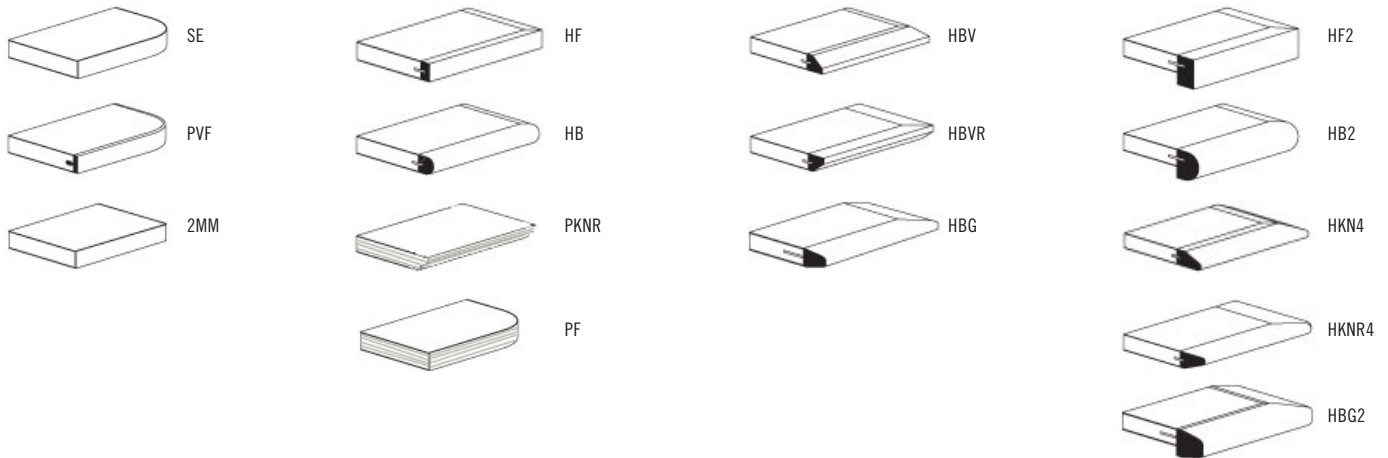
Optional: Upholstery Cap

Restrictions may apply. See price list tables below for more information.

Top Size and Shape	Top Type and Finish	Edge Type and Finish	Base Style and Finish
18D, Round	Laminate, Wilsonart, Designer White, D354-60	2mm Bio, RAL 9016	SKO22, Silver



## EDGE PROFILES





# SIDEKICK TABLES OCCASIONAL



SIZE	MODEL	DESCRIPTION	BASE	TOP SPECIFICATIONS						OPTION	LBS
				For Laminate Top			For Veneer Top				
	Code		Qty.	SE PVF 2MM	HF HB PKNR <sup>1</sup> PF <sup>1</sup>	HBV HBVR HBG	HF2 HB2 HKN4 HBG2	HF HB HBV HBG	HF2 HB2 HKN4 HBG2	UPHOLSTERY CAP  Add	
<i>Round</i>											
15	15D-SK018	15" Round Top with 18" High Offset Base	1	655	1014	1051	1157	1214	1323	52	26
	15D-SK022	15" Round Top with 22" High Offset Base	1	655	1014	1051	1157	1214	1323	52	26
	15D-SK025	15" Round Top with 25" High Offset Base	1	655	1014	1051	1157	1214	1323		26
18	18D-SK018	18" Round Top with 18" High Offset Base	1	722	1102	1140	1251	1311	1425	52	33
	18D-SK022	18" Round Top with 22" High Offset Base	1	722	1102	1140	1251	1311	1425	52	33
	18D-SK025	18" Round Top with 25" High Offset Base	1	722	1102	1140	1251	1311	1425		33
22	22D-SK018	22" Round Top with 18" High Offset Base	1	838	1205	1243	1354	1414	1528		44
	22D-SK022	22" Round Top with 22" High Offset Base	1	838	1205	1243	1354	1414	1528		44
	22D-SK025	22" Round Top with 25" High Offset Base	1	838	1205	1243	1354	1414	1528		44
<i>Square</i>											
15	15SQ-SK018	15" Square Top with 18" High Offset Base	1	620	824	859	926	973	1135		26
	15SQ-SK022	15" Square Top with 22" High Offset Base	1	620	824	859	926	973	1135		27
	15SQ-SK025	15" Square Top with 25" High Offset Base	1	620	824	859	926	973	1135		27
18	18SQ-SK018	18" Square Top with 18" High Offset Base	1	686	896	934	1003	1054	1225		34
	18SQ-SK022	18" Square Top with 22" High Offset Base	1	686	896	934	1003	1054	1225		35
	18SQ-SK025	18" Square Top with 25" High Offset Base	1	686	896	934	1003	1054	1225		35
22	22SQ-SK018	22" Square Top with 18" High Offset Base	1	802	1002	1040	1109	1160	1331		47
	22SQ-SK022	22" Square Top with 22" High Offset Base	1	802	1002	1040	1109	1160	1331		47
	22SQ-SK025	22" Square Top with 25" High Offset Base	1	802	1002	1040	1109	1160	1331		48



<sup>1</sup> Exposed Baltic Birch plywood edge (PKNR, PF) can only be specified on square tops up to 47-1/2" x 95-1/2". Clear finish only.



### STANDARD FEATURES

- Available in 15", 18" and 22" round or square tops at 18", 22" and 25" heights.
- Round Base and offset column is used with round tops.
- Square Base and offset column is used with square tops.
- Select from 15 standard laminates or choose any standard Wilsonart, Nevamar, Formica, Arborite and Pionite matte finish laminates for no extra charge. For other laminate please contact the factory for pricing.
- 9 standard veneer and hardwood edge stains. Stain-to-match available for no extra charge.
- Base and column available in any of 76 Spectone colors.
- Levelling glides
- Meets BIFMA Seating Durability Test to 300 lbs.

### OPTION

- Upholstery cap is available on some models.

### HOW TO ORDER

1. Select Model
2. Select Edge Style
3. Select Option
4. Select Top Finish
5. Select Edge Finish
6. Select Base Finish

Example: 15D-SK018-PVF-

