

TAILGATE TABLES



PRODUCT CODE



Series	Top Size	Top Shape	Series	Base	Finish
Tailgate	Width x	B : Bullet	Tailgate	RE : Rectangle Plinth	L : Laminate
Freestanding	Length	RE : Rectangle	Freestanding	SQ : Square Plinth	V : Veneer
		RT : Racetrack		MNT2 : Manhattan Rect	
		BT : Boatshape		Double Column	
		REA : Rectangle		MRT2 : Manhattan Round	
		Arc Ends		Double Column	
		BTA : Boatshape Arc			
		Ends			
		EL : Ellipse			
		VC : Video			
		Conference			
		VCA : Video			
		Conference Arc Ends			

OPTIONS

BASES



Manhattan Round Double Column
 Manhattan Rectangular Double Column
 Plinth Base

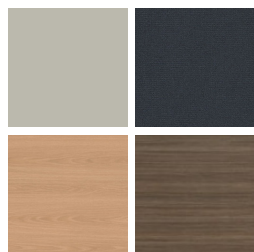
VERTICAL WIRE MANAGER



Oval Vertical Wire Manager, with hinge door (shown on both columns)
 Rectangular Vertical Wire Manager, with removable door (shown on both columns)

FINISHES

LAMINATE



Select from 15 standard laminates or choose any standard Wilsonart, Nevamar, Formica, Arborite and Pionite matte finish laminates at no upcharge

VENEER



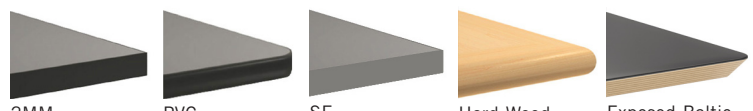
Select from one of our 9 standard wood stains or stain-to-match at no upcharge

BASE



Select from one of our 76 standard Spectone colors

EDGE



2MM
 PVC
 SE
 Hard Wood
 Exposed Baltic Birch Plywood

See Spectone Card or specfurniture.com/materials/finishes for a complete list of finish options and colors.

TAILGATE TABLES

HOW TO ORDER



Specify Series, Top Size (Width x Length) and Shape

- A** Specify Top Type and Finish
For Laminate Top: Manufacturer, Laminate Name, Laminate Code
For Veneer Top: Wood Stain
- B** Specify Edge Type, (for hardwood: Style), and Finish
PVC Flat/2mm Bio/2mm PVC Woodgrain/Self Edge/Hardwood
- C** Specify Base Style and Finish
For Laminate Base: Manufacturer, Laminate Name, Laminate Code
For Veneer Base: Wood Stain
For Metal Base: RAL Finish
 Optional: Vertical Wire Managers, Power and Data Modules

Series, Top Size and Shape	Top Finish	Edge Finish	Base Style and Finish	VWM Finish (if applicable)	Trough Size and Finish
TG, 55 x 66, Rectangle	Laminate, Arborite, Brown Sugar	Hardwood, HF, Custom Brown Sugar Stain	TGRE-L, Veneer, Arborite, Brown Sugar	n/a	40", Silver

EDGE PROFILES

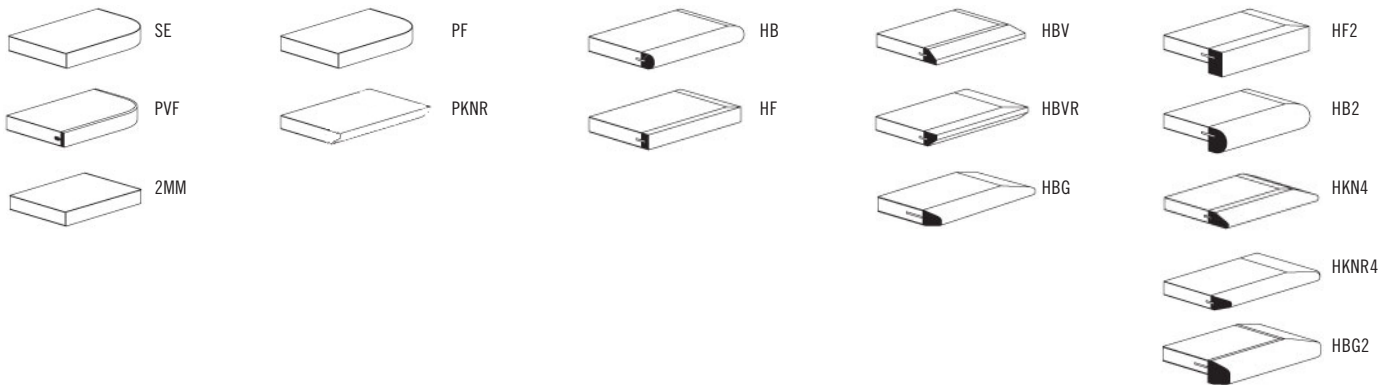
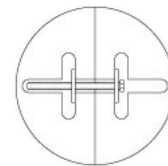
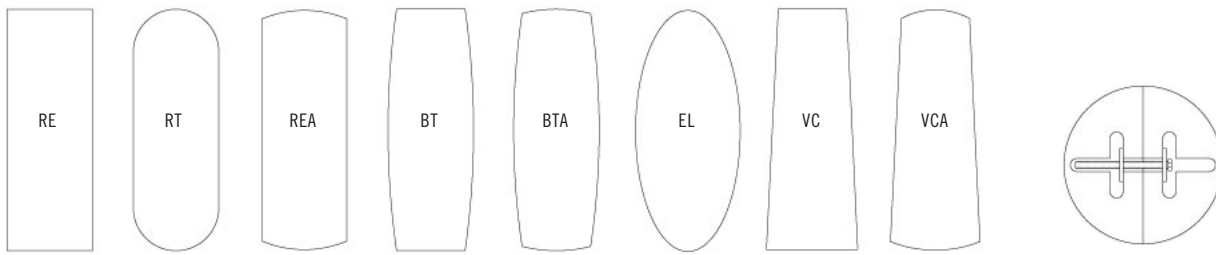


TABLE TOPS

On one-piece tabletops, grain direction runs lengthwise. On tabletops of two or more pieces, grain direction runs from side-to-side, as standard.



On tables of 2 or more pieces, tops are tight joint fastened



TAILGATE TABLES

TABLETOP



SIZE	TABLETOPS		TOP AND EDGE SPECIFICATIONS						TROUGHS		BASES		SEATS	LBS	
	Model	Number of Sections	SE PVF 2MM	HF HB	HBV HBVR HBG	HF2 HB2 HKN4 HKNR4 HBG2	For Veneer Top HF HB HBV HBVR HBG	HF2 HB2 HKN4 HKNR4 HBG2	Number of Troughs	Length of Trough(s)	Number of Bases Required	TGRE TGMNT2	TGSQ	Number of Seats	
<i>Bullet</i>															
48 x 66	TG4866B	1	1940	2564	2753	3079	3159	3644	1	40	2	2	4	92	
48 x 72	TG4872B	1	2040	2717	2923	3276	3366	3895	1	40	2	2	4	101	
48 x 84	TG4884B	1	2445	3235	3477	3887	3991	4609	1	52	2	2	6	118	
48 x 96	TG4896B	1	2636	3540	3815	4286	4403	5110	1	52	2	2	8	134	
60 x 66	TG6066B	1	2098	2809	3027	3397	3489	4047	1	40	2	2	4	116	
60 x 72	TG6072B	1	2206	2983	3219	3625	3725	4334	1	40	2	2	4	126	
60 x 84	TG6084B	1	2639	3545	3822	4294	4413	5121	1	52	2	2	6	147	
60 x 96	TG6096B	1	2859	3894	4210	4750	4885	5695	1	52	2	2	8	168	

Price of top includes troughs and power duplexes. Number of duplexes varies depending on trough size and number of troughs per table. Trough door opens and closes from either side. An open perimeter around each side of the trough door allows the door to be closed while laptops and other items are plugged in.

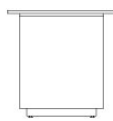


BASES

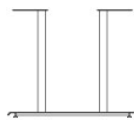
MODEL	BASE SHAPE	LIST PRICE	LBS
TGRE-L	Rectangle Plinth, 11" x 22" - Laminate	861	60
TGRE-V	Rectangle Plinth, 11" x 22" - Veneer	1017	60
TGSQ-L	Square Plinth, 22" x 22" - Laminate	861	70
TGSQ-V	Square Plinth, 22" x 22" - Veneer	1017	70
TGMNT2	Manhattan Round Double Column	320	22
TGMRT2	Manhattan Rectangular Double Column	350	22
TGMNT2-VWM	Manhattan Round Double Column with 1 Oval Vertical Wire Manager	471	27
TGMNT2-RVWM	Manhattan Round Double Column with 1 Rectangular Vertical Wire Manager	471	27
TGMNT2-VWM2	Manhattan Round Double Column with 2 Oval Vertical Wire Managers	622	32
TGMNT2-RVWM2	Manhattan Round Double Column with 2 Rectangular Vertical Wire Managers	622	32



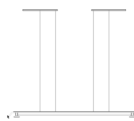
TGRE



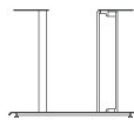
TGSQ



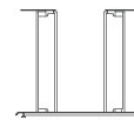
TGMNT2



TGMRT2



TGMNT2 WITH 1 VERTICAL WIRE MANAGER



TGMNT2 WITH 2 VERTICAL WIRE MANAGERS

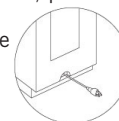
STANDARD FEATURES

- Select from 15 standard laminates or choose any standard Wilsonart, Nevamar, Formica, Arborite and Pionite matte finish laminates at no upcharge. For other laminate please contact the factory for pricing.
- 9 standard veneer and hardwood edge stains. Stain-to-match available at no upcharge.
- Standard with leveling glides.
- Plinth bases are standard with touch latch removable door.

- Plinth bases are standard with kickplate, finished in HOMAPAL 441 Brushed Natural Aluminum.
- Metal bases available in any Spectone color.
- Standard 29" table height.

OPTIONS

- For additional Power & Data modules, please see Table Accessories Price List.
- Cutout for wire pass-through at the bottom of Tailgate bases must be specified if required.



HOW TO ORDER

- Select Top Size
- Select Top Finish
- Select Edge Style & Finish
- Select Base
- Select Base Finish

Example: 4896B - MNT2 -





TAILGATE TABLES

TABLETOP



SIZE	TABLETOPS		TOP AND EDGE SPECIFICATIONS						TROUGHS		BASES		SEATS	LBS
	Model	Number of Sections	For Laminate Top			For Veneer Top			Number of Troughs	Length of Trough(s)	Number of Bases Required		Number of Seats	
SE PVF 2MM	HF HB PKNR ¹ PF ¹	HBV HBVR HBG	HF2 HB2 HKN4 HKNR4 HBG2	HF HB HBV HBVR HBG	HF2 HB2 HKN4 HKNR4 HBG2	TGRE TGMNT2	TGSQ							
<i>Rectangle</i>														
48 x 96	TG4896RE	1	2243	3045	3263	3481	3810	4437	1	52	2	2	8	135
48 x 120	TG48120RE	2	2602	3640	3885	4414	4493	5226	1	76	3	2	10	168
48 x 144	TG48144RE	2	3453	4939	5265	5767	5647	6534	2	40	3	3	10	202
48 x 168	TG48168RE	2	4326	5823	6192	6897	6734	7762	2	52	3	3	12	236
48 x 192	TG48192RE	2	4612	6560	7010	8012	7669	8899	2	52	3	3	14	269
48 x 216	TG48216RE	2	5277	7207	7703	8768	8444	9830	2	76	3	3	14	303
60 x 120	TG60120RE	2	3029	4582	4919	5441	5318	6241	1	76	3	2	10	210
60 x 144	TG60144RE	2	3928	5789	6193	6822	6673	7776	2	40	3	3	12	252
60 x 168	TG60168RE	2	4755	6923	7393	8126	7953	9240	2	52	3	3	12	294
60 x 192	TG60192RE	2	5308	7909	8475	9357	9148	10692	2	52	3	3	14	336
60 x 216	TG60216RE	2	5845	8774	9411	10399	10164	11905	2	76	3	3	16	378

Price of top includes troughs and power duplexes. Number of duplexes varies depending on trough size and number of troughs per table. Trough door opens and closes from either side. An open perimeter around each side of the trough door allows the door to be closed while laptops and other items are plugged in.

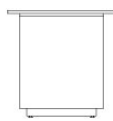
¹ Exposed Baltic Birch plywood edge (PKNR, PF) can only be specified on square tops up to 47-1/2" x 95-1/2". Clear finish only.

BASES

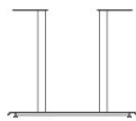
MODEL	BASE SHAPE	LIST PRICE	LBS
TGRE-L	Rectangle Plinth, 11" x 22" - Laminate	861	60
TGRE-V	Rectangle Plinth, 11" x 22" - Veneer	1017	60
TGSQ-L	Square Plinth, 22" x 22" - Laminate	861	70
TGSQ-V	Square Plinth, 22" x 22" - Veneer	1017	70
TGMNT2	Manhattan Round Double Column	320	22
TGMRT2	Manhattan Rectangular Double Column	350	22
TGMNT2-VWM	Manhattan Round Double Column with 1 Oval Vertical Wire Manager	471	27
TGMNT2-RVWM	Manhattan Round Double Column with 1 Rectangular Vertical Wire Manager	471	27
TGMNT2-VWM2	Manhattan Round Double Column with 2 Oval Vertical Wire Managers	622	32
TGMNT2-RVWM2	Manhattan Round Double Column with 2 Rectangular Vertical Wire Managers	622	32



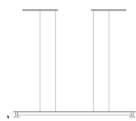
TGRE



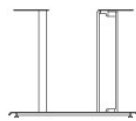
TGSQ



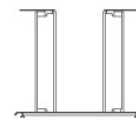
TGMNT2



TGMRT2



TGMNT2 WITH 1 VERTICAL WIRE MANAGER



TGMNT2 WITH 2 VERTICAL WIRE MANAGERS

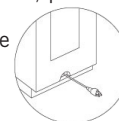
STANDARD FEATURES

- Select from 15 standard laminates or choose any standard Wilsonart, Nevamar, Formica, Arborite and Pionite matte finish laminates at no upcharge. For other laminate please contact the factory for pricing.
- 9 standard veneer and hardwood edge stains. Stain-to-match available at no upcharge.
- Standard with leveling glides.
- Plinth bases are standard with touch latch removable door.

- Plinth bases are standard with kickplate, finished in HOMAPAL 441 Brushed Natural Aluminum.
- Metal bases available in any Spectone color.
- Standard 29" table height.

OPTIONS

- For additional Power & Data modules, please see Table Accessories Price List.
- Cutout for wire pass-through at the bottom of Tailgate bases must be specified if required.



HOW TO ORDER

1. Select Top Size
2. Select Top Finish
3. Select Edge Style & Finish
4. Select Base
5. Select Base Finish

Example: 4896RE - MNT2 -





TAILGATE TABLES

TABLETOP



SIZE	TABLETOPS		TOP AND EDGE SPECIFICATIONS						TROUGHS		BASES		SEATS	LBS
	Model	Number of Sections	SE PVF 2MM	HF HB	HBV HBVR HBG	HF2 HB2 HKN4 HKNR4 HBG2	For Veneer Top HF HB HBV HBVR HBG	HF2 HB2 HKN4 HKNR4 HBG2	Number of Troughs	Length of Trough(s)	Number of Bases Required	TGRE TGMNT2	TGSQ	Number of Seats
<i>Rectangle Arc Ends</i>														
48 x 96	TG4896REA	1	2260	3171	3390	3923	4297	4968	1	52	2	2	8	135
48 x 120	TG48120REA	2	2626	4065	4354	5088	5058	5841	1	76	3	2	10	168
48 x 144	TG48144REA	2	3481	5274	5630	6538	6328	7277	2	40	3	3	10	202
48 x 168	TG48168REA	2	4356	6306	6720	7729	7532	8634	2	52	3	3	12	236
48 x 192	TG48192REA	2	4521	7071	7558	8531	8793	9564	2	52	3	3	14	269
48 x 216	TG48216REA	2	5277	7808	8362	9567	9864	10615	2	76	3	3	14	303
60 x 120	TG60120REA	2	3021	4819	5179	6099	6059	7039	1	76	3	2	10	210
60 x 144	TG60144REA	2	3963	6204	6648	7788	7522	8707	2	40	3	3	12	252
60 x 168	TG60168REA	2	4950	7389	7906	9165	8921	10295	2	52	3	3	12	294
60 x 192	TG60192REA	2	5543	8472	9090	10602	10948	11960	2	52	3	3	14	336
60 x 216	TG60216REA	2	6111	9403	10101	11801	12191	13329	2	76	3	3	16	378

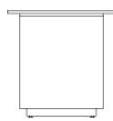
Price of top includes troughs and power duplexes. Number of duplexes varies depending on trough size and number of troughs per table. Trough door opens and closes from either side. An open perimeter around each side of the trough door allows the door to be closed while laptops and other items are plugged in.

BASES

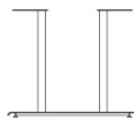
MODEL	BASE SHAPE	LIST PRICE	LBS
TGRE-L	Rectangle Plinth, 11" x 22" - Laminate	861	60
TGRE-V	Rectangle Plinth, 11" x 22" - Veneer	1017	60
TGSQ-L	Square Plinth, 22" x 22" - Laminate	861	70
TGSQ-V	Square Plinth, 22" x 22" - Veneer	1017	70
TGMNT2	Manhattan Round Double Column	320	22
TGMRT2	Manhattan Rectangular Double Column	350	22
TGMNT2-VWM	Manhattan Round Double Column with 1 Oval Vertical Wire Manager	471	27
TGMNT2-RVWM	Manhattan Round Double Column with 1 Rectangular Vertical Wire Manager	471	27
TGMNT2-VWM2	Manhattan Round Double Column with 2 Oval Vertical Wire Managers	622	32
TGMNT2-RVWM2	Manhattan Round Double Column with 2 Rectangular Vertical Wire Managers	622	32



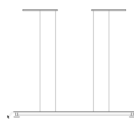
TGRE



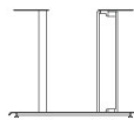
TGSQ



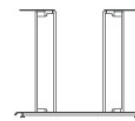
TGMNT2



TGMRT2



TGMNT2 WITH 1 VERTICAL WIRE MANAGER



TGMNT2 WITH 2 VERTICAL WIRE MANAGERS

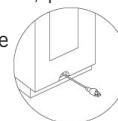
STANDARD FEATURES

- Select from 15 standard laminates or choose any standard Wilsonart, Nevamar, Formica, Arborite and Pionite matte finish laminates at no upcharge. For other laminate please contact the factory for pricing.
- 9 standard veneer and hardwood edge stains. Stain-to-match available at no upcharge.
- Standard with leveling glides.
- Plinth bases are standard with touch latch removable door.

- Plinth bases are standard with kickplate, finished in HOMAPAL 441 Brushed Natural Aluminum.
- Metal bases available in any Spectone color.
- Standard 29" table height.

OPTIONS

- For additional Power & Data modules, please see Table Accessories Price List.
- Cutout for wire pass-through at the bottom of Tailgate bases must be specified if required.



HOW TO ORDER

1. Select Top Size
2. Select Top Finish
3. Select Edge Style & Finish
4. Select Base
5. Select Base Finish

Example: 4896REA - MNT2 -





TAILGATE TABLES

TABLETOP



SIZE	TABLETOPS		TOP AND EDGE SPECIFICATIONS						TROUGHS		BASES		SEATS	LBS
	Model	Number of Sections	SE PVF 2MM	HF HB	HBV HBVR HBG	HF2 HB2 HKN4 HKNR4 HBG2	For Veneer Top HF HB HB2 HKN4 HKNR4 HBG2	Number of Troughs	Length of Trough(s)	Number of Bases Required		Number of Seats		
<i>Racetrack</i>														
48 x 96	TG4896RT	1	2260	3171	3390	3923	4297	4968	1	52	2	2	8	135
48 x 120	TG48120RT	2	2626	4065	4354	5088	5058	5841	1	76	3	2	10	168
48 x 144	TG48144RT	2	3481	5274	5630	6538	6328	7277	2	40	3	3	10	202
48 x 168	TG48168RT	2	4356	6306	6720	7729	7532	8634	2	52	3	3	12	236
48 x 192	TG48192RT	2	4521	7071	7558	8531	8793	9564	2	52	3	3	14	269
48 x 216	TG48216RT	2	5277	7808	8362	9567	9864	10615	2	76	3	3	14	303
60 x 120	TG60120RT	2	3021	4819	5179	6099	6059	7039	1	76	3	2	10	210
60 x 144	TG60144RT	2	3963	6204	6648	7788	7522	8707	2	40	3	3	12	252
60 x 168	TG60168RT	2	4950	7389	7906	9165	8921	10295	2	52	3	3	12	294
60 x 192	TG60192RT	2	5543	8472	9090	10602	10948	11960	2	52	3	3	14	336
60 x 216	TG60216RT	2	6111	9403	10101	11801	12191	13329	2	76	3	3	16	378

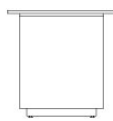
Price of top includes troughs and power duplexes. Number of duplexes varies depending on trough size and number of troughs per table. Trough door opens and closes from either side. An open perimeter around each side of the trough door allows the door to be closed while laptops and other items are plugged in.

BASES

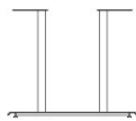
MODEL	BASE SHAPE	LIST PRICE	LBS
TGRE-L	Rectangle Plinth, 11" x 22" - Laminate	861	60
TGRE-V	Rectangle Plinth, 11" x 22" - Veneer	1017	60
TGSQ-L	Square Plinth, 22" x 22" - Laminate	861	70
TGSQ-V	Square Plinth, 22" x 22" - Veneer	1017	70
TGMNT2	Manhattan Round Double Column	320	22
TGMRT2	Manhattan Rectangular Double Column	350	22
TGMNT2-VWM	Manhattan Round Double Column with 1 Oval Vertical Wire Manager	471	27
TGMNT2-RVWM	Manhattan Round Double Column with 1 Rectangular Vertical Wire Manager	471	27
TGMNT2-VWM2	Manhattan Round Double Column with 2 Oval Vertical Wire Managers	622	32
TGMNT2-RVWM2	Manhattan Round Double Column with 2 Rectangular Vertical Wire Managers	622	32



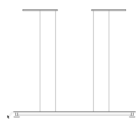
TGRE



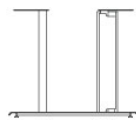
TGSQ



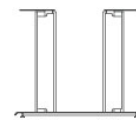
TGMNT2



TGMRT2



TGMNT2 WITH 1 VERTICAL WIRE MANAGER



TGMNT2 WITH 2 VERTICAL WIRE MANAGERS

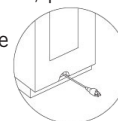
STANDARD FEATURES

- Select from 15 standard laminates or choose any standard Wilsonart, Nevamar, Formica, Arborite and Pionite matte finish laminates at no upcharge. For other laminate please contact the factory for pricing.
- 9 standard veneer and hardwood edge stains. Stain-to-match available at no upcharge.
- Standard with leveling glides.
- Plinth bases are standard with touch latch removable door.

- Plinth bases are standard with kickplate, finished in HOMAPAL 441 Brushed Natural Aluminum.
- Metal bases available in any Spectone color.
- Standard 29" table height.

OPTIONS

- For additional Power & Data modules, please see Table Accessories Price List.
- Cutout for wire pass-through at the bottom of Tailgate bases must be specified if required.



HOW TO ORDER

1. Select Top Size
2. Select Top Finish
3. Select Edge Style & Finish
4. Select Base
5. Select Base Finish

Example: 4896RT - MNT2 -





TAILGATE TABLES

TABLETOP

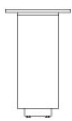


SIZE	TABLETOPS		TOP AND EDGE SPECIFICATIONS						TROUGHS		BASES		SEATS	LBS
	Model	Number of Sections	For Laminate Top			For Veneer Top			Number of Troughs	Length of Trough(s)	Number of Bases Required		Number of Seats	
SE PVPF 2MM	HF HB	HBV HBVR HBG	HF2 HB2 HKN4 HBKNR4 HBG2	HF HB HBV HBVR HBG	HF2 HB2 HKN4 HBKNR4 HBG2	TGRE TGMNT2	TGSQ							
<i>Boatshape</i>														
48 x 96	TG4896BT	1	2260	3785	4071	4366	4780	5146	1	52	2	2	8	135
48 x 120	TG48120BT	2	2626	4744	5099	5470	5628	6049	1	76	3	2	10	168
48 x 144	TG48144BT	2	3481	5952	6374	6822	7385	7766	2	40	3	3	10	202
48 x 168	TG48168BT	2	4356	7058	7547	8063	8325	8920	2	52	3	3	12	236
48 x 192	TG48192BT	2	4521	7834	8399	9515	9816	10701	2	52	3	3	14	269
48 x 216	TG48216BT	2	5277	8662	9300	10685	11028	11891	2	76	3	3	14	303
60 x 120	TG60120BT	2	3021	5666	6111	6573	6775	7298	1	76	3	2	10	210
60 x 144	TG60144BT	2	3963	7054	7580	8137	8840	9321	2	40	3	3	12	252
60 x 168	TG60168BT	2	4950	8327	8938	9583	9911	10655	2	52	3	3	12	294
60 x 192	TG60192BT	2	5543	9596	10330	11103	11494	12386	2	52	3	3	14	336
60 x 216	TG60216BT	2	6111	10672	11495	12367	12807	13809	2	76	3	3	16	378

Price of top includes troughs and power duplexes. Number of duplexes varies depending on trough size and number of troughs per table. Trough door opens and closes from either side. An open perimeter around each side of the trough door allows the door to be closed while laptops and other items are plugged in.

BASES

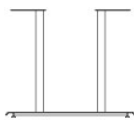
MODEL	BASE SHAPE	LIST PRICE	LBS
TGRE-L	Rectangle Plinth, 11" x 22" - Laminate	861	60
TGRE-V	Rectangle Plinth, 11" x 22" - Veneer	1017	60
TGSQ-L	Square Plinth, 22" x 22" - Laminate	861	70
TGSQ-V	Square Plinth, 22" x 22" - Veneer	1017	70
TGMNT2	Manhattan Round Double Column	320	22
TGMRT2	Manhattan Rectangular Double Column	350	22
TGMNT2-VWM	Manhattan Round Double Column with 1 Oval Vertical Wire Manager	471	27
TGMNT2-RVWM	Manhattan Round Double Column with 1 Rectangular Vertical Wire Manager	471	27
TGMNT2-VWM2	Manhattan Round Double Column with 2 Oval Vertical Wire Managers	622	32
TGMNT2-RVWM2	Manhattan Round Double Column with 2 Rectangular Vertical Wire Managers	622	32



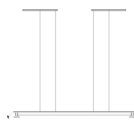
TGRE



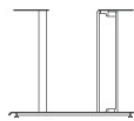
TGSQ



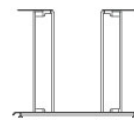
TGMNT2



TGMRT2



TGMNT2 WITH 1 VERTICAL WIRE MANAGER



TGMNT2 WITH 2 VERTICAL WIRE MANAGERS

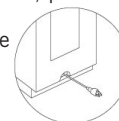
STANDARD FEATURES

- Select from 15 standard laminates or choose any standard Wilsonart, Nevamar, Formica, Arborite and Pionite matte finish laminates at no upcharge. For other laminate please contact the factory for pricing.
- 9 standard veneer and hardwood edge stains. Stain-to-match available at no upcharge.
- Standard with leveling glides.
- Plinth bases are standard with touch latch removable door.

- Plinth bases are standard with kickplate, finished in HOMAPAL 441 Brushed Natural Aluminum.
- Metal bases available in any Spectone color.
- Standard 29" table height.

OPTIONS

- For additional Power & Data modules, please see Table Accessories Price List.
- Cutout for wire pass-through at the bottom of Tailgate bases must be specified if required.



HOW TO ORDER

1. Select Top Size
2. Select Top Finish
3. Select Edge Style & Finish
4. Select Base
5. Select Base Finish

Example: 4896BT - MNT2 -





TAILGATE TABLES

TABLETOP



SIZE	TABLETOPS		TOP AND EDGE SPECIFICATIONS						TROUGHS		BASES		SEATS	LBS
	Model	Number of Sections	For Laminate Top			For Veneer Top			Number of Troughs	Length of Trough(s)	Number of Bases Required		Number of Seats	
SE PVF 2MM	HF HB	HBV HBVR HBG	HF2 HB2 HKN4 HKNR4 HBG2	HF HB HBV HBVR HBG	HF2 HB2 HKN4 HKNR4 HBG2	TGRE TGMNT2	TGSQ							
<i>Boatshape Arc Ends</i>														
48 x 96	TG4896BTA	1	2417	4278	4561	4856	5267	5636	1	52	2	2	8	135
48 x 120	TG48120BTA	2	2780	5235	5587	5958	6116	6538	1	76	3	2	10	168
48 x 144	TG48144BTA	2	3636	6442	6863	7308	7872	8256	2	40	3	3	10	202
48 x 168	TG48168BTA	2	4513	7547	8035	8552	8814	9410	2	52	3	3	12	236
48 x 192	TG48192BTA	2	4773	8418	9038	10267	10599	11574	2	52	3	3	14	269
48 x 216	TG48216BTA	2	5594	9321	10020	11544	11922	12869	2	76	3	3	14	303
60 x 120	TG60120BTA	2	3214	6279	6720	7186	7381	7908	1	76	3	2	10	210
60 x 144	TG60144BTA	2	4156	7664	8191	8750	9451	9930	2	40	3	3	12	252
60 x 168	TG60168BTA	2	5146	8938	9549	10193	10520	11264	2	52	3	3	12	294
60 x 192	TG60192BTA	2	5776	10330	11063	11832	12228	13120	2	52	3	3	14	336
60 x 216	TG60216BTA	2	6374	11495	12320	13189	13630	14635	2	76	3	3	16	378

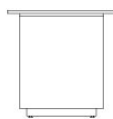
Price of top includes troughs and power duplexes. Number of duplexes varies depending on trough size and number of troughs per table. Trough door opens and closes from either side. An open perimeter around each side of the trough door allows the door to be closed while laptops and other items are plugged in.

BASES

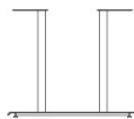
MODEL	BASE SHAPE	LIST PRICE	LBS
TGRE-L	Rectangle Plinth, 11" x 22" - Laminate	861	60
TGRE-V	Rectangle Plinth, 11" x 22" - Veneer	1017	60
TGSQ-L	Square Plinth, 22" x 22" - Laminate	861	70
TGSQ-V	Square Plinth, 22" x 22" - Veneer	1017	70
TGMNT2	Manhattan Round Double Column	320	22
TGMRT2	Manhattan Rectangular Double Column	350	22
TGMNT2-VWM	Manhattan Round Double Column with 1 Oval Vertical Wire Manager	471	27
TGMNT2-RVWM	Manhattan Round Double Column with 1 Rectangular Vertical Wire Manager	471	27
TGMNT2-VWM2	Manhattan Round Double Column with 2 Oval Vertical Wire Managers	622	32
TGMNT2-RVWM2	Manhattan Round Double Column with 2 Rectangular Vertical Wire Managers	622	32



TGRE



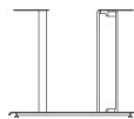
TGSQ



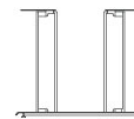
TGMNT2



TGMRT2



TGMNT2 WITH 1 VERTICAL WIRE MANAGER



TGMNT2 WITH 2 VERTICAL WIRE MANAGERS

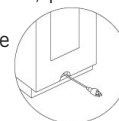
STANDARD FEATURES

- Select from 15 standard laminates or choose any standard Wilsonart, Nevamar, Formica, Arborite and Pionite matte finish laminates at no upcharge. For other laminate please contact the factory for pricing.
- 9 standard veneer and hardwood edge stains. Stain-to-match available at no upcharge.
- Standard with leveling glides.
- Plinth bases are standard with touch latch removable door.

- Plinth bases are standard with kickplate, finished in HOMAPAL 441 Brushed Natural Aluminum.
- Metal bases available in any Spectone color.
- Standard 29" table height.

OPTIONS

- For additional Power & Data modules, please see Table Accessories Price List.
- Cutout for wire pass-through at the bottom of Tailgate bases must be specified if required.



HOW TO ORDER

- Select Top Size
- Select Top Finish
- Select Edge Style & Finish
- Select Base
- Select Base Finish

Example: 4896BTA - MNT2 -





TAILGATE TABLES

TABLETOP



SIZE	TABLETOPS		TOP AND EDGE SPECIFICATIONS						TROUGHS		BASES		SEATS	LBS
	Model	Number of Sections	SE PVF 2MM	HF HB	HBV HBVR HBG	HF2 HB2 HKN4 HKNR4 HBG2	For Veneer Top HF HB HBV HBVR HBG	HF2 HB2 HKN4 HKNR4 HBG2	Number of Troughs	Length of Trough(s)	Number of Bases Required	TGRE TGMNT2	TGSQ	Number of Seats
<i>Ellipse</i>														
48 x 96	TG4896EL	1	2516	4346	4689	5042	5537	5976	1	52	2	2	8	135
48 x 120	TG48120EL	2	2941	5482	5908	6352	6545	7047	1	76	3	2	10	168
48 x 144	TG48144EL	2	3865	6833	7338	7875	8549	9011	2	40	3	3	10	202
48 x 168	TG48168EL	2	4832	8072	8660	9277	9570	10308	2	52	3	3	12	236
48 x 192	TG48192EL	2	5054	9063	9745	11093	11461	12532	2	52	3	3	14	269
48 x 216	TG48216EL	2	5944	10042	10810	12489	12904	13945	2	76	3	3	14	303
60 x 120	TG60120EL	2	3540	7065	7570	8105	8332	8935	1	76	3	2	10	210
60 x 144	TG60144EL	2	4547	8580	9187	9829	10635	11185	2	40	3	3	12	252
60 x 168	TG60168EL	2	5620	9981	10683	11423	11801	12657	2	52	3	3	12	294
60 x 192	TG60192EL	2	6347	11580	12425	13312	13764	14793	2	52	3	3	14	336
60 x 216	TG60216EL	2	7015	12903	13852	14850	15359	16516	2	76	3	3	16	378

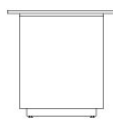
Price of top includes troughs and power duplexes. Number of duplexes varies depending on trough size and number of troughs per table. Trough door opens and closes from either side. An open perimeter around each side of the trough door allows the door to be closed while laptops and other items are plugged in.

BASES

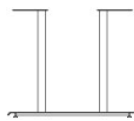
MODEL	BASE SHAPE	LIST PRICE	LBS
TGRE-L	Rectangle Plinth, 11" x 22" - Laminate	861	60
TGRE-V	Rectangle Plinth, 11" x 22" - Veneer	1017	60
TGSQ-L	Square Plinth, 22" x 22" - Laminate	861	70
TGSQ-V	Square Plinth, 22" x 22" - Veneer	1017	70
TGMNT2	Manhattan Round Double Column	320	22
TGMRT2	Manhattan Rectangular Double Column	350	22
TGMNT2-VWM	Manhattan Round Double Column with 1 Oval Vertical Wire Manager	471	27
TGMNT2-RVWM	Manhattan Round Double Column with 1 Rectangular Vertical Wire Manager	471	27
TGMNT2-VWM2	Manhattan Round Double Column with 2 Oval Vertical Wire Managers	622	32
TGMNT2-RVWM2	Manhattan Round Double Column with 2 Rectangular Vertical Wire Managers	622	32



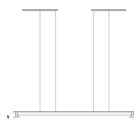
TGRE



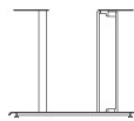
TGSQ



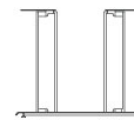
TGMNT2



TGMRT2



TGMNT2 WITH 1 VERTICAL WIRE MANAGER



TGMNT2 WITH 2 VERTICAL WIRE MANAGERS

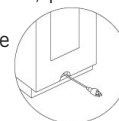
STANDARD FEATURES

- Select from 15 standard laminates or choose any standard Wilsonart, Nevamar, Formica, Arborite and Pionite matte finish laminates at no upcharge. For other laminate please contact the factory for pricing.
- 9 standard veneer and hardwood edge stains. Stain-to-match available at no upcharge.
- Standard with leveling glides.
- Plinth bases are standard with touch latch removable door.

- Plinth bases are standard with kickplate, finished in HOMAPAL 441 Brushed Natural Aluminum.
- Metal bases available in any Spectone color.
- Standard 29" table height.

OPTIONS

- For additional Power & Data modules, please see Table Accessories Price List.
- Cutout for wire pass-through at the bottom of Tailgate bases must be specified if required.



HOW TO ORDER

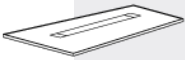
1. Select Top Size
2. Select Top Finish
3. Select Edge Style & Finish
4. Select Base
5. Select Base Finish

Example: 4896EL - MNT2 -



TAILGATE TABLES

TABLETOP



SIZE	TABLETOPS		TOP AND EDGE SPECIFICATIONS						TROUGHS		BASES		SEATS	LBS
	Model	Number of Sections	SE PVF 2MM	HF HB	HBV HBVR HBG	HF2 HB2 HKN4 HKNR4 HBG2	For Veneer Top HF HB HBV HBVR HBG	HF2 HB2 HKN4 HKNR4 HBG2	Number of Troughs	Length of Trough(s)	Number of Bases Required	TGRE TGMNT2	TGSQ	Number of Seats
<i>Video Conference</i>														
48 x 96	TG4896VC	1	2260	3785	4071	4366	4780	5146	1	52	2	2	8	135
48 x 120	TG48120VC	2	2626	4744	5099	5470	5628	6049	1	76	3	2	10	168
48 x 144	TG48144VC	2	3481	5952	6374	6822	7385	7766	2	40	3	3	10	202
48 x 168	TG48168VC	2	4356	7058	7547	8063	8305	8920	2	52	3	3	12	236
48 x 192	TG48192VC	2	4521	7834	8399	9515	9816	10701	2	52	3	3	14	269
48 x 216	TG48216VC	2	5277	8662	9300	10685	11028	11891	2	76	3	3	14	303
60 x 120	TG60120VC	2	3021	5666	6111	6573	6775	7298	1	76	3	2	10	210
60 x 144	TG60144VC	2	3963	7054	7580	8137	8840	9321	2	40	3	3	12	252
60 x 168	TG60168VC	2	4950	8327	8938	9583	9911	10655	2	52	3	3	12	294
60 x 192	TG60192VC	2	5543	9596	10330	11103	11494	12386	2	52	3	3	14	336
60 x 216	TG60216VC	2	6111	10672	11495	12367	12807	13809	2	76	3	3	16	378

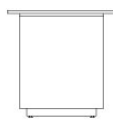
Price of top includes troughs and power duplexes. Number of duplexes varies depending on trough size and number of troughs per table. Trough door opens and closes from either side. An open perimeter around each side of the trough door allows the door to be closed while laptops and other items are plugged in.

BASES

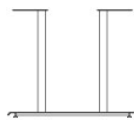
MODEL	BASE SHAPE	LIST PRICE	LBS
TGRE-L	Rectangle Plinth, 11" x 22" - Laminate	861	60
TGRE-V	Rectangle Plinth, 11" x 22" - Veneer	1017	60
TGSQ-L	Square Plinth, 22" x 22" - Laminate	861	70
TGSQ-V	Square Plinth, 22" x 22" - Veneer	1017	70
TGMNT2	Manhattan Round Double Column	320	22
TGMRT2	Manhattan Rectangular Double Column	350	22
TGMNT2-VWM	Manhattan Round Double Column with 1 Oval Vertical Wire Manager	471	27
TGMNT2-RVWM	Manhattan Round Double Column with 1 Rectangular Vertical Wire Manager	471	27
TGMNT2-VWM2	Manhattan Round Double Column with 2 Oval Vertical Wire Managers	622	32
TGMNT2-RVWM2	Manhattan Round Double Column with 2 Rectangular Vertical Wire Managers	622	32



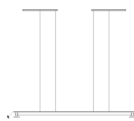
TGRE



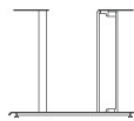
TGSQ



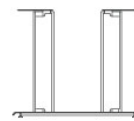
TGMNT2



TGMRT2



TGMNT2 WITH 1 VERTICAL WIRE MANAGER



TGMNT2 WITH 2 VERTICAL WIRE MANAGERS

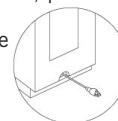
STANDARD FEATURES

- Select from 15 standard laminates or choose any standard Wilsonart, Nevamar, Formica, Arborite and Pionite matte finish laminates at no upcharge. For other laminate please contact the factory for pricing.
- 9 standard veneer and hardwood edge stains. Stain-to-match available at no upcharge.
- Standard with leveling glides.
- Plinth bases are standard with touch latch removable door.

- Plinth bases are standard with kickplate, finished in HOMAPAL 441 Brushed Natural Aluminum.
- Metal bases available in any Spectone color.
- Standard 29" table height.

OPTIONS

- For additional Power & Data modules, please see Table Accessories Price List.
- Cutout for wire pass-through at the bottom of Tailgate bases must be specified if required.



HOW TO ORDER

1. Select Top Size
2. Select Top Finish
3. Select Edge Style & Finish
4. Select Base
5. Select Base Finish

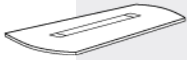
Example: 4896VC - MNT2 -





TAILGATE TABLES

TABLETOP



SIZE	TABLETOPS		TOP AND EDGE SPECIFICATIONS						TROUGHS		BASES		SEATS	LBS
	Model	Number of Sections	SE PVF 2MM	HF HB	HBV HBVR HBG	HF2 HB2 HKN4 HKNR4 HBG2	For Veneer Top HF HB HBV HBVR HBG	HF2 HB2 HKN4 HKNR4 HBG2	Number of Troughs	Length of Trough(s)	Number of Bases Required	TGRE TGMNT2		
<i>Video Conference Arc Ends</i>														
48 x 96	TG4896VCA	1	2417	4278	4561	4856	5267	5636	1	52	2	2	8	135
48 x 120	TG48120VCA	2	2780	5235	5587	5958	6116	6538	1	76	3	2	10	168
48 x 144	TG48144VCA	2	3636	6442	6863	7308	7872	8256	2	40	3	3	10	202
48 x 168	TG48168VCA	2	4513	7547	8035	8552	8814	9410	2	52	3	3	12	236
48 x 192	TG48192VCA	2	4773	8418	9038	10267	10599	11574	2	52	3	3	14	269
48 x 216	TG48216VCA	2	5594	9321	10020	11544	11922	12869	2	76	3	3	14	303
60 x 120	TG60120VCA	2	3214	6279	6720	7186	7381	7908	1	76	3	2	10	210
60 x 144	TG60144VCA	2	4156	7664	8191	8750	9451	9930	2	40	3	3	12	252
60 x 168	TG60168VCA	2	5146	8938	9549	10193	10520	11264	2	52	3	3	12	294
60 x 192	TG60192VCA	2	5776	10330	11063	11832	12228	13120	2	52	3	3	14	336
60 x 216	TG60216VCA	2	6374	11495	12320	13189	13630	14635	2	76	3	3	16	378

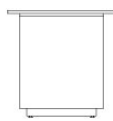
Price of top includes troughs and power duplexes. Number of duplexes varies depending on trough size and number of troughs per table. Trough door opens and closes from either side. An open perimeter around each side of the trough door allows the door to be closed while laptops and other items are plugged in.

BASES

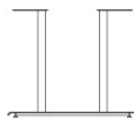
MODEL	BASE SHAPE	LIST PRICE	LBS
TGRE-L	Rectangle Plinth, 11" x 22" - Laminate	861	60
TGRE-V	Rectangle Plinth, 11" x 22" - Veneer	1017	60
TGSQ-L	Square Plinth, 22" x 22" - Laminate	861	70
TGSQ-V	Square Plinth, 22" x 22" - Veneer	1017	70
TGMNT2	Manhattan Round Double Column	320	22
TGMRT2	Manhattan Rectangular Double Column	350	22
TGMNT2-VWM	Manhattan Round Double Column with 1 Oval Vertical Wire Manager	471	27
TGMNT2-RVWM	Manhattan Round Double Column with 1 Rectangular Vertical Wire Manager	471	27
TGMNT2-VWM2	Manhattan Round Double Column with 2 Oval Vertical Wire Managers	622	32
TGMNT2-RVWM2	Manhattan Round Double Column with 2 Rectangular Vertical Wire Managers	622	32



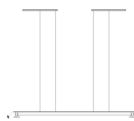
TGRE



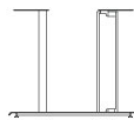
TGSQ



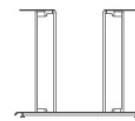
TGMNT2



TGMRT2



TGMNT2 WITH 1 VERTICAL WIRE MANAGER



TGMNT2 WITH 2 VERTICAL WIRE MANAGERS

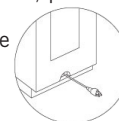
STANDARD FEATURES

- Select from 15 standard laminates or choose any standard Wilsonart, Nevamar, Formica, Arborite and Pionite matte finish laminates at no upcharge. For other laminate please contact the factory for pricing.
- 9 standard veneer and hardwood edge stains. Stain-to-match available at no upcharge.
- Standard with leveling glides.
- Plinth bases are standard with touch latch removable door.

- Plinth bases are standard with kickplate, finished in HOMAPAL 441 Brushed Natural Aluminum.
- Metal bases available in any Spectone color.
- Standard 29" table height.

OPTIONS

- For additional Power & Data modules, please see Table Accessories Price List.
- Cutout for wire pass-through at the bottom of Tailgate bases must be specified if required.



HOW TO ORDER

1. Select Top Size
2. Select Top Finish
3. Select Edge Style & Finish
4. Select Base
5. Select Base Finish

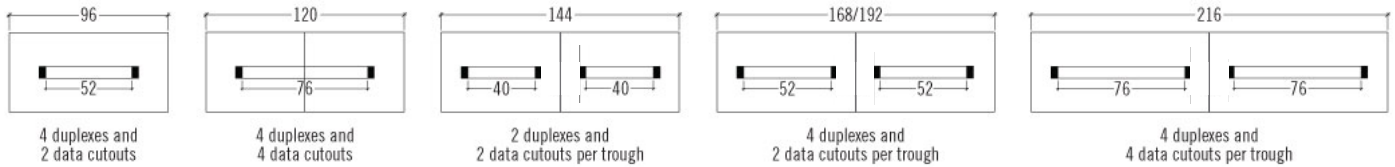
Example: 4896VCA - MNT2 -



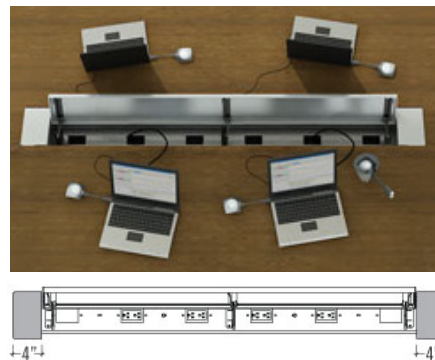
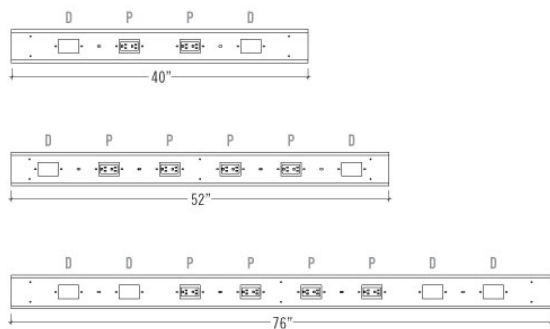
TAILGATE TABLES

POWER AND VOICE/DATA ACCESSORIES

Power and Communication Trough is included in price.



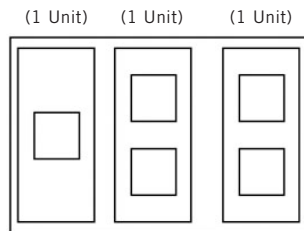
Each trough is standard with power duplexes (labelled P) with a 9 ft. cord. Cutouts for data and communication (labelled D) are also included, however, data ports must be specified separately and can be configured to meet specific requirements. Specify blank plates when data and communication is not required at no upcharge.



Trough end caps are always 4" long and 6.5" wide.



Units in data plates must equal 3. Plates can be made up of items that equal 1 unit each for a total of 3 units or a combination of items that total 3 units.



OPTION 11 - \$118 List
15 Pin VGA
(1 Unit)
Front: 15 Pin Female
Back: 15 Pin Female



OPTION 14 - No Charge
Blank
(1 Unit)



OPTION 22 - \$205 List
USB 2.0 Performance
(1 Unit)
Front: Type A & A (F/F)
Back: Type A & A (F/F)



OPTION 23 - \$170 List
HDMI-A/V Connector
(1 Unit)
Front: Female
Back: Female



OPTION 28 - \$ 67 List
RJ 45 (cat. 6) X 2
(1 Unit)



OPTION 29 - \$ 36 List
RJ 45 (cat. 6) X 1
(1 Unit)

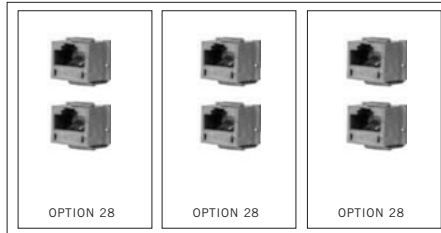
TAILGATE TABLES

VOICE/DATA ACCESSORIES

Examples of 1 Data Plate

PLATE CONFIGURATION OPTIONS FOR DATA & PHONE

6X RJ 45 (CAT. 6)



CONFIGURATION A

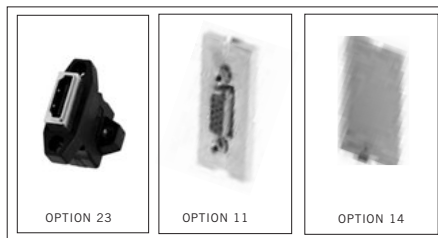
Consists of the following:

3x **OPTION 28** = \$ 67 LIST

TOTAL LIST = \$201 LIST

PLATE CONFIGURATION OPTIONS FOR AUDIO/VIDEO

1X HDMI A/V CONNECTOR, 15 PIN V99 AND BLANK



CONFIGURATION B

Consists of the following:

1x **OPTION 23** = \$ 170 LIST

1x **OPTION 11** = \$ 118 LIST

1x **OPTION 14** = NO CHARGE

TOTAL LIST = \$288 LIST

