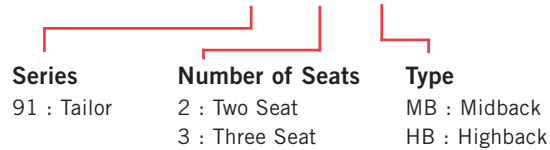


TAILOR Lounge Collection - BOOTH



PRODUCT CODE

91 03 HB



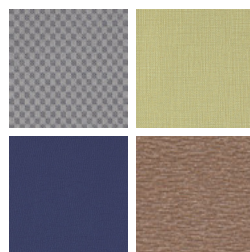
FINISHES

FRAME



Select from one of our 76 standard Spectone colors

FABRIC



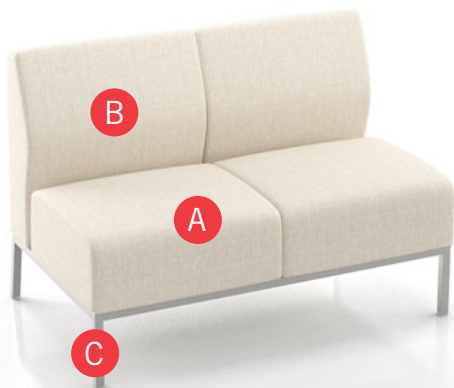
Select fabrics from one of our textile partners

POWER



In seat

HOW TO ORDER



Specify Model

- A** Specify Fabric - Seat¹
Manufacturer, Pattern Name, Color
- B** Specify Fabric - Back¹
Manufacturer, Pattern Name, Color
- C** Specify Frame Finish

Optional: CAL 133, Moisture Barrier, Freestanding Tables, Leveling Glides, Power

¹ When multiple fabrics are specified, please provide a drawing and legend for fabric placement.

Model	Fabric - Seat	Fabric - Back 1	Fabric - Back 2	Frame Finish
9102MB	Momentum, Beeline, Canvas	Momentum, Beeline, Canvas	Momentum, Beeline, Canvas	Silver

TAILOR Lounge Collection - BOOTH

MIDBACK

Standard Features

- Separate seat and back
- Single piece seat upholstery for easier maintenance
- Non wall-saving frame
- Glides
- Ships assembled
- Ships 1 two seat sofa per carton, 43 cu ft
- Ships 1 three seat sofa per carton, 62 cu ft

Contact Spec Customer Service to railroad fabrics (specify repeat info and yardage requirement will be provided) and for repeats greater than 5" x 5"

To ensure proper configuration please provide a layout drawing.

Options

- For an individually sewn seat upholstery that creates a gap between seats, call Customer Service
- Leveling glides with inserts (set of 4) are available, add \$16 List
- Upholstered seat/back can match or contrast
- Cove Mini power module centered in the seat front is available in Black, Silver Pearl and Gloss White. Add \$468 List per seat per module
- Antibacterial and antimicrobial fabrics available
- CAL 133



Cove Mini

Two Seat, Midback Booth

COM 5.5 yds
 2.5 yds COM per two seater one-piece seat
 3.0 yds COM per two seater two-piece back (1.5 yds COM per single back)

MODEL	COM	GR 1	GR 2	GR 3	GR 4	GR 5	GR 6
9102MB	1510	1748	1829	1996	2234	2418	2656

Dimensions (inches)

seat H	18.0	seat W	23.0				
total H	33.0	total W	46.0	depth	27.50		

Exceeds BIFMA Seating Durability Test to 570 lbs
 CAL 133, add \$404 List per unit



9102MB
92 lbs

Three Seat, Midback Booth

COM 8.25 yds
 3.75 yds COM per three seater one-piece seat
 4.5 yds COM per three seater three-piece back (1.5 yds COM per single back)

MODEL	COM	GR 1	GR 2	GR 3	GR 4	GR 5	GR 6
9103MB	2186	2526	2643	2882	3222	3487	3828

Dimensions (inches)

seat H	18.0	seat W	23.0				
total H	33.0	total W	69.0	depth	27.50		

Exceeds BIFMA Seating Durability Test to 750 lbs
 CAL 133, add \$606 List per unit



9103MB
137 lbs

TAILOR Lounge Collection - BOOTH

HIGHBACK

Standard Features

- Separate seat and back
- Single piece seat upholstery for easier maintenance
- Non wall-saving frame
- Glides
- Ships assembled
- Ships 1 two seat sofa per carton, 55 cu ft
- Ships 1 three seat sofa per carton, 79 cu ft

Contact Spec Customer Service to railroad fabrics (specify repeat info and yardage requirement will be provided) and for repeats greater than 5" x 5"

To ensure proper configuration please provide a layout drawing.

Options

- For an individually sewn seat upholstery that creates a gap between seats, call Customer Service
- Leveling glides with inserts (set of 4) are available, add \$16 List
- Upholstered seat/back can match or contrast
- Cove Mini power module centered in the seat front is available in Black, Silver Pearl and Gloss White. Add \$468 List per seat per module
- Antibacterial and antimicrobial fabrics available
- CAL 133



Cove Mini

Two Seat, Highback Booth

COM 7.0 yds
 2.5 yds COM per two seater one-piece seat
 4.5 yds COM per two seater two-piece back (2.25 yds COM per single back)

MODEL	COM	GR 1	GR 2	GR 3	GR 4	GR 5	GR 6
9102HB	1724	2059	2173	2408	2742	3005	3340

Dimensions (inches)

seat H	18.0	seat W	23.0				
total H	44.0	total W	46.0	depth	27.50		

Exceeds BIFMA Seating Durability Test to 570 lbs
 CAL 133, add \$525 List per unit



9102HB
90 lbs

Three Seat, Highback Booth

COM 10.5 yds
 3.75 yds COM per three seater one-piece seat
 6.75 yds COM per three seater three-piece back (2.25 yds COM per single back)

MODEL	COM	GR 1	GR 2	GR 3	GR 4	GR 5	GR 6
9103HB	2507	2994	3160	3500	3986	4366	4853

Dimensions (inches)

seat H	18.0	seat W	23.0				
total H	44.0	total W	69.0	depth	27.50		

Exceeds BIFMA Seating Durability Test to 750 lbs
 CAL 133, add \$801 List per unit



9103HB
149 lbs



TAILOR Lounge Collection - BOOTH

TABLES



MODEL	BASES			TOP SPECIFICATIONS	OPTIONS	LBS
	<i>Code</i>	<i>Size</i>	<i>Qty.</i>			
				<i>For Laminate Top</i> SE 2MM		
<i>Rectangle</i> <i>29" high</i>						
30 X 46 RE	TBT	20 X 36	1	1138		123
36 X 46 RE	TBT	26 X 36	1	1371		153
42 X 46 RE	TBT	32 X 36	1	1735		183
30 X 69 RE	TBT	20 X 27	2	1964		185
36 X 69 RE	TBT	26 X 27	2	2194		230
42 X 69 RE	TBT	32 X 27	2	2639		276



30X46RE TBT

30X69RE TBT

STANDARD FEATURES

- Select from 15 standard laminates or choose any standard Wilsonart, Nevamar, Formica, Arborite and Pionite matte finish laminates at no upcharge. For other laminate please contact the factory for pricing.
- Standard with leveling glides.
- Bases available in any Spectone color.
- Standard 29" table height.
- Ships Knocked Down.

HOW TO ORDER

1. Select Model
2. Select Base
3. Select Edge Style
4. Select Options
5. Select Top Finish
6. Select Edge Finish
7. Select Base Finish

Example: 3046RE - TBT - 2MM

