



Pricing March 1, 2020  
Discount 57.7% from List prices



## TAILOR Lounge Collection - BOOTH



### PRODUCT CODE

**91 03 HB**

#### Series

91 : Tailor

#### Number of Seats

2 : Two Seat  
3 : Three Seat

#### Type

MB : Midback  
HB : Highback



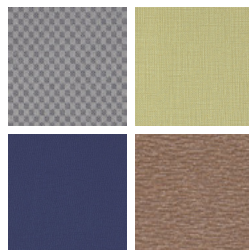
### FINISHES

#### FRAME



Select from one of our 76 standard Spectone colors

#### FABRIC



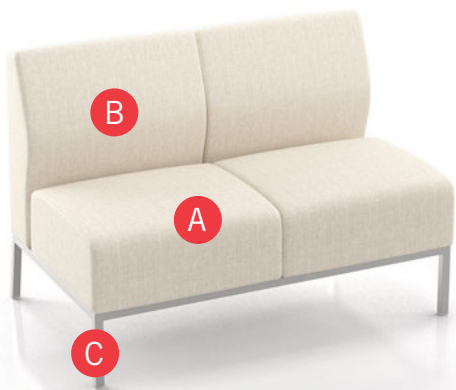
Select fabrics from one of our textile partners

#### POWER



In seat

### HOW TO ORDER



#### Specify Model

- A** Specify Fabric - Seat<sup>1</sup>  
*Manufacturer, Pattern Name, Color*
- B** Specify Fabric - Back<sup>1</sup>  
*Manufacturer, Pattern Name, Color*
- C** Specify Frame Finish

Optional: CAL 133, Moisture Barrier, Freestanding Tables, Leveling Glides, Power

<sup>1</sup> When multiple fabrics are specified, please provide a drawing and legend for fabric placement.

Model	Fabric - Seat	Fabric - Back 1	Fabric - Back 2	Frame Finish
9102MB	Momentum, Beeline, Canvas	Momentum, Beeline, Canvas	Momentum, Beeline, Canvas	Silver



Pricing March 1, 2020  
Discount 57.7% from List prices



SIN 711-17

# TAILOR Lounge Collection - BOOTH

## MIDBACK

### Standard Features

- Separate seat and back
- Single piece seat upholstery for easier maintenance
- Non wall-saving frame
- Glides
- Ships assembled
- Ships 1 two seat sofa per carton, 43 cu ft
- Ships 1 three seat sofa per carton, 62 cu ft

Contact Spec Customer Service to railroad fabrics (specify repeat info and yardage requirement will be provided) and for repeats greater than 5" x 5"

### Options

- For an individually sewn seat upholstery that creates a gap between seats, call Customer Service
- Leveling glides with inserts (set of 4) are available, add \$20 List
- Upholstered seat/back can match or contrast
- Cove Mini power module centered in the seat front is available in Black, Silver Pearl and Gloss White. Add \$426 List per seat per module
- Antibacterial and antimicrobial fabrics available
- CAL 133



To ensure proper configuration please provide a layout drawing.



Cove Mini

Non Wall-saving Frame

### Two Seat, Midback Booth

COM 5.5 yds  
2.5 yds COM per two seater one-piece seat  
3.0 yds COM per two seater two-piece back (1.5 yds COM per single back)

MODEL	COM	GR 1	GR 2	GR 3	GR 4	GR 5	GR 6
<b>9102MB</b>	<b>1659</b>	<b>1923</b>	<b>2007</b>	<b>2191</b>	<b>2461</b>	<b>2668</b>	<b>2940</b>

Dimensions (inches)							
seat H	18.0	seat W	23.0				
total H	33.0	total W	46.0	depth	27.50		

Exceeds BIFMA Seating Durability Test to 570 lbs  
CAL 133, add \$418 List per unit



**9102MB**  
92 lbs

### Three Seat, Midback Booth

COM 8.25 yds  
3.75 yds COM per three seater one-piece seat  
4.5 yds COM per three seater three-piece back (1.5 yds COM per single back)

MODEL	COM	GR 1	GR 2	GR 3	GR 4	GR 5	GR 6
<b>9103MB</b>	<b>2401</b>	<b>2780</b>	<b>2901</b>	<b>3165</b>	<b>3548</b>	<b>3846</b>	<b>4238</b>

Dimensions (inches)							
seat H	18.0	seat W	23.0				
total H	33.0	total W	69.0	depth	27.50		

Exceeds BIFMA Seating Durability Test to 750 lbs  
CAL 133, add \$627 List per unit



**9103MB**  
137 lbs



Pricing March 1, 2020  
Discount 57.7% from List prices



SIN 711-16

# TAILOR Lounge Collection - BOOTH

## HIGHBACK

### Standard Features

- Separate seat and back
- Single piece seat upholstery for easier maintenance
- Non wall-saving frame
- Glides
- Ships assembled
- Ships 1 two seat sofa per carton, 55 cu ft
- Ships 1 three seat sofa per carton, 79 cu ft

Contact Spec Customer Service to railroad fabrics (specify repeat info and yardage requirement will be provided) and for repeats greater than 5" x 5"

### Options

- For an individually sewn seat upholstery that creates a gap between seats, call Customer Service
- Leveling glides with inserts (set of 4) are available, add \$20 List
- Upholstered seat/back can match or contrast
- Cove Mini power module centered in the seat front is available in Black, Silver Pearl and Gloss White. Add \$426 List per seat per module
- Antibacterial and antimicrobial fabrics available
- CAL 133



To ensure proper configuration please provide a layout drawing.



Cove Mini

Non Wall-saving Frame

### Two Seat, Highback Booth

COM 7.0 yds  
2.5 yds COM per two seater one-piece seat  
4.5 yds COM per two seater two-piece back (2.25 yds COM per single back)

MODEL	COM	GR 1	GR 2	GR 3	GR 4	GR 5	GR 6
<b>9102HB</b>	<b>1894</b>	<b>2265</b>	<b>2386</b>	<b>2644</b>	<b>3023</b>	<b>3316</b>	<b>3700</b>

Dimensions (inches)

seat H	18.0	seat W	23.0				
total H	44.0	total W	46.0	depth	27.50		

Exceeds BIFMA Seating Durability Test to 570 lbs  
CAL 133, add \$543 List per unit



**9102HB**  
90 lbs

### Three Seat, Highback Booth

COM 10.5 yds  
3.75 yds COM per three seater one-piece seat  
6.75 yds COM per three seater three-piece back (2.25 yds COM per single back)

MODEL	COM	GR 1	GR 2	GR 3	GR 4	GR 5	GR 6
<b>9103HB</b>	<b>2754</b>	<b>3294</b>	<b>3467</b>	<b>3844</b>	<b>4393</b>	<b>4817</b>	<b>5377</b>

Dimensions (inches)

seat H	18.0	seat W	23.0				
total H	44.0	total W	69.0	depth	27.50		

Exceeds BIFMA Seating Durability Test to 750 lbs  
CAL 133, add \$829 List per unit



**9103HB**  
149 lbs



Pricing March 1, 2020  
Discount 57.7% from List prices



SIN 711-11

# TAILOR Lounge Collection - BOOTH

## TABLES



MODEL	BASES			TOP SPECIFICATIONS	OPTIONS	LBS
	Code	Size	Qty.			
				For Laminate Top SE 2MM		
<i>Rectangle</i>						
<i>29" high</i>						
<b>30 X 46 RE</b>	<b>TBT</b>	20 X 36	1	1340		123
<b>36 X 46 RE</b>	<b>TBT</b>	26 X 36	1	1611		153
<b>42 X 46 RE</b>	<b>TBT</b>	32 X 36	1	2032		183
<b>30 X 69 RE</b>	<b>TBT</b>	20 X 27	2	2311		185
<b>36 X 69 RE</b>	<b>TBT</b>	26 X 27	2	2587		230
<b>42 X 69 RE</b>	<b>TBT</b>	32 X 27	2	3099		276



**30X46RE TBT**



**30X69RE TBT**

### STANDARD FEATURES

- Select from 15 standard laminates or choose any standard Wilsonart, Nevamar, Formica, Arborite and Pionite matte finish laminates at no upcharge. For other laminate please contact the factory for pricing.
- Standard with leveling glides.
- Bases available in any Spectone color.
- Standard 29" table height.
- Ships Knocked Down.

### HOW TO ORDER

1. Select Model
2. Select Base
3. Select Edge Style
4. Select Options
5. Select Top Finish
6. Select Edge Finish
7. Select Base Finish

**Example:** 3046RE - TBT - 2MM

