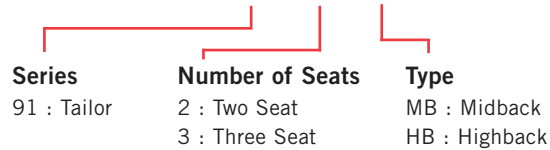


TAILOR Lounge Collection - BOOTH



PRODUCT CODE

91 03 HB



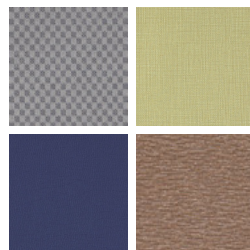
FINISHES

FRAME



Select from one of our 76 standard Spectone colors

FABRIC



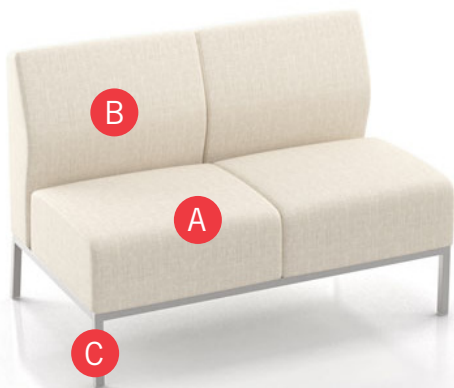
Select fabrics from one of our textile partners

POWER



In seat

HOW TO ORDER



Specify Model

- A** Specify Fabric - Seat¹
Manufacturer, Pattern Name, Color
- B** Specify Fabric - Back¹
Manufacturer, Pattern Name, Color
- C** Specify Frame Finish

Optional: CAL 133, Moisture Barrier, Freestanding Tables, Leveling Glides, Power

¹ When multiple fabrics are specified, please provide a drawing and legend for fabric placement.

Model	Fabric - Seat	Fabric - Back 1	Fabric - Back 2	Frame Finish
9102MB	Momentum, Beeline, Canvas	Momentum, Beeline, Canvas	Momentum, Beeline, Canvas	Silver

TAILOR Lounge Collection - BOOTH

MIDBACK

Standard Features

- Separate seat and back
- Single piece seat upholstery for easier maintenance
- Non wall-saving frame
- Glides
- Ships assembled
- Ships 1 two seat sofa per carton, 43 cu ft
- Ships 1 three seat sofa per carton, 62 cu ft

Contact Spec Customer Service to railroad fabrics (specify repeat info and yardage requirement will be provided) and for repeats greater than 5" x 5"

To ensure proper configuration please provide a layout drawing.

Options

- For an individually sewn seat upholstery that creates a gap between seats, call Customer Service
- Leveling glides with inserts (set of 4) are available, add \$20 List
- Upholstered seat/back can match or contrast
- Cove Mini power module centered in the seat front is available in Black, Silver Pearl and Gloss White. Add \$426 List per seat per module
- Antibacterial and antimicrobial fabrics available
- CAL 133



Cove Mini

Two Seat, Midback Booth

COM 5.5 yds
 2.5 yds COM per two seater one-piece seat
 3.0 yds COM per two seater two-piece back (1.5 yds COM per single back)

MODEL	COM	GR 1	GR 2	GR 3	GR 4	GR 5	GR 6
9102MB	1659	1923	2007	2191	2461	2668	2940

Dimensions (inches)

seat H	18.0	seat W	23.0				
total H	33.0	total W	46.0	depth	27.50		

Exceeds BIFMA Seating Durability Test to 570 lbs
 CAL 133, add \$418 List per unit



9102MB
92 lbs

Three Seat, Midback Booth

COM 8.25 yds
 3.75 yds COM per three seater one-piece seat
 4.5 yds COM per three seater three-piece back (1.5 yds COM per single back)

MODEL	COM	GR 1	GR 2	GR 3	GR 4	GR 5	GR 6
9103MB	2401	2780	2901	3165	3548	3846	4238

Dimensions (inches)

seat H	18.0	seat W	23.0				
total H	33.0	total W	69.0	depth	27.50		

Exceeds BIFMA Seating Durability Test to 750 lbs
 CAL 133, add \$627 List per unit



9103MB
137 lbs

TAILOR Lounge Collection - BOOTH

HIGHBACK

Standard Features

- Separate seat and back
- Single piece seat upholstery for easier maintenance
- Non wall-saving frame
- Glides
- Ships assembled
- Ships 1 two seat sofa per carton, 55 cu ft
- Ships 1 three seat sofa per carton, 79 cu ft

Contact Spec Customer Service to railroad fabrics (specify repeat info and yardage requirement will be provided) and for repeats greater than 5" x 5"

To ensure proper configuration please provide a layout drawing.

Options

- For an individually sewn seat upholstery that creates a gap between seats, call Customer Service
- Leveling glides with inserts (set of 4) are available, add \$20 List
- Upholstered seat/back can match or contrast
- Cove Mini power module centered in the seat front is available in Black, Silver Pearl and Gloss White. Add \$426 List per seat per module
- Antibacterial and antimicrobial fabrics available
- CAL 133



Cove Mini

Two Seat, Highback Booth

COM 7.0 yds
 2.5 yds COM per two seater one-piece seat
 4.5 yds COM per two seater two-piece back (2.25 yds COM per single back)

MODEL	COM	GR 1	GR 2	GR 3	GR 4	GR 5	GR 6
9102HB	1894	2265	2386	2644	3023	3316	3700

Dimensions (inches)

seat H	18.0	seat W	23.0				
total H	44.0	total W	46.0	depth	27.50		

Exceeds BIFMA Seating Durability Test to 570 lbs
 CAL 133, add \$543 List per unit



9102HB
90 lbs

Three Seat, Highback Booth

COM 10.5 yds
 3.75 yds COM per three seater one-piece seat
 6.75 yds COM per three seater three-piece back (2.25 yds COM per single back)

MODEL	COM	GR 1	GR 2	GR 3	GR 4	GR 5	GR 6
9103HB	2754	3294	3467	3844	4393	4817	5377

Dimensions (inches)

seat H	18.0	seat W	23.0				
total H	44.0	total W	69.0	depth	27.50		

Exceeds BIFMA Seating Durability Test to 750 lbs
 CAL 133, add \$829 List per unit



9103HB
149 lbs



TAILOR Lounge Collection - BOOTH

TABLES



MODEL	BASES			TOP SPECIFICATIONS	OPTIONS	LBS
	Code	Size	Qty.			
				For Laminate Top SE 2MM		
<i>Rectangle</i> <i>29" high</i>						
30 X 46 RE	TBT	20 X 36	1	1340		123
36 X 46 RE	TBT	26 X 36	1	1611		153
42 X 46 RE	TBT	32 X 36	1	2032		183
30 X 69 RE	TBT	20 X 27	2	2311		185
36 X 69 RE	TBT	26 X 27	2	2587		230
42 X 69 RE	TBT	32 X 27	2	3099		276



30X46RE TBT

30X69RE TBT

STANDARD FEATURES

- Select from 15 standard laminates or choose any standard Wilsonart, Nevamar, Formica, Arborite and Pionite matte finish laminates at no upcharge. For other laminate please contact the factory for pricing.
- Standard with leveling glides.
- Bases available in any Spectone color.
- Standard 29" table height.
- Ships Knocked Down.

HOW TO ORDER

1. Select Model
2. Select Base
3. Select Edge Style
4. Select Options
5. Select Top Finish
6. Select Edge Finish
7. Select Base Finish

Example: 3046RE - TBT - 2MM

