

TAILOR Lounge Collection - FREESTANDING



PRODUCT CODE

91 02 M

Series
 91 : Tailor

Number of Seats
 01 : Single Seat
 02 : Two Seat
 03 : Three Seat

Chair Type
 M : Mid Back

OPTIONS

ARM GAP



ARM CAP



POWER



In table



In seat

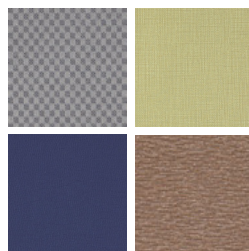
FINISHES

FRAME



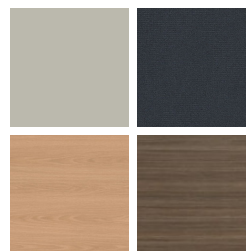
Select from one of our 76 standard Spectone colors

FABRIC



Select fabrics from one of our textile partners

LAMINATE



Select from 15 standard laminates or choose any standard Wilsonart, Nevamar, Formica, Arborite and Pionite matte finish laminates at no upcharge

EDGE



SE

ARM CAPS



Polyurethane

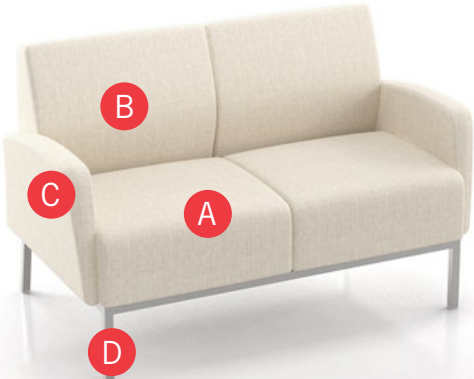
Wood

See Spectone Card or specfurniture.com/materials/finishes for a complete list of finish options and colors.



TAILOR Lounge Collection - FREESTANDING

HOW TO ORDER



Specify Model

- A** Specify Fabric - Seat¹
Manufacturer, Pattern Name, Color
- B** Specify Fabric - Back¹
Manufacturer, Pattern Name, Color
- C** Specify Fabric - Arms¹
Manufacturer, Pattern Name, Color
- D** Specify Frame Finish

Optional: CAL 133, Moisture Barrier, 1" Gap Between Seat and Arm, Arm Caps, Connecting and Freestanding Tables, Power

Restrictions may apply. See price list tables below for more information.

¹ When multiple fabrics are specified on two and three seat chairs, please provide a drawing and legend for fabric placement.



Model	Fabric - Seat 1	Fabric - Seat 2	Fabric - Back 1	Fabric - Back 2	Fabric - Arm 1	Fabric - Arm 2	Frame Finish
9102M	Momentum, Beeline, Canvas	Momentum, Beeline, Canvas	Momentum, Beeline, Canvas	Momentum, Beeline, Canvas	Momentum, Beeline, Canvas	Momentum, Beeline, Canvas	Silver



TAILOR Lounge Collection - FREESTANDING

Standard Features

- Separate seat and back
- Wall-saving frame
- Glides
- Ships assembled
- Ships 1/carton 24 cu ft

Contact Spec Customer Service to railroad fabrics (specify repeat info and yardage requirement will be provided) and for repeats greater than 5" x 5"

Options

- Polyurethane arm caps available in Black (B), Taupe RAL 7006 (T) or Sterling Grey (G), add \$118 List per arm
- For wood arm caps, select from 9 standard stains, or stain-to-match at no upcharge, add \$139 List per arm
- 1" gap between seat and arm available at \$48 List per arm
- Upholstered arms/seat/back can match or contrast
- Cove Mini power module centered in the seat front is available in Black, Silver Pearl and Gloss White. Add \$426 List per seat per module
- Antibacterial and antimicrobial fabrics available
- Freestanding tables available
- CAL 133



Tapered End Arm



Cove Mini

Single Seat Without Arms

COM 2.75 yds
 1.25 yds COM per single seat
 1.5 yds COM per single back

MODEL	COM	GR 1	GR 2	GR 3	GR 4	GR 5	GR 6
9101M-NA	919	1066	1114	1216	1366	1481	1634

Dimensions (inches)
 seat H 18.0 seat W 23.0
 total H 33.0 total W 23.0 total D 29.0

Exceeds BIFMA Seating Durability Test to 500 lbs
 CAL 133, add \$209 List per unit



9101M-NA
43 lbs

Single Seat With Arms

COM 4.25 yds
 1.25 yds COM per single seat
 1.5 yds COM per single back
 0.75 yds COM per arm

MODEL	COM	GR 1	GR 2	GR 3	GR 4	GR 5	GR 6
9101M	1265	1494	1569	1727	1962	2142	2381

Dimensions (inches)
 seat H 18.0 seat W 23.0 arm H 24.5
 total H 33.0 total W 29.5 total D 29.0

Exceeds BIFMA Seating Durability Test to 500 lbs
 CAL 133, add \$323 List per unit



9101M
67 lbs



TAILOR Lounge Collection - FREESTANDING

Standard Features

- Separate seat and back
- Wall-saving frame
- Glides
- Ships assembled
- Ships 1/carton 32 cu ft

Contact Spec Customer Service to railroad fabrics (specify repeat info and yardage requirement will be provided) and for repeats greater than 5" x 5"

Options

- Polyurethane arm caps available in Black (B), Taupe RAL 7006 (T) or Sterling Grey (G), add \$118 List per arm
- For wood arm caps, select from 9 standard stains, or stain-to-match at no upcharge, add \$139 List per arm
- 1" gap between seat and arm available at \$48 List per arm
- Upholstered arms/seat/back can match or contrast
- Cove Mini power module centered in the seat front is available in Black, Silver Pearl and Gloss White. Add \$426 List per seat per module
- Antibacterial and antimicrobial fabrics available
- Freestanding tables available
- CAL 133



Tapered End Arm



Cove Mini



Bariatric Single Seat With Arms

COM 5 yds
 1.5 yds COM per single seat
 2 yds COM per single back
 0.75 yds COM per arm

MODEL	COM	GR 1	GR 2	GR 3	GR 4	GR 5	GR 6
9101G	1397	1671	1761	1950	2229	2443	2727

Dimensions (inches)

seat H	18.0	seat W	30.0	arm H	24.5
total H	33.0	total W	36.5	depth	29.0

Exceeds BIFMA Seating Durability Test to 750 lbs
 CAL 133, add \$381 List per unit



9101G
75 lbs



TAILOR Lounge Collection - FREESTANDING

Standard Features

- Separate seat and back
- Wall-saving frame
- Glides
- Ships assembled
- Ships 1/carton 43 cu ft

Contact Spec Customer Service to railroad fabrics (specify repeat info and yardage requirement will be provided) and for repeats greater than 5" x 5"

Options

- Polyurethane arm caps available in Black (B), Taupe RAL 7006 (T) or Sterling Grey (G), add \$118 List per arm
- For wood arm caps, select from 9 standard stains, or stain-to-match at no upcharge, add \$139 List per arm
- 1" gap between seat and arm available at \$48 List per arm
- Upholstered arms/seat/back can match or contrast
- Cove Mini power module centered in the seat front is available in Black, Silver Pearl and Gloss White. Add \$426 List per seat per module
- Antibacterial and antimicrobial fabrics available
- Freestanding tables available
- CAL 133



Tapered End Arm



Cove Mini

Two Seat Without Arms

COM 5.5 yds
 1.25 yds COM per single seat
 1.5 yds COM per single back

MODEL	COM	GR 1	GR 2	GR 3	GR 4	GR 5	GR 6
9102M-NA	1629	1923	2020	2222	2523	2753	3059

Dimensions (inches)
 seat H 18.0 seat W 23.0
 total H 33.0 total W 46.0 total D 29.0

Exceeds BIFMA Seating Durability Test to 570 lbs
 CAL 133, add \$418 List per unit



9102M-NA
92 lbs

Two Seat With Arms

COM 7 yds
 1.25 yds COM per single seat
 1.5 yds COM per single back
 0.75 yds COM per arm

MODEL	COM	GR 1	GR 2	GR 3	GR 4	GR 5	GR 6
9102M	1974	2351	2474	2735	3119	3414	3805

Dimensions (inches)
 seat H 18.0 seat W 23.0 arm H 24.5
 total H 33.0 total W 52.5 total D 29.0

Exceeds BIFMA Seating Durability Test to 570 lbs
 CAL 133, add \$532 List per unit



9102M
116 lbs



TAILOR Lounge Collection - FREESTANDING

Standard Features

- Separate seat and back
- Wall-saving frame
- Glides
- Ships assembled
- Ships 1/carton 62 cu ft

Contact Spec Customer Service to railroad fabrics (specify repeat info and yardage requirement will be provided) and for repeats greater than 5" x 5"

Options

- Polyurethane arm caps available in Black (B), Taupe RAL 7006 (T) or Sterling Grey (G), add \$118 List per arm
- For wood arm caps, select from 9 standard stains, or stain-to-match at no upcharge, add \$139 List per arm
- 1" gap between seat and arm available at \$48 List per arm
- Upholstered arms/seat/back can match or contrast
- Cove Mini power module centered in the seat front is available in Black, Silver Pearl and Gloss White. Add \$426 List per seat per module
- Antibacterial and antimicrobial fabrics available
- Freestanding tables available
- CAL 133



Tapered End Arm



Cove Mini



Three Seat Without Arms

COM 8.25 yds
 1.25 yds COM per single seat
 1.5 yds COM per single back

MODEL	COM	GR 1	GR 2	GR 3	GR 4	GR 5	GR 6
9103M-NA	2338	2780	2924	3229	3680	4026	4483

Dimensions (inches)
 seat H 18.0 seat W 23.0
 total H 33.0 total W 69.0 depth 29.0

Exceeds BIFMA Seating Durability Test to 750 lbs
 CAL 133, add \$627 List per unit



9103M-NA
137 lbs

Three Seat With Arms

COM 9.75 yds
 1.25 yds COM per single seat
 1.5 yds COM per single back
 0.75 yds COM per arm

MODEL	COM	GR 1	GR 2	GR 3	GR 4	GR 5	GR 6
9103M	2684	3208	3380	3742	4276	4686	5229

Dimensions (inches)
 seat H 18.0 seat W 23.0 arm H 24.5
 total H 33.0 total W 75.5 depth 29.0

Exceeds BIFMA Seating Durability Test to 750 lbs
 CAL 133, add \$741 List per unit



9103M
161 lbs



TAILOR Lounge Collection - FREESTANDING TABLES

Standard Features

- Tables in laminate or veneer
- Select laminate tops from 15 standard laminates or choose any standard Wilsonart, Nevamar, Formica, Arborite and Pionite matte finish laminates at no upcharge.
- 9 standard veneers. Stain-to-match available at no upcharge.
- Tables available with Self Edge (SE) only
- Steel table legs available in any Spectone color
- Tops utilize NU Green earth friendly core
- Glides
- Ships assembled
- 18" height

Options

- To add Cove Mini, clamp mounted with 1 power, 2 USB (charging only), and a 108" long cord to Tailor freestanding tables, add \$344 List. Cove will be located on the flat front face of the closed tables as standard. It is not recommended to specify power on open tables. Specify separately at time of order.



- Black **COVSMC1P1U-B**
- Silver Pearl **COVSMC1P1U-S**
- Gloss White **COVSMC1P1U-W**



Freestanding Lounge Tables

Model	Laminate SE	Veneer SE	Weight	Cu.Ft.
91ETC - 24 x 24 SQ <i>End Table Closed - 24 x 24</i>	969	1357	39	11
91ETO - 24 x 24 SQ <i>End Table Open - 24 x 24</i>	991	1387	38	11
91REC - 24 x 48 RE <i>Coffee Table Closed - 24 x 48</i>	1109	1552	67	20
91REOS - 24 x 48 RE <i>Coffee Table Open, One Side - 24 x 48</i>	1328	1860	67	20
91REOB - 24 x 48 RE <i>Coffee Table Open, Both Sides - 24 x 48</i>	1360	1904	71	20



91ETC
39 lbs



91ETO
38 lbs



91REC
67 lbs



91REOS
67 lbs



91REOB
71 lbs