



Pricing March 1, 2020
Discount 57.7% from List prices



SIN 711-17

TRAFFIC Public Seating

LAYOUTS

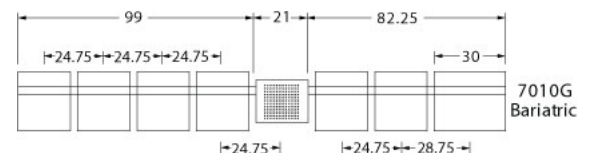
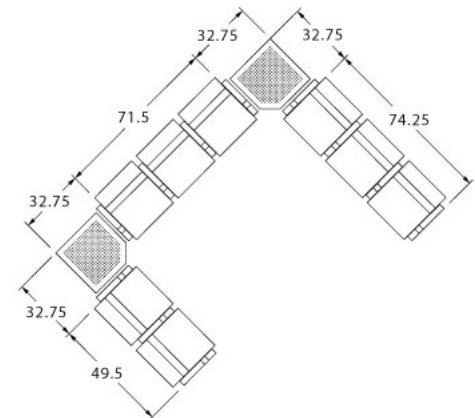
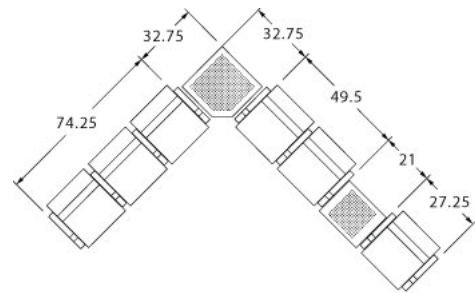


Description

- Today's high traffic public areas demand high durability and low maintenance without sacrificing design.
- Perforated steel seats, with optional field replaceable cushions, can be connected with perforated steel or laminate spacer tables to fit virtually any layout.
- Standard seat width is 22". Bariatric seating is a 30" wide seat and is load tested to 750 lbs.
- Seat, leg column and foot can be specified in different finishes.
- Arms or armless can be specified in any standard width combination.
- Arms only for Bariatric.
- Please send a drawing of the configuration you require with your order.
- Optional floor mounting brackets available.
- Seat mounting option location offers wall-saving if desired.
- For fabrics you wish railroaded or repeats larger than 5" x 5", please contact the factory with repeat information and yardage requirement will be provided.



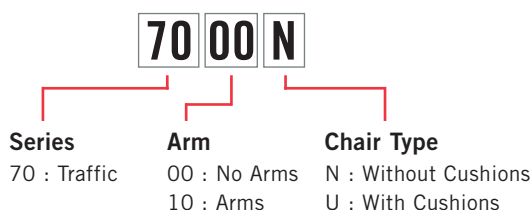
LAYOUTS AND DIMENSIONS



TRAFFIC Public Seating



PRODUCT CODE



OPTIONS



Without Cushion



With Cushion



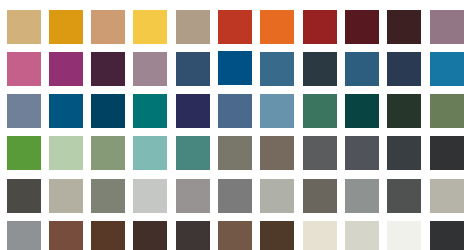
With Arms



Without Arms

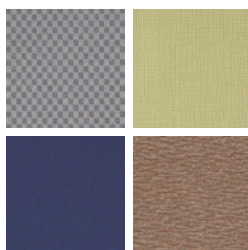
FINISHES

FRAME



Select from one of our 76 standard Spectone colors

FABRIC

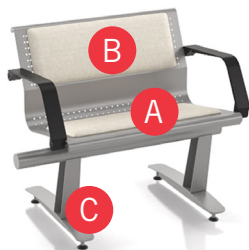


Select fabrics from one of our textile partners

See Spectone Card or specfurniture.com/materials/finishes for a complete list of finish options and colors.

HOW TO ORDER

Specify Model



- A** Specify Fabric - Seat, If Applicable
Manufacturer, Pattern Name, Color
- B** Specify Fabric - Back, If Applicable
Manufacturer, Pattern Name, Color
- C** Specify Frame Finish

Optional: CAL 133, Moisture Barrier, Floor Mounting Brackets, Connecting Tables

Model	Fabric - Seat	Fabric - Back	Frame Finish
7000U	Momentum, Beeline, Canvas	Momentum, Beeline, Canvas	Silver



Pricing March 1, 2020
Discount 57.7% from List prices



SIN 711-17

TRAFFIC Public Seating

Perforated Beam without arms

Standard Features

- Available with or without replaceable upholstered cushions
- Available with or without black polyurethane arms
- Frame in any Spectone color
- Levelers
- Can be mounted standard or wall-saving
- Ships KD
- Ships 1/carton 11.5 cu ft/seat

Options

- Corner and spacer tables
- Use in connected layouts at no upcharge
- Floor mounting brackets, add \$51 List / leg. Includes 2 brackets per leg.
- Antibacterial and antimicrobial fabrics available
- CAL 133



Prices are per seat and include beam and base

Contact Spec Customer Service to railroad fabrics (specify repeat info and yardage requirement will be provided) and for repeats greater than 5" x 5"



Traffic without arms, without upholstered cushions

N/A COM per single seat

MODEL	LIST
7000N	837

Dimensions (inches)

seat H	18.75	seat W	22.0	depth	25.5
total H	31.75	total W	24.75	depth wall-saving	27.5

Exceeds BIFMA Seating Durability Test to 500 lbs per seat



7000N
43 lbs/seat

Traffic without arms, with upholstered cushions

0.5 yd COM per single seat and back

MODEL	COM	GR 1	GR 2	GR 3	GR 4	GR 5	GR 6
7000U	858	899	915	942	985	1019	1060

Dimensions (inches)

seat H	19.25	seat W	22.0	depth	25.5
total H	32.0	total W	24.75	depth	27.5

Exceeds BIFMA Seating Durability Test to 500 lbs per seat
CAL 133, add \$60 List per seat



7000U
44 lbs/seat



Pricing March 1, 2020
Discount 57.7% from List prices



SIN 711-17

TRAFFIC Public Seating

Perforated Beam with arms

Standard Features

- Available with or without replaceable upholstered cushions
- Available with or without black polyurethane arms
- Frame in any Spectone color
- Levelers
- Can be mounted standard or wall-saving
- Ships KD
- Ships 1/carton 11.5 cu ft/seat

Options

- Corner and spacer tables
- Use in connected layouts at no upcharge
- Floor mounting brackets, add \$51 List / leg. Includes 2 brackets per leg.
- Antibacterial and antimicrobial fabrics available
- CAL 133



Prices are per seat and include beam and base

Contact Spec Customer Service to railroad fabrics (specify repeat info and yardage requirement will be provided) and for repeats greater than 5" x 5"



Traffic with arms, without upholstered cushions

N/A COM per single seat

MODEL	LIST
7010N	837

Dimensions (inches)

seat H	18.75	seat W	22.0	depth	25.5
total H	31.75	total W	24.75	depth wall-saving	27.5

Exceeds BIFMA Seating Durability Test to 500 lbs per seat



7010N
47 lbs/seat

Traffic with arms and upholstered cushions

0.5 yd COM per single seat and back

MODEL	COM	GR 1	GR 2	GR 3	GR 4	GR 5	GR 6
7010U	858	899	915	942	985	1019	1060

Dimensions (inches)

seat H	19.25	seat W	22.0	arm H	27.25		
total H	32.0	total W	24.75	depth	25.5	depth wall-saving	27.5

Exceeds BIFMA Seating Durability Test to 500 lbs per seat

CAL 133, add \$60 List per seat



7010U
48 lbs/seat



Pricing March 1, 2020
Discount 57.7% from List prices



SIN 711-17

TRAFFIC Public Seating

Bariatric Perforated Beam with arms

Standard Features

- Available with or without replaceable upholstered cushions
- Black polyurethane arms
- Frame in any Spectone color
- Levelers
- Not available as freestanding unit
- Can be mounted standard or wall-saving
- Cannot connect bariatric seats to bariatric seats
- Ships KD
- Ships 1/carton 11.5 cu ft/seat

Options

- Corner and spacer tables
- Use in connected layouts at no upcharge
- Floor mounting brackets, add \$51 List / leg. Includes 2 brackets per leg.
- Antibacterial and antimicrobial fabrics available
- CAL 133



Prices are per seat and include beam and base

Contact Spec Customer Service to railroad fabrics (specify repeat info and yardage requirement will be provided) and for repeats greater than 5" x 5"



Bariatric Traffic with arms, without upholstered cushions

N/A COM per single seat

MODEL	COM
7010NG	1091

Dimensions (inches)

seat H	18.75	seat W	30.0	arm H	27.25		
total H	31.75	total W	32.75	depth	25.5	depth wall-saving	27.5

Exceeds BIFMA Seating Durability Test to 750 lbs per seat



7010NG
47 lbs/seat

Bariatric Traffic with arms and upholstered cushions

0.75 yd COM per single seat and back

MODEL	COM	GR 1	GR 2	GR 3	GR 4	GR 5	GR 6
7010UG	1102	1163	1184	1222	1282	1327	1388

Dimensions (inches)

seat H	19.25	seat W	30.0	arm H	27.25		
total H	32.0	total W	32.75	depth	25.5	depth wall-saving	27.5

Exceeds BIFMA Seating Durability Test to 750 lbs per seat

CAL 133, add \$72 List per seat



7010UG
48 lbs/seat



TRAFFIC Public Seating

Corner and Spacer Connecting Tables

Standard Features

- Select laminate tops from 15 standard laminates or choose any standard Wilsonart, Nevamar, Formica, Arborite and Pionite matte finish laminates at no upcharge.
- Self edge (SE) or PVC Flat (PVF) edge
- Use in connected layouts at no upcharge
- Tops utilize NU Green earth friendly core
- Radius table only available in laminate
- 18" height
- Ships KD

Options

- Non-standard laminates, contact Spec for pricing
- Tops in perforated metal
- Veneer and hardwood edges

Radius Corner Tables are recommended for open areas



Corner and Spacer Connecting Tables

Model	Laminate PVF/SE	Perforated Metal	Weight	Cu.Ft.
70RC 30 x 30 <i>Radius Corner Table</i>	702	N/A	31	3
70SC 30 x 30 <i>Square Corner Table</i>	702	899	32	3
70ST 21 x 21 <i>Spacer or End Table</i>	676	761	21	3

