



Pricing March 1, 2020  
Discount 57.7% from List prices



MAS SIN 33721

## TWENTY2 Nesting Series



### PRODUCT CODE

**1705 - US**

**Series**

17 : Twenty2

**Arm**

0 : Arms  
1 : Armless

**Casters**

4 : Glides  
5 : Casters

**Upholstery**

N/A : Plastic  
US : Upholstered Seat / Plastic Back  
UP : Fully Upholstered

### OPTIONS

#### UPHOLSTERY



Plastic



Upholstered Seat



Fully Upholstered

#### FOOT



Glide



Casters

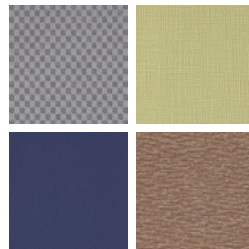
### FINISHES

#### FRAME



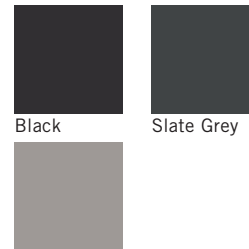
Select from one of our 76 standard Spectone colors

#### FABRIC



Select fabrics from one of our textile partners

#### PLASTIC



Black

Slate Grey

Light Grey

See Spectone Card or [specfurniture.com/materials/finishes](http://specfurniture.com/materials/finishes) for a complete list of finish options and colors.



Pricing March 1, 2020  
Discount 57.7% from List prices



MAS SIN 33721

## TWENTY2 Nesting Series

### HOW TO ORDER



#### Specify Model

- A** Specify Seat Type and Finish  
*For Upholstered Seat: Manufacturer, Pattern Name, Color*  
*For Plastic Seat: Color*  
*Plastic Underside: Color*
- B** Specify Back Type and Finish  
*For Upholstered Back: Manufacturer, Pattern Name, Color*  
*For Plastic Back: Color*
- C** Specify Frame Finish

Optional: CAL 133, 1/2" Extra Foam, Soft Wheel Casters



Model	Seat Type and Finish	Back Type and Finish	Frame Finish
1705-US	Upholstery, Momentum, Millennium, Thrill	Plastic, Black	Silver



Pricing March 1, 2020  
Discount 57.7% from List prices



MAS SIN 33721

# TWENTY2 Nesting Series

Plastic Seat and Back

## Standard Features

- Plastic seat and back
- 0.875" diameter, 11 gauge frame
- Black nylon arms
- Frame in any Spectone color
- Black arms with inner steel support
- Ships 4/carton

## Options

- For Soft Wheel casters, specify suffix SC and add \$20 List to the chair with casters
- Specify shell finish. Choose from Black RAL 9005, Light Grey RAL 7037 or Slate Grey RAL 7043
- CAL 133



## Twenty2 – With Glides

MODEL	PRICE
1704	571
1714	524

Dimensions (inches)

seat H	18	seat W	22	seat D	18	arm H	25.5
total H	32	total W	25.5	total W (no arms)	24	total D	21.5

Exceeds BIFMA Seating Durability Test to 500 lbs  
CAL 133, add \$103 List



**1704**  
With arms  
21 lbs



**1714**  
Without arms  
19 lbs

## Twenty2 – With Casters

MODEL	PRICE
1705	571
1715	524

Dimensions (inches)

seat H	18	seat W	22	seat D	18	arm H	25.5
total H	32	total W	25.5	total W (no arms)	24	total D	21.5

Exceeds BIFMA Seating Durability Test to 500 lbs  
CAL 133, add \$103 List



**1705**  
With arms  
21 lbs



**1715**  
Without arms  
19 lbs



Pricing March 1, 2020  
Discount 57.7% from List prices



MAS SIN 33721

# TWENTY2 Nesting Series

Upholstered Seat and Plastic Back

## Standard Features

- Upholstered seat and plastic back
- 0.875" diameter, 11 gauge frame
- Black nylon arms
- Frame in any Spectone color
- Black arms with inner steel support
- Ships 4/carton

## Options

- For Soft Wheel casters, specify suffix SC and add \$20 List to the chair with casters
- Specify back finish. Choose from Black RAL 9005, Light Grey RAL 7037 or Slate Grey RAL 7043
- Antibacterial and antimicrobial fabrics available
- CAL 133



## Twenty2 – With Glides

COM 0.35 yd  
0.35 yd COM per single seat

MODEL	COM	GR1	GR2	GR3	GR4	GR5	GR6
1704-US	656	677	684	699	719	735	757
1714-US	608	630	636	650	671	687	709

Dimensions (inches)

seat H	18	seat W	22	seat D	18	arm H	25.5
total H	32	total W	25.5	total W (no arms)	24	total D	21.5

Exceeds BIFMA Seating Durability Test to 500 lbs  
CAL 133, add \$113 List  
1/2" extra foam, specify and add \$22 List



1704-US  
With arms  
23 lbs



1714-US  
Without arms  
21 lbs

## Twenty2 – With Casters

COM 0.35 yd  
0.35 yd COM per single seat

MODEL	COM	GR1	GR2	GR3	GR4	GR5	GR6
1705-US	656	677	684	699	719	735	757
1715-US	608	630	636	650	671	687	709

Dimensions (inches)

seat H	18	seat W	22	seat D	18	arm H	25.5
total H	32	total W	25.5	total W (no arms)	24	total D	21.5

Exceeds BIFMA Seating Durability Test to 500 lbs  
CAL 133, add \$113 List  
1/2" extra foam, specify and add \$22 List



1705-US  
With arms  
23 lbs



1715-US  
Without arms  
21 lbs



Pricing March 1, 2020  
Discount 57.7% from List prices



MAS SIN 33721

# TWENTY2 Nesting Series

Upholstered Seat and Back

## Standard Features

- Upholstered seat and back
- 0.875" diameter, 11 gauge frame
- Black nylon arms
- Frame in any Spectone color
- Black arms with inner steel support
- Ships 4/carton

## Options

- For Soft Wheel casters, specify suffix SC and add \$20 List to the chair with casters
- Antibacterial and antimicrobial fabrics available
- Different fabric on seat and back at no upcharge
- CAL 133



### Twenty2 – With Glides

COM 0.7 yd  
0.35 yd COM per single seat  
0.35 yd COM per single back

MODEL	COM	GR1	GR2	GR3	GR4	GR5	GR6
1704-UP	669	710	724	753	795	826	869
1714-UP	620	662	676	705	747	778	822

Dimensions (inches)  
seat H 18 seat W 22 seat D 18 arm H 25.5  
total H 32 total W 25.5 total W (no arms) 24 total D 21.5

Exceeds BIFMA Seating Durability Test to 500 lbs  
CAL 133, add \$124 List  
1/2" extra foam, specify and add \$22 List



**1704-UP**  
With arms  
23 lbs



**1714-UP**  
Without arms  
21 lbs

### Twenty2 – With Casters

COM 0.7 yd  
0.35 yd COM per single seat  
0.35 yd COM per single back

MODEL	COM	GR1	GR2	GR3	GR4	GR5	GR6
1705-UP	669	710	724	753	795	826	869
1715-UP	620	662	676	705	747	778	822

Dimensions (inches)  
seat H 18 seat W 22 seat D 18 arm H 25.5  
total H 32 total W 25.5 total W (no arms) 24 total D 21.5

Exceeds BIFMA Seating Durability Test to 500 lbs  
CAL 133, add \$124 List  
1/2" extra foam, specify and add \$22 List



**1705-UP**  
With arms  
23 lbs



**1715-UP**  
Without arms  
21 lbs