

# TWENTY2 Nesting Series



PLACING AN ORDER IS EASY

**PRODUCT CODE**

**17 05 - US**

**Series**

17 : Twenty2

**Arm**

0 : Arms  
1 : Armless

**Casters**

4 : Glides  
5 : Casters

**Upholstery**

N/A : Plastic  
US : Upholstered Seat / Plastic Back  
UP : Fully Upholstered



**OPTIONS**

**UPHOLSTERY**



Plastic



Upholstered Seat



Fully Upholstered

**FOOT**



Glide



Casters

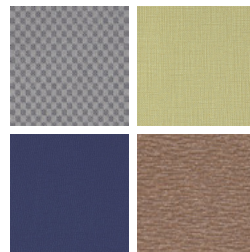
**FINISHES**

**FRAME**



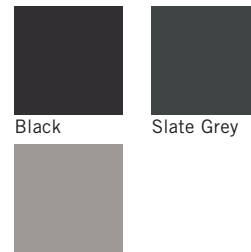
Select from one of our 76 standard Spectone colors

**FABRIC**



Select fabrics from one of our textile partners

**PLASTIC**



Black

Slate Grey

Light Grey

# TWENTY2 Nesting Series

## Plastic Seat and Back

### Standard Features

- Plastic seat and back
- 0.875" diameter, 11 gauge frame
- Black nylon arms
- Frame in any Spectone color
- Black glass-filled nylon arms with inner steel support
- Ships 4/carton

### Options

- For Soft Wheel casters, specify suffix SC and add \$20 List
- Specify shell finish. Choose from Black RAL 9005, Light Grey RAL 7037 or Slate Grey RAL 7043
- CAL 133




---

### Twenty2 – With Glides

---

MODEL	PRICE
<b>1704</b>	<b>533</b>
<b>1714</b>	<b>489</b>

Dimensions (inches)

seat H	18	seat W	22	seat D	18	arm H	25.5
total H	32	total W	27.25	total D	21.5		

Exceeds BIFMA Seating Durability Test to 500 lbs  
 CAL 133, add \$96 List



**1704**  
**With arms**  
 22 lbs



**1714**  
**Without arms**  
 20.5 lbs

---

### Twenty2 – With Casters

---

MODEL	PRICE
<b>1705</b>	<b>533</b>
<b>1715</b>	<b>489</b>

Dimensions (inches)

seat H	18	seat W	22	seat D	18	arm H	25.5
total H	32	total W	27.25	total D	21.5		

Exceeds BIFMA Seating Durability Test to 500 lbs  
 CAL 133, add \$96 List



**1705**  
**With arms**  
 22 lbs



**1715**  
**Without arms**  
 20.5 lbs



# TWENTY2 Nesting Series

Upholstered Seat and Plastic Back

## Standard Features

- Upholstered seat and plastic back
- 0.875" diameter, 11 gauge frame
- Black nylon arms
- Frame in any Spectone color
- Black glass-filled nylon arms with inner steel support
- Ships 4/carton

## Options

- For Soft Wheel casters, specify suffix SC and add \$20 List
- Specify back finish. Choose from Black RAL 9005, Light Grey RAL 7037 or Slate Grey RAL 7043
- Antibacterial and antimicrobial fabrics available
- CAL 133



### Twenty2 – With Glides

COM 0.35 yd  
0.35 yd COM per single seat

MODEL	COM	GR1	GR2	GR3	GR4	GR5	GR6
1704-US	613	632	639	652	671	686	707
1714-US	568	588	594	607	626	642	662

Dimensions (inches)

seat H	18	seat W	22	seat D	18	arm H	25.5
total H	32	total W	27.25	total D	21.5		

Exceeds BIFMA Seating Durability Test to 500 lbs  
CAL 133, add \$106 List  
1/2" extra foam, specify and add \$20 List



**1704-US**  
With arms  
22 lbs



**1714-US**  
Without arms  
20.5 lbs

### Twenty2 – With Casters

COM 0.35 yd  
0.35 yd COM per single seat

MODEL	COM	GR1	GR2	GR3	GR4	GR5	GR6
1705-US	613	632	639	652	671	686	707
1715-US	568	588	594	607	626	642	662

Dimensions (inches)

seat H	18	seat W	22	seat D	18	arm H	25.5
total H	32	total W	27.25	total D	21.5		

Exceeds BIFMA Seating Durability Test to 500 lbs  
CAL 133, add \$106 List  
1/2" extra foam, specify and add \$20 List



**1705-US**  
With arms  
22 lbs



**1715-US**  
Without arms  
20.5 lbs



# TWENTY2 Nesting Series

## Upholstered Seat and Back

### Standard Features

- Upholstered seat and back
- 0.875" diameter, 11 gauge frame
- Black nylon arms
- Frame in any Spectone color
- Black glass-filled nylon arms with inner steel support
- Ships 4/carton

### Options

- For Soft Wheel casters, specify suffix SC and add \$20 List
- Antibacterial and antimicrobial fabrics available
- Different fabric on seat and back at no upcharge
- CAL 133



### Twenty2 – With Glides

COM 0.7 yd  
 0.35 yd COM per single seat  
 0.35 yd COM per single back

MODEL	COM	GR1	GR2	GR3	GR4	GR5	GR6
1704-UP	624	663	676	703	742	771	812
1714-UP	579	618	631	658	697	726	767

Dimensions (inches)

seat H	18	seat W	22	seat D	18	arm H	25.5
total H	32	total W	27.25	total D	21.5		

Exceeds BIFMA Seating Durability Test to 500 lbs  
 CAL 133, add \$116 List  
 1/2" extra foam, specify and add \$20 List



**1704-UP**  
 With arms  
 22 lbs



**1714-UP**  
 Without arms  
 20.5 lbs

### Twenty2 – With Casters

COM 0.7 yd  
 0.35 yd COM per single seat  
 0.35 yd COM per single back

MODEL	COM	GR1	GR2	GR3	GR4	GR5	GR6
1705-UP	624	663	676	703	742	771	812
1715-UP	579	618	631	658	697	726	767

Dimensions (inches)

seat H	18	seat W	22	seat D	18	arm H	25.5
total H	32	total W	27.25	total D	21.5		

Exceeds BIFMA Seating Durability Test to 500 lbs  
 CAL 133, add \$116 List  
 1/2" extra foam, specify and add \$20 List



**1705-UP**  
 With arms  
 22 lbs



**1715-UP**  
 Without arms  
 20.5 lbs