

URBAN Public Seating



PRODUCT CODE

14 01 US

Series

14 : Urban

Chair Type

- 01 : Four Point/Arms
- 11 : Four Point/No Arms
- 31 : Sled Base/Arms
- 41 : Sled Base/No Arms
- 02 : Casters/Arms
- 21 : Stool/Arms
- 25 : Stool/No Arms
- 21E : Hip Chair

Upholstery

- N/A : DuraSpec Seat/Plastic Back
- US : Upholstered Seat/Plastic back
- UB : DuraSpec Seat/Upholstered Back
- UP : Fully Upholstered

OPTIONS

SEAT



DuraSpec

Upholstered

BACK



Plastic

Upholstered

S Wood
9 standard stains or stain to match

WALL-SAVING



FINISHES

PLASTIC BACK



Black

Light Grey

White

PLASTIC BACK COVER



Black

Light Grey

White

DURASPEC SEAT



Black

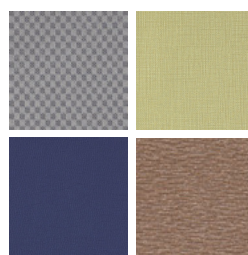
Sterling Grey

FRAME



Select from one of our 76 standard Spectone colors

FABRIC



Select fabrics from one of our textile partners

ARMS

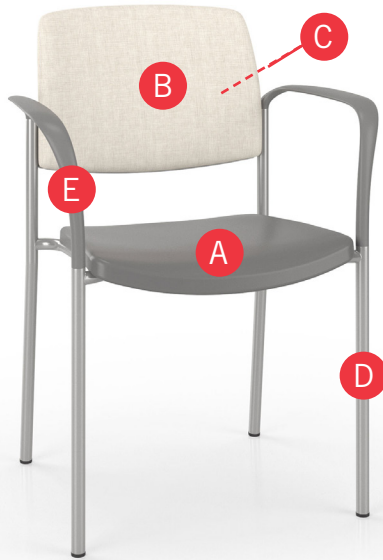


Black

Sterling Grey

URBAN Public Seating - POLY SEAT & UPHOLSTERED BACK

HOW TO ORDER



Specify Model

- A** Specify Seat Type and Color
For DuraSpec Seat: Color
- B** Specify Back Type and Color
For Upholstered Back: Fabric Manufacturer, Pattern Name, Color
- C** Specify Back Panel Color
- D** Specify Frame Finish
- E** Specify Polyurethane Arm Color

Optional: CAL 133, Moisture Barrier, Wall-saving Frame, Connecting Bars, Connecting Tables, Dolly



Model	Seat Type and Color	Back Type and Color	Back Panel Color	Frame Finish	Polyurethane Arm Color
1401-UB	DuraSpec, Sterling Grey	Momentum, Beeline, Canvas	White (not shown)	Silver	Sterling Grey

URBAN Public Seating - POLY SEAT & UPHOLSTERED BACK

Four-point and Sled Base

Standard Features

- 0.875" frame
- DuraSpec Poly seat and Upholstered back
- DuraSpec Poly seat available in Black or Sterling Grey
- Frame in any Spectone color
- Four-point stacks up to 8 high with dolly.
- Sled Base does not stack and ships 1 per carton
- Ships 1/carton 11 cu ft, 2-4/carton 22 cu ft

Contact Spec Customer Service to railroad fabrics (specify repeat info and yardage requirement will be provided) and for repeats greater than 5" x 5"

Options

- Wall-saving frame on Four-point only, add \$22 List,
- Specify back panel in Black RAL 9005, Light Grey RAL 7037 or White RAL 9016
- Polyurethane arms available in Black (B) or Sterling Grey (G)
- Connecting bars for a structured reconfigurable layout, add \$83 List
- Antibacterial and antimicrobial fabrics available
- Other glides may be available for an upcharge - call Customer Service to inquire



Urban, DuraSpec Poly Seat & Upholstered Back – Four-point

COM 0.5 yd
0.5 yd COM per single back

MODEL	COM	GR 1	GR 2	GR 3	GR 4	GR 5	GR 6
1401-UB	341	371	381	400	431	452	484
1411-UB	341	371	381	400	431	452	484

Dimensions (inches)

	seat H	18.0	seat W	18.0	arm H	27.0	total H	32.5
depth	22.0	total W	24.0	total W (no arms)	20.1			

Exceeds BIFMA Seating Durability Test to 500 lbs



Urban, DuraSpec Poly Seat & Upholstered Back – Sled Base

COM 0.5 yd
0.5 yd COM per single back

MODEL	COM	GR 1	GR 2	GR 3	GR 4	GR 5	GR 6
1431-UB	417	447	457	477	506	529	560
1441-UB	417	447	457	477	506	529	560

Dimensions (inches)

	seat H	18.0	seat W	18.0	arm H	27.0	total H	32.5
depth	22.0	total W	24.0	total W (no arms)	20.1			

Exceeds BIFMA Seating Durability Test to 500 lb



URBAN Public Seating - POLY SEAT & UPHOLSTERED BACK

Midsize – Four-point and Sled Base

Standard Features

- 0.875" frame
- DuraSpec Poly seat and Upholstered back
- DuraSpec Poly seat available in Black or Sterling Grey
- Frame in any Spectone color
- Four-point stacks up to 4 high with dolly.
- Sled Base does not stack and ships 1 per carton
- Ships 1-3/carton 21.24 cu ft

Contact Spec Customer Service to railroad fabrics (specify repeat info and yardage requirement will be provided) and for repeats greater than 5" x 5"

Options

- Wall-saving frame on Four-point only, add \$22 List.
- Specify back panel in Black RAL 9005, Light Grey RAL 7037 or White RAL 9016
- Polyurethane arms available in Black (B) or Sterling Grey (G)
- Connecting bars for a structured reconfigurable layout, add \$83 List
- Antibacterial and antimicrobial fabrics available
- Other glides may be available for an upcharge - call Customer Service to inquire



Urban, DuraSpec Poly Seat & Upholstered Back – Midsize – Four-point

COM 0.75 yd
0.75 yd COM per single back

MODEL	COM	GR 1	GR 2	GR 3	GR 4	GR 5	GR 6
1404-UB	480	539	558	598	657	703	763
1414-UB	480	539	558	598	657	703	763

Dimensions (inches)

	seat H	18.0	seat W	22.0	arm H	27.0	total H	32.5
depth	22.0	total W	27.8	total W (no arms)	24.0			

Exceeds BIFMA Seating Durability Test to 500 lbs



Urban, DuraSpec Poly Seat & Upholstered Back – Midsize – Sled Base

COM 0.75 yd
0.75 yd COM per single back

MODEL	COM	GR 1	GR 2	GR 3	GR 4	GR 5	GR 6
1434-UB	556	615	633	674	733	779	839
1444-UB	556	615	633	674	733	779	839

Dimensions (inches)

	seat H	18.0	seat W	22.0	arm H	27.0	total H	32.5
depth	22.0	total W	27.8	total W (no arms)	24.0			

Exceeds BIFMA Seating Durability Test to 500 lbs





URBAN Public Seating - POLY SEAT & UPHOLSTERED BACK

Casters

Standard Features

- 0.875" frame
- DuraSpec Poly seat and Upholstered back
- DuraSpec Poly seat available in Black or Sterling Grey
- Frame in any Spectone color
- Four-point stacks up to 8 high with dolly.
- Ships 1/carton 11 cu ft, 2-4/carton 22 cu ft

Options

- Specify back panel in Black RAL 9005, Light Grey RAL 7037 or White RAL 9016
- Polyurethane arms available in Black (B) or Sterling Grey (G)
- Antibacterial and antimicrobial fabrics available
- Armless and sled base versions not available

Contact Spec Customer Service to railroad fabrics (specify repeat info and yardage requirement will be provided) and for repeats greater than 5" x 5"



Upholstered Back & Plastic Back Panel



Urban, DuraSpec Poly Seat & Upholstered Back – Casters

COM 0.5 yd
0.5 yd COM per single back

MODEL	COM	GR1	GR2	GR3	GR4	GR5	GR6
1402-UB	464	494	504	524	553	575	606

Dimensions (inches)

seat H	18.0	seat W	18.0	arm H	27.0
total H	32.5	total W	24.0	depth	22.0

Exceeds BIFMA Seating Durability Test to 500 lbs



1402-UB
With arms
19 lbs

URBAN Public Seating - POLY SEAT & UPHOLSTERED BACK

Stools

Standard Features

- 0.875" frame
- DuraSpec Poly seat and Upholstered back
- DuraSpec Poly seat available in Black or Sterling Grey
- Frame in any Spectone color
- Ships 1/carton 17 cu ft

Contact Spec Customer Service to railroad fabrics (specify repeat info and yardage requirement will be provided) and for repeats greater than 5" x 5"

Options

- Specify back panel in Black RAL 9005, Light Grey RAL 7037 or White RAL 9016
- Polyurethane arms available in Black (B) or Sterling Grey (G)
- Antibacterial and antimicrobial fabrics available
- Casters, sled base not available
- Other glides may be available for an upcharge - call Customer Service to inquire



Urban, DuraSpec Poly Seat & Upholstered Back – Stools

COM 0.5 yd
0.5 yd COM per single back

MODEL	COM	GR1	GR2	GR3	GR4	GR5	GR6
1421-UB	457	487	496	516	546	568	599
1425-UB	457	487	496	516	546	568	599

Dimensions (inches)

	seat H	28.0	seat W	18.0	arm H	37.0	total H	43.5
depth	22.0	total W	24.0	total W (no arms)	20.1			

Exceeds BIFMA Seating Durability Test to 500 lbs



Urban, DuraSpec Poly Seat & Upholstered Back – Midsize Stools

COM 0.75 yd
0.75 yd COM per single back

MODEL	COM	GR1	GR2	GR3	GR4	GR5	GR6
1424-UB	596	654	674	713	774	818	880
1426-UB	596	654	674	713	774	818	880

Dimensions (inches)

	seat H	28.0	seat W	22.0	arm H	37.0	total H	43.5
depth	22.0	total W	27.8	total W (no arms)	24.0			

Exceeds BIFMA Seating Durability Test to 500 lbs



URBAN Public Seating - POLY SEAT & UPHOLSTERED BACK

Easy Access Hip Single Seater

Standard Features

- 0.875" frame
- DuraSpec Poly seat and Upholstered back
- DuraSpec Poly seat available in Black or Sterling Grey
- Frame in any Spectone color
- Ships 1/carton 19 cu ft

Contact Spec Customer Service to railroad fabrics (specify repeat info and yardage requirement will be provided) and for repeats greater than 5" x 5"

Options

- Specify back panel in Black RAL 9005, Light Grey RAL 7037 or White RAL 9016
- Polyurethane arms available in Black (B) or Sterling Grey (G)
- Antibacterial and antimicrobial fabrics available
- Casters, sled base not available
- Other glides may be available for an upcharge - call Customer Service to inquire



Urban, DuraSpec Poly Seat & Upholstered Back – Easy Access Hip Single Seater

COM 0.5 yd
0.5 yd COM per single back

MODEL	COM	GR1	GR2	GR3	GR4	GR5	GR6
1421E-UB	491	520	531	550	580	602	632

Dimensions (inches)

seat H	24.0	seat W	18.0	arm H	33.0
total H	38.5	total W	24.0	depth	32.0

Exceeds BIFMA Seating Durability Test to 500 lbs



1421E-UB
With arms
31 lbs

Urban, DuraSpec Poly Seat & Upholstered Back – Midsize Easy Access Hip Single Seater

COM 0.75 yd
0.75 yd COM per single back

MODEL	COM	GR1	GR2	GR3	GR4	GR5	GR6
1424E-UB	630	688	708	749	808	854	914

Dimensions (inches)

seat H	24.0	seat W	22.0	arm H	33.0
total H	38.5	total W	27.8	depth	32.0

Exceeds BIFMA Seating Durability Test to 500 lbs



1424E-UB
With arms
33 lbs



URBAN Public Seating - DOLLY

Standard Features

- Black finish only
- 2" black swivel casters
- Urban Dolly (Black finish only) stacks 18"w Four-point Urbans up to 10 high, and 22"w Four-point Urbans up to 4 high
- Ships 1/carton 17 cu ft

Options

- Please specify if Dolly is for chairs with wall-saving frame



Urban – Dolly

DESCRIPTION	MODEL	PRICE
Standard	1499	335
Midsized 22"	1499M	485

Dimensions (inches)

Standard		Midsized	
height	36.5	height	36.5
width	21.0	width	23.0
depth	31.0	depth	42.0



1499
Standard
18 lbs

URBAN Public Seating - CONNECTED

To order connected Urban Chairs

- Select and price the Urban chair required for your configuration
- Select and price the corner, spacer and end tables required
- Add Urban connecting bars (between chairs only). Do not add connecting bars for tables (they are part of the table)
- Send a drawing with your order or call Spec for assistance

Urban Tables

- Table top is 3/4" thick
- Self Edge, PVC Flat and 2mm edge available. PVC Flat edge and 2 mm Bio edge available in 38 solid colors. 2mm PVC edge available in wood grain to match 9 standard stains.
- Select laminate tops from 15 standard laminates or choose any standard Wilsonart, Nevamar, Formica, Arborite and Pionite matte finish laminates at no upcharge.

Connecting bars and tables can be retrofitted, allowing you to change configurations later or create new configurations from your present Urban chairs.






Connecting bars can be added to any Urban chair.

Connecting bars and table frame bars are finished in the same color as the color of the chair frames.

Connecting bars are fastened to the underside of the Urban chair frame at the front and back.



Urban – Connecting Tables

					
DESCRIPTION	Corner Table	Spacer Table	Mini Spacer Table	End Table*	Connecting Bars
MODEL	14RC	14ST	14MT	14ET	14CON
DIMENSIONS (inches)	25 x 25	17 x 17	4.5 x 14.5	17 x 17	N/A
PRICE	347	238	130	244	83

*End table is handed, provide layout