



# URBAN Public Seating



## PRODUCT CODE

**14 01 US**

**Series**

14 : Urban

**Chair Type**

- 01 : Four Point/Arms
- 11 : Four Point/No Arms
- 31 : Sled Base/Arms
- 41 : Sled Base/No Arms
- 02 : Casters/Arms
- 21 : Stool/Arms
- 25 : Stool/No Arms
- 21E : Hip Chair

**Upholstery**

- N/A : DuraSpec Seat/Plastic Back
- US : Upholstered Seat/Plastic back
- UB : DuraSpec Seat/Upholstered Back
- UP : Fully Upholstered



## OPTIONS

**SEAT**



DuraSpec

Upholstered

**BACK**



Plastic

Upholstered

**5** Wood  
9 standard stains or stain to match

**WALL-SAVING**



## FINISHES

**PLASTIC BACK**



Black

Light Grey

White

**PLASTIC BACK COVER**



Black

Light Grey

White

**DURASPEC SEAT**



Black

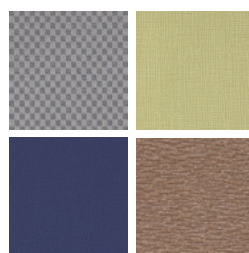
Sterling Grey

**FRAME**



Select from one of our 76 standard Spectone colors

**FABRIC**



Select fabrics from one of our textile partners

**ARMS**



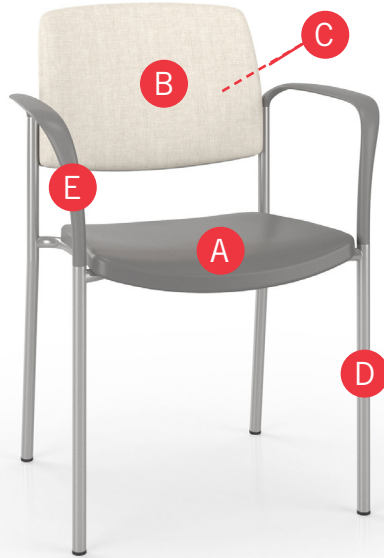
Black

Sterling Grey



# URBAN Public Seating - POLY SEAT & UPHOLSTERED BACK

## HOW TO ORDER



### Specify Model

- A** Specify Seat Type and Color  
*For DuraSpec Seat: Color*
- B** Specify Back Type and Color  
*For Upholstered Back: Fabric Manufacturer, Pattern Name, Color*
- C** Specify Back Panel Color
- D** Specify Frame Finish
- E** Specify Polyurethane Arm Color

Optional: CAL 133, Moisture Barrier, Wall-saving Frame, Connecting Bars, Connecting Tables, Dolly



Model	Seat Type and Color	Back Type and Color	Back Panel Color	Frame Finish	Polyurethane Arm Color
1401-UB	DuraSpec, Sterling Grey	Momentum, Beeline, Canvas	White (not shown)	Silver	Sterling Grey

# URBAN Public Seating - POLY SEAT & UPHOLSTERED BACK

Four-point and Sled Base

## Standard Features

- 0.875" frame
- DuraSpec Poly seat and Upholstered back
- DuraSpec Poly seat available in Black or Sterling Grey
- Frame in any Spectone color
- Four-point stacks up to 8 high with dolly.
- Sled Base does not stack and ships 1 per carton
- Ships 1/carton 11 cu ft, 2-4/carton 22 cu ft

Contact Spec Customer Service to railroad fabrics (specify repeat info and yardage requirement will be provided) and for repeats greater than 5" x 5"

## Options

- Wall-saving frame on Four-point only, add \$22 List,
- Specify back panel in Black RAL 9005, Light Grey RAL 7037 or White RAL 9016
- Polyurethane arms available in Black (B) or Sterling Grey (G)
- Connecting bars for a structured reconfigurable layout, add \$85 List
- Antibacterial and antimicrobial fabrics available
- Other glides may be available for an upcharge - call Customer Service to inquire



## Urban, DuraSpec Poly Seat & Upholstered Back – Four-point

COM 0.5 yd  
0.5 yd COM per single back

MODEL	COM	GR 1	GR 2	GR 3	GR 4	GR 5	GR 6
1401-UB	394	424	434	453	484	504	536
1411-UB	394	424	434	453	484	504	536

Dimensions (inches)

	seat H	18.0	seat W	18.0	arm H	27.0	total H	32.5
depth	22.0	total W	24.0	total W (no arms)	20.1			

Exceeds BIFMA Seating Durability Test to 500 lbs



## Urban, DuraSpec Poly Seat & Upholstered Back – Sled Base

COM 0.5 yd  
0.5 yd COM per single back

MODEL	COM	GR 1	GR 2	GR 3	GR 4	GR 5	GR 6
1431-UB	497	527	537	556	586	607	639
1441-UB	497	527	537	556	586	607	639

Dimensions (inches)

	seat H	18.0	seat W	18.0	arm H	27.0	total H	32.5
depth	22.0	total W	24.0	total W (no arms)	20.1			

Exceeds BIFMA Seating Durability Test to 500 lb



# URBAN Public Seating - POLY SEAT & UPHOLSTERED BACK

Midsize – Four-point and Sled Base

## Standard Features

- 0.875" frame
- DuraSpec Poly seat and Upholstered back
- DuraSpec Poly seat available in Black or Sterling Grey
- Frame in any Spectone color
- Four-point stacks up to 4 high with dolly.
- Sled Base does not stack and ships 1 per carton
- Ships 1-3/carton 21.24 cu ft

Contact Spec Customer Service to railroad fabrics (specify repeat info and yardage requirement will be provided) and for repeats greater than 5" x 5"

## Options

- Wall-saving frame on Four-point only, add \$22 List.
- Specify back panel in Black RAL 9005, Light Grey RAL 7037 or White RAL 9016
- Polyurethane arms available in Black (B) or Sterling Grey (G)
- Connecting bars for a structured reconfigurable layout, add \$85 List
- Antibacterial and antimicrobial fabrics available
- Other glides may be available for an upcharge - call Customer Service to inquire



## Urban, DuraSpec Poly Seat & Upholstered Back – Midsize – Four-point

COM 0.75 yd  
0.75 yd COM per single back

MODEL	COM	GR 1	GR 2	GR 3	GR 4	GR 5	GR 6
<b>1404-UB</b>	<b>556</b>	<b>614</b>	<b>633</b>	<b>673</b>	<b>731</b>	<b>777</b>	<b>836</b>
<b>1414-UB</b>	<b>556</b>	<b>614</b>	<b>633</b>	<b>673</b>	<b>731</b>	<b>777</b>	<b>836</b>

Dimensions (inches)

	seat H	18.0	seat W	22.0	arm H	27.0	total H	32.5
depth	22.0	total W	27.8	total W (no arms)	24.0			

Exceeds BIFMA Seating Durability Test to 500 lbs



## Urban, DuraSpec Poly Seat & Upholstered Back – Midsize – Sled Base

COM 0.75 yd  
0.75 yd COM per single back

MODEL	COM	GR 1	GR 2	GR 3	GR 4	GR 5	GR 6
<b>1434-UB</b>	<b>658</b>	<b>717</b>	<b>736</b>	<b>776</b>	<b>834</b>	<b>880</b>	<b>939</b>
<b>1444-UB</b>	<b>658</b>	<b>717</b>	<b>736</b>	<b>776</b>	<b>834</b>	<b>880</b>	<b>939</b>

Dimensions (inches)

	seat H	18.0	seat W	22.0	arm H	27.0	total H	32.5
depth	22.0	total W	27.8	total W (no arms)	24.0			

Exceeds BIFMA Seating Durability Test to 500 lbs





# URBAN Public Seating - POLY SEAT & UPHOLSTERED BACK

Casters

## Standard Features

- 0.875" frame
- DuraSpec Poly seat and Upholstered back
- DuraSpec Poly seat available in Black or Sterling Grey
- Frame in any Spectone color
- Four-point stacks up to 8 high with dolly.
- Ships 1/carton 11 cu ft, 2-4/carton 22 cu ft

## Options

- Specify back panel in Black RAL 9005, Light Grey RAL 7037 or White RAL 9016
- Polyurethane arms available in Black (B) or Sterling Grey (G)
- Antibacterial and antimicrobial fabrics available
- Armless and sled base versions not available

Contact Spec Customer Service to railroad fabrics (specify repeat info and yardage requirement will be provided) and for repeats greater than 5" x 5"



Upholstered Back & Plastic Back Panel



## Urban, DuraSpec Poly Seat & Upholstered Back – Casters

COM 0.5 yd  
0.5 yd COM per single back

MODEL	COM	GR1	GR2	GR3	GR4	GR5	GR6
<b>1402-UB</b>	<b>537</b>	<b>566</b>	<b>576</b>	<b>596</b>	<b>624</b>	<b>647</b>	<b>677</b>

Dimensions (inches)

seat H	18.0	seat W	18.0	arm H	27.0
total H	32.5	total W	24.0	depth	22.0

Exceeds BIFMA Seating Durability Test to 500 lbs



**1402-UB**  
**With arms**  
19 lbs



# URBAN Public Seating - POLY SEAT & UPHOLSTERED BACK

## Stools

### Standard Features

- 0.875" frame
- DuraSpec Poly seat and Upholstered back
- DuraSpec Poly seat available in Black or Sterling Grey
- Frame in any Spectone color
- Ships 1/carton 17 cu ft

Contact Spec Customer Service to railroad fabrics (specify repeat info and yardage requirement will be provided) and for repeats greater than 5" x 5"

### Options

- Specify back panel in Black RAL 9005, Light Grey RAL 7037 or White RAL 9016
- Polyurethane arms available in Black (B) or Sterling Grey (G)
- Antibacterial and antimicrobial fabrics available
- Casters, sled base not available
- Other glides may be available for an upcharge - call Customer Service to inquire



### Urban, DuraSpec Poly Seat & Upholstered Back – Stools

COM 0.5 yd  
0.5 yd COM per single back

MODEL	COM	GR1	GR2	GR3	GR4	GR5	GR6
<b>1421-UB</b>	<b>526</b>	<b>555</b>	<b>565</b>	<b>584</b>	<b>614</b>	<b>636</b>	<b>667</b>
<b>1425-UB</b>	<b>526</b>	<b>555</b>	<b>565</b>	<b>584</b>	<b>614</b>	<b>636</b>	<b>667</b>

Dimensions (inches)

seat H	28.0	seat W	18.0	arm H	37.0	total H	43.5
depth	22.0	total W	24.0	total W (no arms)	20.1		

Exceeds BIFMA Seating Durability Test to 500 lbs



### Urban, DuraSpec Poly Seat & Upholstered Back – Midsize Stools

COM 0.75 yd  
0.75 yd COM per single back

MODEL	COM	GR1	GR2	GR3	GR4	GR5	GR6
<b>1424-UB</b>	<b>686</b>	<b>745</b>	<b>763</b>	<b>804</b>	<b>862</b>	<b>907</b>	<b>967</b>
<b>1426-UB</b>	<b>686</b>	<b>745</b>	<b>763</b>	<b>804</b>	<b>862</b>	<b>907</b>	<b>967</b>

Dimensions (inches)

seat H	28.0	seat W	22.0	arm H	37.0	total H	43.5
depth	22.0	total W	27.8	total W (no arms)	24.0		

Exceeds BIFMA Seating Durability Test to 500 lbs





# URBAN Public Seating - POLY SEAT & UPHOLSTERED BACK

Easy Access Hip Single Seater

## Standard Features

- 0.875" frame
- DuraSpec Poly seat and Upholstered back
- DuraSpec Poly seat available in Black or Sterling Grey
- Frame in any Spectone color
- Ships 1/carton 19 cu ft

Contact Spec Customer Service to railroad fabrics (specify repeat info and yardage requirement will be provided) and for repeats greater than 5" x 5"

## Options

- Specify back panel in Black RAL 9005, Light Grey RAL 7037 or White RAL 9016
- Polyurethane arms available in Black (B) or Sterling Grey (G)
- Antibacterial and antimicrobial fabrics available
- Casters, sled base not available
- Other glides may be available for an upcharge - call Customer Service to inquire



Upholstered Back & Plastic Back Panel



## Urban, DuraSpec Poly Seat & Upholstered Back – Easy Access Hip Single Seater

COM 0.5 yd  
0.5 yd COM per single back

MODEL	COM	GR1	GR2	GR3	GR4	GR5	GR6
<b>1421E-UB</b>	<b>570</b>	<b>600</b>	<b>609</b>	<b>630</b>	<b>658</b>	<b>680</b>	<b>711</b>

Dimensions (inches)

seat H	24.0	seat W	18.0	arm H	33.0
total H	38.5	total W	24.0	depth	32.0

Exceeds BIFMA Seating Durability Test to 500 lbs



**1421E-UB**  
With arms  
31 lbs

## Urban, DuraSpec Poly Seat & Upholstered Back – Midsize Easy Access Hip Single Seater

COM 0.75 yd  
0.75 yd COM per single back

MODEL	COM	GR1	GR2	GR3	GR4	GR5	GR6
<b>1424E-UB</b>	<b>731</b>	<b>789</b>	<b>809</b>	<b>849</b>	<b>907</b>	<b>953</b>	<b>1012</b>

Dimensions (inches)

seat H	24.0	seat W	22.0	arm H	33.0
total H	38.5	total W	27.8	depth	32.0

Exceeds BIFMA Seating Durability Test to 500 lbs



**1424E-UB**  
With arms  
33 lbs



# URBAN Public Seating - DOLLY

## Standard Features

- Black finish only
- 2" black swivel casters
- Standard Dolly stacks 8 chairs
- Ships 1/carton 17 cu ft

## Options

- Please specify if Dolly is for chairs with wall-saving frame



## Urban – Dolly

DESCRIPTION	MODEL	PRICE
<b>Standard</b>	<b>1499</b>	<b>367</b>
<b>Midsized 22"</b>	<b>1499M</b>	<b>526</b>

### Dimensions (inches)

<b>Standard</b>		<b>Midsized</b>	
height	36.5	height	36.5
width	21.0	width	23.0
depth	31.0	depth	42.0



**1499**  
**Standard**  
18 lbs



# URBAN Public Seating - CONNECTED

## To order connected Urban Chairs

- Select and price the Urban chair required for your configuration
- Select and price the corner, spacer and end tables required
- Add Urban connecting bars (between chairs only). Do not add connecting bars for tables (they are part of the table)
- Send a drawing with your order or call Spec for assistance

## Urban Tables

- Table top is 3/4" thick
- Self Edge, PVC Flat and 2mm edge available. PVC Flat edge and 2 mm Bio edge available in 38 solid colors. 2mm PVC edge available in wood grain to match 9 standard stains.
- Select laminate tops from 15 standard laminates or choose any standard Wilsonart, Nevamar, Formica, Arborite and Pionite matte finish laminates at no upcharge.

*Connecting bars and tables can be retrofitted, allowing you to change configurations later or create new configurations from your present Urban chairs.*






*Connecting bars can be added to any Urban chair,*

*Connecting bars and table frame bars are finished in the same color as the color of the chair frames*

*Connecting bars are fastened to the underside of the Urban chair frame at the front and back*



## Urban – Connecting Tables

					
DESCRIPTION	<b>Corner Table</b>	<b>Spacer Table</b>	<b>Mini Spacer Table</b>	<b>End Table*</b>	<b>Connecting Bars</b>
MODEL	14RC	14ST	14MT	14ET	14CON
DIMENSIONS (inches)	25 x 25	17 x 17	4.5 x 14.5	17 x 17	N/A
PRICE	<b>354</b>	<b>242</b>	<b>145</b>	<b>252</b>	<b>85</b>
				*End table is handed, provide layout	