



Pricing March 1, 2020
Discount 57.7% from List prices



MAS SIN 33721

URBAN Public Seating



PRODUCT CODE

14 01 US

Series

14 : Urban

Chair Type

01 : Four Point/Arms 21 : Stool/Arms
11 : Four Point/No Arms 25 : Stool/No Arms
31 : Sled Base/Arms 21E : Hip Chair
41 : Sled Base/No Arms
02 : Casters/Arms

Upholstery

N/A : DuraSpec Seat/Plastic Back
US : Upholstered Seat/Plastic back
UB : DuraSpec Seat/Upholstered Back
UP : Fully Upholstered



OPTIONS

SEAT



DuraSpec

Upholstered

BACK



Plastic

Upholstered

S Wood
9 standard stains or
stain to match

WALL-SAVING



FINISHES

PLASTIC BACK



Black

Light Grey

White

PLASTIC BACK COVER



Black

Light Grey

White

DURASPEC SEAT



Black

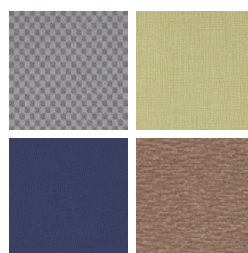
Sterling Grey

FRAME



Select from one of our 76 standard Spectone colors

FABRIC



Select fabrics from one of our
textile partners

ARMS



Black

Sterling Grey

Toll Free: 1-888-761-7732



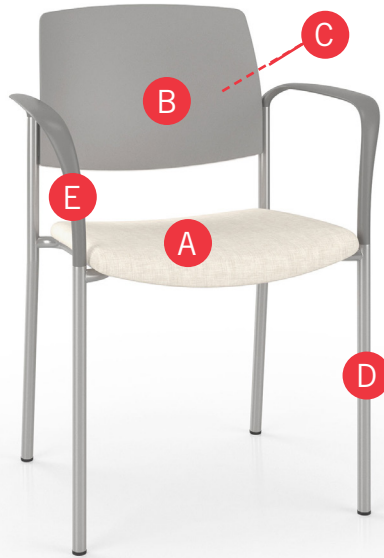
Pricing March 1, 2020
Discount 57.7% from List prices



MAS SIN 33721

URBAN Public Seating - UPHOLSTERED SEAT & PLASTIC BACK

HOW TO ORDER



Specify Model

- A** Specify Seat Type and Color
For Upholstered Seat: Fabric Manufacturer, Pattern Name, Color
- B** Specify Back Type and Color
For Plastic Back: Color
For Wood Back: Wood Stain
- C** Specify Back Panel Color
- D** Specify Frame Finish
- E** Specify Polyurethane Arm Color

Optional: Wood Back, Custom Wood Back Design, Moisture Barrier, Wall-saving Frame, Connecting Bars, Connecting Tables, Dolly



Model	Seat Type and Color	Back Type and Color	Back Panel Color	Frame Finish	Polyurethane Arm Color
1401-US	Momentum, Beeline, Canvas	Plastic, Light Grey	White (not shown)	Silver	Sterling Grey



URBAN Public Seating - UPHOLSTERED SEAT & PLASTIC BACK

Four-point and Sled Base

Standard Features

- 0.875" frame
- Upholstered seat and plastic back
- Frame in any Spectone color
- Four-point stacks up to 8 high with dolly.
- Sled Base does not stack and ships 1 per carton
- Ships 1/carton 11 cu ft, 2-4/carton 22 cu ft

Contact Spec Customer Service to railroad fabrics (specify repeat info and yardage requirement will be provided) and for repeats greater than 5" x 5"

Options

- Wall-saving frame on Four-point only, add \$22 List
- Specify back in Black RAL 9005, Light Grey RAL 7037 or White RAL 9016
- Specify back panel in Black RAL 9005, Light Grey RAL 7037 or White RAL 9016
- Polyurethane arms available in Black (B) or Sterling Grey (G)
- For Wood Back, specify and add \$94 List
- Connecting bars for a structured reconfigurable layout, add \$85 List
- Antibacterial and antimicrobial fabrics available
- Other glides may be available for an upcharge - call Customer Service to inquire



Plastic Back & Back Panel



Optional Wood Back & Plastic Back Panel



Optional Wall-saving Frame

Urban, Upholstered Seat & Plastic Back – Four-point

COM 0.5 yd
0.5 yd COM per single seat

MODEL	COM	GR1	GR2	GR3	GR4	GR5	GR6
1401-US	407	437	447	467	496	517	548
1411-US	407	437	447	467	496	517	548

Dimensions (inches)

	seat H	18.0	seat W	18.0	arm H	27.0	total H	32.5
depth	22.0		total W	24.0	total W (no arms)	20.1		

Exceeds BIFMA Seating Durability Test to 500 lbs
1" extra seat foam, specify and add \$15 List



1401-US
With arms
19 lbs



1411-US
Without arms
18 lbs

Urban, Upholstered Seat & Plastic Back – Sled Base

COM 0.5 yd
0.5 yd COM per single seat

MODEL	COM	GR1	GR2	GR3	GR4	GR5	GR6
1431-US	510	540	549	569	599	620	651
1441-US	510	540	549	569	599	620	651

Dimensions (inches)

	seat H	18.0	seat W	18.0	arm H	27.0	total H	32.5
depth	22.0		total W	24.0	total W (no arms)	20.1		

Exceeds BIFMA Seating Durability Test to 500 lb
1" extra seat foam, specify and add \$15 List



1431-US
With arms
20 lbs



1441-US
Without arms
19 lbs



Pricing March 1, 2020
Discount 57.7% from List prices



MAS SIN 33721

URBAN Public Seating - UPHOLSTERED SEAT & PLASTIC BACK

Midsize – Four-point and Sled Base

Standard Features

- 0.875" frame
- Upholstered seat and plastic back
- Frame in any Spectone color
- Four-point stacks up to 4 high with dolly.
- Sled Base does not stack and ships 1 per carton
- Ships 1-3/carton 21.24 cu ft

Contact Spec Customer Service to railroad fabrics (specify repeat info and yardage requirement will be provided) and for repeats greater than 5" x 5"

Options

- Wall-saving frame on Four-point only, add \$22 List
- Specify back in Black RAL 9005, Light Grey RAL 7037 or White RAL 9016
- Specify back panel in Black RAL 9005, Light Grey RAL 7037 or White RAL 9016
- Polyurethane arms available in Black (B) or Sterling Grey (G)
- For Wood Back, specify and add \$94 List
- Connecting bars for a structured reconfigurable layout, add \$85 List
- Antibacterial and antimicrobial fabrics available
- Other glides may be available for an upcharge - call Customer Service to inquire



Plastic Back & Back Panel



Optional Wood Back & Plastic Back Panel



Optional Wall-saving Frame

Urban, Upholstered Seat & Plastic Back – Midsize – Four-point

COM 0.75 yd
0.75 yd COM per single seat

MODEL	COM	GR1	GR2	GR3	GR4	GR5	GR6
1404-US	516	563	578	609	656	693	742
1414-US	516	563	578	609	656	693	742

Dimensions (inches)

	seat H	18.0	seat W	22.0	arm H	27.0	total H	32.5
depth	22.0	total W	27.8	total W (no arms)	24.0			

Exceeds BIFMA Seating Durability Test to 500 lbs
1" extra seat foam, specify and add \$23 List



1404-US
With arms
22 lbs



1414-US
Without arms
21 lbs

Urban, Upholstered Seat & Plastic Back – Midsize – Sled Base

COM 0.75 yd
0.75 yd COM per single seat

MODEL	COM	GR1	GR2	GR3	GR4	GR5	GR6
1434-US	619	666	681	712	759	796	844
1444-US	619	666	681	712	759	796	844

Dimensions (inches)

	seat H	18.0	seat W	22.0	arm H	27.0	total H	32.5
depth	22.0	total W	27.8	total W (no arms)	24.0			

Exceeds BIFMA Seating Durability Test to 500 lbs
1" extra seat foam, specify and add \$23 List



1434-US
With arms
23 lbs



1444-US
Without arms
22 lbs



Pricing March 1, 2020
Discount 57.7% from List prices



MAS SIN 33721

URBAN Public Seating - UPHOLSTERED SEAT & PLASTIC BACK

Casters

Standard Features

- 0.875" frame
- Upholstered seat and plastic back
- Frame in any Spectone color
- Four-point stacks up to 8 high with dolly.
- Ships 1/carton 11 cu ft, 2-4/carton 22 cu ft

Contact Spec Customer Service to railroad fabrics (specify repeat info and yardage requirement will be provided) and for repeats greater than 5" x 5"

Options

- Specify back in Black RAL 9005, Light Grey RAL 7037 or White RAL 9016
- Specify back panel in Black RAL 9005, Light Grey RAL 7037 or White RAL 9016
- Polyurethane arms available in Black (B) or Sterling Grey (G)
- For Wood Back, specify and add \$94 List
- Antibacterial and antimicrobial fabrics available
- Armless and sled base versions not available



Plastic Back & Plastic Back Panel



Optional Wood Back & Plastic Back Panel



Urban, Upholstered Seat & Plastic Back – Casters

COM 0.5 yd
0.5 yd COM per single seat

MODEL	COM	GR1	GR2	GR3	GR4	GR5	GR6
1402-US	549	579	590	608	639	659	691

Dimensions (inches)

seat H	18.0	seat W	18.0	arm H	27.0
total H	32.5	total W	24.0	depth	22.0

Exceeds BIFMA Seating Durability Test to 500 lbs
1" extra seat foam, specify and add \$15 List



1402-US
With arms
19 lbs



URBAN Public Seating - UPHOLSTERED SEAT & PLASTIC BACK

Stools

Standard Features

- 0.875" frame
- Upholstered seat and plastic back
- Frame in any Spectone color
- Ships 1/carton 17 cu ft

Contact Spec Customer Service to railroad fabrics (specify repeat info and yardage requirement will be provided) and for repeats greater than 5" x 5"

Options

- Specify back in Black RAL 9005, Light Grey RAL 7037 or White RAL 9016
- Specify back panel in Black RAL 9005, Light Grey RAL 7037 or White RAL 9016
- Polyurethane arms available in Black (B) or Sterling Grey (G)
- For Wood Back, specify and add \$94 List
- Antibacterial and antimicrobial fabrics available
- Casters, sled base not available
- Other glides may be available for an upcharge - call Customer Service to inquire



Plastic Back & Plastic Back Panel



Optional Wood Back & Plastic Back Panel

Urban, Upholstered Seat & Plastic Back – Stools

COM 0.5 yd
0.5 yd COM per single seat

MODEL	COM	GR1	GR2	GR3	GR4	GR5	GR6
1421-US	539	568	578	598	627	649	679
1425-US	539	568	578	598	627	649	679

Dimensions (inches)

seat H	28.0	seat W	18.0	arm H	37.0	total H	43.5
depth	22.0	total W	24.0	total W (no arms)	20.1		

Exceeds BIFMA Seating Durability Test to 500 lbs
1" extra seat foam, specify and add \$15 List



1421-US
With arms
25 lbs



1425-US
Without arms
24 lbs

Urban, Upholstered Seat & Plastic Back – Midsize Stools

COM 0.75 yd
0.75 yd COM per single seat

MODEL	COM	GR1	GR2	GR3	GR4	GR5	GR6
1424-US	647	693	709	740	787	824	872
1426-US	647	693	709	740	787	824	872

Dimensions (inches)

seat H	28.0	seat W	22.0	arm H	37.0	total H	43.5
depth	22.0	total W	27.8	total W (no arms)	24.0		

Exceeds BIFMA Seating Durability Test to 500 lbs
1" extra seat foam, specify and add \$23 List



1424-US
With arms
27 lbs



1426-US
Without arms
26 lbs



Pricing March 1, 2020
Discount 57.7% from List prices



MAS SIN 33721

URBAN Public Seating - UPHOLSTERED SEAT & PLASTIC BACK

Easy Access Hip Single Seater

Standard Features

- 0.875" frame
- Upholstered seat and plastic back
- Frame in any Spectone color
- Ships 1/carton 19 cu ft

Contact Spec Customer Service to railroad fabrics (specify repeat info and yardage requirement will be provided) and for repeats greater than 5" x 5"

Options

- Specify back in Black RAL 9005, Light Grey RAL 7037 or White RAL 9016
- Specify back panel in Black RAL 9005, Light Grey RAL 7037 or White RAL 9016
- Polyurethane arms available in Black (B) or Sterling Grey (G)
- For Wood Back, specify and add \$94 List
- Antibacterial and antimicrobial fabrics available
- Casters, sled base not available
- Other glides may be available for an upcharge - call Customer Service to inquire



Plastic Back
& Plastic Back Panel



Optional Wood Back
& Plastic Back Panel



Urban, Upholstered Seat & Plastic Back – Easy Access Hip Single Seater

COM 0.5 yd
0.5 yd COM per single seat

MODEL	COM	GR1	GR2	GR3	GR4	GR5	GR6
1421E-US	583	613	622	643	672	694	724

Dimensions (inches)

seat H	24.0	seat W	18.0	arm H	33.0
total H	38.5	total W	24.0	depth	32.0

Exceeds BIFMA Seating Durability Test to 500 lbs
1" extra seat foam, specify and add \$15 List



1421E-US
With arms
31 lbs

Urban, Upholstered Seat & Plastic Back – Midsize Easy Access Hip Single Seater

COM 0.75 yd
0.75 yd COM per single seat

MODEL	COM	GR1	GR2	GR3	GR4	GR5	GR6
1424E-US	692	738	754	785	832	868	917

Dimensions (inches)

seat H	24.0	seat W	22.0	arm H	33.0
total H	38.5	total W	27.8	depth	32.0

Exceeds BIFMA Seating Durability Test to 500 lbs
1" extra seat foam, specify and add \$23 List



1424E-US
With arms
33 lbs



Pricing March 1, 2020
Discount 57.7% from List prices



MAS SIN 33721

URBAN Public Seating - WOOD BACK

Seat Back Designs

- Backs standard in Natural maple in any of 9 standard stains or stain-to-match at no upcharge

Custom Seat Back Cut-out

- A one time set up charge of \$279 list applies
- Design should fit within a 5" x 5" space (due to contour of back)
- Shape will be mirrored from the front of the chair

Pick a back design and add the name of the cutout following the model number, e.g. 1401Cityscape

Custom Seat Back Engraving and Vinyl Decals

- For quantities over 25, add an upcharge of \$57 List/chair
- For quantities under 25, add an upcharge of \$57 List/chair, plus a \$279 List set up fee **per order**

Engraving: Please note that inconsistencies in the wood may show after the engraving is completed. When choosing the raw wood, we take extra care to select backs that are similar in graining and color, however, no guarantee can be made. We recommend that an engraved image be stained a darker color to hide possible inconsistencies.

Urban – Wood Back Designs



Skyscraper



Cityscape



City Block

Custom Seat Back Cut-out



Custom Seat Back Engraving



Custom Seat Back Vinyl Decals*



* Available up to 4"x4"
Maximum of 4 colors per decal
Vector based files required



Pricing March 1, 2020
Discount 57.7% from List prices



MAS SIN 33721

URBAN Public Seating - DOLLY

Standard Features

- Black finish only
- 2" black swivel casters
- Standard Dolly stacks 8 chairs
- Ships 1/carton 17 cu ft

Options

- Please specify if Dolly is for chairs with wall-saving frame



Urban – Dolly

DESCRIPTION	MODEL	PRICE
Standard	1499	367
Midsized 22"	1499M	526

Dimensions (inches)

Standard		Midsized	
height	36.5	height	36.5
width	21.0	width	23.0
depth	31.0	depth	42.0



1499
Standard
18 lbs



URBAN Public Seating - CONNECTED

To order connected Urban Chairs

- Select and price the Urban chair required for your configuration
- Select and price the corner, spacer and end tables required
- Add Urban connecting bars (between chairs only). Do not add connecting bars for tables (they are part of the table)
- Send a drawing with your order or call Spec for assistance

Connecting bars and tables can be retrofitted, allowing you to change configurations later or create new configurations from your present Urban chairs.

Connecting bars can be added to any Urban chair,

Connecting bars and table frame bars are finished in the same color as the color of the chair frames






Connecting bars are fastened to the underside of the Urban chair frame at the front and back

Urban Tables

- Table top is 3/4" thick
- Self Edge, PVC Flat and 2mm edge available. PVC Flat edge and 2 mm Bio edge available in 38 solid colors. 2mm PVC edge available in wood grain to match 9 standard stains.
- Select laminate tops from 15 standard laminates or choose any standard Wilsonart, Nevamar, Formica, Arborite and Pionite matte finish laminates at no upcharge.



Urban – Connecting Tables

					
DESCRIPTION	Corner Table	Spacer Table	Mini Spacer Table	End Table*	Connecting Bars
MODEL	14RC	14ST	14MT	14ET	14CON
DIMENSIONS (inches)	25 x 25	17 x 17	4.5 x 14.5	17 x 17	N/A
PRICE	354	242	145	252	85
				*End table is handed, provide layout	