



# URBAN Public Seating



## PRODUCT CODE

**14 01 US**

### Series

14 : Urban

### Chair Type

01 : Four Point/Arms      21 : Stool/Arms  
 11 : Four Point/No Arms    25 : Stool/No Arms  
 31 : Sled Base/Arms        21E : Hip Chair  
 41 : Sled Base/No Arms  
 02 : Casters/Arms

### Upholstery

N/A : DuraSpec Seat/Plastic Back  
 US : Upholstered Seat/Plastic back  
 UB : DuraSpec Seat/Upholstered Back  
 UP : Fully Upholstered

## OPTIONS

### SEAT



DuraSpec

Upholstered

### BACK



Plastic

Upholstered

**S** Wood  
 9 standard stains or  
 stain to match

### WALL-SAVING



## FINISHES

### PLASTIC BACK



Black

Light Grey

White

### PLASTIC BACK COVER



Black

Light Grey

White

### DURASPEC SEAT



Black

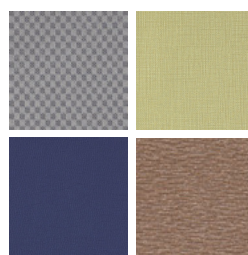
Sterling Grey

### FRAME



Select from one of our 76 standard Spectone colors

### FABRIC



Select fabrics from one of our textile partners

### ARMS



Black

Sterling Grey

# URBAN Public Seating - UPHOLSTERED SEAT & BACK

## HOW TO ORDER



### Specify Model

- A** Specify Seat Type and Color  
*For Upholstered Seat: Fabric Manufacturer, Pattern Name, Color*
- B** Specify Back Type and Color  
*For Upholstered Back: Fabric Manufacturer, Pattern Name, Color*
- C** Specify Back Panel Color
- D** Specify Frame Finish
- E** Specify Polyurethane Arm Color

Optional: CAL 133, Moisture Barrier, Wall-saving Frame, Connecting Bars, Connecting Tables, Dolly

Model	Seat Type and Color	Back Type and Color	Back Panel Color	Frame Finish	Polyurethane Arm Color
1401-UP	Momentum, Beeline, Canvas	Momentum, Beeline, Canvas	White (not shown)	Silver	Sterling Grey



# URBAN Public Seating - UPHOLSTERED SEAT & BACK

Four-point and Sled Base

## Standard Features

- 0.875" frame
- Seat and back upholstered
- Frame in any Spectone color
- Four-point stacks up to 8 high with dolly.
- Sled Base does not stack and ships 1 per carton
- Ships 1/carton 11 cu ft, 2-4/carton 22 cu ft

Contact Spec Customer Service to railroad fabrics (specify repeat info and yardage requirement will be provided) and for repeats greater than 5" x 5"

## Options

- Wall-saving frame on Four-point only, add \$22 List,
- Specify back panel in Black RAL 9005, Light Grey RAL 7037 or White RAL 9016
- Polyurethane arms available in Black (B) or Sterling Grey (G)
- Connecting bars for a structured reconfigurable layout, add \$83 List
- Antibacterial and antimicrobial fabrics available
- Different fabric on seat and back at no upcharge
- CAL 133
- Other glides may be available for an upcharge - call Customer Service to inquire



Upholstered Back & Plastic Back Panel



Optional Wall-saving Frame

## Urban, Upholstered Seat & Back – Four-point

COM 1.0 yd  
0.5 yd COM per single seat  
0.5 yd COM per single back

MODEL	COM	GR1	GR2	GR3	GR4	GR5	GR6
<b>1401-UP</b>	<b>357</b>	<b>416</b>	<b>436</b>	<b>476</b>	<b>536</b>	<b>580</b>	<b>642</b>
<b>1411-UP</b>	<b>357</b>	<b>416</b>	<b>436</b>	<b>476</b>	<b>536</b>	<b>580</b>	<b>642</b>

Dimensions (inches)

	seat H	18.0	seat W	18.0	arm H	27.0	total H	32.5
depth	22.0		total W	24.0	total W (no arms)	20.1		

Exceeds BIFMA Seating Durability Test to 500 lbs  
CAL 133, add \$61 List  
1" extra seat foam, specify and add \$16 List



**1401-UP  
With arms**  
19 lbs



**1411-UP  
Without arms**  
18 lbs

## Urban, Upholstered Seat & Back – Sled Base

COM 1.0 yd  
0.5 yd COM per single seat  
0.5 yd COM per single back

MODEL	COM	GR1	GR2	GR3	GR4	GR5	GR6
<b>1431-UP</b>	<b>434</b>	<b>492</b>	<b>512</b>	<b>551</b>	<b>612</b>	<b>656</b>	<b>718</b>
<b>1441-UP</b>	<b>434</b>	<b>492</b>	<b>512</b>	<b>551</b>	<b>612</b>	<b>656</b>	<b>718</b>

Dimensions (inches)

	seat H	18.0	seat W	18.0	arm H	27.0	total H	32.5
depth	22.0		total W	24.0	total W (no arms)	20.1		

Exceeds BIFMA Seating Durability Test to 500 lbs  
CAL 133, add \$61 List  
1" extra seat foam, specify and add \$16 List



**1431-UP  
With arms**  
20 lbs



**1441-UP  
Without arms**  
19 lbs

# URBAN Public Seating - UPHOLSTERED SEAT & BACK

MidSize – Four-point and Sled Base

## Standard Features

- 0.875" frame
- Seat and back upholstered
- Frame in any Spectone color
- Four-point stacks up to 4 high with dolly.
- Sled Base does not stack and ships 1 per carton
- Ships 1-3/carton 21.24 cu ft

Contact Spec Customer Service to railroad fabrics (specify repeat info and yardage requirement will be provided) and for repeats greater than 5" x 5"

## Options

- Wall-saving frame on Four-point only, add \$22 List.
- Specify back panel in Black RAL 9005, Light Grey RAL 7037 or White RAL 9016
- Polyurethane arms available in Black (B) or Sterling Grey (G)
- Connecting bars for a structured reconfigurable layout, add \$83 List
- Antibacterial and antimicrobial fabrics available
- Different fabric on seat and back at no upcharge
- CAL 133
- Other glides may be available for an upcharge - call Customer Service to inquire



## Urban, Upholstered Seat & Back – Midsize – Four-point

COM 1.5 yd  
0.75 yd COM per single seat  
0.75 yd COM per single back

MODEL	COM	GR1	GR2	GR3	GR4	GR5	GR6
<b>1404-UP</b>	<b>453</b>	<b>558</b>	<b>594</b>	<b>666</b>	<b>773</b>	<b>855</b>	<b>964</b>
<b>1414-UP</b>	<b>453</b>	<b>558</b>	<b>594</b>	<b>666</b>	<b>773</b>	<b>855</b>	<b>964</b>

Dimensions (inches)

	seat H	18.0	seat W	22.0	arm H	27.0	total H	32.5
depth	22.0	total W	27.8	total W (no arms)	24.0			

Exceeds BIFMA Seating Durability Test to 500 lbs  
CAL 133, add \$87 List  
1" extra seat foam, specify and add \$23 List



## Urban, Upholstered Seat & Back – Midsize – Sled Base

COM 1.5 yd  
0.75 yd COM per single seat  
0.75 yd COM per single back

MODEL	COM	GR1	GR2	GR3	GR4	GR5	GR6
<b>1434-UP</b>	<b>529</b>	<b>633</b>	<b>670</b>	<b>740</b>	<b>848</b>	<b>930</b>	<b>1039</b>
<b>1444-UP</b>	<b>529</b>	<b>633</b>	<b>670</b>	<b>740</b>	<b>848</b>	<b>930</b>	<b>1039</b>

Dimensions (inches)

	seat H	18.0	seat W	22.0	arm H	27.0	total H	32.5
depth	22.0	total W	27.8	total W (no arms)	24.0			

Exceeds BIFMA Seating Durability Test to 500 lbs  
CAL 133, add \$87 List  
1" extra seat foam, specify and add \$23 List





# URBAN Public Seating - UPHOLSTERED SEAT & BACK

Casters

## Standard Features

- 0.875" frame
- Upholstered seat and back
- Frame in any Spectone color
- Four-point stacks up to 8 high with dolly.
- Ships 1/carton 11 cu ft, 2-4/carton 22 cu ft

Contact Spec Customer Service to railroad fabrics (specify repeat info and yardage requirement will be provided) and for repeats greater than 5" x 5"

## Options

- Specify back panel in Black RAL 9005, Light Grey RAL 7037 or White RAL 9016
- Polyurethane arms available in Black (B) or Sterling Grey (G)
- Antibacterial and antimicrobial fabrics available
- Different fabric on seat and back at no upcharge
- Armless and sled base versions not available
- CAL 133



Upholstered Back & Plastic Back Panel

---

## Urban, Upholstered Seat & Back – Casters

COM 1.0 yd  
 0.5 yd COM per single seat  
 0.5 yd COM per single back

MODEL	COM	GR1	GR2	GR3	GR4	GR5	GR6
<b>1402-UP</b>	<b>482</b>	<b>540</b>	<b>560</b>	<b>599</b>	<b>658</b>	<b>704</b>	<b>764</b>

Dimensions (inches)

seat H	18.0	seat W	18.0	arm H	27.0
total H	32.5	total W	24.0	depth	22.0

Exceeds BIFMA Seating Durability Test to 500 lbs  
 CAL 133, add \$61 List  
 1" extra seat foam, specify and add \$16 List



**1402-UP**  
**With arms**  
 19 lbs

# URBAN Public Seating - UPHOLSTERED SEAT & BACK

## Stools

### Standard Features

- 0.875" frame
- Upholstered seat and back
- Frame in any Spectone color
- Ships 1/carton 17 cu ft

Contact Spec Customer Service to railroad fabrics (specify repeat info and yardage requirement will be provided) and for repeats greater than 5" x 5"

### Options

- Specify back panel in Black RAL 9005, Light Grey RAL 7037 or White RAL 9016
- Polyurethane arms available in Black (B) or Sterling Grey (G)
- Antibacterial and antimicrobial fabrics available
- Different fabric on seat and back at no upcharge
- Casters, sled base not available
- CAL 133
- Other glides may be available for an upcharge - call Customer Service to inquire



### Urban, Upholstered Seat & Back – Stools

COM 1.0 yd  
0.5 yd COM per single seat  
0.5 yd COM per single back

MODEL	COM	GR1	GR2	GR3	GR4	GR5	GR6
<b>1421-UP</b>	<b>474</b>	<b>532</b>	<b>551</b>	<b>592</b>	<b>651</b>	<b>697</b>	<b>757</b>
<b>1425-UP</b>	<b>474</b>	<b>532</b>	<b>551</b>	<b>592</b>	<b>651</b>	<b>697</b>	<b>757</b>

Dimensions (inches)  
seat H 28.0 seat W 18.0 arm H 37.0 total H 43.5  
depth 22.0 total W 24.0 total W (no arms) 20.1

Exceeds BIFMA Seating Durability Test to 500 lbs  
CAL 133, add \$61 List  
1" extra seat foam, specify and add \$16 List



**1421-UP**  
With arms  
25 lbs



**1425-UP**  
Without arms  
24 lbs

### Urban, Upholstered Seat & Back – Midsize Stools

COM 1.5 yd  
0.75 yd COM per single seat  
0.75 yd COM per single back

MODEL	COM	GR1	GR2	GR3	GR4	GR5	GR6
<b>1424-UP</b>	<b>569</b>	<b>674</b>	<b>709</b>	<b>781</b>	<b>888</b>	<b>970</b>	<b>1080</b>
<b>1426-UP</b>	<b>569</b>	<b>674</b>	<b>709</b>	<b>781</b>	<b>888</b>	<b>970</b>	<b>1080</b>

Dimensions (inches)  
seat H 28.0 seat W 22.0 arm H 37.0 total H 43.5  
depth 22.0 total W 27.8 total W (no arms) 24.0

Exceeds BIFMA Seating Durability Test to 500 lbs  
CAL 133, add \$87 List  
1" extra seat foam, specify and add \$23 List



**1424-UP**  
With arms  
27 lbs



**1426-UP**  
Without arms  
26 lbs

# URBAN Public Seating - UPHOLSTERED SEAT & BACK

## Easy Access Hip Single Seater

### Standard Features

- 0.875" frame
- Upholstered seat and back
- Frame in any Spectone color
- Ships 1/carton 19 cu ft

Contact Spec Customer Service to railroad fabrics (specify repeat info and yardage requirement will be provided) and for repeats greater than 5" x 5"

### Options

- Specify back panel in Black RAL 9005, Light Grey RAL 7037 or White RAL 9016
- Polyurethane arms available in Black (B) or Sterling Grey (G)
- Antibacterial and antimicrobial fabrics available
- Different fabric on seat and back at no upcharge
- Casters, sled base not available
- CAL 133
- Other glides may be available for an upcharge - call Customer Service to inquire



Upholstered Back & Plastic Back Panel

---

## Urban, Upholstered Seat & Back – Easy Access Hip Single Seater

COM 1.0 yd  
0.5 yd COM per single seat  
0.5 yd COM per single back

MODEL	COM	GR1	GR2	GR3	GR4	GR5	GR6
<b>1421E-UP</b>	<b>508</b>	<b>566</b>	<b>587</b>	<b>625</b>	<b>684</b>	<b>730</b>	<b>790</b>

Dimensions (inches)  
seat H 24.0 seat W 18.0 arm H 33.0  
total H 38.5 total W 24.0 depth 32.0

Exceeds BIFMA Seating Durability Test to 500 lbs  
CAL 133, add \$61 List  
1" extra seat foam, specify and add \$16 List



**1421E-UP**  
With arms  
31 lbs

---

## Urban, Upholstered Seat & Back – Midsize Easy Access Hip Single Seater

COM 1.5 yd  
0.75 yd COM per single seat  
0.75 yd COM per single back

MODEL	COM	GR1	GR2	GR3	GR4	GR5	GR6
<b>1424E-UP</b>	<b>603</b>	<b>708</b>	<b>745</b>	<b>815</b>	<b>922</b>	<b>1005</b>	<b>1114</b>

Dimensions (inches)  
seat H 24.0 seat W 22.0 arm H 33.0  
total H 38.5 total W 27.8 depth 32.0

Exceeds BIFMA Seating Durability Test to 500 lbs  
CAL 133, add \$87 List  
1" extra seat foam, specify and add \$23 List



**1424E-UP**  
With arms  
33 lbs



# URBAN Public Seating - DOLLY

## Standard Features

- Black finish only
- 2" black swivel casters
- Urban Dolly (Black finish only) stacks 18"w Four-point Urbans up to 10 high, and 22"w Four-point Urbans up to 4 high
- Ships 1/carton 17 cu ft

## Options

- Please specify if Dolly is for chairs with wall-saving frame



## Urban – Dolly

DESCRIPTION	MODEL	PRICE
<b>Standard</b>	<b>1499</b>	<b>335</b>
<b>Midsized 22"</b>	<b>1499M</b>	<b>485</b>

### Dimensions (inches)

<b>Standard</b>		<b>Midsized</b>	
height	36.5	height	36.5
width	21.0	width	23.0
depth	31.0	depth	42.0



**1499  
Standard**  
18 lbs



# URBAN Public Seating - CONNECTED

## To order connected Urban Chairs

- Select and price the Urban chair required for your configuration
- Select and price the corner, spacer and end tables required
- Add Urban connecting bars (between chairs only). Do not add connecting bars for tables (they are part of the table)
- Send a drawing with your order or call Spec for assistance

## Urban Tables

- Table top is 3/4" thick
- Self Edge, PVC Flat and 2mm edge available. PVC Flat edge and 2 mm Bio edge available in 38 solid colors. 2mm PVC edge available in wood grain to match 9 standard stains.
- Select laminate tops from 15 standard laminates or choose any standard Wilsonart, Nevamar, Formica, Arborite and Pionite matte finish laminates at no upcharge.

*Connecting bars and tables can be retrofitted, allowing you to change configurations later or create new configurations from your present Urban chairs.*






*Connecting bars can be added to any Urban chair.*

*Connecting bars and table frame bars are finished in the same color as the color of the chair frames.*

*Connecting bars are fastened to the underside of the Urban chair frame at the front and back.*



## Urban – Connecting Tables

					
DESCRIPTION	<b>Corner Table</b>	<b>Spacer Table</b>	<b>Mini Spacer Table</b>	<b>End Table*</b>	<b>Connecting Bars</b>
MODEL	14RC	14ST	14MT	14ET	14CON
DIMENSIONS (inches)	25 x 25	17 x 17	4.5 x 14.5	17 x 17	N/A
PRICE	<b>347</b>	<b>238</b>	<b>130</b>	<b>244</b>	<b>83</b>

\*End table is handed, provide layout