



10 DAY QUICKSHIP PROGRAM

10 Day Guarantee

Upon Acceptance and acknowledgement, 10 Day Quickship orders will ship from our factory (165 City View Drive Toronto, On, Canada) within 10 Business Days (excluding any statutory holidays) or the order will be deemed free. The original bill of lading, with your shipment from the Spec™ factory at 165 City View Drive Toronto, On, Canada, shall determine the shipping date.

Spec will endeavor to expedite your shipment upon departure from the factory.

Spec reserves the right to cancel or change the 10 Day Quickship program at any time, and may refuse to acknowledge a 10 Day Quickship order at our discretion.

Credit

All purchase orders are subject to credit approval. For our established dealers, terms are net 30 days from date of invoice. In some instances a deposit may be required to accompany an order. We will advise you if a deposit is required when we acknowledge your order.

Damage and Claim

All products are carefully examined before packaging for shipment. Ownership of your product passes to you upon pick-up by the carrier at our factory. Upon receipt of your order, check for any physical damage to the product (even if the carton is unmarked) that may have occurred during transit. Note any physical damage on all copies of the bill of lading and enter a freight claim with the carrier immediately. If you discover damage while unpacking, arrange for a carrier inspection immediately. Any damage, visible or concealed, must be reported to the carrier within 15 days from delivery. Our customer service people would be pleased to help you in any way during the process.

Cancellations, Returns and Changes

Orders are in process once acknowledged and may not be canceled without our consent. You may be responsible for work in process and administration costs including labor and raw materials. Merchandise may be returned only with our clear written authorization. Freight costs for return are your responsibility. Our product designs, processes, and materials are always under review ensuring the best quality and value to you. We will do our best to notify you as improvements occur.

Ordering Procedures

Please submit all 10 Day Quickship orders in writing via fax or e-mail direct to factory. Orders sent by fax do not require confirmation. Please use model numbers and finish codes with a brief description of the product(s) being ordered. Your order will be acknowledged in writing to you once clarified. We request your assistance in checking our acknowledgement's accuracy to your order to ensure discrepancies do not occur. It is your responsibility to let us know of any discrepancies within 24 hours of receiving the acknowledgement.

Quantity Limit

The 10 Day Shipping Program is available for a selection of tables and chairs to a maximum quantity of 20 pieces per order. If you need more than this quantity on your 10 day shipment, please contact Spec Customer service for approval. We will do our best to accommodate your needs. Spec reserves the right to limit product quantities for 10 Day shipments. The standard Spec shipping program applies to all 10 Day orders. Please refer to the online Shipping Program or contact Customer Service at 1.888.761.7732.

Spec reserves the right to cancel or change the 10 day program at any time and may refuse to acknowledge a 10 day order at our discretion.





Pricing March 1, 2020
Discount 57.7% from List prices

spec™

10 DAY QUICKSHIP PROGRAM FINISHES

CHAIR FRAME / TABLE BASE / TABLE FLAT EDGE



Silver



Black

DURASPEC SEAT / PLASTIC BACK & BACK PANEL



Black

CHAIR ARMS

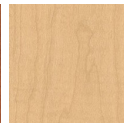


Black

CHAIR WOOD BACK



Wild Cherry



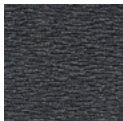
Fusion Maple

TABLE EDGE

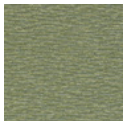


PVC

FABRICS - MOMENTUM



Fuse
Azurean



Fuse
Cress



Fuse
Ginger



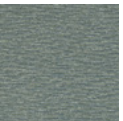
Fuse
Iris



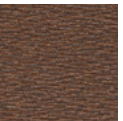
Fuse
Lunar



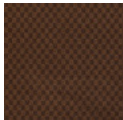
Fuse
Malted



Fuse
Pristine



Fuse
Walnut



Insight
Bark



Insight
Blonde



Insight
Jade



Insight
Midnight



Insight
Pepper



Insight
Periwinkle



Insight
Summit



Insight
Wasabi



Beeline EPU
Canvas



Beeline EPU
Eucalyptus



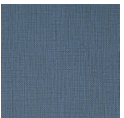
Beeline EPU
Fossil



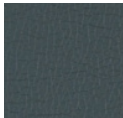
Beeline EPU
Geyser



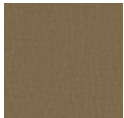
Beeline EPU
Portobello



Beeline EPU
Tidal



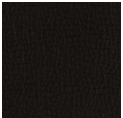
Canter EPU
Ballad



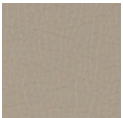
Canter EPU
Earth



Canter EPU
Ink



Canter EPU
Onyx

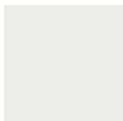


Canter EPU
Quarry

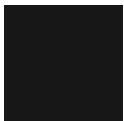


Canter EPU
Toasty

TABLE TOP LAMINATE



Designer
White



Black



Dove Grey



Carbon Mesh



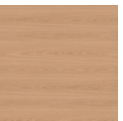
Shadow



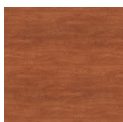
Antique
White



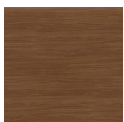
Fusion
Maple



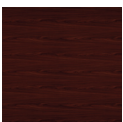
New Age
Oak



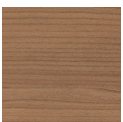
Wild Cherry



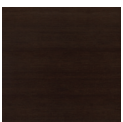
Walnut
Heights



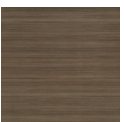
Empire
Mahogany



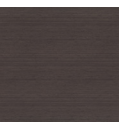
River Cherry



Cafelle



Studio Teak



Asian Night

Toll Free: 1-888-761-7732



Pricing March 1, 2020
Discount 57.7% from List prices

spec

SIN 711-19

10 DAY QUICKSHIP PROGRAM SNOWBALL 1

Standard Features

- Black polyurethane arms
- Black or silver frame finish
- See 10 Day Quickship price list or Spec website for the selection of quick ship textiles
- 10 Day Program quantity limit of 20 chairs per order

For information on the 10 Day Program guarantee and terms and conditions, visit our website and go to 10 Day Quickship, Terms & Conditions tab.

Options

- Snowball Dolly stacks 18"w Four-point Snowballs up to 10 high

Snowball 1

COM 1.0 yd
0.5 yd COM per single seat
0.5 yd COM per single back

MODEL	COM	GR 1	GR 2
1801	333	383	398
1811	333	383	398
1804	381	480	515



1801
With arms
20 lbs



1811
Without arms
19 lbs



1804
With arms
22 lbs

Snowball 1 – Dolly

DESCRIPTION	MODEL	PRICE
Standard	1899	367
22" Midsize	1899M	526

Dimensions (inches)

	Standard	Midsize
height	36.5	height 36.5
width	21.0	width 23.0
depth	31.0	depth 42.0



1899
Standard
18 lbs



1899M
Midsize
24 lbs



Pricing March 1, 2020
Discount 57.7% from List prices

spec

SIN 711-19

10 DAY QUICKSHIP PROGRAM SNOWBALL 2

Standard Features

- Black polyurethane arms
- Back with enhanced contours for superior comfort
- Black or silver frame finish
- See 10 Day Quickship price list or Spec website for the selection of quick ship textiles
- 10 Day Program quantity limit of 20 chairs per order

For information on the 10 Day Program guarantee and terms and conditions, visit our website and go to 10 Day Quickship, Terms & Conditions tab.

Options

- Snowball Dolly stacks regular width four-point Snowballs up to 10 high

Snowball 2

COM 1.0 yd
0.5 yd COM per single seat
0.5 yd COM per single back

MODEL	COM	GR 1	GR 2
1851	354	412	430
1861	354	412	430
1854	414	517	550



1851
With arms
20 lbs



1861
Without arms
19 lbs



1854
With arms
22 lbs

Snowball 2 – Dolly

DESCRIPTION	MODEL	PRICE
Standard	1899	367
22" Midsize	1899M	526

Dimensions (inches)

	Standard	Midsize
height	36.5	height 36.5
width	21.0	width 23.0
depth	31.0	depth 42.0



1899
Standard
18 lbs



1899M
Midsize
24 lbs



Pricing March 1, 2020
Discount 57.7% from List prices

spec

SIN 711-19

10 DAY QUICKSHIP PROGRAM SNOWBALL 3

Standard Features

- Black polyurethane arms
- Upholstered seat and wood back
- Back in Wild Cherry or Fusion Maple stains
- Back cut-out A
- Black or silver frame finish
- See 10 Day Quickship price list or Spec website for the selection of quick ship textiles
- 10 Day Program quantity limit of 20 chairs per order

For information on the 10 Day Program guarantee and terms and conditions, visit our website and go to 10 Day Quickship, Terms & Conditions tab.

Options

- Snowball Dolly stacks regular width four-point Snowballs up to 10 high



Wood Back Design "A"

Snowball 3

COM 0.5 yd
0.5 yd COM per single seat

MODEL	COM	GR 1	GR 2
1901	431	458	467
1911	431	458	467
1904	464	509	524



1901
With arms
18 lbs



1911
Without arms
17 lbs



1904
With arms
20 lbs

Snowball 3 – Dolly

DESCRIPTION	MODEL	PRICE
Standard	1899	367
22" Midsize	1899M	526

Dimensions (inches)

	Standard	Midsize
height	36.5	height 36.5
width	21.0	width 23.0
depth	31.0	depth 42.0



1899
Standard
18 lbs



1899M
Midsize
24 lbs



Pricing March 1, 2020
Discount 57.7% from List prices

spec

SIN 711-19

10 DAY QUICKSHIP PROGRAM

URBAN - DURASPEC SEAT, PLASTIC BACK

Standard Features

- 0.875" frame
- DuraSpec Poly seat and Plastic back
- DuraSpec Poly seat, Plastic back and Back panel available in Black only
- Black or silver frame finish
- 10 Day Program quantity limit of 20 chairs per order

For information on the 10 Day Program guarantee and terms and conditions, visit our website and go to 10 Day Quickship, Terms & Conditions tab.

Options

- Urban Dolly (Black finish only) stacks 18"w Four-point Urbans up to 10 high



Plastic Back
& Plastic Back Panel

Urban, DuraSpec Poly Seat & Plastic Back - Four-point

MODEL	Price
1401	381
1411	381
1404	534

Dimensions (inches)

seat H	18.0	seat W	18.0	arm H	27.0	total H	32.5
depth	22.0	total W	24.0	total W (no arms)	20.1		

Exceeds BIFMA Seating Durability Test to 500 lbs



1401
With arms
19 lbs



1411
Without arms
18 lbs



1404
With arms
22 lbs

Urban – Dolly

DESCRIPTION	MODEL	PRICE
Standard	1499	367
Midsize 22"	1499M	526

Dimensions (inches)

	Standard		Midsize
height	36.5	height	36.5
width	21.0	width	23.0
depth	31.0	depth	42.0



1499
Standard
18 lbs



Pricing March 1, 2020
Discount 57.7% from List prices

spec™

SIN 711-11

10 DAY QUICKSHIP PROGRAM MANHATTAN



MODEL	BASES		TOP SPECIFICATIONS	OPTIONS	MOBILITY	LBS
	Code	Qty.	For Laminate Top PVF	FLIP TOP Add	CASTERS Add	
<i>Round</i>						
36D	MNX	1	824	154	96	55
42D	MNX	1	1109	154	96	69
<i>Square</i>						
36 X 36SQ	MNX	1	842	154	96	55
<i>Rectangle</i>						
24 X 48RE	MNT, MNC	2	815	310	96	71
24 X 60RE	MNT, MNC	2	876	310	96	79
30 X 60RE	MNT, MNC	2	927	310	96	90
30 X 72RE	MNT, MNC	2	1161	310	96	100



MNX



MNT



MNC

STANDARD FEATURES

- Select from 15 standard laminates.
- Standard with leveling glides.
- Bases available in Black or Silver only.
- Silver or Black PVC Flat Edge (PVF).
- Standard 29" table height.
- Locking Casters are not self-leveling.
- Base span increases with size of top.
- Quantity limit of 20 tables.

OPTIONS

- 2" grommet and oval grommet.
- Flip top.
- Casters.
- Seam connectors for joining and leveling tops.

HOW TO ORDER

1. Select Model
2. Select Base
3. Select Edge Style
4. Select Options
5. Select Top Finish
6. Select Edge Finish
7. Select Base Finish

Example: 36D - MNX - 2MM -

MODEL BASE EDGE OPTIONS